

Rectangular LED modules 540x270mm & 270x270mm

Product description

- Long life-time
- Built-in, constant current LED module
- Re-workable push-in terminals enabling easy connection
- Compliance and approval: CE, ENEC
- Other CCT and CRI on request



RecLED CRI 80 CJ G4

| Product name | Ordering code | Colour temperature [K] | Current nominal If nom [mA] | Luminous flux ¹ φ [lm] | Useful luminous flux ² [lm] | Voltage ¹ Vf [V] | Power ¹ P [W] | Efficacy ¹ [lm/W] | Current minimum If min ³ [mA] | Current maximum If max [mA] | Energy Efficiency Class |
|---------------------------------------|----------------|------------------------|-----------------------------|-----------------------------------|----------------------------------------|-----------------------------|--------------------------|------------------------------|------------------------------------------|-----------------------------|-------------------------|
| RecLED 270x270mm 1250lm 830 33V CJ G4 | 1010 147 58346 | 3000 | 215 | 1228 | 1259 | 29 | 6.3 | 196 | 60 | 1200 | B |
| RecLED 540x270mm 2500lm 830 33V CJ G4 | 1010 147 56946 | | 430 | 2455 | 2518 | 29 | 13 | 196 | 120 | 2400 | C |
| RecLED 540x270mm 2500lm 830 66V CJ G4 | 1010 147 57146 | | 215 | 2455 | 2518 | 58 | 13 | 196 | 60 | 1200 | C |
| RecLED 270x270mm 1250lm 840 33V CJ G4 | 1010 147 58446 | 4000 | 215 | 1277 | 1309 | 29 | 6.3 | 204 | 60 | 1200 | B |
| RecLED 540x270mm 2500lm 840 33V CJ G4 | 1010 147 57046 | | 430 | 2554 | 2619 | 29 | 13 | 204 | 120 | 2400 | B |
| RecLED 540x270mm 2500lm 840 66V CJ G4 | 1010 147 57246 | | 215 | 2554 | 2619 | 58 | 13 | 204 | 60 | 1200 | B |

RecLED CRI 80 CN G3

| Product name | Ordering code | Colour temperature [K] | Current nominal If nom [mA] | Luminous flux ¹ φ [lm] | Useful luminous flux ² [lm] | Voltage ¹ Vf [V] | Power ¹ P [W] | Efficacy ¹ [lm/W] | Current minimum If min ³ [mA] | Current maximum If max [mA] | Energy Efficiency Class |
|---------------------------------------|----------------|------------------------|-----------------------------|-----------------------------------|----------------------------------------|-----------------------------|--------------------------|------------------------------|------------------------------------------|-----------------------------|-------------------------|
| RecLED 270x270mm 1250lm 830 33V CN G3 | 1010 147 58146 | 3000 | 225 | 1230 | 1272 | 29 | 6.6 | 187 | 60 | 900 | C |
| RecLED 540x270mm 2500lm 830 33V CN G3 | 1010 147 56546 | | 450 | 2459 | 2545 | 29 | 13 | 187 | 120 | 1800 | C |
| RecLED 540x270mm 2500lm 830 66V CN G3 | 1010 147 56746 | | 225 | 2459 | 2545 | 58 | 13 | 187 | 60 | 900 | C |
| RecLED 270x270mm 1250lm 840 33V CN G3 | 1010 147 58246 | 4000 | 225 | 1297 | 1342 | 29 | 6.6 | 198 | 60 | 900 | B |
| RecLED 540x270mm 2500lm 840 33V CN G3 | 1010 147 56646 | | 450 | 2594 | 2685 | 29 | 13 | 198 | 120 | 1800 | B |
| RecLED 540x270mm 2500lm 840 66V CN G3 | 1010 147 56846 | | 225 | 2594 | 2685 | 58 | 13 | 198 | 60 | 900 | B |

¹At nominal current and T_p

²At nominal current and 25°C

³It is recommended not to operate below minimum current in order to avoid un-even brightness

Tolerance range for optical and electrical ±10%

Temperature & humidity

| Specification item | Unit | Value |
|--------------------------------------------|------|-------------|
| T _p | [°C] | 45 |
| T _p rated | [°C] | 65 |
| T _c | [°C] | 85 |
| Relative humidity (non-condensing) | [%] | 5 ... 85 |
| Storage ambient temperature | [°C] | -25 ... +85 |
| Storage relative humidity (non-condensing) | [%] | 5 ... 85 |

T_p - Temperature related to the performance parameters of the LED modules

T_p rated - Maximum operating temperature to which the rated performance characteristics are declared

T_c - Highest permissible value for safe operation

Technical data

| Specification item | Unit | Value |
|----------------------------------|--------|---------------|
| Classification acc. to IEC 62031 | | built-in |
| Working voltage | [Vdc] | 350 |
| Beam angle | [deg] | 120 |
| Initial color consistency | [SDCM] | 3 |
| Photobiological safety | | RG1 unlimited |

Rectangular LED modules 540x270mm & 270x270mm

Color coordinates

According to CIE 1931

| Specification item | CIE _x | CIE _y |
|--------------------|------------------|------------------|
| 2700K | 0.4578 | 0.4101 |
| 3000K | 0.4338 | 0.4030 |
| 4000K | 0.3818 | 0.3797 |
| 6500K | 0.3123 | 0.3282 |

Certificates & standards

| Specification item | Compliant |
|--------------------|--------------|
| ENEC | Yes |
| CE | Yes |
| RoHS | Yes |
| REACH | Yes |
| IP rating | No IP rating |

Lumen maintenance

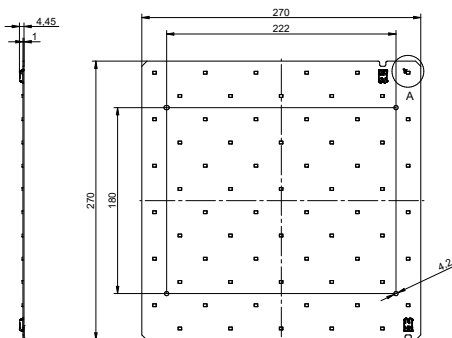
for Cj G4, CN G3

| Forward current | T _p temp. | L70 [h] | | L80 [h] | | L90 [h] | |
|-----------------|----------------------|----------|----------|----------|----------|----------|----------|
| | | B50 | B10 | B50 | B10 | B50 | B10 |
| If nom | 45°C | >102 000 | >102 000 | >102 000 | >102 000 | >102 000 | >102 000 |
| | 55°C | >102 000 | >102 000 | >102 000 | >102 000 | >102 000 | >102 000 |
| | 65°C | >102 000 | >102 000 | >102 000 | >102 000 | 89 000 | 88 000 |
| | 75°C | >102 000 | >102 000 | >102 000 | >102 000 | 75 000 | 74 000 |
| | 85°C | >102 000 | >102 000 | >102 000 | >102 000 | 64 000 | 63 000 |
| If max | 45°C | >102 000 | >102 000 | >102 000 | >102 000 | >102 000 | >102 000 |
| | 55°C | >102 000 | >102 000 | >102 000 | >102 000 | 97000 | 96000 |
| | 65°C | >102 000 | >102 000 | >102 000 | >102 000 | 82 000 | 81 000 |
| | 75°C | >102 000 | >102 000 | >102 000 | >102 000 | 69 000 | 68 000 |
| | 85°C | >102 000 | >102 000 | >102 000 | >102 000 | 59 000 | 58 000 |

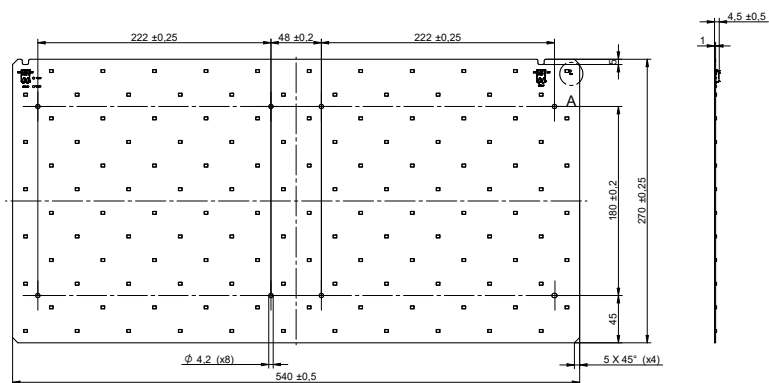
Reported data based on LM80 LED data (17 000h)

Dimensions

RecLED 270x270mm



RecLED 540x270mm



Mounting

LED Modules cannot be exposed to tensile or compressive stresses. For this purpose it is necessary that the modules are assembled to a flat surface by only rounded head screws. Additionally plastic flat washer should be used to ensure creepage distance between screw's head and surface of the pcb. Max. torque for fixing: 0,5Nm.

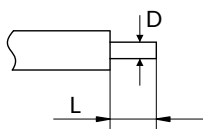
LED modules are sensitive to electrostatic discharge (ESD). Follow safety regulations according to IEC 61340-5-1.

Protection against electric shock must be provided by the luminaire's enclosure.

Rectangular LED modules 540x270mm & 270x270mm

Wiring

Wire cross section and strip length:



| D - wire cross section (solid and flexible wires) | Min | Max |
|------------------------------------------------------|--------------------|---------------------|
| | 0.2mm ² | 0.75mm ² |
| | AWG 24 | AWG 18 |

| L - strip length | Min | Max |
|------------------|-----|-----|
| | 8mm | 9mm |

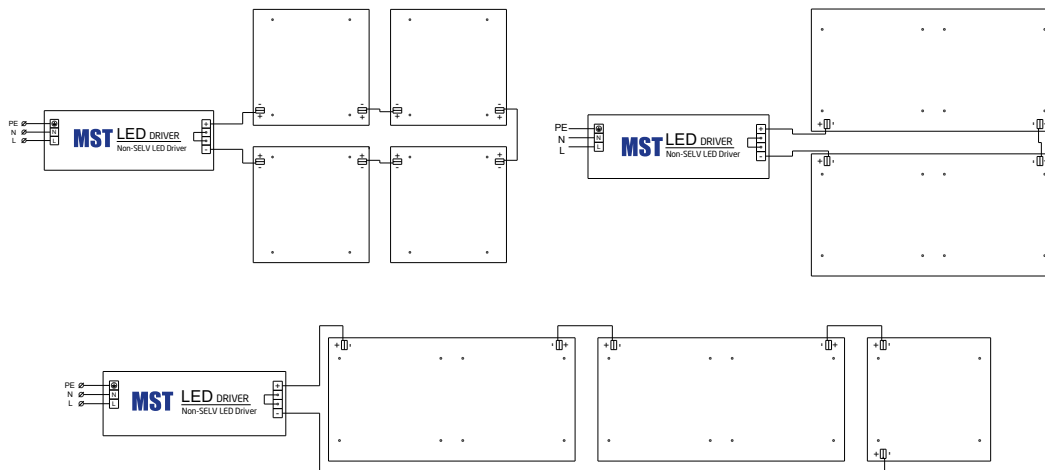
Opening for the release of wires from the top
with release pin Electroterminal art. 881 167 884:



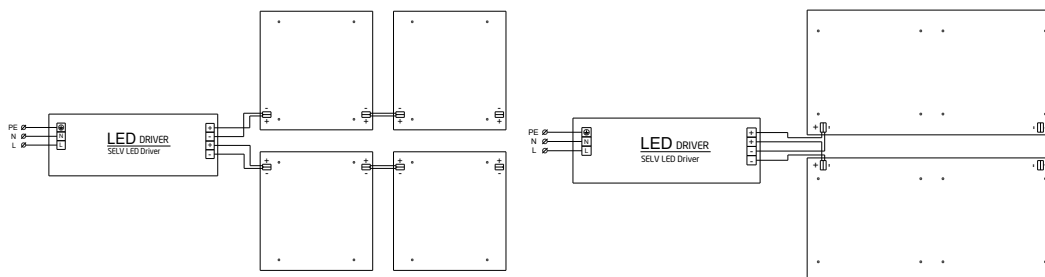
Connections

| Max number of modules | Unit | Series | Parallel |
|------------------------------|-------|--------|----------|
| RecLED 270x270mm ... 33V ... | [pcs] | 8 | 4 |
| RecLED 540x270mm ... 66V ... | [pcs] | 4 | 2 |
| RecLED 540x270mm ... 33V ... | [pcs] | 8 | 2 |

Wiring for series connection system



Wiring for parallel connection system



To prevent irregular luminous intensity in parallel connection use only LED modules from the same V-code group.
V-code (e.g. "A", "B", "AB") is printed on the LED module and box label. Naming is not adequate to efficacy or luminous flux.

Rectangular LED modules 540x270mm & 270x270mm

Energy Label / EPREL database

To obtain Energy Label for this product visit <https://eprel.ec.europa.eu/> and enter model identifier

Model identifier consists of 10 digits XXXX XXX XXX. It is printed directly on the LED module or on product label. This is the number you can see in EPREL database.

Ordering code consist of 12 digits XXXX XXX XXX46. Additional last two digits means packaging of the product.

Ordering codes

| Product name | Ordering code | Pieces per box | Pieces per pallet | Box dimensions [mm] |
|---------------------------------------|----------------|----------------|-------------------|---------------------|
| RecLED 270x270mm 1250lm 830 33V CJ G4 | 1010 147 58346 | 22 | 1232 | 553 x 283 x 58 |
| RecLED 540x270mm 2500lm 830 33V CJ G4 | 1010 147 56946 | 10 | 560 | 553 x 283 x 58 |
| RecLED 540x270mm 2500lm 830 66V CJ G4 | 1010 147 57146 | 10 | 560 | 553 x 283 x 58 |
| RecLED 270x270mm 1250lm 840 33V CJ G4 | 1010 147 58446 | 22 | 1232 | 553 x 283 x 58 |
| RecLED 540x270mm 2500lm 840 33V CJ G4 | 1010 147 57046 | 10 | 560 | 553 x 283 x 58 |
| RecLED 540x270mm 2500lm 840 66V CJ G4 | 1010 147 57246 | 10 | 560 | 553 x 283 x 58 |
| RecLED 270x270mm 1250lm 830 33V CN G3 | 1010 147 58146 | 22 | 1232 | 553 x 283 x 58 |
| RecLED 540x270mm 2500lm 830 33V CN G3 | 1010 147 56546 | 10 | 560 | 553 x 283 x 58 |
| RecLED 540x270mm 2500lm 830 66V CN G3 | 1010 147 56746 | 10 | 560 | 553 x 283 x 58 |
| RecLED 270x270mm 1250lm 840 33V CN G3 | 1010 147 58246 | 22 | 1232 | 553 x 283 x 58 |
| RecLED 540x270mm 2500lm 840 33V CN G3 | 1010 147 56646 | 10 | 560 | 553 x 283 x 58 |
| RecLED 540x270mm 2500lm 840 66V CN G3 | 1010 147 56846 | 10 | 560 | 553 x 283 x 58 |