

Linear LED modules 3-Row

A linear solution for premium class indoor lighting. Optimized for LEDi's FLORENCE-3R-IP, FLORENCE2-3R optics.

Product description

- Long life-time
- Built-in, constant current LED module
- Re-workable push-in terminals enabling easy connection
- Compliance and approval: CE, ENEC
- Other CCT and CRI on request



LinLED CRI 80 CG G5

Product name	Ordering code	Colour temperature [K]	Current nominal If nom [mA]	Luminous flux ¹ φ [lm]	Useful luminous flux ² [lm]	Voltage ¹ Vf [V]	Power ¹ P [W]	Efficacy ¹ [lm/W]	Current minimum If min ³ [mA]	Current maximum If max [mA]	Energy Efficiency Class
LinLED 280x55mm 1100lm 830 3x11 33V CG G5	1010 137 01546	3000	190	1081	1109	29	5.6	193	30	900	C
LinLED 280x55mm 1100lm 840 3x11 33V CG G5	1010 137 01646	4000	190	1149	1180	29	5.6	205	30	900	B

LinLED CRI 80 CJ G4

Product name	Ordering code	Colour temperature [K]	Current nominal If nom [mA]	Luminous flux ¹ φ [lm]	Useful luminous flux ² [lm]	Voltage ¹ Vf [V]	Power ¹ P [W]	Efficacy ¹ [lm/W]	Current minimum If min ³ [mA]	Current maximum If max [mA]	Energy Efficiency Class
LinLED 280x55mm 1100lm 830 3x11 33V CJ G4	1010 137 01346	3000	200	1126	1155	30	5.9	190	30	750	C
LinLED 566x55mm 2200lm 830 3x22 66V CJ G4	1010 147 25946		200	2253	2310	60	11.8	190	30	750	C
LinLED 566x55mm 2200lm 830 3x22 33V CJ G4	1010 147 26046		400	2253	2310	30	11.8	190	60	1500	C
LinLED 280x55mm 1100lm 840 3x11 33V CJ G4	1010 137 01446	4000	200	1171	1201	30	5.9	198	30	750	B
LinLED 566x55mm 2200lm 840 3x22 66V CJ G4	1010 137 91846		200	2343	2402	60	11.8	198	30	750	B
LinLED 566x55mm 2200lm 840 3x22 33V CJ G4	1010 147 13746		400	2343	2402	30	11.8	198	60	1500	B

¹At nominal current and T_p

²At nominal current and 25°C

³It is recommended not to operate below minimum current in order to avoid un-even brightness

Tolerance range for optical and electrical ±10%

Temperature & humidity

Specification item	Unit	Value
T _p	[°C]	45
T _{p rated}	[°C]	65
T _c	[°C]	85
Relative humidity (non-condensing)	[%]	5 ... 85
Storage ambient temperature	[°C]	-25 ... +85
Storage relative humidity (non-condensing)	[%]	5 ... 85

T_p - Temperature related to the performance parameters of the LED modules

T_{p rated} - Maximum operating temperature to which the rated performance characteristics are declared

T_c - Highest permissible value for safe operation

Linear LED modules 3-Row

Technical data

Specification item	Unit	Value
Classification acc. to IEC 62031		built-in
Working voltage	[Vdc]	350
Beam angle	[deg]	120
Initial color coordinates		Acc. to CIE 1931
Photobiological safety		RG1 unlimited

Color coordinates

According to CIE 1931

Specification item	CIE _x	CIE _y
2700K	0.4578	0.4101
3000K	0.4338	0.4030
4000K	0.3818	0.3797
6500K	0.3123	0.3282

Certificates & standards

Specification item	Compliant
ENEC	Yes
CE	Yes
RoHS	Yes
REACH	Yes
IP rating	No IP rating

Lumen maintenance

for CJ G4, CG G5

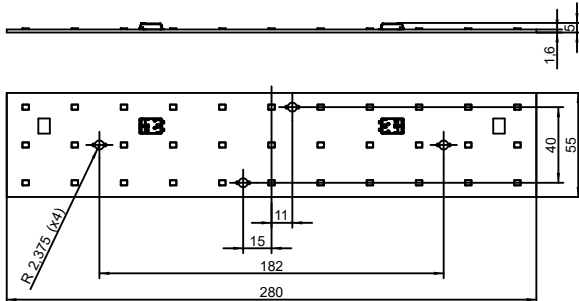
Forward current	T _p temp.	L70 [h]		L80 [h]		L90 [h]	
		B50	B10	B50	B10	B50	B10
If nom	45°C	>102 000	>102 000	>102 000	>102 000	>102 000	>102 000
	55°C	>102 000	>102 000	>102 000	>102 000	>102 000	>102 000
	65°C	>102 000	>102 000	>102 000	>102 000	87 000	86 000
	75°C	>102 000	>102 000	>102 000	>102 000	74 000	73 000
	85°C	>102 000	>102 000	>102 000	>102 000	63 000	62 000
If max	45°C	>102 000	>102 000	>102 000	>102 000	>102 000	>102 000
	55°C	>102 000	>102 000	>102 000	>102 000	93000	92000
	65°C	>102 000	>102 000	>102 000	>102 000	79 000	78 000
	75°C	>102 000	>102 000	>102 000	>102 000	67 000	66 000
	85°C	>102 000	>102 000	>102 000	>102 000	57 000	56 000

Reported data based on LM80 LED data (17 000h)

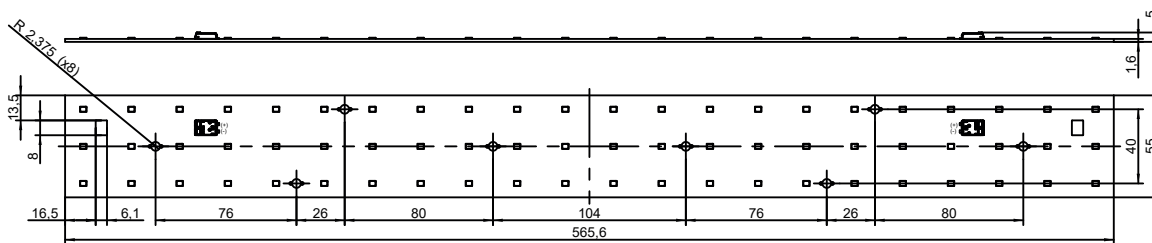
Linear LED modules 3-Row

Dimensions

280x55mm



566x55mm



Mounting

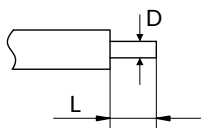
LED Modules cannot be exposed to tensile or compressive stresses. For this purpose it is necessary that the modules are assembled to a flat surface by only rounded head screws. Additionally plastic flat washer should be used to ensure creepage distance between screw's head and surface of the pcb. Max. torque for fixing: 0,5Nm.

LED modules are sensitive to electrostatic discharge (ESD). Follow safety regulations according to IEC 61340-5-1.

Protection against electric shock must be provided by the luminaire's enclosure.

Wiring

Wire cross section and strip length:



D - wire cross section (solid and flexible wires)	Min	Max
	0.2mm ²	0.75mm ²
	AWG 24	AWG 18

L - strip length	Min	Max
	8mm	9mm

Opening for the release of wires from the top with release pin Electroterminal art. 881 167 884:

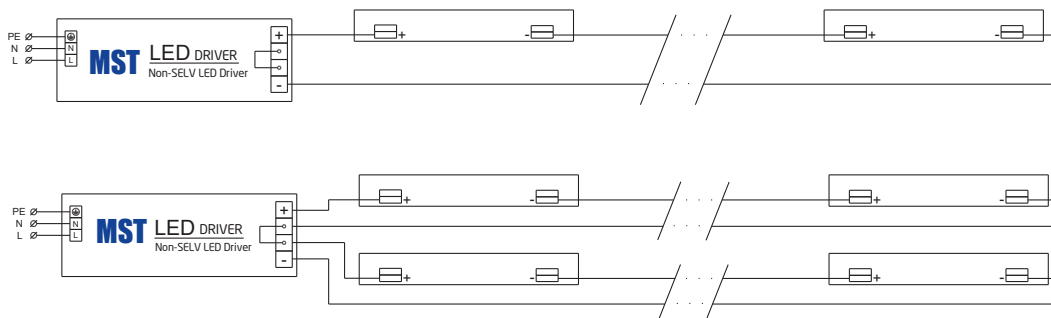


Linear LED modules 3-Row

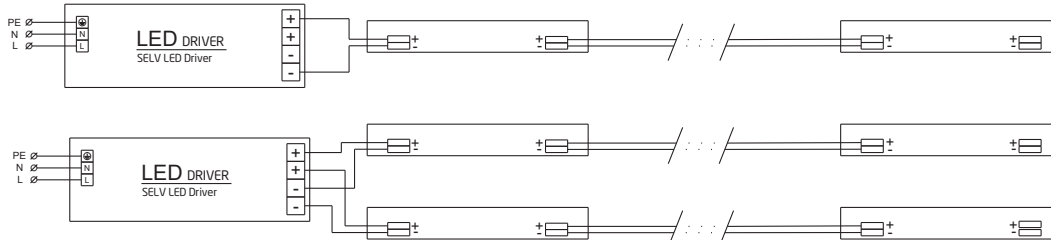
Connections

Max number of modules	Unit	Series	Parallel
LinLED 280x55mm ... 33V ...	[pcs]	10	6
LinLED 566x55mm ... 66V ...	[pcs]	5	3
LinLED 566x55mm ... 33V ...	[pcs]	5	3

Wiring for series connection system



Wiring for parallel connection system



To prevent irregular luminous intensity in parallel connection use only LED modules from the same V-code group.
V-code (e.g. "A", "B", "AB") is printed on the LED module and box label. Naming is not adequate to efficacy or luminous flux.

Energy Label / EPREL database

To obtain Energy Label for this product visit <https://eprel.ec.europa.eu/> and enter model identifier

Model identifier consists of 10 digits XXXX XXX XXX. It is printed directly on the LED module or on product label. This is the number you can see in EPREL database.

Ordering code consist of 12 digits XXXX XXX XXX46. Additional last two digits means packaging of the product.

Ordering codes

Product name	Ordering code	Pieces per box	Pieces per pallet	Box dimensions [mm]
LinLED 280x55mm 1100lm 830 3x11 33V CG G5	1010 137 01546	60	7200	300 x 266 x 83
LinLED 280x55mm 1100lm 840 3x11 33V CG G5	1010 137 01646	60	7200	300 x 266 x 83
LinLED 280x55mm 1100lm 830 3x11 33V CJ G4	1010 137 01346	60	7200	300 x 266 x 83
LinLED 566x55mm 2200lm 830 3x22 66V CJ G4	1010 147 25946	60	3600	603 x 266 x 83
LinLED 566x55mm 2200lm 830 3x22 33V CJ G4	1010 147 26046	60	3600	603 x 266 x 83
LinLED 280x55mm 1100lm 840 3x11 33V CJ G4	1010 137 01446	60	7200	300 x 266 x 83
LinLED 566x55mm 2200lm 840 3x22 66V CJ G4	1010 137 91846	60	3600	603 x 266 x 83
LinLED 566x55mm 2200lm 840 3x22 33V CJ G4	1010 147 13746	60	3600	603 x 266 x 83