

Linear LED modules 3-Row

A linear solution for premium class indoor lighting. Optimized for LEDiL's FLORENCE-3R-IP, FLORENCE2-3R optics.

Product description

- Long life-time
- Built-in, constant current LED module
- Re-workable push-in terminals enabling easy connection
- Compliance and approval: CE
- Available CCT from 2700K to 6500K and CRI 70, 80, 90



LinLED CRI 80 LE G5

| Product name | Ordering code | Colour temperature [K] | Current nominal If nom [mA] | Luminous flux ¹ φ [lm] | Useful luminous flux ² [lm] | Voltage ¹ Vf [V] | Power ¹ P [W] | Efficacy ¹ [lm/W] | Current minimum If min ³ [mA] | Current maximum If max [mA] | Energy Efficiency Class |
|---|----------------|------------------------|-----------------------------|-----------------------------------|--|-----------------------------|--------------------------|------------------------------|--|-----------------------------|-------------------------|
| LinLED 280x55mm 1100lm 830 3x11 33V LE G5 | 1010 147 26346 | 3000 | 185 | 1095 | 1124 | 29 | 5.4 | 201 | 30 | 600 | B |
| LinLED 566x55mm 2200lm 830 3x22 66V LE G5 | 1010 147 26446 | | 185 | 2190 | 2247 | 59 | 10.9 | 201 | 30 | 600 | B |
| LinLED 566x55mm 2200lm 830 3x22 33V LE G5 | 1010 147 26546 | | 370 | 2190 | 2247 | 29 | 10.9 | 201 | 60 | 1200 | B |
| LinLED 280x55mm 1100lm 840 3x11 33V LE G5 | 1010 147 26646 | 4000 | 185 | 1156 | 1186 | 29 | 5.4 | 212 | 30 | 600 | B |
| LinLED 566x55mm 2200lm 840 3x22 66V LE G5 | 1010 147 26746 | | 185 | 2312 | 2372 | 59 | 10.9 | 212 | 30 | 600 | B |
| LinLED 566x55mm 2200lm 840 3x22 33V LE G5 | 1010 147 26846 | | 370 | 2312 | 2372 | 29 | 10.9 | 212 | 60 | 1200 | B |

LinLED CRI 80 CJ G4

| Product name | Ordering code | Colour temperature [K] | Current nominal If nom [mA] | Luminous flux ¹ φ [lm] | Useful luminous flux ² [lm] | Voltage ¹ Vf [V] | Power ¹ P [W] | Efficacy ¹ [lm/W] | Current minimum If min ³ [mA] | Current maximum If max [mA] | Energy Efficiency Class |
|---|----------------|------------------------|-----------------------------|-----------------------------------|--|-----------------------------|--------------------------|------------------------------|--|-----------------------------|-------------------------|
| LinLED 280x55mm 1100lm 830 3x11 33V CJ G4 | 1010 137 01346 | 3000 | 200 | 1126 | 1155 | 30 | 5.9 | 190 | 30 | 750 | C |
| LinLED 566x55mm 2200lm 830 3x22 66V CJ G4 | 1010 147 25946 | | 200 | 2253 | 2310 | 60 | 11.8 | 190 | 30 | 750 | C |
| LinLED 566x55mm 2200lm 830 3x22 33V CJ G4 | 1010 147 26046 | | 400 | 2253 | 2310 | 30 | 11.8 | 190 | 60 | 1500 | C |
| LinLED 280x55mm 1100lm 840 3x11 33V CJ G4 | 1010 137 01446 | 4000 | 200 | 1171 | 1201 | 30 | 5.9 | 198 | 30 | 750 | B |
| LinLED 566x55mm 2200lm 840 3x22 66V CJ G4 | 1010 137 91846 | | 200 | 2343 | 2402 | 60 | 11.8 | 198 | 30 | 750 | B |
| LinLED 566x55mm 2200lm 840 3x22 33V CJ G4 | 1010 147 13746 | | 400 | 2343 | 2402 | 30 | 11.8 | 198 | 60 | 1500 | B |

LinLED CRI 90 LE G5

| Product name | Ordering code | Colour temperature [K] | Current nominal If nom [mA] | Luminous flux ¹ φ [lm] | Useful luminous flux ² [lm] | Voltage ¹ Vf [V] | Power ¹ P [W] | Efficacy ¹ [lm/W] | Current minimum If min ³ [mA] | Current maximum If max [mA] | Energy Efficiency Class |
|---|----------------|------------------------|-----------------------------|-----------------------------------|--|-----------------------------|--------------------------|------------------------------|--|-----------------------------|-------------------------|
| LinLED 280x55mm 1100lm 930 3x11 33V LE G5 | 1010 137 99646 | 3000 | 210 | 1100 | 1128 | 30 | 6.2 | 177 | 30 | 600 | C |
| LinLED 566x55mm 2200lm 930 3x22 66V LE G5 | 1010 137 91946 | | 210 | 2200 | 2257 | 59 | 12.4 | 177 | 30 | 600 | C |
| LinLED 566x55mm 2200lm 930 3x22 33V LE G5 | 1010 147 13846 | | 420 | 2200 | 2257 | 30 | 12.4 | 177 | 60 | 1200 | C |
| LinLED 280x55mm 1100lm 940 3x11 33V LE G5 | 1010 137 99746 | 4000 | 210 | 1169 | 1199 | 30 | 6.2 | 188 | 30 | 600 | C |
| LinLED 566x55mm 2200lm 940 3x22 66V LE G5 | 1010 147 26146 | | 210 | 2337 | 2398 | 59 | 12.4 | 188 | 30 | 600 | C |
| LinLED 566x55mm 2200lm 940 3x22 33V LE G5 | 1010 147 26246 | | 420 | 2337 | 2398 | 30 | 12.4 | 188 | 60 | 1200 | C |

¹At nominal current and T_p

²At nominal current and 25°C

³It is recommended not to operate below minimum current in order to avoid un-even brightness

Tolerance range for optical and electrical ±10%

Temperature & humidity

| Specification item | Unit | Value |
|--|------|-------------|
| T _p | [°C] | 45 |
| T _{p rated} | [°C] | 65 |
| T _c | [°C] | 85 |
| Relative humidity (non-condensing) | [%] | 5 ... 85 |
| Storage ambient temperature | [°C] | -25 ... +85 |
| Storage relative humidity (non-condensing) | [%] | 5 ... 85 |

T_p - Temperature related to the performance parameters of the LED modules

T_{p rated} - Maximum operating temperature to which the rated performance characteristics are declared

T_c - Highest permissible value for safe operation

Linear LED modules 3-Row

Technical data

| Specification item | Unit | Value |
|----------------------------------|-------|------------------|
| Classification acc. to IEC 62031 | | built-in |
| Working voltage | [Vdc] | 350 |
| Beam angle | [deg] | 120 |
| Initial color coordinates | | Acc. to CIE 1931 |
| Photobiological safety | | RG1 unlimited |

Color coordinates

According to CIE 1931

| Specification item | CIE _x | CIE _y |
|--------------------|------------------|------------------|
| 3000K | 0.4338 | 0.4030 |
| 4000K | 0.3818 | 0.3797 |

Certificates & standards

| Specification item | Compliant |
|--------------------|--------------|
| ENEC | Pending |
| CE | Yes |
| RoHS | Yes |
| REACH | Yes |
| IP rating | No IP rating |

Lumen maintenance

for LE G5

| Forward current | Tp temp. | L70 [h] | | L80 [h] | | L90 [h] | |
|-----------------|----------|----------|----------|----------|----------|----------|----------|
| | | B50 | B10 | B50 | B10 | B50 | B10 |
| If nom | 45°C | >100 000 | >100 000 | >100 000 | >100 000 | >100 000 | >100 000 |
| | 55°C | >100 000 | >100 000 | >100 000 | >100 000 | >100 000 | >100 000 |
| | 65°C | >100 000 | >100 000 | >100 000 | >100 000 | >100 000 | >100 000 |
| | 75°C | >100 000 | >100 000 | >100 000 | >100 000 | >100 000 | 98 000 |
| | 85°C | >100 000 | >100 000 | >100 000 | >100 000 | 81 000 | 73 000 |
| If max | 45°C | >100 000 | >100 000 | 92 000 | 87 000 | 45 000 | 42 000 |
| | 55°C | >100 000 | >100 000 | 92 000 | 87 000 | 45 000 | 42 000 |
| | 65°C | >100 000 | >100 000 | 92 000 | 87 000 | 45 000 | 42 000 |
| | 75°C | >100 000 | >100 000 | 92 000 | 87 000 | 45 000 | 42 000 |
| | 85°C | >100 000 | >100 000 | 92 000 | 87 000 | 45 000 | 42 000 |

Calculated data based on LM80 LED data (1.2 000h)

for CJ G4

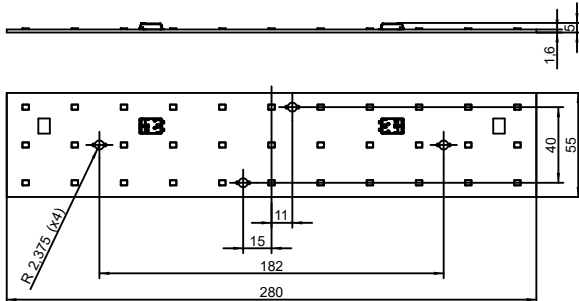
| Forward current | Tp temp. | L70 [h] | | L80 [h] | | L90 [h] | |
|-----------------|----------|----------|----------|----------|----------|----------|----------|
| | | B50 | B10 | B50 | B10 | B50 | B10 |
| If nom | 45°C | >102 000 | >102 000 | >102 000 | >102 000 | >102 000 | >102 000 |
| | 55°C | >102 000 | >102 000 | >102 000 | >102 000 | >102 000 | >102 000 |
| | 65°C | >102 000 | >102 000 | >102 000 | >102 000 | 87 000 | 86 000 |
| | 75°C | >102 000 | >102 000 | >102 000 | >102 000 | 74 000 | 73 000 |
| | 85°C | >102 000 | >102 000 | >102 000 | >102 000 | 63 000 | 62 000 |
| If max | 45°C | >102 000 | >102 000 | >102 000 | >102 000 | >102 000 | >102 000 |
| | 55°C | >102 000 | >102 000 | >102 000 | >102 000 | 93 000 | 92 000 |
| | 65°C | >102 000 | >102 000 | >102 000 | >102 000 | 79 000 | 78 000 |
| | 75°C | >102 000 | >102 000 | >102 000 | >102 000 | 67 000 | 66 000 |
| | 85°C | >102 000 | >102 000 | >102 000 | >102 000 | 57 000 | 56 000 |

Reported data based on LM80 LED data (1.7 000h)

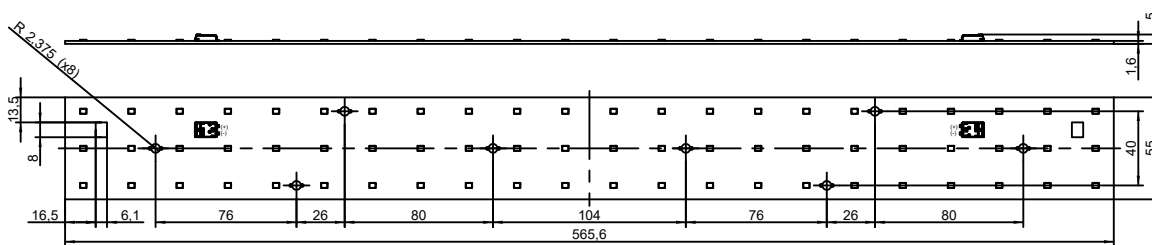
Linear LED modules 3-Row

Dimensions

280x55mm



566x55mm



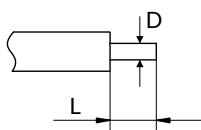
Mounting

LED Modules cannot be exposed to tensile or compressive stresses. For this purpose it is necessary that the modules are assembled to a flat surface by only rounded head screws. Additionally plastic flat washer should be used to ensure creepage distance between screw's head and surface of the pcb. Max. torque for fixing: 0,5Nm.

LED modules are sensitive to electrostatic discharge (ESD). Follow safety regulations according to IEC 61340-5-1.

Wiring

Wire cross section and strip length:



| D - wire cross section (solid and flexible wires) | Min | Max |
|--|--------------------|---------------------|
| | 0.2mm ² | 0.75mm ² |
| | AWG 24 | AWG 18 |

| L - strip length | Min | Max |
|------------------|-----|-----|
| | 8mm | 9mm |

Opening for the release of wires from the top with release pin Electroterminal art. 881 167 884:

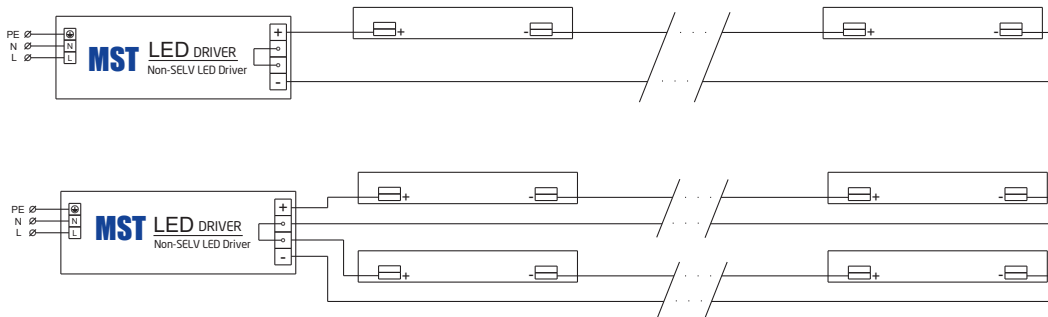


Linear LED modules 3-Row

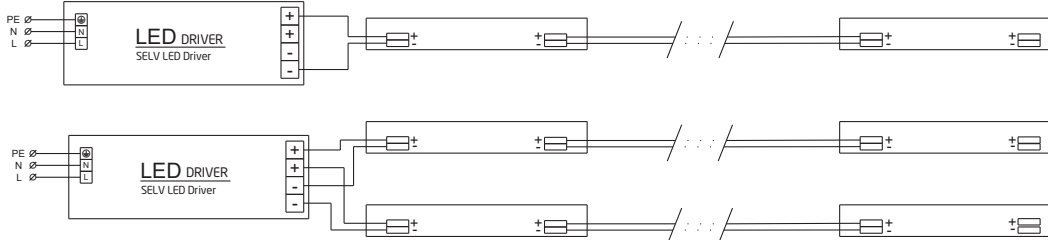
Connections

| Max number of modules | Unit | Series | Parallel |
|-----------------------------|-------|--------|----------|
| LinLED 280x55mm ... 33V ... | [pcs] | 10 | 6 |
| LinLED 566x55mm ... 66V ... | [pcs] | 5 | 3 |
| LinLED 566x55mm ... 33V ... | [pcs] | 5 | 3 |

Wiring for series connection system



Wiring for parallel connection system



To prevent irregular luminous intensity in parallel connection use only LED modules from the same V-code group.
V-code (e.g. "A", "B", "AB") is printed on the LED module and box label. Naming is not adequate to efficacy or luminous flux.

Energy Label / EPREL database

To obtain Energy Label for this product visit <https://eprel.ec.europa.eu/> and enter model identifier

Model identifier consists of 10 digits XXXX XXX XXX. It is printed directly on the LED module or on product label. This is the number you can see in EPREL database.

Ordering code consist of 12 digits XXXX XXX XXX46. Additional last two digits means packaging of the product.

Linear LED modules 3-Row

Ordering codes

| Product name | Ordering code | Pieces per box | Pieces per pallet | Box dimensions [mm] |
|---|----------------|----------------|-------------------|---------------------|
| LinLED 280x55mm 1100lm 830 3x11 33V LE G5 | 1010 147 26346 | 60 | 7200 | 300 x 266 x 83 |
| LinLED 566x55mm 2200lm 830 3x22 66V LE G5 | 1010 147 26446 | 60 | 3600 | 603 x 266 x 83 |
| LinLED 566x55mm 2200lm 830 3x22 33V LE G5 | 1010 147 26546 | 60 | 3600 | 603 x 266 x 83 |
| LinLED 280x55mm 1100lm 840 3x11 33V LE G5 | 1010 147 26646 | 60 | 7200 | 300 x 266 x 83 |
| LinLED 566x55mm 2200lm 840 3x22 66V LE G5 | 1010 147 26746 | 60 | 3600 | 603 x 266 x 83 |
| LinLED 566x55mm 2200lm 840 3x22 33V LE G5 | 1010 147 26846 | 60 | 3600 | 603 x 266 x 83 |
| LinLED 280x55mm 1100lm 830 3x11 33V CJ G4 | 1010 137 01346 | 60 | 7200 | 300 x 266 x 83 |
| LinLED 566x55mm 2200lm 830 3x22 66V CJ G4 | 1010 147 25946 | 60 | 3600 | 603 x 266 x 83 |
| LinLED 566x55mm 2200lm 830 3x22 33V CJ G4 | 1010 147 26046 | 60 | 3600 | 603 x 266 x 83 |
| LinLED 280x55mm 1100lm 840 3x11 33V CJ G4 | 1010 137 01446 | 60 | 7200 | 300 x 266 x 83 |
| LinLED 566x55mm 2200lm 840 3x22 66V CJ G4 | 1010 137 91846 | 60 | 3600 | 603 x 266 x 83 |
| LinLED 566x55mm 2200lm 840 3x22 33V CJ G4 | 1010 147 13746 | 60 | 3600 | 603 x 266 x 83 |
| LinLED 280x55mm 1100lm 930 3x11 33V LE G5 | 1010 137 99646 | 60 | 7200 | 300 x 266 x 83 |
| LinLED 566x55mm 2200lm 930 3x22 66V LE G5 | 1010 137 91946 | 60 | 3600 | 603 x 266 x 83 |
| LinLED 566x55mm 2200lm 930 3x22 33V LE G5 | 1010 147 13846 | 60 | 3600 | 603 x 266 x 83 |
| LinLED 280x55mm 1100lm 940 3x11 33V LE G5 | 1010 137 99746 | 60 | 7200 | 300 x 266 x 83 |
| LinLED 566x55mm 2200lm 940 3x22 66V LE G5 | 1010 147 26146 | 60 | 3600 | 603 x 266 x 83 |
| LinLED 566x55mm 2200lm 940 3x22 33V LE G5 | 1010 147 26246 | 60 | 3600 | 603 x 266 x 83 |