

Linear LED modules 3-Row

A linear solution for premium class office lighting. Optimized for LEDiL FLORENCE 3R (IP) optics.

Product description

- Long life-time
- Built-in, constant current LED module
- Re-workable push-in terminals enabling easy connection
- Compliance and approval: CE
- Available CCT from 2700K to 6500K and CRI 80, 90 and 95



LinLED 280x55mm

Product name	Ordering code	Colour temperature [K]	Current nominal If nom [mA]	Luminous flux @ If nom & Tp Φ [lm]	Voltage @ If nom & Tp Vf [V]	Power @ If nom & Tp P [W]	Efficacy @ If nom & Tp [lm/W]	Current maximum If max [mA]
LinLED 280x55mm 1100lm 830 3x11 33V Opt G2	1010 117 82246	3000	195	1090	30	6	184	450
LinLED 280x55mm 1100lm 840 3x11 33V Opt G2	1010 117 82346	4000	195	1137	30	6	192	450
LinLED 280x55mm 2000lm 830 3x11 33V Opt G1	1010 117 54846	3000	350	1890	31	11	172	1050
LinLED 280x55mm 2000lm 840 3x11 33V Opt G1	1010 117 54946	4000	350	2001	31	11	181	1050

LinLED 560x55mm

Product name	Ordering code	Colour temperature [K]	Current nominal If nom [mA]	Luminous flux @ If nom & Tp Φ [lm]	Voltage @ If nom & Tp Vf [V]	Power @ If nom & Tp P [W]	Efficacy @ If nom & Tp [lm/W]	Current maximum If max [mA]
LinLED 560x55mm 4000lm 830 3x22 33V Opt G1	1010 117 73346	3000	700	3779	31	22	172	2100
LinLED 560x55mm 4000lm 840 3x22 33V Opt G1	1010 117 73446	4000	700	4002	31	22	182	2100
LinLED 560x55mm 4000lm 830 3x22 66V Opt G1	1010 117 73546	3000	350	3779	63	22	172	1050
LinLED 560x55mm 4000lm 840 3x22 66V Opt G1	1010 117 73646	4000	350	4002	63	22	182	1050

Tolerance range for optical and electrical ±10%

Temperature & humidity

Specification item	Unit	Value
Tp	[°C]	45
Tp rated	[°C]	65
Tc	[°C]	85
Relative humidity (non-condensing)	[%]	5 ... 85
Storage ambient temperature	[°C]	-25 ... +85
Storage relative humidity (non-condensing)	[%]	5 ... 85

Tp - Temperature related to the performance parameters of the LED modules

Tp rated - Maximum operating temperature to which the rated performance characteristics are declared

Tc - Highest permissible value for safe operation

Linear LED modules 3-Row

Technical data

Specification item	Unit	Value
Classification acc. to IEC 62031	[V]	built-in
Energy Efficiency Class		A++
Working voltage	[Vdc]	350
Beam angle	[deg]	120
Initial color consistency	[SDCM]	3
Initial color coordinates		Acc. to CIE 1931
Photobiological safety		RG1 unlimited

Certificates & standards

Specification item	Compliant
ENEC	No
CE	Yes
RoHS	Yes
REACH	Yes
Zhaga	Comply with Book 7
IP rating	No IP rating

Lumen maintenance

LinLED CRI 80

only for LinLED 280x55mm 1100lm...

Forward current	Tp temperature	L70 [h]		L80 [h]		L90 [h]	
		B50	B10	B50	B10	B50	B10
If nom	45°C	>60 000	>60 000	>60 000	>60 000	>60 000	>60 000
	55°C	>60 000	>60 000	>60 000	>60 000	>60 000	59 000
	65°C	>60 000	>60 000	>60 000	>60 000	>60 000	53 000
If max	45°C	>60 000	>60 000	>60 000	>60 000	>60 000	57 000
	55°C	>60 000	>60 000	>60 000	>60 000	>60 000	54 000
	65°C	>60 000	>60 000	>60 000	>60 000	57 000	48 000

simulation based on LM80 LED data (10 000h)

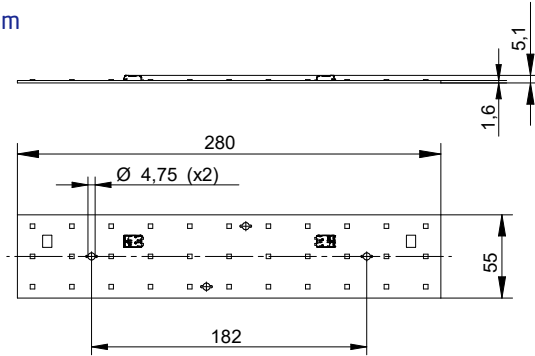
Forward current	Tp temperature	L70 [h]		L80 [h]		L90 [h]	
		B50	B10	B50	B10	B50	B10
If nom	45°C	>54 000	>54 000	>54 000	>54 000	>54 000	>54 000
	55°C	>54 000	>54 000	>54 000	>54 000	>54 000	>54 000
	65°C	>54 000	>54 000	>54 000	>54 000	>54 000	52 000
If max	45°C	>54 000	>54 000	>54 000	>54 000	>54 000	50 000
	55°C	>54 000	>54 000	>54 000	>54 000	>54 000	45 000
	65°C	>54 000	>54 000	>54 000	>54 000	52 000	42 000

simulation based on LM80 LED data (9 000h)

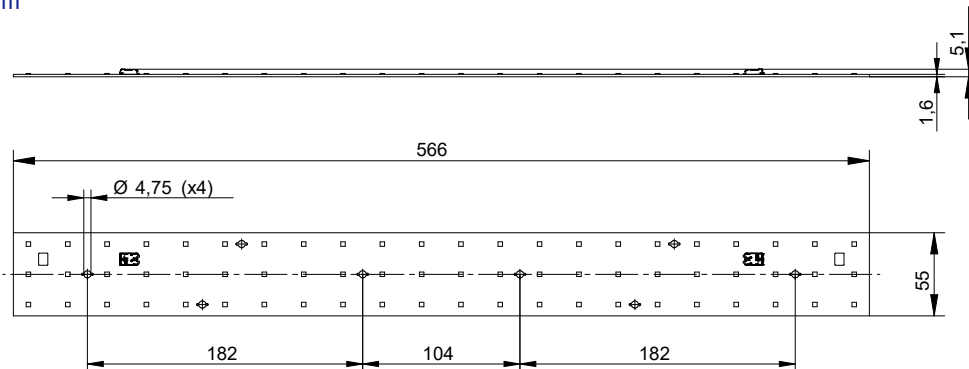
Linear LED modules 3-Row

Dimensions

LinLED 280x55mm



LinLED 566x55mm



Mounting

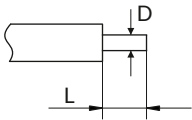
LED Modules cannot be exposed to tensile or compressive stresses. For this purpose it is necessary that the modules are assembled to a flat surface by only rounded head screws. Additionally plastic flat washer should be used to ensure creepage distance between screw's head and surface of the pcb. Max. torque for fixing: 0,5Nm.

LED modules are sensitive to electrostatic discharge (ESD). Follow safety regulations according to IEC 61340-5-1.

Linear LED modules 3-Row

Wiring

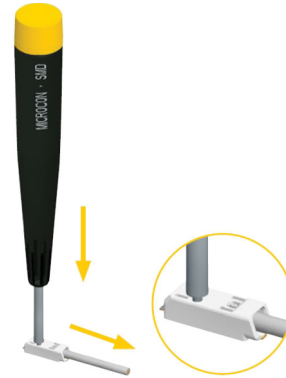
Wire cross section and strip length:



D - wire cross section <i>solid and flexible wires</i>	Min	Max
	0.2mm ²	0.75mm ²
	AWG 18	AWG 24

L - strip length	Min	Max
	8mm	9mm

Opening for the release of wires from the top with release pin Electroterminal art. 881 167 884:



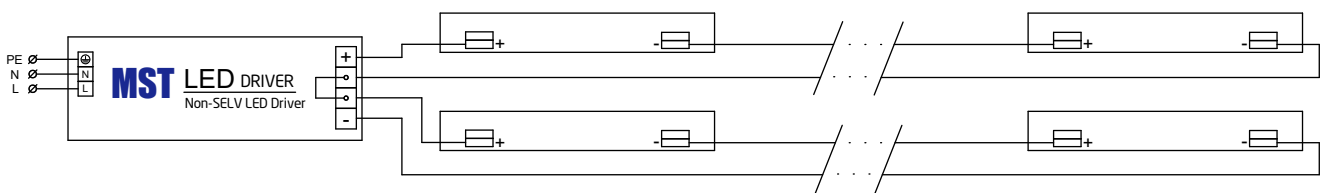
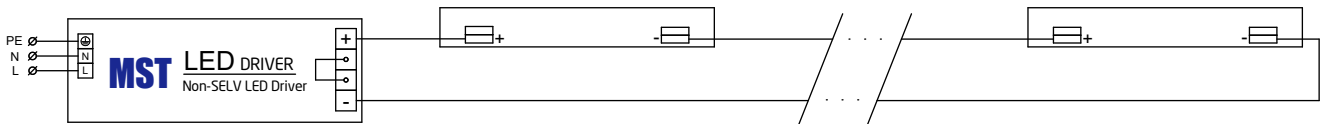
Connections

Max number of modules	Unit	Series	Parallel
LinLED 280x55mm 1100lm 830 3x11 33V Opt G2	[pcs]	10	6
LinLED 280x55mm 1100lm 840 3x11 33V Opt G2	[pcs]	10	6
LinLED 280x55mm 2000lm 830 3x11 33V Opt G1	[pcs]	10	6
LinLED 280x55mm 2000lm 840 3x11 33V Opt G1	[pcs]	10	6
LinLED 560x55mm 4000lm 830 3x22 33V Opt G1	[pcs]	10	3
LinLED 560x55mm 4000lm 840 3x22 33V Opt G1	[pcs]	10	3
LinLED 560x55mm 4000lm 830 3x22 66V Opt G1	[pcs]	5	3
LinLED 560x55mm 4000lm 840 3x22 66V Opt G1	[pcs]	5	3

Wiring for serial connection system

$$I_{\text{driver}} = I_{\text{LEDmodule}}$$

$$U_{\text{driver}} = U_{\text{LED module}} * n \quad n - \text{number of modules}$$

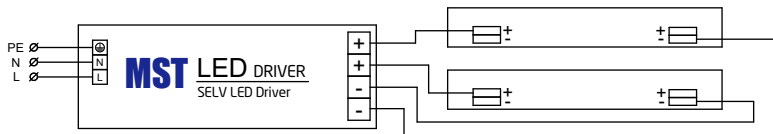
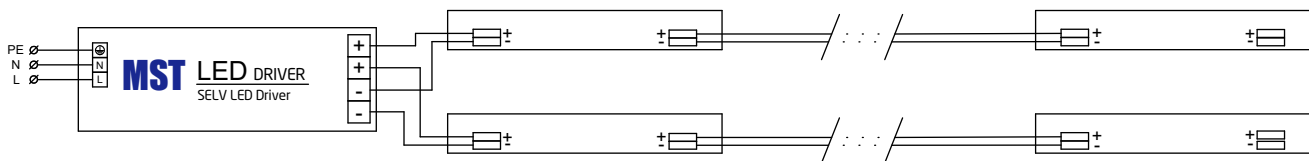
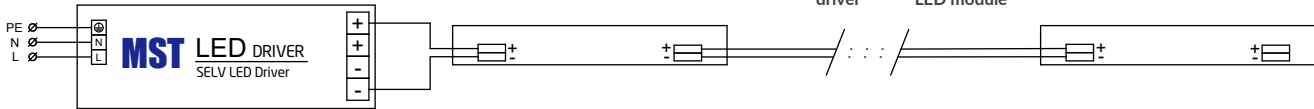


Linear LED modules 3-Row

Wiring for parallel connection system

$$I_{\text{driver}} = I_{\text{LEDmodule}} * n \quad n - \text{number of modules}$$

$$U_{\text{driver}} = U_{\text{LED module}}$$



Ordering codes

Specification item	Ordering code	Pieces per box	Pieces per pallet
LinLED 280x55mm 1100lm 830 3x11 33V Opt G2	1010 117 82246	60	6480
LinLED 280x55mm 1100lm 840 3x11 33V Opt G2	1010 117 82346	60	6480
LinLED 280x55mm 2000lm 830 3x11 33V Opt G1	1010 117 54846	60	6480
LinLED 280x55mm 2000lm 840 3x11 33V Opt G1	1010 117 54946	60	6480
LinLED 560x55mm 4000lm 830 3x22 33V Opt G1	1010 117 73346	50	2000
LinLED 560x55mm 4000lm 840 3x22 33V Opt G1	1010 117 73446	50	2000
LinLED 560x55mm 4000lm 830 3x22 66V Opt G1	1010 117 73546	50	2000
LinLED 560x55mm 4000lm 840 3x22 66V Opt G1	1010 117 73646	50	2000