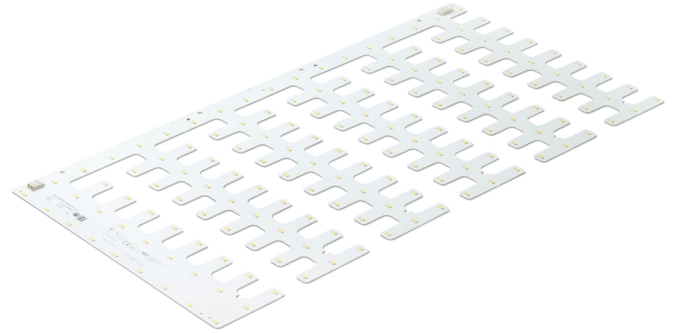


Rectangular LED modules 519x261mm

Product description

- Long life-time
- Built-in, constant current LED module
- Re-workable push-in terminals enabling easy connection
- Compliance and approval: CE, ENEC
- Available CCT from 2700K to 6500K and CRI 80, 90



RecLED CRI 80 Optimum G2

Product name	Ordering code	Colour temperature [K]	Current nominal If nom [mA]	Luminous flux* ϕ [lm]	Voltage* Vf [V]	Power* P [W]	Efficacy* [lm/W]	Current maximum If max [mA]
RecLED 519x261mm 2500lm 830 81V Opt G2	1010 117 88846	3000	180	2371	71	13	186	900
RecLED 519x261mm 2500lm 840 81V Opt G2	1010 117 88946	4000	180	2568	71	13	201	900

RecLED CRI 80 Optimum G1

Product name	Ordering code	Colour temperature [K]	Current nominal If nom [mA]	Luminous flux* ϕ [lm]	Voltage* Vf [V]	Power* P [W]	Efficacy* [lm/W]	Current maximum If max [mA]
RecLED 519x261mm 2500lm 830 81V Opt G1	1010 117 47046	3000	185	2473	73	14	184	900
RecLED 519x261mm 2500lm 840 81V Opt G1	1010 117 47146	4000	185	2597	73	14	193	900

RecLED CRI 90 Optimum G1

Product name	Ordering code	Colour temperature [K]	Current nominal If nom [mA]	Luminous flux* ϕ [lm]	Voltage* Vf [V]	Power* P [W]	Efficacy* [lm/W]	Current maximum If max [mA]
RecLED 519x261mm 2500lm 927 81V Opt G1	1010 117 73246	2700	210	2289	74	16	148	900
RecLED 519x261mm 2500lm 930 81V Opt G1	1010 117 67546	3000	210	2458	74	16	159	900
RecLED 519x261mm 2500lm 940 81V Opt G1	1010 117 52446	4000	210	2628	74	16	170	900

RecLED CRI 80 Basic G1

Product name	Ordering code	Colour temperature [K]	Current nominal If nom [mA]	Luminous flux* ϕ [lm]	Voltage* Vf [V]	Power* P [W]	Efficacy* [lm/W]	Current maximum If max [mA]
RecLED 519x261mm 2500lm 830 81V Bsc G1	1010 117 45846	3000	210	2528	74	16	163	900
RecLED 519x261mm 2500lm 840 81V Bsc G1	1010 117 45946	4000	210	2669	74	16	172	900

*At nominal current and T_p

Tolerance range for optical and electrical $\pm 10\%$

Temperature & humidity

Specification item	Unit	Value
T _p	[°C]	45
T _p rated	[°C]	65
T _c	[°C]	85
Relative humidity (non-condensing)	[%]	5 ... 85
Storage ambient temperature	[°C]	-25 ... +85
Storage relative humidity (non-condensing)	[%]	5 ... 85

T_p - Temperature related to the performance parameters of the LED modules

T_p rated - Maximum operating temperature to which the rated performance characteristics are declared

T_c - Highest permissible value for safe operation

Rectangular LED modules 519x261mm

Technical data

Specification item	Unit	Value
Classification acc. to IEC 62031		built-in
Energy Efficiency Class		A++
Working voltage	[Vdc]	340
Beam angle	[deg]	120
Initial color consistency	[SDCM]	3
Initial color coordinates		Acc. to CIE 1931
Photobiological safety		RG1 unlimited

Certificates & standards

Specification item	Compliant
ENEC	Yes
CE	Yes
RoHS	Yes
REACH	Yes
Zhaga	No
IP rating	No IP rating

Lumen maintenance

RecLED CRI 80

Forward current	Tp temp.	L70 [h]		L80 [h]		L90 [h]	
		B50	B10	B50	B10	B50	B10
If nom	45°C	>72 000	>72 000	>72 000	>72 000	71 000	60 000
	55°C	>72 000	>72 000	>72 000	>72 000	71 000	60 000
	65°C	>72 000	>72 000	>72 000	>72 000	69 000	60 000
	75°C	>72 000	>72 000	>72 000	>72 000	68 000	58 000
	85°C	>72 000	>72 000	>72 000	>72 000	66 000	58 000
If max	45°C	>72 000	>72 000	>72 000	>72 000	51 000	39 000
	55°C	>72 000	>72 000	>72 000	>72 000	51 000	39 000
	65°C	>72 000	>72 000	>72 000	>72 000	48 000	37 000
	75°C	>72 000	>72 000	>72 000	>72 000	45 000	35 000
	85°C	>72 000	>72 000	>72 000	>72 000	69 000	43 000

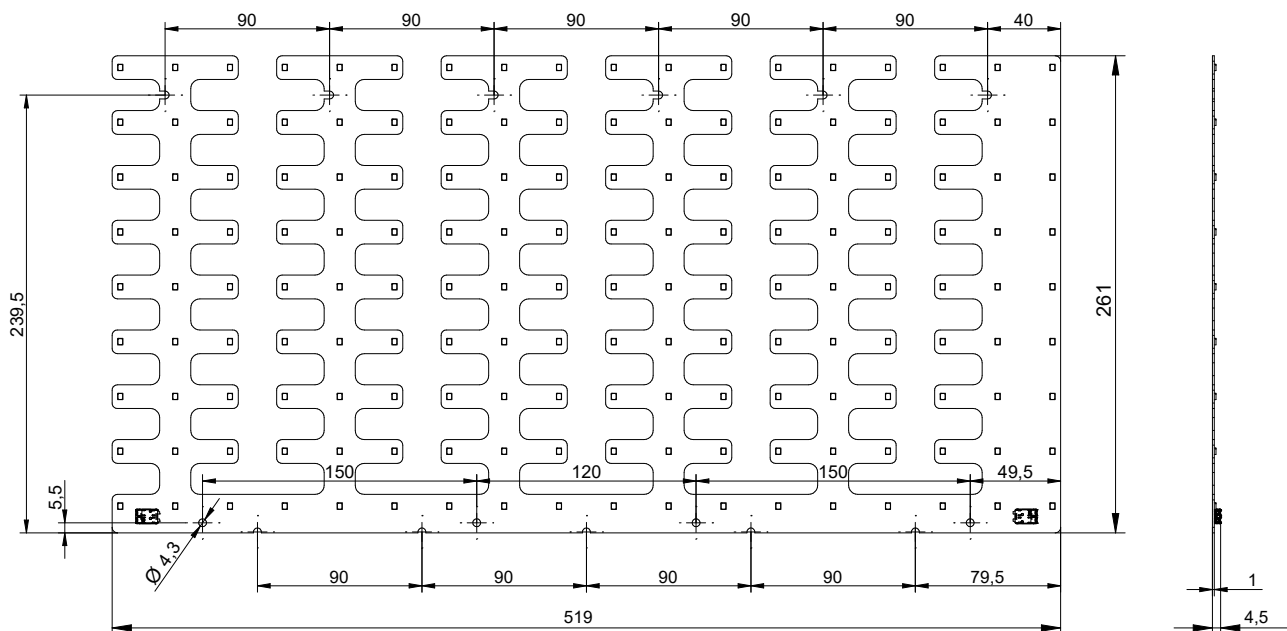
reported data based on LM80 LED data (@65mA 17000h / @160mA & 200mA 12000h)

RecLED CRI 90

Forward current	Tp temp.	L70 [h]		L80 [h]		L90 [h]	
		B50	B10	B50	B10	B50	B10
If nom	45°C	>60 000	>60 000	>60 000	>60 000	>60 000	58 000
	65°C	>60 000	>60 000	>60 000	>60 000	49 000	47 000
	85°C	>60 000	>60 000	>60 000	>60 000	39 000	34 000
If max	45°C	>60 000	>60 000	52 000	49 000	29 000	28 000
	65°C	>60 000	>60 000	47 000	44 000	25 000	24 000
	85°C	>60 000	58 000	41 000	38 000	22 000	19 000

reported data based on LM80 LED data (10 000h)

Dimensions



Rectangular LED modules 519x261mm

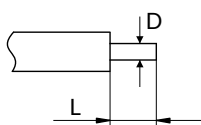
Mounting

LED Modules cannot be exposed to tensile or compressive stresses. For this purpose it is necessary that the modules are assembled to a flat surface by only rounded head screws. Additionally plastic flat washer should be used to ensure creepeage distance between screw's head and surface of the pcb. Max. torque for fixing: 0,5Nm.

LED modules are sensitive to electrostatic discharge (ESD). Follow safety regulations according to IEC 61340-5-1.

Wiring

Wire cross section and strip length:



D - wire cross section (solid and flexible wires)	Min	Max
	0.2mm ²	0.75mm ²
	AWG 24	AWG 18

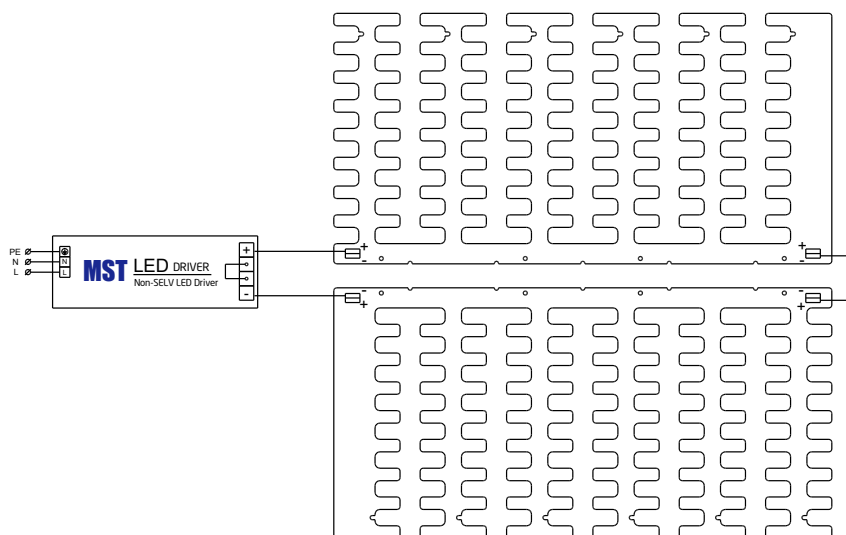
L - strip length	Min	Max
	8mm	9mm

Opening for the release of wires from the top with release pin Electroterminal art. 881 167 884:



Connections

Wiring for series connection system



Ordering codes

Product name	Ordering code	Pieces per box	Pieces per pallet	Box dimensions [mm]
RecLED 519x261mm 2500lm 830 81V Opt G2	1010 117 88846	12	672	548 x 283 x 58
RecLED 519x261mm 2500lm 840 81V Opt G2	1010 117 88946	12	672	548 x 283 x 58
RecLED 519x261mm 2500lm 830 81V Opt G1	1010 117 47046	12	672	548 x 283 x 58
RecLED 519x261mm 2500lm 840 81V Opt G1	1010 117 47146	12	672	548 x 283 x 58
RecLED 519x261mm 2500lm 927 81V Opt G1	1010 117 73246	12	672	548 x 283 x 58
RecLED 519x261mm 2500lm 930 81V Opt G1	1010 117 67546	12	672	548 x 283 x 58
RecLED 519x261mm 2500lm 940 81V Opt G1	1010 117 52446	12	672	548 x 283 x 58
RecLED 519x261mm 2500lm 830 81V Bsc G1	1010 117 45846	12	672	548 x 283 x 58
RecLED 519x261mm 2500lm 840 81V Bsc G1	1010 117 45946	12	672	548 x 283 x 58