

Linear LED modules 280x24mm LINEA GC

A linear solution for premium class office lighting. Optimized for LEDiL's LINNEA-GC optics.

Product description

- Long life-time
- Re-workable push-in terminals enabling easy connection
- Compliance and approval: CE
- Small colour tolerance (MacAdam3)
- Tolerance range for optical and electrical $\pm 10\%$
- 2C - two connectors for series connection system, also recognized as a high voltage system - non-SELV
- Available CCT from 2200K to 6500K and CRI 80, 90 and 95



LinLED 280x24mm

Product name	Ordering code	Colour temp.	If nominal [mA]	Luminous flux @ If nom & Tp Φ [lm]	Voltage @ If nom & Tp Vf [V]	Power @ If nom & Tp P [W]	Efficiency @ If nom & Tp [lm/W]	Max. current If [mA]
LinLED 280x24mm 1100lm 830 2C 30V Opt G1	1010 117 46546	3000	220	1089	28	6	174	450
LinLED 280x24mm 1100lm 840 2C 30V Opt G1	1010 117 46646	4000	220	1137	28	6	182	450

Linear LED modules 280x24mm LINEA GC

Temperatures

Specification item

T _p	45°C	Temperature related to the performance parameters of the LED modules
T _{p rated}	65°C	Maximum operating temperature to which the rated performance characteristics are declared
T _c	85°C	Highest permissible value for safe operation

Electrical & Optical data

Specification item	Unit	Value
Classification acc. to IEC 62031	[V]	built-in
Energy Efficiency Class		A++
Working Voltage	[Vdc]	320
Beam angle	[deg]	120
Initial color consistency	[step]	3
Initial color coordinates		Acc. to CIE 1931
Photobiological safety		RG1 unlimited

Certificates & standards

Specification item	Compliant
ENEC	No
CE	Yes
RoHS	Yes
REACH	Yes
Zhaga	Comply with Book 7
IP rating	No IP rating
Overheating protection	No

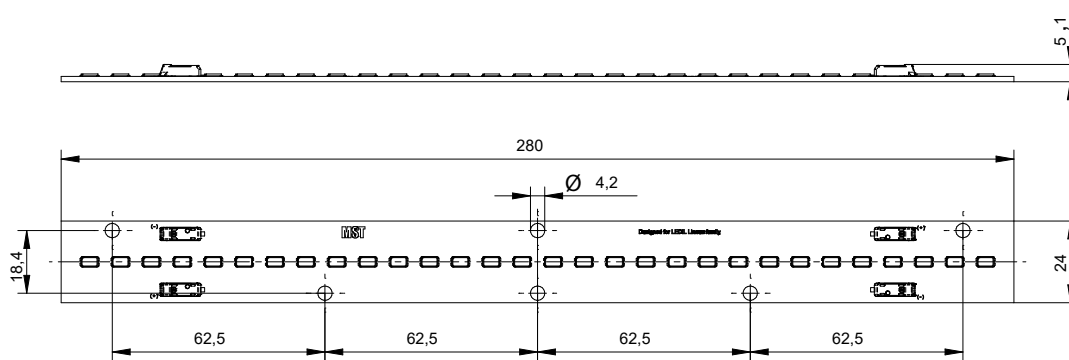
Lumen maintenance

LinLED CRI 80

Forward current	T _p temperature	L70		L80		L90	
		B50	B10	B50	B10	B50	B10
If nom	45°C	>72,000	>72,000	>72,000	>72,000	44,000	37,000
	55°C	>72,000	>72,000	>72,000	>72,000	42,000	35,000
	65°C	>72,000	>72,000	>72,000	60,000	35,000	28,000
If max	45°C	>72,000	>72,000	>72,000	>72,000	42,000	35,000
	55°C	>72,000	>72,000	>72,000	>72,000	40,000	33,000
	65°C	>72,000	>72,000	>72,000	54,000	33,000	26,000

Linear LED modules 280x24mm LINEA GC

Dimensions



Mounting

LED Modules cannot be exposed to tensile or compressive stresses.

For this purpose it is necessary that the modules are assembled to a flat surface by only rounded head screws.

Additionally plastic flat washer should be used to ensure creepage distance between screw's head and surface of the pcb.

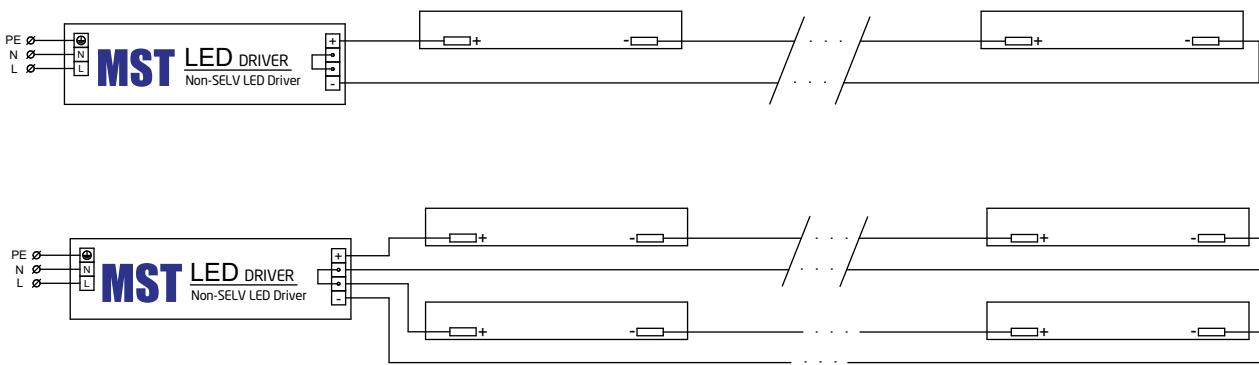
Max. torque for fixing: 0,5Nm

Linear LED modules 280x24mm LINEA GC

Connections

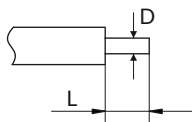
$$I_{LED\ module} = I_{driver}$$

$$U_{driver} = U_{f\ LED\ module} * \text{Number of modules}$$



Wiring

Wire cross section and strip length:



	Min	Max
D - wire cross section <i>solid and flexible wires</i>	0.2mm ²	0.75mm ²
	AWG 18	AWG 24

	Min	Max
L - strip length	8mm	9mm

Opening for the release of wires from the top with release pin Electroterminal art. 881 167 884:

