

Linear LED modules 156x28mm DAISY-4X1

A linear solution for premium class indoor lighting. Optimized for LEDi's DAISY-4X1 optics.

Product description

- Long life-time
- Built-in, constant current LED module
- Re-workable push-in terminals enabling easy connection
- Compliance and approval: CE, ENEC
- 2C - two connectors for series system, also recognized as a high voltage system - non-SELV
- Other CCT and CRI on request



The image shows version 2C. The number and type of connectors may vary depending on the type of module.



LinLED CRI 90 EH1.1 G3

Product name	Ordering code	Colour temperature [K]	Current nominal If nom [mA]	Luminous flux ¹ Φ [lm]	Useful luminous flux ² [lm]	Voltage ¹ Vf [V]	Power ¹ P [W]	Efficacy ¹ [lm/W]	Current minimum If min ³ [mA]	Current maximum If max [mA]	Energy Efficiency Class
LinLED 156x28mm 2x400lm 927-965 2x2C 12V DAISY-4X1 EH1.1 G3	1010 117 65446	2700	260	387	401	12	3.1	124	20	300	E
LinLED 156x28mm 800lm 927 2C 12V DAISY-4X1 EH1.1 G3	1010 127 50746	2700	485	728	754	12	5.8	125	40	600	E
LinLED 156x28mm 800lm 930 2C 12V DAISY-4X1 EH1.1 G3	1010 127 07046	3000	485	780	808	12	5.8	134	40	600	E
LinLED 156x28mm 800lm 940 2C 12V DAISY-4X1 EH1.1 G3	1010 117 75446	4000	485	806	835	12	5.8	139	40	600	E

¹At nominal current and T_p

²At nominal current and 25°C

³It is recommended not to operate below minimum current in order to avoid un-even brightness

Tolerance range for optical and electrical ±10%

Temperature & humidity

Specification item	Unit	Value
T _p	[°C]	45
T _p rated	[°C]	65
T _c	[°C]	85
Relative humidity (non-condensing)	[%]	5 ... 85
Storage ambient temperature	[°C]	-25 ... +85
Storage relative humidity (non-condensing)	[%]	5 ... 85

T_p - Temperature related to the performance parameters of the LED modules

T_p rated - Maximum operating temperature to which the rated performance characteristics are declared

T_c - Highest permissible value for safe operation

Technical data

Specification item	Unit	Value
Classification acc. to IEC 62031		built-in
Working voltage	[Vdc]	120
Beam angle	[deg]	120
Initial color consistency	[SDCM]	3
Photobiological safety		RG1 unlimited

Color coordinates

According to CIE 1931

Specification item	CIE _x	CIE _y
2700K	0.4578	0.4101
3000K	0.4338	0.4030
4000K	0.3818	0.3797
6500K	0.3123	0.3282

Linear LED modules 156x28mm DAISY-4X1

Certificates & standards

Specification item	Compliant
ENEC	Yes
CE	Yes
RoHS	Yes
REACH	Yes
IP rating	No IP rating

Lumen maintenance

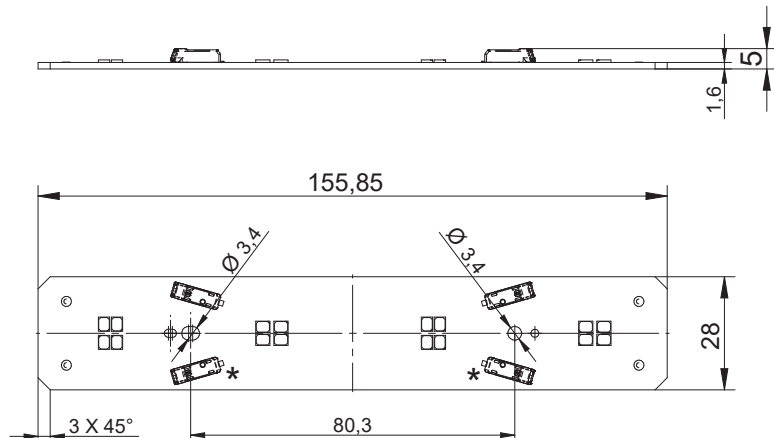
for EH1.1 G3

Forward current	Tp temp.	L70 [h]		L80 [h]		L90 [h]	
		B50	B10	B50	B10	B50	B10
If nom	45°C	>60 000	>60 000	>60 000	>60 000	38 000	37 000
	55°C	>60 000	>60 000	>60 000	58 000	32 000	30 000
	65°C	>60 000	>60 000	52 000	48 000	26 000	24 000
If max	45°C	>60 000	>60 000	52 000	49 000	29 000	28 000
	55°C	>60 000	>60 000	47 000	44 000	25 000	24 000
	65°C	>60 000	58 000	41 000	38 000	22 000	19 000

reported data based on LM80 LED data (10 000h)

Dimensions

Product name	Connectors (*)
LinLED 156x28mm...2x2C ...	Yes
LinLED 156x28mm ... 2C ...	No



Mounting

LED Modules cannot be exposed to tensile or compressive stresses. For this purpose it is necessary that the modules are assembled to a flat surface by only rounded head screws. Additionally plastic flat washer should be used to ensure creepage distance between screw's head and surface of the pcb. Max. torque for fixing: 0,5Nm.

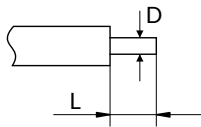
LED modules are sensitive to electrostatic discharge (ESD). Follow safety regulations according to IEC 61340-5-1.

Protection against electric shock must be provided by the luminaire's enclosure.

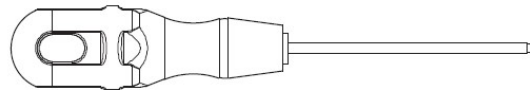
Linear LED modules 156x28mm DAISY-4X1

Wiring

Wire cross section and strip length:



Opening for the release of wires with contact opening tool AVX art. 06-9296-7001-01-000:



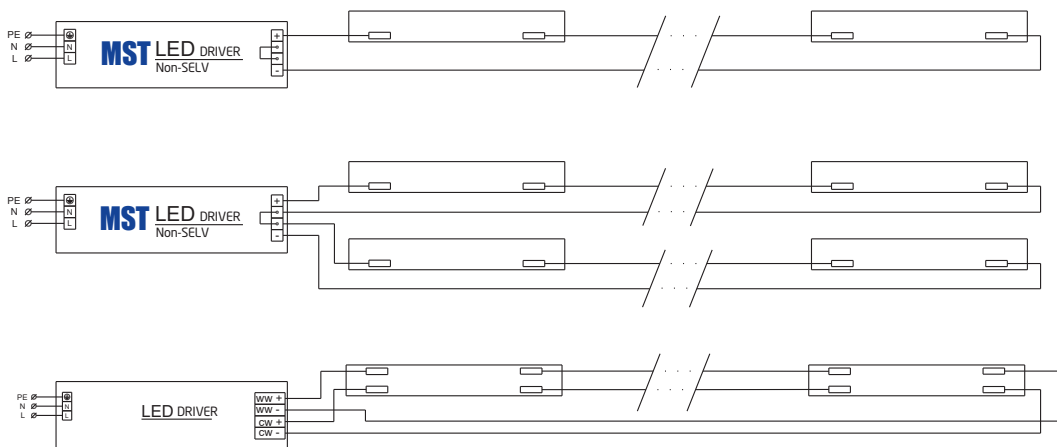
D - wire cross section (solid and flexible wires)	Min	Max
	0.13mm ²	0.8mm ²
	AWG 26	AWG 18

L - strip length	Min	Max
	4mm	5mm

Connections

Max number of modules	Unit	Series	Parallel
LinLED 156x28mm...	[pcs]	10	-

Wiring for series connection system (2C)



Energy Label / EPREL database

To obtain Energy Label for this product visit <https://eprel.ec.europa.eu/> and enter model identifier

Model identifier consists of 10 digits XXXX XXX XXX. It is printed directly on the LED module or on product label. This is the number you can see in EPREL database.

Ordering code consist of 12 digits XXXX XXX XXX46. Additional last two digits means packaging of the product.

Ordering codes

Product name	Ordering code	Pieces per box	Pieces per pallet	Box dimensions [mm]
LinLED 156x28mm 2x400lm 927-965 2x2C 12V DAISY-4X1 EH1.1 G3	1010 117 65446	85	20400	150 x 266 x 83
LinLED 156x28mm 800lm 927 2C 12V DAISY-4X1 EH1.1 G3	1010 127 50746	85	20400	150 x 266 x 83
LinLED 156x28mm 800lm 930 2C 12V DAISY-4X1 EH1.1 G3	1010 127 07046	85	20400	150 x 266 x 83
LinLED 156x28mm 800lm 940 2C 12V DAISY-4X1 EH1.1 G3	1010 117 75446	85	20400	150 x 266 x 83