

Round LED modules 350mm

Product description

- Long life-time
- Built-in, constant current LED module
- Re-workable push-in terminals enabling easy connection
- Compliance and approval: CE, ENEC
- Available CCT from 2700K to 6500K and CRI 80, 90



RdLED CRI 80 CJ G4

Product name	Ordering code	Colour temperature [K]	Current nominal If nom [mA]	Luminous flux ¹ φ [lm]	Useful luminous flux ² [lm]	Voltage ¹ Vf [V]	Power ¹ P [W]	Efficacy ¹ [lm/W]	Current minimum If min ³ [mA]	Current maximum If max [mA]	Energy Efficiency Class
RdLED 350mm 4000lm 827-865 36V CJ G4	1010 147 72946	2700	660	3768	3864	33	22	175	80	2000	C
		6500	660	4157	4262	33	22	193	80	2000	
RdLED 350mm 4000lm 827-865 144V CJ G4	1010 147 73046	2700	165	3768	3864	130	22	175	20	500	C
		6500	165	4157	4262	130	22	193	20	500	
RdLED 350mm 4000lm 830 36V CJ G4	1010 147 72546	3000	660	4023	4125	33	22	187	80	2000	C
RdLED 350mm 4000lm 830 144V CJ G4	1010 147 72746		165	4023	4125	130	22	187	20	500	C
RdLED 350mm 4000lm 840 36V CJ G4	1010 147 72646	4000	660	4184	4290	33	22	194	80	2000	C
RdLED 350mm 4000lm 840 144V CJ G4	1010 147 72846		165	4184	4290	130	22	194	20	500	C

RdLED CRI 80 CN G3

Product name	Ordering code	Colour temperature [K]	Current nominal If nom [mA]	Luminous flux ¹ φ [lm]	Useful luminous flux ² [lm]	Voltage ¹ Vf [V]	Power ¹ P [W]	Efficacy ¹ [lm/W]	Current minimum If min ³ [mA]	Current maximum If max [mA]	Energy Efficiency Class
RdLED 350mm 4000lm 827-865 36V CN G3	1010 137 99546	2700	700	3906	4042	33	23	169	80	1200	C
		6500	700	4238	4386	33	23	184	80	1200	
RdLED 350mm 4000lm 827-865 144V CN G3	1010 137 82246	2700	175	3906	4042	132	23	169	20	300	C
		6500	175	4238	4386	132	23	184	20	300	
RdLED 350mm 4000lm 830 36V CN G3	1010 147 36846	3000	680	3962	4100	33	22	177	80	1600	C
RdLED 350mm 4000lm 830 144V CN G3	1010 147 37046		170	3962	4100	132	22	177	20	400	C
RdLED 350mm 4000lm 840 36V CN G3	1010 147 36946	4000	680	4180	4326	33	22	187	80	1600	C
RdLED 350mm 4000lm 840 144V CN G3	1010 147 37146		170	4180	4326	132	22	187	20	400	C

RdLED CRI 80 LG G2

Product name	Ordering code	Colour temperature [K]	Current nominal If nom [mA]	Luminous flux ¹ φ [lm]	Useful luminous flux ² [lm]	Voltage ¹ Vf [V]	Power ¹ P [W]	Efficacy ¹ [lm/W]	Current minimum If min ³ [mA]	Current maximum If max [mA]	Energy Efficiency Class
RdLED 350mm 4000lm 827-865 36V LG G2	1010 147 72346	2700	700	3845	3967	34	23	164	80	1600	D
		6500	700	4086	4215	34	23	174	80	1600	
RdLED 350mm 4000lm 827-865 144V LG G2	1010 147 72446	2700	175	3845	3967	134	23	164	20	400	D
		6500	175	4086	4215	134	23	174	20	400	
RdLED 350mm 4000lm 830 36V LG G2	1010 147 71946	3000	700	3845	3967	34	23	164	80	1600	D
RdLED 350mm 4000lm 830 144V LG G2	1010 147 72146		175	3845	3967	134	23	164	20	400	D
RdLED 350mm 4000lm 840 36V LG G2	1010 147 72046	4000	700	4086	4215	34	23	174	80	1600	C
RdLED 350mm 4000lm 840 144V LG G2	1010 147 72246		175	4086	4215	134	23	174	20	400	C

Round LED modules 350mm

RdLED CRI 90 EH1.1 G3

Product name	Ordering code	Colour temperature [K]	Current nominal If nom [mA]	Luminous flux ¹ φ [lm]	Useful luminous flux ² [lm]	Voltage ¹ Vf [V]	Power ¹ P [W]	Efficacy ¹ [lm/W]	Current minimum If min ³ [mA]	Current maximum If max [mA]	Energy Efficiency Class
RdLED 350mm 4000lm 927 36V EH1.1 G3	1010 117 68846	2700	750	4006	4126	36	27	150	80	1200	D
RdLED 350mm 4000lm 927 144V EH1.1 G3	1010 117 68546		190	4052	4173	142	27	150	20	300	D
RdLED 350mm 4000lm 930 36V EH1.1 G3	1010 117 68946	3000	750	4006	4126	36	27	150	80	1200	D
RdLED 350mm 4000lm 930 144V EH1.1 G3	1010 117 68646		190	4052	4173	142	27	150	20	300	D
RdLED 350mm 4000lm 940 36V EH1.1 G3	1010 117 69046	4000	750	4256	4383	36	27	160	80	1200	D
RdLED 350mm 4000lm 940 144V EH1.1 G3	1010 117 68746		190	4306	4434	142	27	159	20	300	D

¹At nominal current and T_p

²At nominal current and 25°C

³It is recommended not to operate below minimum current in order to avoid un-even brightness

Tolerance range for optical and electrical ±10%

Temperature & humidity

Specification item	Unit	Value
T _p	[°C]	45
T _p rated	[°C]	65
T _c	[°C]	85
Relative humidity (non-condensing)	[%]	5 ... 85
Storage ambient temperature	[°C]	-25 ... +85
Storage relative humidity (non-condensing)	[%]	5 ... 85

T_p - Temperature related to the performance parameters of the LED modules

T_p rated - Maximum operating temperature to which the rated performance characteristics are declared

T_c - Highest permissible value for safe operation

Technical data

Specification item	Unit	Value
Classification acc. to IEC 62031		built-in
Working voltage	[Vdc]	350
Beam angle	[deg]	120
Initial color consistency	[SDCM]	3
Photobiological safety		RG1 unlimited

Color coordinates

According to CIE 1931

Specification item	CIEx	CIEy
2700K	0.4578	0.4101
3000K	0.4338	0.4030
4000K	0.3818	0.3797
6500K	0.3123	0.3282

Certificates & standards

Specification item	Compliant
ENEC	Yes
CE	Yes
RoHS	Yes
REACH	Yes
IP rating	No IP rating

Round LED modules 350mm

Lumen maintenance

for LE G5, LG G2, LA G3

Forward current	Tp temp.	L70 [h]		L80 [h]		L90 [h]	
		B50	B10	B50	B10	B50	B10
If nom	45°C	>100 000	>100 000	>100 000	>100 000	>100 000	>100 000
	55°C	>100 000	>100 000	>100 000	>100 000	>100 000	>100 000
	65°C	>100 000	>100 000	>100 000	>100 000	>100 000	>100 000
	75°C	>100 000	>100 000	>100 000	>100 000	>100 000	98 000
	85°C	>100 000	>100 000	>100 000	>100 000	81 000	73 000
If max	45°C	>100 000	>100 000	92 000	87 000	45 000	42 000
	55°C	>100 000	>100 000	92 000	87 000	45 000	42 000
	65°C	>100 000	>100 000	92 000	87 000	45 000	42 000
	75°C	>100 000	>100 000	92 000	87 000	45 000	42 000
	85°C	>100 000	>100 000	92 000	87 000	45 000	42 000

Calculated data based on LM80 LED data (12 000h)

for CJ G4, CN G3

Forward current	Tp temp.	L70 [h]		L80 [h]		L90 [h]	
		B50	B10	B50	B10	B50	B10
If nom	45°C	>102 000	>102 000	>102 000	>102 000	>102 000	>102 000
	55°C	>102 000	>102 000	>102 000	>102 000	>102 000	>102 000
	65°C	>102 000	>102 000	>102 000	>102 000	87 000	86 000
	75°C	>102 000	>102 000	>102 000	>102 000	74 000	73 000
	85°C	>102 000	>102 000	>102 000	>102 000	63 000	62 000
If max	45°C	>102 000	>102 000	>102 000	>102 000	>102 000	>102 000
	55°C	>102 000	>102 000	>102 000	>102 000	93000	92000
	65°C	>102 000	>102 000	>102 000	>102 000	79 000	78 000
	75°C	>102 000	>102 000	>102 000	>102 000	67 000	66 000
	85°C	>102 000	>102 000	>102 000	>102 000	57 000	56 000

Reported data based on LM80 LED data (17 000h)

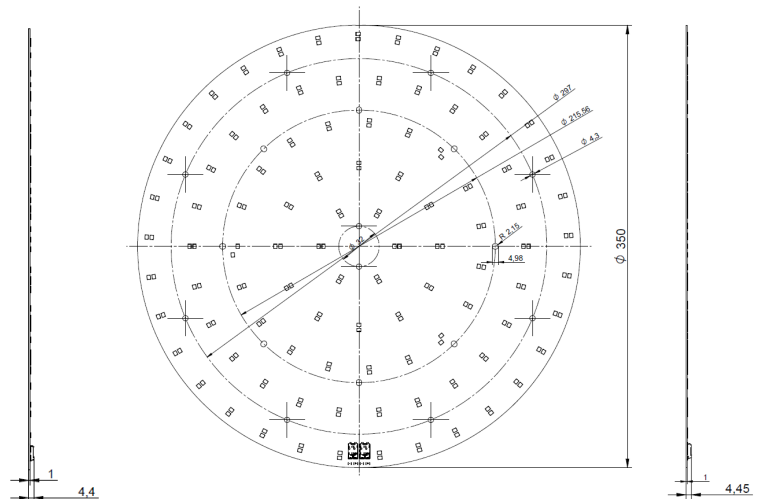
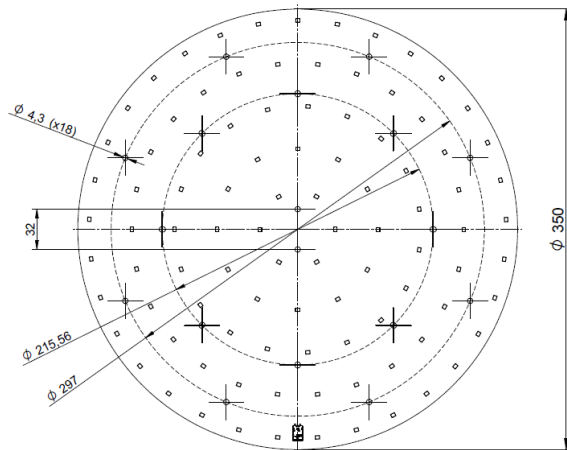
for EH1.1 G3

Forward current	Tp temp.	L70 [h]		L80 [h]		L90 [h]	
		B50	B10	B50	B10	B50	B10
If nom	45°C	>72 000	>72 000	>72 000	>72 000	64 000	60 000
	55°C	>72 000	>72 000	>72 000	>72 000	63 000	59 000
	65°C	>72 000	>72 000	>72 000	>72 000	62 000	57 000
	75°C	>72 000	>72 000	>72 000	>72 000	60 000	56 000
	85°C	>72 000	>72 000	>72 000	>72 000	59 000	55 000
If max	45°C	>72 000	>72 000	67 000	62 000	30 000	29 000
	55°C	>72 000	>72 000	66 000	61 000	30 000	28 000
	65°C	>72 000	>72 000	65 000	60 000	29 000	27 000
	75°C	>72 000	>72 000	65 000	59 000	29 000	26 000
	85°C	>72 000	>72 000	64 000	58 000	28 000	26 000

Calculated data based on LM80 LED data (12 000h)

Dimensions

TW version



Mounting

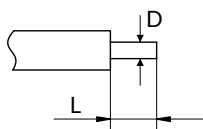
LED Modules cannot be exposed to tensile or compressive stresses. For this purpose it is necessary that the modules are assembled to a flat surface by only rounded head screws. Additionally plastic flat washer should be used to ensure creepage distance between screw's head and surface of the pcb. Max. torque for fixing: 0,5Nm.

LED modules are sensitive to electrostatic discharge (ESD). Follow safety regulations according to IEC 61340-5-1.

Round LED modules 350mm

Wiring

Wire cross section and strip length:



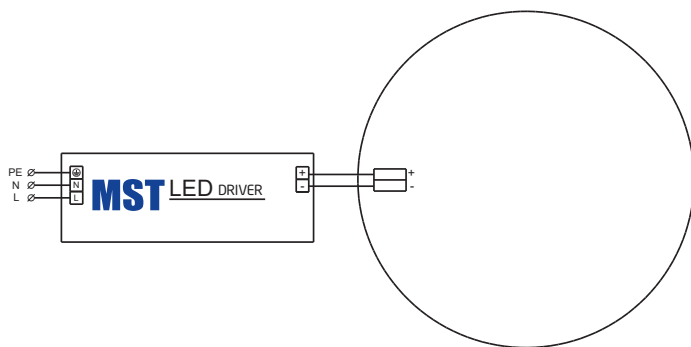
D - wire cross section (solid and flexible wires)	Min	Max
	0.2mm ²	0.75mm ²
	AWG 24	AWG 18

L - strip length	Min	Max
	8mm	9mm

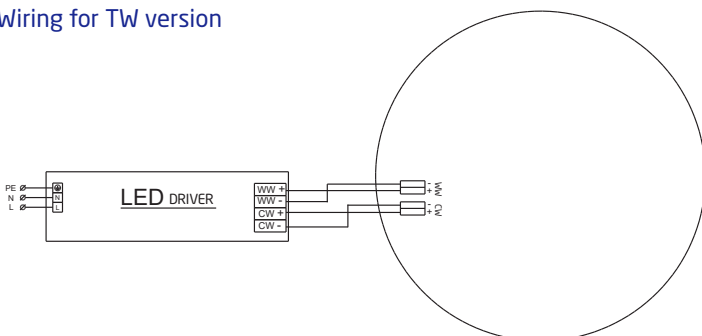
Opening for the release of wires from the top
with release pin Electroterminal art. 881 167 884:



Connections



Wiring for TW version



Energy Label / EPREL database

To obtain Energy Label for this product visit <https://eprel.ec.europa.eu/> and enter model identifier

Model identifier consists of 10 digits XXXX XXX XXX. It is printed directly on the LED module or on product label. This is the number you can see in EPREL database.

Ordering code consist of 12 digits XXXX XXX XXX46. Additional last two digits means packaging of the product.

Round LED modules 350mm

Ordering codes

Product name	Ordering code	Pieces per box	Pieces per pallet	Box dimensions [mm]
RdLED 350mm 4000lm 827-865 36V CJ G4	1010 147 72946	12	1008	363 x 363 x 58
RdLED 350mm 4000lm 827-865 144V CJ G4	1010 147 73046	12	1008	363 x 363 x 58
RdLED 350mm 4000lm 830 36V CJ G4	1010 147 72546	12	1008	363 x 363 x 58
RdLED 350mm 4000lm 830 144V CJ G4	1010 147 72746	12	1008	363 x 363 x 58
RdLED 350mm 4000lm 840 36V CJ G4	1010 147 72646	12	1008	363 x 363 x 58
RdLED 350mm 4000lm 840 144V CJ G4	1010 147 72846	12	1008	363 x 363 x 58
RdLED 350mm 4000lm 827-865 36V CN G3	1010 137 99546	12	1008	363 x 363 x 58
RdLED 350mm 4000lm 827-865 144V CN G3	1010 137 82246	12	1008	363 x 363 x 58
RdLED 350mm 4000lm 830 36V CN G3	1010 147 36846	12	1008	363 x 363 x 58
RdLED 350mm 4000lm 830 144V CN G3	1010 147 37046	12	1008	363 x 363 x 58
RdLED 350mm 4000lm 840 36V CN G3	1010 147 36946	12	1008	363 x 363 x 58
RdLED 350mm 4000lm 840 144V CN G3	1010 147 37146	12	1008	363 x 363 x 58
RdLED 350mm 4000lm 827-865 36V LG G2	1010 147 72346	12	1008	363 x 363 x 58
RdLED 350mm 4000lm 827-865 144V LG G2	1010 147 72446	12	1008	363 x 363 x 58
RdLED 350mm 4000lm 830 36V LG G2	1010 147 71946	12	1008	363 x 363 x 58
RdLED 350mm 4000lm 830 144V LG G2	1010 147 72146	12	1008	363 x 363 x 58
RdLED 350mm 4000lm 840 36V LG G2	1010 147 72046	12	1008	363 x 363 x 58
RdLED 350mm 4000lm 840 144V LG G2	1010 147 72246	12	1008	363 x 363 x 58
RdLED 350mm 4000lm 927 36V EH1.1 G3	1010 117 68846	12	1008	363 x 363 x 58
RdLED 350mm 4000lm 927 144V EH1.1 G3	1010 117 68546	12	1008	363 x 363 x 58
RdLED 350mm 4000lm 930 36V EH1.1 G3	1010 117 68946	12	1008	363 x 363 x 58
RdLED 350mm 4000lm 930 144V EH1.1 G3	1010 117 68646	12	1008	363 x 363 x 58
RdLED 350mm 4000lm 940 36V EH1.1 G3	1010 117 69046	12	1008	363 x 363 x 58
RdLED 350mm 4000lm 940 144V EH1.1 G3	1010 117 68746	12	1008	363 x 363 x 58