

Linear LED modules 1120x28mm DAISY-28X1 2C

A linear solution for premium class indoor lighting. Optimized for LEDi's DAISY-28X1 (variant 4X1) & BRIANNA optics.

Product description

- Long life-time
- Built-in, constant current LED module
- Re-workable push-in terminals enabling easy connection
- Compliance and approval: CE, ENEC
- 2C - two connectors for series system, also recognized as a high voltage system - non-SELV
- Available CCT from 2700K to 6500K and CRI 80, 90



The image shows version 2C. The number of connectors may vary depending on the type of module.



LinLED 2C CRI 80 Optimum G1

Product name	Ordering code	Colour temperature [K]	Current nominal If nom [mA]	Luminous flux ¹ φ [lm]	Useful luminous flux ² [lm]	Voltage ¹ Vf [V]	Power ¹ P [W]	Efficacy ¹ [lm/W]	Current minimum If min ³ [mA]	Current maximum If max [mA]	Energy Efficiency Class
LinLED 1120x28mm 2x2200lm 827-865 2x2C 84V DAISY-28X1 G1	1010 117 62446	2700	165	2109	2174	80	13	161	20	300	C
		6500	165	2283	2354	80	13	174	20	300	
LinLED 1120x28mm 4400lm 830 2C 84V DAISY-28X1 G1	1010 117 62546	3000	330	4344	4478	80	26	166	40	600	C
LinLED 1120x28mm 4400lm 840 2C 84V DAISY-28X1 G1	1010 117 62646	4000	330	4566	4707	80	26	174	40	600	C

¹At nominal current and T_p

²At nominal current and 25°C

³It is recommended not to operate below minimum current in order to avoid un-even brightness

Tolerance range for optical and electrical ±10%

Temperature & humidity

Specification item	Unit	Value
T _p	[°C]	45
T _p rated	[°C]	65
T _c	[°C]	85
Relative humidity (non-condensing)	[%]	5 ... 85
Storage ambient temperature	[°C]	-25 ... +85
Storage relative humidity (non-condensing)	[%]	5 ... 85

T_p - Temperature related to the performance parameters of the LED modules

T_p rated - Maximum operating temperature to which the rated performance characteristics are declared

T_c - Highest permissible value for safe operation

Technical data

Specification item	Unit	Value
Classification acc. to IEC 62031		built-in
Working voltage		350
Beam angle	[deg]	120
Initial color consistency	[SDCM]	3
Photobiological safety		RG1 unlimited

Color coordinates

According to CIE 1931

Specification item	CIE _x	CIE _y
2700K	0.4578	0.4101
3000K	0.4338	0.4030
4000K	0.3818	0.3797
6500K	0.3123	0.3282

Linear LED modules 1120x28mm DAISY-28X1 2C

Certificates & standards

Specification item	Compliant
ENEC	Yes
CE	Yes
RoHS	Yes
REACH	Yes
Zhaga	No
IP rating	No IP rating

Lumen maintenance

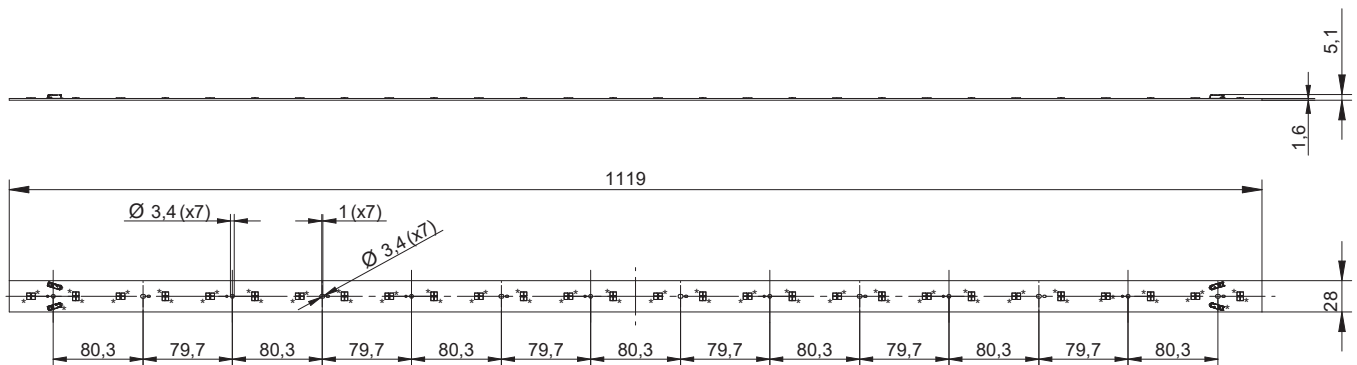
LinLED CRI 80

Forward current	Tp temp.	L70 [h]		L80 [h]		L90 [h]	
		B50	B10	B50	B10	B50	B10
If nom	45°C	>72 000	>72 000	>72 000	>72 000	68 000	57 000
	55°C	>72 000	>72 000	>72 000	>72 000	68 000	57 000
	65°C	>72 000	>72 000	>72 000	>72 000	66 000	56 000
	75°C	>72 000	>72 000	>72 000	>72 000	64 000	55 000
	85°C	>72 000	>72 000	>72 000	>72 000	63 000	54 000
If max	45°C	>72 000	>72 000	>72 000	>72 000	51 000	39 000
	55°C	>72 000	>72 000	>72 000	>72 000	51 000	39 000
	65°C	>72 000	>72 000	>72 000	>72 000	48 000	37 000
	75°C	>72 000	>72 000	>72 000	>72 000	45 000	35 000
	85°C	>72 000	>72 000	>72 000	69 000	43 000	34 000

reported data based on LM80 LED data (@65mA 17000h / @160mA & 200mA 12000h)

Dimensions

Product name	Ordering code	Connectors (*)
LinLED 1120x28mm 2x2200lm 827-865 2x2C 84V DAISY-28X1 G1	1010 117 62446	Yes
LinLED 1120x28mm 4400lm 830 2C 84V DAISY-28X1 G1	1010 117 62546	No
LinLED 1120x28mm 4400lm 840 2C 84V DAISY-28X1 G1	1010 117 62646	No



Mounting

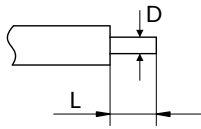
LED Modules cannot be exposed to tensile or compressive stresses. For this purpose it is necessary that the modules are assembled to a flat surface by only rounded head screws. Additionally plastic flat washer should be used to ensure creepage distance between screw's head and surface of the pcb. Max. torque for fixing: 0,5Nm.

LED modules are sensitive to electrostatic discharge (ESD). Follow safety regulations according to IEC 61340-5-1.

Linear LED modules 1120x28mm DAISY-28X1 2C

Wiring

Wire cross section and strip length:



D - wire cross section (solid and flexible wires)	Min	Max
	0.2mm ²	0.75mm ²
	AWG 24	AWG 18

L - strip length	Min	Max
	8mm	9mm

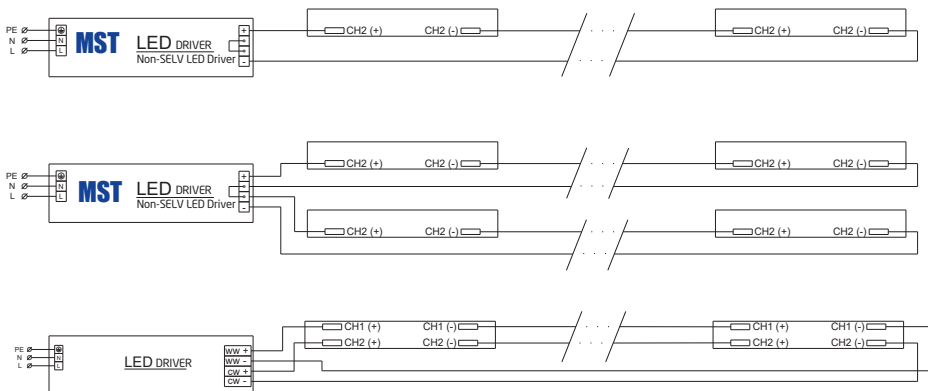
Opening for the release of wires from the top with release pin Electroterminal art. 881 167 884:



Connections

Max number of modules	Unit	Series	Parallel
LinLED 1120x28mm...	[pcs]	4	-

Wiring for series connection system (2C)



Energy Label / EPREL database

To obtain Energy Label for this product visit <https://eprel.ec.europa.eu/> and enter model identifier

Model identifier consists of 10 digits XXXX XXX XXX. It is printed directly on the LED module or on product label. This is the number you can see in EPREL database.

Ordering code consist of 12 digits XXXX XXX XXX46. Additional last two digits means packaging of the product.

Ordering codes

Product name	Ordering code	Pieces per box	Pieces per pallet	Box dimensions [mm]
LinLED 1120x28mm 2x2200lm 827-865 2x2C 84V DAISY-28X1 G1	1010 117 62446	135	4050	1198 x 266 x 83
LinLED 1120x28mm 4400lm 830 2C 84V DAISY-28X1 G1	1010 117 62546	135	4050	1198 x 266 x 83
LinLED 1120x28mm 4400lm 840 2C 84V DAISY-28X1 G1	1010 117 62646	135	4050	1198 x 266 x 83