

Linear LED modules 1120x28mm DAISY-28x1 2C

A linear solution for premium class indoor lighting. Optimized for LEDi's DAISY-28x1 optics (variant 4x1).

Product description

- Long life-time
- Built-in, constant current LED module
- Re-workable push-in terminals enabling easy connection
- Compliance and approval: CE
- 2C - two connectors for series system, also recognized as a high voltage system - non-SELV
- Available CCT from 2700K to 6500K and CRI 80, 90



The image shows version 2C. The number of connectors may vary depending on the type of module.



LinLED 2C CRI 80 Optimum G1

| Product name | Ordering code | Colour temperature [K] | Current nominal If nom [mA] | Luminous flux ¹ φ [lm] | Useful luminous flux ² [lm] | Voltage ¹ Vf [V] | Power ¹ P [W] | Efficacy ¹ [lm/W] | Current minimum If min ³ [mA] | Current maximum If max [mA] | Energy Efficiency Class |
|---|----------------|------------------------|-----------------------------|-----------------------------------|--|-----------------------------|--------------------------|------------------------------|--|-----------------------------|-------------------------|
| LinLED 1120x28mm 2x2200lm 827-865 2x2C 84V Opt G1 | 1010 117 62446 | 2700 | 165 | 2109 | 2174 | 80 | 13 | 161 | 20 | 300 | C |
| | | 6500 | 165 | 2283 | 2354 | 80 | 13 | 174 | 20 | 300 | |
| LinLED 1120x28mm 2200lm 830 2C 84V Opt G1 | 1010 117 62246 | 3000 | 165 | 2172 | 2239 | 80 | 13 | 166 | 20 | 300 | C |
| | | | 330 | 4344 | 4478 | 80 | 26 | 166 | 40 | 600 | |
| LinLED 1120x28mm 4400lm 830 2C 84V Opt G1 | 1010 117 62546 | 4000 | 165 | 2283 | 2354 | 80 | 13 | 174 | 20 | 300 | C |
| LinLED 1120x28mm 2200lm 840 2C 84V Opt G1 | 1010 117 62346 | | 330 | 4566 | 4707 | 80 | 26 | 174 | 40 | 600 | C |

¹At nominal current and T_p

²At nominal current and 25°C

³It is recommended not to operate below minimum current in order to avoid un-even brightness
Tolerance range for optical and electrical ±10%

Temperature & humidity

| Specification item | Unit | Value |
|--|------|-------------|
| T _p | [°C] | 45 |
| T _p rated | [°C] | 65 |
| T _c | [°C] | 85 |
| Relative humidity (non-condensing) | [%] | 5 ... 85 |
| Storage ambient temperature | [°C] | -25 ... +85 |
| Storage relative humidity (non-condensing) | [%] | 5 ... 85 |

T_p - Temperature related to the performance parameters of the LED modules

T_p rated - Maximum operating temperature to which the rated performance characteristics are declared

T_c - Highest permissible value for safe operation

Technical data

| Specification item | Unit | Value |
|----------------------------------|--------|---------------|
| Classification acc. to IEC 62031 | | built-in |
| Working voltage | | 350 |
| Beam angle | [deg] | 120 |
| Initial color consistency | [SDCM] | 3 |
| Photobiological safety | | RG1 unlimited |

Color coordinates

According to CIE 1931

| Specification item | CIE _x | CIE _y |
|--------------------|------------------|------------------|
| 2700K | 0.4578 | 0.4101 |
| 3000K | 0.4338 | 0.4030 |
| 4000K | 0.3818 | 0.3797 |
| 6500K | 0.3123 | 0.3282 |

Linear LED modules 1120x28mm DAISY-28x1 2C

Certificates & standards

| Specification item | Compliant |
|--------------------|--------------|
| ENEC | Yes |
| CE | Yes |
| RoHS | Yes |
| REACH | Yes |
| Zhaga | No |
| IP rating | No IP rating |

Lumen maintenance

LinLED CRI 80

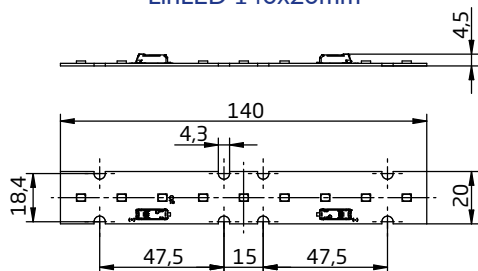
| Forward current | Tp temp. | L70 [h] | | L80 [h] | | L90 [h] | |
|-----------------|----------|---------|---------|---------|---------|---------|--------|
| | | B50 | B10 | B50 | B10 | B50 | B10 |
| If nom | 45°C | >72 000 | >72 000 | >72 000 | >72 000 | 68 000 | 57 000 |
| | 55°C | >72 000 | >72 000 | >72 000 | >72 000 | 68 000 | 57 000 |
| | 65°C | >72 000 | >72 000 | >72 000 | >72 000 | 66 000 | 56 000 |
| | 75°C | >72 000 | >72 000 | >72 000 | >72 000 | 64 000 | 55 000 |
| | 85°C | >72 000 | >72 000 | >72 000 | >72 000 | 63 000 | 54 000 |
| If max | 45°C | >72 000 | >72 000 | >72 000 | >72 000 | 51 000 | 39 000 |
| | 55°C | >72 000 | >72 000 | >72 000 | >72 000 | 51 000 | 39 000 |
| | 65°C | >72 000 | >72 000 | >72 000 | >72 000 | 48 000 | 37 000 |
| | 75°C | >72 000 | >72 000 | >72 000 | >72 000 | 45 000 | 35 000 |
| | 85°C | >72 000 | >72 000 | >72 000 | 69 000 | 43 000 | 34 000 |

reported data based on LM80 LED data (@65mA 17000h / @160mA & 200mA 12000h)

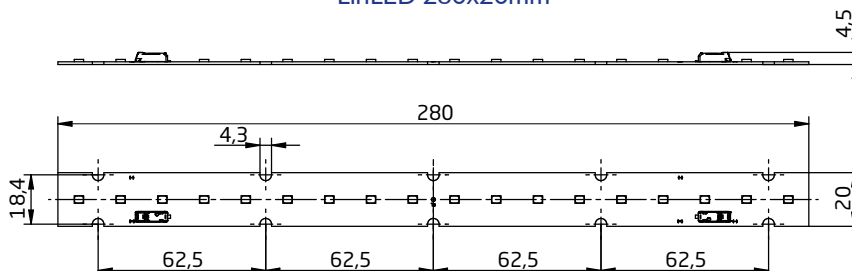
Dimensions

| Product name | Ordering code | Connectors (*) |
|---|----------------|----------------|
| LinLED 1120x28mm 2x2200lm 827-865 2x2C 84V Opt G1 | 1010 117 62446 | Yes |
| LinLED 1120x28mm 2200lm 830 2C 84V Opt G1 | 1010 117 62246 | No |
| LinLED 1120x28mm 4400lm 830 2C 84V Opt G1 | 1010 117 62546 | No |
| LinLED 1120x28mm 2200lm 840 2C 84V Opt G1 | 1010 117 62346 | No |
| LinLED 1120x28mm 4400lm 840 2C 84V Opt G1 | 1010 117 62646 | No |

LinLED 140x20mm



LinLED 280x20mm



Linear LED modules 1120x28mm DAISY-28x1 2C

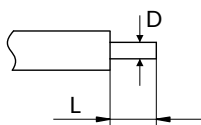
Mounting

LED Modules cannot be exposed to tensile or compressive stresses. For this purpose it is necessary that the modules are assembled to a flat surface by only rounded head screws. Additionally plastic flat washer should be used to ensure creepage distance between screw's head and surface of the pcb. Max. torque for fixing: 0,5Nm.

LED modules are sensitive to electrostatic discharge (ESD). Follow safety regulations according to IEC 61340-5-1.

Wiring

Wire cross section and strip length:



| D - wire cross section (solid and flexible wires) | Min | Max |
|--|--------------------|---------------------|
| | 0.2mm ² | 0.75mm ² |
| | AWG 24 | AWG 18 |

| L - strip length | Min | Max |
|------------------|-----|-----|
| | 8mm | 9mm |

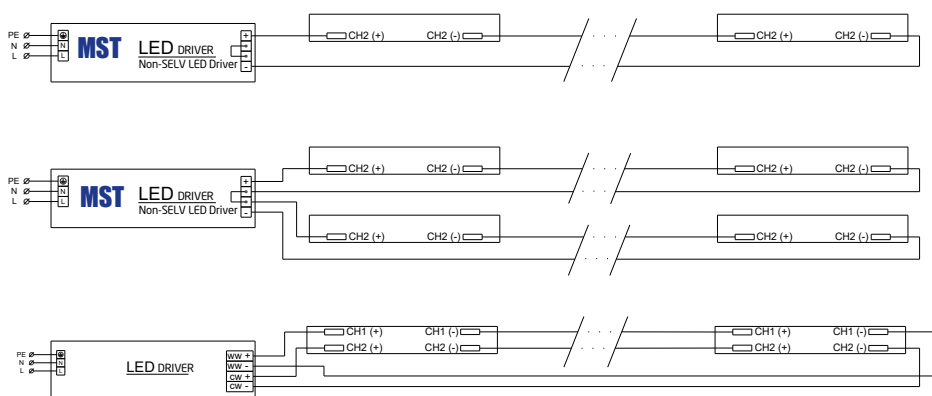
Opening for the release of wires from the top with release pin Electroterminal art. 881 167 884:



Connections

| Max number of modules | Unit | Series | Parallel |
|-----------------------|-------|--------|----------|
| LinLED 1120x28mm... | [pcs] | 4 | - |

Wiring for series connection system (2C)



Linear LED modules 1120x28mm DAISY-28x1 2C

Energy Label / EPREL database

To obtain Energy Label for this product visit <https://eprel.ec.europa.eu/> and enter model identifier

Model identifier consists of 10 digits XXXX XXX XXX. It is printed directly on the LED module or on product label. This is the number you can see in EPREL database.

Ordering code consist of 12 digits XXXX XXX XXX46. Additional last two digits means packaging of the product.

Ordering codes

| Product name | Ordering code | Pieces per box | Pieces per pallet | Box dimensions [mm] |
|---|----------------|----------------|-------------------|---------------------|
| LinLED 1120x28mm 2x2200lm 827-865 2x2C 84V Opt G1 | 1010 117 62446 | 96 | 2880 | 1138 x 236 x 70 |
| LinLED 1120x28mm 2200lm 830 2C 84V Opt G1 | 1010 117 62246 | 96 | 2880 | 1138 x 236 x 70 |
| LinLED 1120x28mm 4400lm 830 2C 84V Opt G1 | 1010 117 62546 | 96 | 2880 | 1138 x 236 x 70 |
| LinLED 1120x28mm 2200lm 840 2C 84V Opt G1 | 1010 117 62346 | 96 | 2880 | 1138 x 236 x 70 |
| LinLED 1120x28mm 4400lm 840 2C 84V Opt G1 | 1010 117 62646 | 96 | 2880 | 1138 x 236 x 70 |