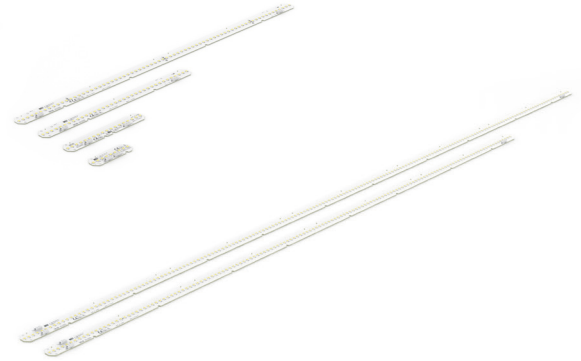


Linear LED modules 1100lm 36V per 1ft 2C

Product description

- Long life-time
- Built-in, constant current LED module
- Re-workable push-in terminals enabling easy connection
- Compliance and approval: CE, ENEC
- 2C - two connectors for series system, also recognized as a high voltage system - non-SELV
- Other CCT and CRI on request



LinLED CRI 80 S8 G5

Product name	Ordering code	Colour temperature [K]	Current nominal If nom [mA]	Luminous flux ¹ φ [lm]	Useful luminous flux ² [lm]	Voltage ¹ Vf [V]	Power ¹ P [W]	Efficacy ¹ [lm/W]	Current minimum If min ³ [mA]	Current maximum If max [mA]	Energy Efficiency Class
LinLED 70x20mm 275lm 830 2C 9V S8 G5	1010 147 98646	3000	170	268	276	8.0	1.4	197	30	600	C
LinLED 140x20mm 550lm 830 2C 18V S8 G5	1010 147 98746		170	537	553	16	2.7	197	30	600	C
LinLED 280x20mm 1100lm 830 2C 36V S8 G5	1010 147 98846		170	1074	1106	32	5.4	197	30	600	B
LinLED 560x20mm 2200lm 830 2C 72V S8 G5	1010 147 98946		170	2148	2211	64	11	197	30	600	B
LinLED 1120x20mm 4400lm 830 2C+R 144V S8 G5	1010 147 99046		170	4296	4423	128	22	197	30	600	B
LinLED 1400x20mm 5500lm 830 2C+R 180V S8 G5	1010 147 99146		170	5369	5528	160	27	197	30	600	B
LinLED 70x20mm 275lm 840 2C 9V S8 G5	1010 147 99246	4000	170	284	292	8.0	1.4	208	30	600	B
LinLED 140x20mm 550lm 840 2C 18V S8 G5	1010 147 99346		170	567	584	16	2.7	208	30	600	B
LinLED 280x20mm 1100lm 840 2C 36V S8 G5	1010 147 99446		170	1135	1168	32	5.4	208	30	600	B
LinLED 560x20mm 2200lm 840 2C 72V S8 G5	1010 147 99546		170	2269	2337	64	11	208	30	600	B
LinLED 1120x20mm 4400lm 840 2C+R 144V S8 G5	1010 147 99646		170	4539	4673	128	22	208	30	600	B
LinLED 1400x20mm 5500lm 840 2C+R 180V S8 G5	1010 147 99746		170	5674	5842	160	27	208	30	600	B

LinLED CRI 80 CJ G4

Product name	Ordering code	Colour temperature [K]	Current nominal If nom [mA]	Luminous flux ¹ φ [lm]	Useful luminous flux ² [lm]	Voltage ¹ Vf [V]	Power ¹ P [W]	Efficacy ¹ [lm/W]	Current minimum If min ³ [mA]	Current maximum If max [mA]	Energy Efficiency Class
LinLED 70x20mm 275lm 830 2C 9V CJ G4	1010 127 92546	3000	175	270	277	8.0	1.4	193	30	900	C
LinLED 140x20mm 550lm 830 2C 18V CJ G4	1010 127 92646		175	540	554	16	2.8	193	30	900	C
LinLED 280x20mm 1100lm 830 2C 36V CJ G4	1010 127 92746		175	1080	1107	32	5.6	193	30	900	C
LinLED 560x20mm 2200lm 830 2C 72V CJ G4	1010 127 92846		175	2159	2214	64	11.2	193	30	900	C
LinLED 1120x20mm 4400lm 830 2C+R 144V CJ G4	1010 127 92946		175	4318	4428	128	22.4	193	30	900	C
LinLED 1400x20mm 5500lm 830 2C+R 180V CJ G4	1010 127 93046		175	5398	5535	160	28.0	193	30	900	C
LinLED 70x20mm 275lm 840 2C 9V CJ G4	1010 127 93146	4000	175	281	288	8.0	1.4	201	30	900	B
LinLED 140x20mm 550lm 840 2C 18V CJ G4	1010 127 93246		175	561	576	16	2.8	201	30	900	B
LinLED 280x20mm 1100lm 840 2C 36V CJ G4	1010 127 93346		175	1123	1151	32	5.6	201	30	900	B
LinLED 560x20mm 2200lm 840 2C 72V CJ G4	1010 127 93446		175	2245	2303	64	11.2	201	30	900	B
LinLED 1120x20mm 4400lm 840 2C+R 144V CJ G4	1010 127 93546		175	4491	4605	128	22.4	201	30	900	B
LinLED 1400x20mm 5500lm 840 2C+R 180V CJ G4	1010 127 93646		175	5614	5757	160	28.0	201	30	900	B

LinLED CRI 80 CN G3

Product name	Ordering code	Colour temperature [K]	Current nominal If nom [mA]	Luminous flux ¹ φ [lm]	Useful luminous flux ² [lm]	Voltage ¹ Vf [V]	Power ¹ P [W]	Efficacy ¹ [lm/W]	Current minimum If min ³ [mA]	Current maximum If max [mA]	Energy Efficiency Class
LinLED 70x20mm 275lm 830 2C 9V CN G3	1010 137 71146	3000	185	273	282	8.1	1.5	182	30	450	C
LinLED 140x20mm 550lm 830 2C 18V CN G3	1010 137 71246		185	546	565	16	3.0	182	30	450	C
LinLED 280x20mm 1100lm 830 2C 36V CN G3	1010 137 71346		185	1091	1129	32	6.0	182	30	450	C
LinLED 560x20mm 2200lm 830 2C 72V CN G3	1010 137 71446		185	2183	2259	65	12.0	182	30	450	C
LinLED 1120x20mm 4400lm 830 2C+R 144V CN G3	1010 147 10246		185	4365	4518	130	24.0	182	30	450	C
LinLED 1400x20mm 5500lm 830 2C+R 180V CN G3	1010 147 10346		185	5457	5647	162	30.0	182	30	450	C
LinLED 70x20mm 275lm 840 2C 9V CN G3	1010 137 71546	4000	185	288	298	8.1	1.5	192	30	450	C
LinLED 140x20mm 550lm 840 2C 18V CN G3	1010 137 71646		185	576	596	16	3.0	192	30	450	C
LinLED 280x20mm 1100lm 840 2C 36V CN G3	1010 137 71746		185	1151	1192	32	6.0	192	30	450	C
LinLED 560x20mm 2200lm 840 2C 72V CN G3	1010 137 71846		185	2303	2383	65	12.0	192	30	450	C
LinLED 1120x20mm 4400lm 840 2C+R 144V CN G3	1010 147 10446		185	4605	4766	130	24.0	192	30	450	C
LinLED 1400x20mm 5500lm 840 2C+R 180V CN G3	1010 147 10546		185	5757	5958	162	30.0	192	30	450	C

Linear LED modules 1100lm 36V per 1ft 2C

LinLED CRI 80 LG G2

Product name	Ordering code	Colour temperature [K]	Current nominal If nom [mA]	Luminous flux ¹ ϕ [lm]	Useful luminous flux ² [lm]	Voltage ¹ Vf [V]	Power ¹ P [W]	Efficacy ¹ [lm/W]	Current minimum If min ³ [mA]	Current maximum If max [mA]	Energy Efficiency Class	
LinLED 70x20mm 275lm 830 2C 9V LG G2	1010 147 17646	3000	190	271	279	8.3	1.6	172	30	600	C	
LinLED 140x20mm 550lm 830 2C 18V LG G2	1010 147 17746		190	542	559	16	3.1	172	30	600	C	
LinLED 280x20mm 1100lm 830 2C 36V LG G2	1010 147 17846		190	1083	1117	33	6.3	172	30	600	C	
LinLED 560x20mm 2200lm 830 2C 72V LG G2	1010 147 17946		190	2166	2234	66	12.6	172	30	600	C	
LinLED 1120x20mm 4400lm 830 2C+R 144V LG G2	1010 147 18046		190	4332	4468	132	25.1	172	30	600	C	
LinLED 1400x20mm 5500lm 830 2C+R 180V LG G2	1010 147 18146		190	5415	5585	165	31.4	172	30	600	C	
LinLED 70x20mm 275lm 840 2C 9V LG G2	1010 147 18246		4000	190	288	297	8.3	1.6	183	30	600	C
LinLED 140x20mm 550lm 840 2C 18V LG G2	1010 147 18346			190	575	593	16	3.1	183	30	600	C
LinLED 280x20mm 1100lm 840 2C 36V LG G2	1010 147 18446			190	1151	1187	33	6.3	183	30	600	C
LinLED 560x20mm 2200lm 840 2C 72V LG G2	1010 147 18546			190	2302	2374	66	12.6	183	30	600	C
LinLED 1120x20mm 4400lm 840 2C+R 144V LG G2	1010 147 18646	190		4603	4748	132	25.1	183	30	600	C	
LinLED 1400x20mm 5500lm 840 2C+R 180V LG G2	1010 147 18746	190		5754	5935	165	31.4	183	30	600	C	

LinLED CRI 80 Opt G3.1

Product name	Ordering code	Colour temperature [K]	Current nominal If nom [mA]	Luminous flux ¹ ϕ [lm]	Useful luminous flux ² [lm]	Voltage ¹ Vf [V]	Power ¹ P [W]	Efficacy ¹ [lm/W]	Current minimum If min ³ [mA]	Current maximum If max [mA]	Energy Efficiency Class
LinLED 70x20mm 275lm 830 2C 9V Opt G3.1	1010 127 66746	3000	175	267	277	8	1.4	185	30	450	C
LinLED 140x20mm 550lm 830 2C 18V Opt G3.1	1010 127 66846		175	534	553	16	2.9	185	30	450	C
LinLED 280x20mm 1100lm 830 2C 36V Opt G3.1	1010 127 66946		175	1067	1106	33	5.8	185	30	450	C
LinLED 560x20mm 2200lm 830 2C 72V Opt G3.1	1010 127 67046		175	2135	2213	66	11.5	185	30	450	C

LinLED CRI 90 S8 K G7

Product name	Ordering code	Colour temperature [K]	Current nominal If nom [mA]	Luminous flux ¹ ϕ [lm]	Useful luminous flux ² [lm]	Voltage ¹ Vf [V]	Power ¹ P [W]	Efficacy ¹ [lm/W]	Current minimum If min ³ [mA]	Current maximum If max [mA]	Energy Efficiency Class	
LinLED 70x20mm 275lm 930 2C 9V S8 K G7	1010 147 18846	3000	175	273	278	8.0	1.4	195	30	450	C	
LinLED 140x20mm 550lm 930 2C 18V S8 K G7	1010 147 18946		175	546	556	16	2.8	195	30	450	C	
LinLED 280x20mm 1100lm 930 2C 36V S8 K G7	1010 147 19046		175	1092	1113	32	5.6	195	30	450	C	
LinLED 560x20mm 2200lm 930 2C 72V S8 K G7	1010 147 19146		175	2184	2225	64	11.2	195	30	450	C	
LinLED 1120x20mm 4400lm 930 2C+R 144V S8 K G7	1010 147 19246		175	4369	4450	128	22.4	195	30	450	C	
LinLED 1400x20mm 5500lm 930 2C+R 180V S8 K G7	1010 147 19346		175	5461	5563	160	28.0	195	30	450	C	
LinLED 70x20mm 275lm 940 2C 9V S8 K G7	1010 147 19446		4000	175	289	294	8.0	1.4	206	30	450	B
LinLED 140x20mm 550lm 940 2C 18V S8 K G7	1010 147 19546			175	577	588	16	2.8	206	30	450	B
LinLED 280x20mm 1100lm 940 2C 36V S8 K G7	1010 147 19646			175	1155	1176	32	5.6	206	30	450	B
LinLED 560x20mm 2200lm 940 2C 72V S8 K G7	1010 147 19746			175	2309	2352	64	11.2	206	30	450	B
LinLED 1120x20mm 4400lm 940 2C+R 144V S8 K G7	1010 147 19846	175		4618	4704	128	22.4	206	30	450	B	
LinLED 1400x20mm 5500lm 940 2C+R 180V S8 K G7	1010 147 19946	175		5773	5880	160	28.0	206	30	450	B	

LinLED CRI 90 S5 K G6

Product name	Ordering code	Colour temperature [K]	Current nominal If nom [mA]	Luminous flux ¹ ϕ [lm]	Useful luminous flux ² [lm]	Voltage ¹ Vf [V]	Power ¹ P [W]	Efficacy ¹ [lm/W]	Current minimum If min ³ [mA]	Current maximum If max [mA]	Energy Efficiency Class	
LinLED 70x20mm 275lm 930 2C 9V S5 K G6	1010 147 20046	3000	180	272	277	8	1.5	187	30	450	C	
LinLED 140x20mm 550lm 930 2C 18V S5 K G6	1010 147 20146		180	544	554	16	2.9	187	30	450	C	
LinLED 280x20mm 1100lm 930 2C 36V S5 K G6	1010 147 20246		180	1087	1107	32	5.8	187	30	450	C	
LinLED 560x20mm 2200lm 930 2C 72V S5 K G6	1010 147 20346		180	2174	2215	65	11.6	187	30	450	C	
LinLED 1120x20mm 4400lm 930 2C+R 144V S5 K G6	1010 147 20446		180	4349	4430	129	23.2	187	30	450	C	
LinLED 1400x20mm 5500lm 930 2C+R 180V S5 K G6	1010 147 20546		180	5436	5537	161	29.0	187	30	450	C	
LinLED 70x20mm 275lm 940 2C 9V S5 K G6	1010 147 20646		4000	180	285	291	8	1.5	197	30	450	C
LinLED 140x20mm 550lm 940 2C 18V S5 K G6	1010 147 20746			180	571	582	16	2.9	197	30	450	B
LinLED 280x20mm 1100lm 940 2C 36V S5 K G6	1010 147 20846			180	1142	1163	32	5.8	197	30	450	C
LinLED 560x20mm 2200lm 940 2C 72V S5 K G6	1010 147 20946			180	2284	2327	65	11.6	197	30	450	C
LinLED 1120x20mm 4400lm 940 2C+R 144V S5 K G6	1010 147 21046	180		4568	4653	129	23.2	197	30	450	C	
LinLED 1400x20mm 5500lm 940 2C+R 180V S5 K G6	1010 147 21146	180		5710	5816	161	29.0	197	30	450	C	

Linear LED modules 1100lm 36V per 1ft 2C

LinLED CRI 90 EH1.1 G3

Product name	Ordering code	Colour temperature [K]	Current nominal If nom [mA]	Luminous flux ¹ φ [lm]	Useful luminous flux ² [lm]	Voltage ¹ Vf [V]	Power ¹ P [W]	Efficacy ¹ [lm/W]	Current minimum If min ³ [mA]	Current maximum If max [mA]	Energy Efficiency Class
LinLED 70x20mm 275lm 930 2C 9V EH1.1 G3	1010 127 21146	3000	195	270	278	8.5	1.7	163	30	450	D
LinLED 140x20mm 550lm 930 2C 18V EH1.1 G3	1010 117 34246		195	539	556	17	3.3	163	30	450	D
LinLED 280x20mm 1100lm 930 2C 36V EH1.1 G3	1010 117 34546		195	1079	1111	34	6.6	163	30	450	D
LinLED 560x20mm 2200lm 930 2C 72V EH1.1 G3	1010 117 35446		195	2157	2222	68	13	163	30	450	D
LinLED 70x20mm 275lm 940 2C 9V EH1.1 G3	1010 127 21246	4000	195	287	295	8.5	1.7	173	30	450	C
LinLED 140x20mm 550lm 940 2C 18V EH1.1 G3	1010 117 34346		195	573	590	17	3.3	173	30	450	C
LinLED 280x20mm 1100lm 940 2C 36V EH1.1 G3	1010 117 34646		195	1146	1181	34	6.6	173	30	450	C
LinLED 560x20mm 2200lm 940 2C 72V EH1.1 G3	1010 117 35546		195	2292	2361	68	13	173	30	450	C

¹At nominal current and T_p

²At nominal current and 25°C

³It is recommended not to operate below minimum current in order to avoid un-even brightness

Tolerance range for optical and electrical ±10%

Temperature & humidity

Specification item	Unit	Value
T _p	[°C]	45
T _p rated	[°C]	65
T _c	[°C]	85
Relative humidity (non-condensing)	[%]	5 ... 85
Storage ambient temperature	[°C]	-25 ... +85
Storage relative humidity (non-condensing)	[%]	5 ... 85

T_p - Temperature related to the performance parameters of the LED modules

T_p rated - Maximum operating temperature to which the rated performance characteristics are declared

T_c - Highest permissible value for safe operation

Technical data

Specification item	Unit	Value
Classification acc. to IEC 62031		built-in
Working voltage	[Vdc]	350
Beam angle	[deg]	120
Initial color consistency	[SDCM]	3
Photobiological safety		RG1 unlimited

Color coordinates

According to CIE 1931

Specification item	CIEx	CIEy
2700K	0.4578	0.4101
3000K	0.4338	0.4030
4000K	0.3818	0.3797
6500K	0.3123	0.3282

Certificates & standards

Specification item	Compliant
ENEC	Yes
CE	Yes
RoHS	Yes
REACH	Yes
IP rating	No IP rating

Linear LED modules 1100lm 36V per 1ft 2C

Lumen maintenance

for LE G5, LG G2, LA G3

Forward current	Tp temp.	L70 [h]		L80 [h]		L90 [h]	
		B50	B10	B50	B10	B50	B10
If nom	45°C	>100 000	>100 000	>100 000	>100 000	>100 000	>100 000
	55°C	>100 000	>100 000	>100 000	>100 000	>100 000	>100 000
	65°C	>100 000	>100 000	>100 000	>100 000	>100 000	>100 000
	75°C	>100 000	>100 000	>100 000	>100 000	>100 000	98 000
	85°C	>100 000	>100 000	>100 000	>100 000	81 000	73 000
If max	45°C	50 000	46 000	32 000	29 000	16 000	15 000
	55°C	50 000	46 000	32 000	29 000	16 000	15 000
	65°C	50 000	46 000	32 000	29 000	16 000	15 000
	75°C	50 000	46 000	32 000	29 000	16 000	15 000
	85°C	50 000	46 000	32 000	29 000	16 000	15 000

Calculated data based on LM80 LED data (12 000h)

for S8 K G7, S7 K G7, S5 K G6

Forward current	Tp temp.	L70 [h]		L80 [h]		L90 [h]	
		B50	B10	B50	B10	B50	B10
If nom	45°C	>120 000	>120 000	>120 000	>120 000	109 000	106 000
	55°C	>120 000	>120 000	>120 000	>120 000	87 000	85 000
	65°C	>120 000	>120 000	>120 000	>120 000	71 000	69 000
	75°C	>120 000	>120 000	116 000	114 000	59 000	57 000
	85°C	>120 000	>120 000	98 000	96 000	49 000	47 000
If max	45°C	>120 000	>120 000	85 000	82 000	45 000	44 000
	55°C	108 000	104 000	69 000	68 000	36 000	35 000
	65°C	90 000	87 000	57 000	56 000	29 000	29 000
	75°C	75 000	74 000	48 000	47 000	24 000	24 000
	85°C	64 000	63 000	41 000	40 000	20 000	20 000

Calculated data based on LM80 LED data (20 000h)

for G3.1

Forward current	Tp temp.	L70 [h]		L80 [h]		L90 [h]	
		B50	B10	B50	B10	B50	B10
If nom	45°C	>100 000	>100 000	>100 000	>100 000	71 000	61 000
	55°C	>100 000	>100 000	>100 000	>100 000	71 000	61 000
	65°C	>100 000	>100 000	>100 000	>100 000	69 000	60 000
	75°C	>100 000	>100 000	>100 000	>100 000	68 000	59 000
	85°C	>100 000	>100 000	>100 000	>100 000	67 000	58 000
If max	45°C	>100 000	>100 000	>100 000	>100 000	51 000	39 000
	55°C	>100 000	>100 000	>100 000	>100 000	51 000	39 000
	65°C	>100 000	>100 000	>100 000	>100 000	48 000	37 000
	75°C	>100 000	>100 000	>100 000	>100 000	45 000	35 000
	85°C	>100 000	>100 000	>100 000	69 000	43 000	34 000

calculated data based on LM80 LED data (@65mA 17000h / @160mA & 200mA 12000h)

for CJ G4, CN G3

Forward current	Tp temp.	L70 [h]		L80 [h]		L90 [h]	
		B50	B10	B50	B10	B50	B10
If nom	45°C	>102 000	>102 000	>102 000	>102 000	>102 000	>102 000
	55°C	>102 000	>102 000	>102 000	>102 000	>102 000	>102 000
	65°C	>102 000	>102 000	>102 000	>102 000	89 000	88 000
	75°C	>102 000	>102 000	>102 000	>102 000	75 000	74 000
	85°C	>102 000	>102 000	>102 000	>102 000	64 000	63 000
If max	45°C	>102 000	>102 000	>102 000	>102 000	>102 000	>102 000
	55°C	>102 000	>102 000	>102 000	>102 000	90 000	89 000
	65°C	>102 000	>102 000	>102 000	>102 000	77 000	76 000
	75°C	>102 000	>102 000	>102 000	>102 000	65 000	64 000
	85°C	>102 000	>102 000	>102 000	>102 000	55 000	54 000

Reported data based on LM80 LED data (17 000h)

for EH1.1 G3

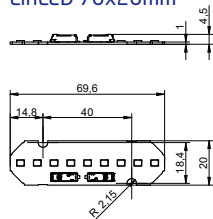
Forward current	Tp temp.	L70 [h]		L80 [h]		L90 [h]	
		B50	B10	B50	B10	B50	B10
If nom	45°C	>72 000	>72 000	>72 000	>72 000	>72 000	>72 000
	55°C	>72 000	>72 000	>72 000	>72 000	>72 000	>72 000
	65°C	>72 000	>72 000	>72 000	>72 000	>72 000	>72 000
	75°C	>72 000	>72 000	>72 000	>72 000	>72 000	>72 000
	85°C	>72 000	>72 000	>72 000	>72 000	>72 000	>72 000
If max	45°C	>72 000	>72 000	67 000	62 000	30 000	29 000
	55°C	>72 000	>72 000	66 000	61 000	30 000	28 000
	65°C	>72 000	>72 000	65 000	60 000	29 000	27 000
	75°C	>72 000	>72 000	65 000	59 000	29 000	26 000
	85°C	>72 000	>72 000	64 000	58 000	28 000	26 000

Calculated data based on LM80 LED data (12 000h)

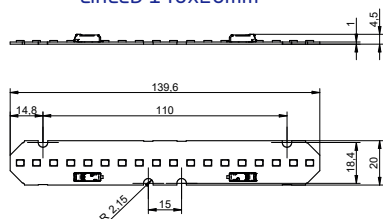
Linear LED modules 1100lm 36V per 1ft 2C

Dimensions

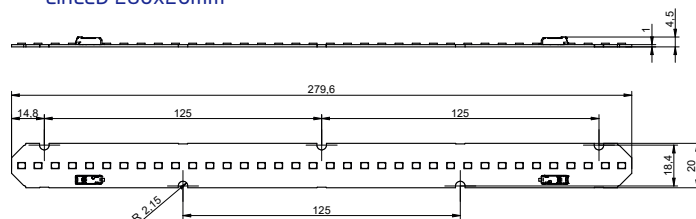
LinLED 70x20mm



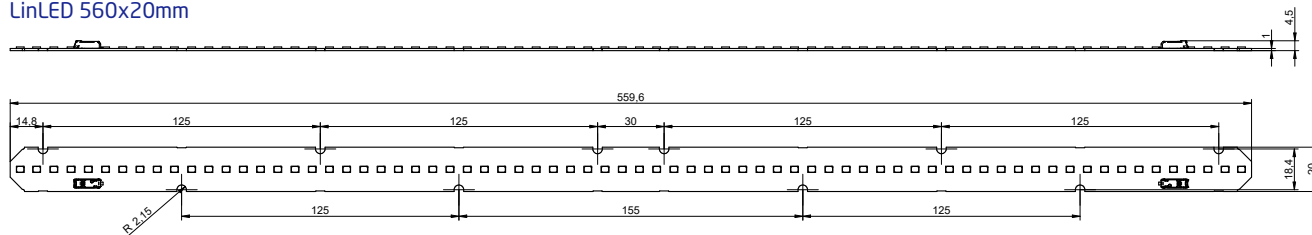
LinLED 140x20mm



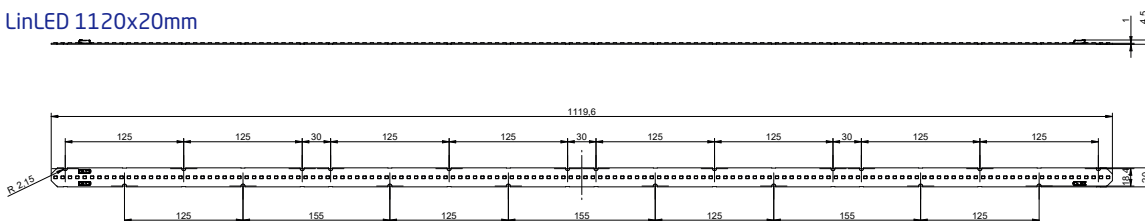
LinLED 280x20mm



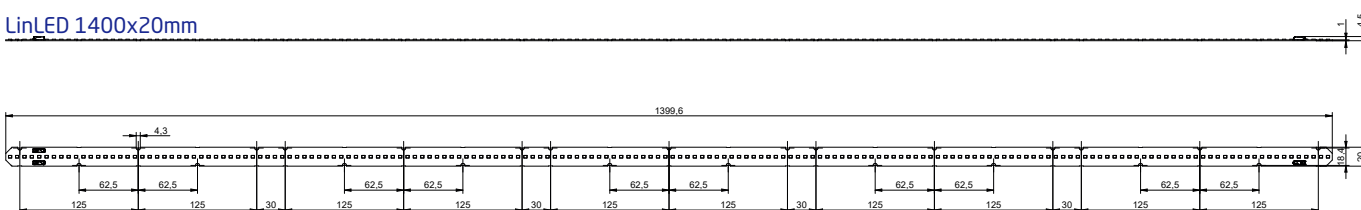
LinLED 560x20mm



LinLED 1120x20mm



LinLED 1400x20mm



Mounting

LED Modules cannot be exposed to tensile or compressive stresses. For this purpose it is necessary that the modules are assembled to a flat surface by only rounded head screws. Additionally plastic flat washer should be used to ensure creepage distance between screw's head and surface of the pcb. Max. torque for fixing: 0,5Nm.

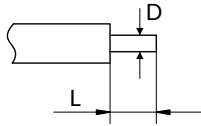
LED modules are sensitive to electrostatic discharge (ESD). Follow safety regulations according to IEC 61340-5-1.

Protection against electric shock must be provided by the luminaire's enclosure.

Linear LED modules 1100lm 36V per 1ft 2C

Wiring

Wire cross section and strip length:



D - wire cross section (solid and flexible wires)	Min	Max
	0.2mm ²	0.75mm ²
	AWG 24	AWG 18

L - strip length	Min	Max
	8mm	9mm

Opening for the release of wires from the top with release pin Electroterminal art. 881 167 884:

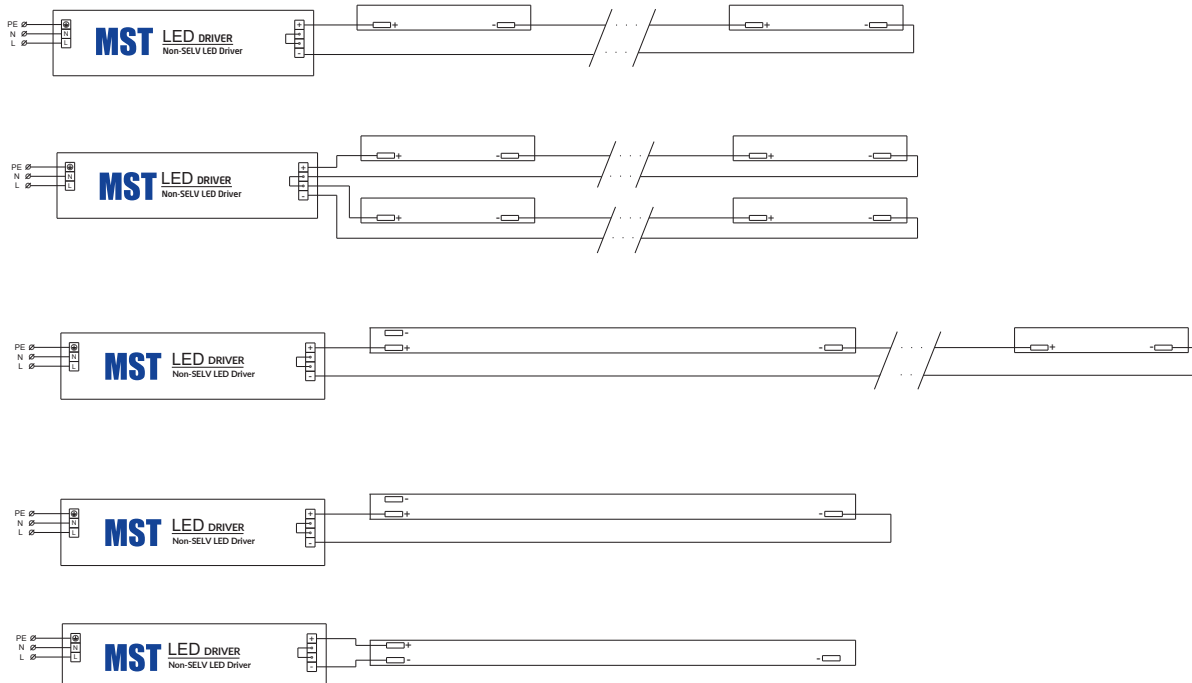


Connections

Max number of modules	Unit	Series	Parallel
LinLED 70x20mm	[pcs]	36	-
LinLED 140x20mm	[pcs]	18	-
LinLED 280x20mm	[pcs]	9	-
LinLED 560x20mm	[pcs]	4	-
LinLED 1120x20mm	[pcs]	2	-
LinLED 1400x20mm	[pcs]	1	-

You can combine different lengths of LED modules so that the maximum length does not exceed 2520mm

Wiring for series connection system (2C)



Energy Label / EPREL database

To obtain Energy Label for this product visit <https://eprel.ec.europa.eu/> and enter model identifier

Model identifier consists of 10 digits XXXX XXX XXX. It is printed directly on the LED module or on product label. This is the number you can see in EPREL database.

Ordering code consist of 12 digits XXXX XXX XXX46. Additional last two digits means packaging of the product.

Linear LED modules 1100lm 36V per 1ft 2C

Ordering codes

Product name CRI 80	Ordering code	Pieces per box	Pieces per pallet	Box dimensions [mm]
LinLED 70x20mm 275lm 830 2C 9V CJ G4	1010 127 92546	408	97920	150 x 266 x 83
LinLED 140x20mm 550lm 830 2C 18V CJ G4	1010 127 92646	204	48960	150 x 266 x 83
LinLED 280x20mm 1100lm 830 2C 36V CJ G4	1010 127 92746	204	24480	300 x 266 x 83
LinLED 560x20mm 2200lm 830 2C 72V CJ G4	1010 127 92846	204	12240	603 x 266 x 83
LinLED 1120x20mm 4400lm 830 2C+R 144V CJ G4	1010 127 92946	204	6120	1198 x 266 x 83
LinLED 1400x20mm 5500lm 830 2C+R 180V CJ G4	1010 127 93046	204	6120	1498 x 266 x 83
LinLED 70x20mm 275lm 840 2C 9V CJ G4	1010 127 93146	408	97920	150 x 266 x 83
LinLED 140x20mm 550lm 840 2C 18V CJ G4	1010 127 93246	204	48960	150 x 266 x 83
LinLED 280x20mm 1100lm 840 2C 36V CJ G4	1010 127 93346	204	24480	300 x 266 x 83
LinLED 560x20mm 2200lm 840 2C 72V CJ G4	1010 127 93446	204	12240	603 x 266 x 83
LinLED 1120x20mm 4400lm 840 2C+R 144V CJ G4	1010 127 93546	204	6120	1198 x 266 x 83
LinLED 1400x20mm 5500lm 840 2C+R 180V CJ G4	1010 127 93646	204	6120	1498 x 266 x 83
LinLED 70x20mm 275lm 830 2C 9V CN G3	1010 137 71146	408	97920	150 x 266 x 83
LinLED 140x20mm 550lm 830 2C 18V CN G3	1010 137 71246	204	48960	150 x 266 x 83
LinLED 280x20mm 1100lm 830 2C 36V CN G3	1010 137 71346	204	24480	300 x 266 x 83
LinLED 560x20mm 2200lm 830 2C 72V CN G3	1010 137 71446	204	12240	603 x 266 x 83
LinLED 70x20mm 275lm 840 2C 9V CN G3	1010 137 71546	408	97920	150 x 266 x 83
LinLED 140x20mm 550lm 840 2C 18V CN G3	1010 137 71646	204	48960	150 x 266 x 83
LinLED 280x20mm 1100lm 840 2C 36V CN G3	1010 137 71746	204	24480	300 x 266 x 83
LinLED 560x20mm 2200lm 840 2C 72V CN G3	1010 137 71846	204	12240	603 x 266 x 83
LinLED 70x20mm 275lm 930 2C 9V EH1.1 G3	1010 127 21146	408	97920	150 x 266 x 83
LinLED 140x20mm 550lm 930 2C 18V EH1.1 G3	1010 117 34246	204	48960	150 x 266 x 83
LinLED 280x20mm 1100lm 930 2C 36V EH1.1 G3	1010 117 34546	204	24480	300 x 266 x 83
LinLED 560x20mm 2200lm 930 2C 72V EH1.1 G3	1010 117 35446	204	12240	603 x 266 x 83
LinLED 70x20mm 275lm 940 2C 9V EH1.1 G3	1010 127 21246	408	97920	150 x 266 x 83
LinLED 140x20mm 550lm 940 2C 18V EH1.1 G3	1010 117 34346	204	48960	150 x 266 x 83
LinLED 280x20mm 1100lm 940 2C 36V EH1.1 G3	1010 117 34646	204	24480	300 x 266 x 83
LinLED 560x20mm 2200lm 940 2C 72V EH1.1 G3	1010 117 35546	204	12240	603 x 266 x 83
LinLED 1120x20mm 4400lm 830 2C+R 144V CN G3	1010 147 10246	204	6120	1198 x 266 x 83
LinLED 1400x20mm 5500lm 830 2C+R 180V CN G3	1010 147 10346	204	6120	1498 x 266 x 83
LinLED 1120x20mm 4400lm 840 2C+R 144V CN G3	1010 147 10446	204	6120	1198 x 266 x 83
LinLED 1400x20mm 5500lm 840 2C+R 180V CN G3	1010 147 10546	204	6120	1498 x 266 x 83
LinLED 70x20mm 275lm 830 2C 9V LG G2	1010 147 17646	408	97920	150 x 266 x 83
LinLED 140x20mm 550lm 830 2C 18V LG G2	1010 147 17746	204	48960	150 x 266 x 83
LinLED 280x20mm 1100lm 830 2C 36V LG G2	1010 147 17846	204	24480	300 x 266 x 83
LinLED 560x20mm 2200lm 830 2C 72V LG G2	1010 147 17946	204	12240	603 x 266 x 83
LinLED 1120x20mm 4400lm 830 2C+R 144V LG G2	1010 147 18046	204	6120	1198 x 266 x 83
LinLED 1400x20mm 5500lm 830 2C+R 180V LG G2	1010 147 18146	204	6120	1498 x 266 x 83
LinLED 70x20mm 275lm 840 2C 9V LG G2	1010 147 18246	408	97920	150 x 266 x 83
LinLED 140x20mm 550lm 840 2C 18V LG G2	1010 147 18346	204	48960	150 x 266 x 83
LinLED 280x20mm 1100lm 840 2C 36V LG G2	1010 147 18446	204	24480	300 x 266 x 83
LinLED 560x20mm 2200lm 840 2C 72V LG G2	1010 147 18546	204	12240	603 x 266 x 83
LinLED 1120x20mm 4400lm 840 2C+R 144V LG G2	1010 147 18646	204	6120	1198 x 266 x 83
LinLED 1400x20mm 5500lm 840 2C+R 180V LG G2	1010 147 18746	204	6120	1498 x 266 x 83
LinLED 70x20mm 275lm 930 2C 9V S8 K G7	1010 147 18846	408	97920	150 x 266 x 83
LinLED 140x20mm 550lm 930 2C 18V S8 K G7	1010 147 18946	204	48960	150 x 266 x 83
LinLED 280x20mm 1100lm 930 2C 36V S8 K G7	1010 147 19046	204	24480	300 x 266 x 83
LinLED 560x20mm 2200lm 930 2C 72V S8 K G7	1010 147 19146	204	12240	603 x 266 x 83
LinLED 1120x20mm 4400lm 930 2C+R 144V S8 K G7	1010 147 19246	204	6120	1198 x 266 x 83
LinLED 1400x20mm 5500lm 930 2C+R 180V S8 K G7	1010 147 19346	204	6120	1498 x 266 x 83
LinLED 70x20mm 275lm 940 2C 9V S8 K G7	1010 147 19446	408	97920	150 x 266 x 83
LinLED 140x20mm 550lm 940 2C 18V S8 K G7	1010 147 19546	204	48960	150 x 266 x 83
LinLED 280x20mm 1100lm 940 2C 36V S8 K G7	1010 147 19646	204	24480	300 x 266 x 83
LinLED 560x20mm 2200lm 940 2C 72V S8 K G7	1010 147 19746	204	12240	603 x 266 x 83
LinLED 1120x20mm 4400lm 940 2C+R 144V S8 K G7	1010 147 19846	204	6120	1198 x 266 x 83
LinLED 1400x20mm 5500lm 940 2C+R 180V S8 K G7	1010 147 19946	204	6120	1498 x 266 x 83
LinLED 70x20mm 275lm 930 2C 9V S5 K G6	1010 147 20046	408	97920	150 x 266 x 83
LinLED 140x20mm 550lm 930 2C 18V S5 K G6	1010 147 20146	204	48960	150 x 266 x 83
LinLED 280x20mm 1100lm 930 2C 36V S5 K G6	1010 147 20246	204	24480	300 x 266 x 83
LinLED 560x20mm 2200lm 930 2C 72V S5 K G6	1010 147 20346	204	12240	603 x 266 x 83
LinLED 1120x20mm 4400lm 930 2C+R 144V S5 K G6	1010 147 20446	204	6120	1198 x 266 x 83
LinLED 1400x20mm 5500lm 930 2C+R 180V S5 K G6	1010 147 20546	204	6120	1498 x 266 x 83
LinLED 70x20mm 275lm 940 2C 9V S5 K G6	1010 147 20646	408	97920	150 x 266 x 83
LinLED 140x20mm 550lm 940 2C 18V S5 K G6	1010 147 20746	204	48960	150 x 266 x 83
LinLED 280x20mm 1100lm 940 2C 36V S5 K G6	1010 147 20846	204	24480	300 x 266 x 83
LinLED 560x20mm 2200lm 940 2C 72V S5 K G6	1010 147 20946	204	12240	603 x 266 x 83
LinLED 1120x20mm 4400lm 940 2C+R 144V S5 K G6	1010 147 21046	204	6120	1198 x 266 x 83
LinLED 1400x20mm 5500lm 940 2C+R 180V S5 K G6	1010 147 21146	204	6120	1498 x 266 x 83
LinLED 70x20mm 275lm 830 2C 9V Opt G3.1	1010 127 66746	408	97920	150 x 266 x 83
LinLED 140x20mm 550lm 830 2C 18V Opt G3.1	1010 127 66846	204	48960	150 x 266 x 83
LinLED 280x20mm 1100lm 830 2C 36V Opt G3.1	1010 127 66946	204	24480	300 x 266 x 83
LinLED 560x20mm 2200lm 830 2C 72V Opt G3.1	1010 127 67046	204	12240	603 x 266 x 83