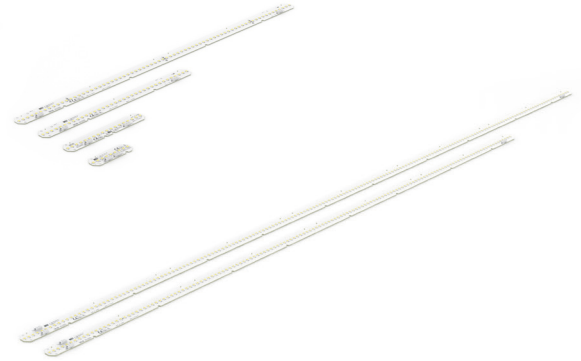


Linear LED modules 1100lm 36V per 1ft 2C

Product description

- Long life-time
- Built-in, constant current LED module
- Re-workable push-in terminals enabling easy connection
- Compliance and approval: CE, ENEC
- 2C - two connectors for series system, also recognized as a high voltage system - non-SELV
- Other CCT and CRI on request



LinLED CRI 80 Optimum G5

Product name	Ordering code	Colour temperature [K]	Current nominal If nom [mA]	Luminous flux ¹ φ [lm]	Useful luminous flux ² [lm]	Voltage ¹ Vf [V]	Power ¹ P [W]	Efficacy ¹ [lm/W]	Current minimum If min ³ [mA]	Current maximum If max [mA]	Energy Efficiency Class	
LinLED 70x20mm 275lm 830 2C 9V Opt G5	1010 127 95946	3000	175	270	277	8.0	1.4	193	30	900	C	
LinLED 140x20mm 550lm 830 2C 18V Opt G5	1010 127 96046		175	539	553	16	2.8	193	30	900	C	
LinLED 280x20mm 1100lm 830 2C 36V Opt G5	1010 127 96146		175	1079	1107	32	5.6	193	30	900	C	
LinLED 560x20mm 2200lm 830 2C 72V Opt G5	1010 127 90146		175	2157	2214	64	11	193	30	900	C	
LinLED 1120x20mm 4400lm 830 2C+R 144V Opt G5	1010 137 00646		175	4314	4427	128	22	193	30	900	C	
LinLED 1400x20mm 5500lm 830 2C+R 180V Opt G5	1010 137 00746		175	5393	5534	160	28	193	30	900	C	
LinLED 70x20mm 275lm 840 2C 9V Opt G5	1010 127 96246		4000	175	288	295	8.0	1.4	206	30	900	B
LinLED 140x20mm 550lm 840 2C 18V Opt G5	1010 127 96346			175	575	590	16	2.8	206	30	900	B
LinLED 280x20mm 1100lm 840 2C 36V Opt G5	1010 127 96446			175	1151	1181	32	5.6	206	30	900	B
LinLED 560x20mm 2200lm 840 2C 72V Opt G5	1010 127 90246			175	2301	2361	64	11	206	30	900	B
LinLED 1120x20mm 4400lm 840 2C+R 144V Opt G5	1010 137 00846	175		4602	4722	128	22	206	30	900	B	
LinLED 1400x20mm 5500lm 840 2C+R 180V Opt G5	1010 137 00946	175		5753	5903	160	28	206	30	900	B	

LinLED CRI 80 Optimum G4

Product name	Ordering code	Colour temperature [K]	Current nominal If nom [mA]	Luminous flux ¹ φ [lm]	Useful luminous flux ² [lm]	Voltage ¹ Vf [V]	Power ¹ P [W]	Efficacy ¹ [lm/W]	Current minimum If min ³ [mA]	Current maximum If max [mA]	Energy Efficiency Class	
LinLED 70x20mm 275lm 830 2C 9V Opt G4	1010 127 92546	3000	175	270	277	8.0	1.4	193	30	900	C	
LinLED 140x20mm 550lm 830 2C 18V Opt G4	1010 127 92646		175	540	554	16	2.8	193	30	900	C	
LinLED 280x20mm 1100lm 830 2C 36V Opt G4	1010 127 92746		175	1080	1107	32	5.6	193	30	900	C	
LinLED 560x20mm 2200lm 830 2C 72V Opt G4	1010 127 92846		175	2159	2214	64	11	193	30	900	C	
LinLED 1120x20mm 4400lm 830 2C+R 144V Opt G4	1010 127 92946		175	4318	4428	128	22	193	30	900	C	
LinLED 1400x20mm 5500lm 830 2C+R 180V Opt G4	1010 127 93046		175	5398	5535	160	28	193	30	900	C	
LinLED 70x20mm 275lm 840 2C 9V Opt G4	1010 127 93146		4000	175	281	288	8.0	1.4	201	30	900	B
LinLED 140x20mm 550lm 840 2C 18V Opt G4	1010 127 93246			175	561	576	16	2.8	201	30	900	B
LinLED 280x20mm 1100lm 840 2C 36V Opt G4	1010 127 93346			175	1123	1151	32	5.6	201	30	900	B
LinLED 560x20mm 2200lm 840 2C 72V Opt G4	1010 127 93446			175	2245	2303	64	11	201	30	900	B
LinLED 1120x20mm 4400lm 840 2C+R 144V Opt G4	1010 127 93546	175		4491	4605	128	22	201	30	900	B	
LinLED 1400x20mm 5500lm 840 2C+R 180V Opt G4	1010 127 93646	175		5614	5757	160	28	201	30	900	B	

LinLED CRI 80 Optimum G3.1

Product name	Ordering code	Colour temperature [K]	Current nominal If nom [mA]	Luminous flux ¹ φ [lm]	Useful luminous flux ² [lm]	Voltage ¹ Vf [V]	Power ¹ P [W]	Efficacy ¹ [lm/W]	Current minimum If min ³ [mA]	Current maximum If max [mA]	Energy Efficiency Class
LinLED 70x20mm 275lm 840 2C 9V Opt G3.1	1010 127 67246	4000	175	278	289	8.2	1.4	193	30	450	B
LinLED 140x20mm 550lm 840 2C 18V Opt G3.1	1010 127 67346		175	557	577	16	2.9	193	30	450	C
LinLED 280x20mm 1100lm 840 2C 36V Opt G3.1	1010 127 67446		175	1114	1154	33	5.8	193	30	450	C
LinLED 560x20mm 2200lm 840 2C 72V Opt G3.1	1010 127 67546		175	2228	2309	66	12	193	30	450	C
LinLED 1120x20mm 4400lm 840 2C+R 144V Opt G3.1	1010 127 77546		175	4455	4618	132	23	193	30	450	C
LinLED 1400x20mm 5500lm 840 2C+R 180V Opt G3.1	1010 127 78546		175	5569	5772	164	29	193	30	450	C

Linear LED modules 1100lm 36V per 1ft 2C

LinLED CRI 90 Optimum G3.1

Product name	Ordering code	Colour temperature [K]	Current nominal If nom [mA]	Luminous flux ¹ ϕ [lm]	Useful luminous flux ² [lm]	Voltage ¹ Vf [V]	Power ¹ P [W]	Efficacy ¹ [lm/W]	Current minimum If min ³ [mA]	Current maximum If max [mA]	Energy Efficiency Class
LinLED 280x20mm 1100lm 930 2C 36V Opt G3.1	1010 127 61546	3000	210	1091	1130	33	7.0	157	30	450	D
LinLED 560x20mm 2200lm 930 2C 72V Opt G3.1	1010 127 61646		210	2182	2261	66	14	157	30	450	D
LinLED 280x20mm 1100lm 940 2C 36V Opt G3.1	1010 127 61746	4000	210	1165	1207	33	7.0	167	30	450	D
LinLED 560x20mm 2200lm 940 2C 72V Opt G3.1	1010 127 61846		210	2329	2414	66	14	167	30	450	D

LinLED CRI 80 Optimum G2

Product name	Ordering code	Colour temperature [K]	Current nominal If nom [mA]	Luminous flux ¹ ϕ [lm]	Useful luminous flux ² [lm]	Voltage ¹ Vf [V]	Power ¹ P [W]	Efficacy ¹ [lm/W]	Current minimum If min ³ [mA]	Current maximum If max [mA]	Energy Efficiency Class
LinLED 70x20mm 275lm 830 2C 9V Opt G2	1010 127 20846	3000	185	271	280	8.3	1.5	176	30	450	C
LinLED 140x20mm 550lm 830 2C 18V Opt G2	1010 117 31246		185	542	560	17	3.1	176	30	450	C
LinLED 280x20mm 1100lm 830 2C 36V Opt G2	1010 117 31646		185	1083	1121	33	6.2	176	30	450	C
LinLED 560x20mm 2200lm 830 2C 72V Opt G2	1010 117 32246		185	2166	2241	67	12	176	30	450	C
LinLED 1120x20mm 4400lm 830 2C+R 144V Opt G2	1010 117 54046		185	4332	4482	133	25	176	30	450	C
LinLED 1400x20mm 5500lm 830 2C+R 180V Opt G2	1010 117 54246		185	5415	5603	167	31	176	30	450	C
LinLED 70x20mm 275lm 840 2C 9V Opt G2	1010 127 20946	4000	185	284	294	8.3	1.5	184	30	450	C
LinLED 140x20mm 550lm 840 2C 18V Opt G2	1010 117 31346		185	569	588	17	3.1	184	30	450	C
LinLED 280x20mm 1100lm 840 2C 36V Opt G2	1010 117 31746		185	1138	1177	33	6.2	184	30	450	C
LinLED 560x20mm 2200lm 840 2C 72V Opt G2	1010 117 32346		185	2275	2354	67	12	184	30	450	C
LinLED 1120x20mm 4400lm 840 2C+R 144V Opt G2	1010 117 54146		185	4551	4708	133	25	184	30	450	C
LinLED 1400x20mm 5500lm 840 2C+R 180V Opt G2	1010 117 54346		185	5688	5885	167	31	184	30	450	C

LinLED CRI 90 Optimum G2

Product name	Ordering code	Colour temperature [K]	Current nominal If nom [mA]	Luminous flux ¹ ϕ [lm]	Useful luminous flux ² [lm]	Voltage ¹ Vf [V]	Power ¹ P [W]	Efficacy ¹ [lm/W]	Current minimum If min ³ [mA]	Current maximum If max [mA]	Energy Efficiency Class
LinLED 70x20mm 275lm 927 2C 9V Opt G2	1010 127 21046	2700	210	252	262	8.5	1.8	141	30	450	E
LinLED 140x20mm 550lm 927 2C 18V Opt G2	1010 117 34146		210	505	523	17	3.6	141	30	450	E
LinLED 280x20mm 1100lm 927 2C 36V Opt G2	1010 117 34446		210	1010	1047	34	7.1	141	30	450	E
LinLED 560x20mm 2200lm 927 2C 72V Opt G2	1010 117 35346		210	2020	2093	68	14	141	30	450	E
LinLED 70x20mm 275lm 930 2C 9V Opt G2	1010 127 21146		210	271	280	8.5	1.8	151	30	450	D
LinLED 140x20mm 550lm 930 2C 18V Opt G2	1010 117 34246		210	541	561	17	3.6	151	30	450	D
LinLED 280x20mm 1100lm 930 2C 36V Opt G2	1010 117 34546	3000	210	1082	1121	34	7.1	151	30	450	D
LinLED 560x20mm 2200lm 930 2C 72V Opt G2	1010 117 35446		210	2164	2243	68	14	151	30	450	D
LinLED 1120x20mm 4400lm 930 2C+R 144V Opt G2	1010 117 96646		210	217	4486	136	29	151	30	450	D
LinLED 70x20mm 275lm 940 2C 9V Opt G2	1010 127 21246		210	280	290	8.5	1.8	156	30	450	D
LinLED 140x20mm 550lm 940 2C 18V Opt G2	1010 117 34346		210	559	579	17	3.6	156	30	450	D
LinLED 280x20mm 1100lm 940 2C 36V Opt G2	1010 117 34646		210	1118	1159	34	7.1	156	30	450	D
LinLED 560x20mm 2200lm 940 2C 72V Opt G2	1010 117 35546	4000	210	2236	2318	68	14	156	30	450	D
LinLED 1120x20mm 4400lm 940 2C+R 144V Opt G2	1010 127 15046		210	4473	4635	136	29	156	30	450	D
LinLED 1400x20mm 5500lm 940 2C+R 180V Opt G2	1010 127 38446		210	5591	5794	170	36	156	30	450	D

LinLED CRI 80 Basic G2

Product name	Ordering code	Colour temperature [K]	Current nominal If nom [mA]	Luminous flux ¹ ϕ [lm]	Useful luminous flux ² [lm]	Voltage ¹ Vf [V]	Power ¹ P [W]	Efficacy ¹ [lm/W]	Current minimum If min ³ [mA]	Current maximum If max [mA]	Energy Efficiency Class
LinLED 70x20mm 275lm 840 2C 9V Bsc G2	1010 127 83746	4000	190	281	292	8.3	1.6	178	30	450	C
LinLED 140x20mm 550lm 840 2C 18V Bsc G2	1010 127 83846		190	561	585	17	3.2	178	30	450	C
LinLED 280x20mm 1100lm 840 2C 36V Bsc G2	1010 127 83946		190	1122	1170	33	6.3	178	30	450	C
LinLED 560x20mm 2200lm 840 2C 72V Bsc G2	1010 127 84046		190	2245	2339	66	13	178	30	450	C
LinLED 1120x20mm 4400lm 840 2C+R 144V Bsc G2	1010 127 83546		190	4489	4678	133	25	178	30	450	C
LinLED 1400x20mm 5500lm 840 2C+R 180V Bsc G2	1010 127 84446		190	5612	5848	166	32	178	30	450	C

Linear LED modules 1100lm 36V per 1ft 2C

LinLED CRI 80 Basic G1

Product name	Ordering code	Colour temperature [K]	Current nominal If nom [mA]	Luminous flux ¹ φ [lm]	Useful luminous flux ² [lm]	Voltage ¹ Vf [V]	Power ¹ P [W]	Efficacy ¹ [lm/W]	Current minimum If min ³ [mA]	Current maximum If max [mA]	Energy Efficiency Class
LinLED 70x20mm 275lm 830 2C 9V Bsc G1	1010 127 20646	3000	210	275	284	8.5	1.8	154	30	450	D
LinLED 140x20mm 550lm 830 2C 18V Bsc G1	1010 117 36646		210	549	568	17	3.6	154	30	450	D
LinLED 280x20mm 1100lm 830 2C 36V Bsc G1	1010 117 37046		210	1099	1137	34	7.1	154	30	450	D
LinLED 560x20mm 2200lm 830 2C 72V Bsc G1	1010 117 37646		210	2197	2273	68	14	154	30	450	D
LinLED 1120x20mm 4400lm 830 2C+R 144V Bsc G1	1010 117 54446		210	4395	4547	136	29	154	30	450	D
LinLED 1400x20mm 5500lm 830 2C+R 180V Bsc G1	1010 117 54646		210	5493	5684	169	36	154	30	450	D

¹At nominal current and T_p

²At nominal current and 25°C

³It is recommended not to operate below minimum current in order to avoid un-even brightness

Tolerance range for optical and electrical ±10%

Temperature & humidity

Specification item	Unit	Value
T _p	[°C]	45
T _{p rated}	[°C]	65
T _c	[°C]	85
Relative humidity (non-condensing)	[%]	5 ... 85
Storage ambient temperature	[°C]	-25 ... +85
Storage relative humidity (non-condensing)	[%]	5 ... 85

T_p - Temperature related to the performance parameters of the LED modules

T_{p rated} - Maximum operating temperature to which the rated performance characteristics are declared

T_c - Highest permissible value for safe operation

Technical data

Specification item	Unit	Value
Classification acc. to IEC 62031		built-in
Working voltage	[Vdc]	350
Beam angle	[deg]	120
Initial color consistency	[SDCM]	3
Photobiological safety		RG1 unlimited

Color coordinates

According to CIE 1931

Specification item	CIEx	CIEy
2700K	0.4578	0.4101
3000K	0.4338	0.4030
4000K	0.3818	0.3797
6500K	0.3123	0.3282

Certificates & standards

Specification item	Compliant
ENEC	Yes
CE	Yes
RoHS	Yes
REACH	Yes
IP rating	No IP rating

Linear LED modules 1100lm 36V per 1ft 2C

Lumen maintenance

LinLED CRI 80

for LinLED CRI 80 Optimum G3.1 & G2 & 80 Basic G1

Forward current	Tp temp.	L70 [h]		L80 [h]		L90 [h]	
		B50	B10	B50	B10	B50	B10
If nom	45°C	>100 000	>100 000	>100 000	>100 000	71 000	61 000
	55°C	>100 000	>100 000	>100 000	>100 000	71 000	61 000
	65°C	>100 000	>100 000	>100 000	>100 000	69 000	60 000
	75°C	>100 000	>100 000	>100 000	>100 000	68 000	59 000
	85°C	>100 000	>100 000	>100 000	>100 000	67 000	58 000
If max	45°C	>100 000	>100 000	>100 000	>100 000	51 000	39 000
	55°C	>100 000	>100 000	>100 000	>100 000	51 000	39 000
	65°C	>100 000	>100 000	>100 000	>100 000	48 000	37 000
	75°C	>100 000	>100 000	>100 000	>100 000	45 000	35 000
	85°C	>100 000	>100 000	>100 000	69 000	43 000	34 000

calculated data based on LM80 LED data (@65mA 17000h / @160mA & 200mA 12000h)

LinLED CRI 80

for LinLED CRI 80 Optimum G4 & G5

Forward current	Tp temp.	L70 [h]		L80 [h]		L90 [h]	
		B50	B10	B50	B10	B50	B10
If nom	45°C	>102 000	>102 000	>102 000	>102,000	>102 000	>102 000
	55°C	>102 000	>102 000	>102 000	>102 000	>102 000	>102 000
	65°C	>102 000	>102 000	>102 000	>102 000	89 000	88 000
	75°C	>102 000	>102 000	>102 000	>102 000	75 000	75 000
	85°C	>102 000	>102 000	>102 000	>102 000	64 000	63 000
If max	45°C	>102 000	>102 000	>102 000	>102 000	>102 000	>102 000
	55°C	>102 000	>102 000	>102 000	>102 000	90 000	89 000
	65°C	>102 000	>102 000	>102 000	>102 000	77 000	76 000
	75°C	>102 000	>102 000	>102 000	>102 000	65 000	64 000
	85°C	>102 000	>102 000	>102 000	>102 000	55 000	54 000

calculated data based on LM80 LED data 12000h

LinLED CRI 90

for LinLED CRI 90 Optimum G2

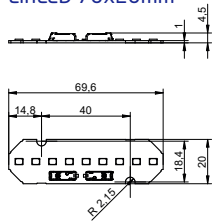
Forward current	Tp temp.	L70 [h]		L80 [h]		L90 [h]	
		B50	B10	B50	B10	B50	B10
If nom	45°C	>100 000	>100 000	>100 000	>100 000	65 000	>60 000
	55°C	>100 000	>100 000	>100 000	>100 000	52 000	51 000
	65°C	>100 000	>100 000	85 000	79 000	41 000	36 000
If max	45°C	82 000	69 000	52 000	49 000	29 000	28 000
	55°C	73 000	63 000	47 000	44 000	25 000	24 000
	65°C	64 000	58 000	41 000	38 000	22 000	19 000

calculated data based on LM80 LED data 10 000h

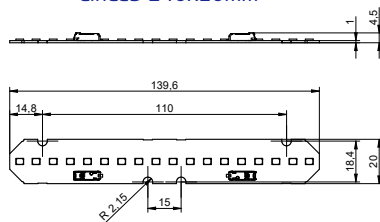
Linear LED modules 1100lm 36V per 1ft 2C

Dimensions

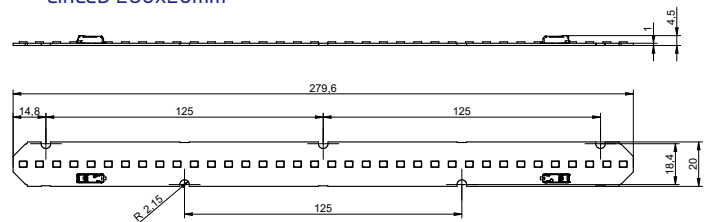
LinLED 70x20mm



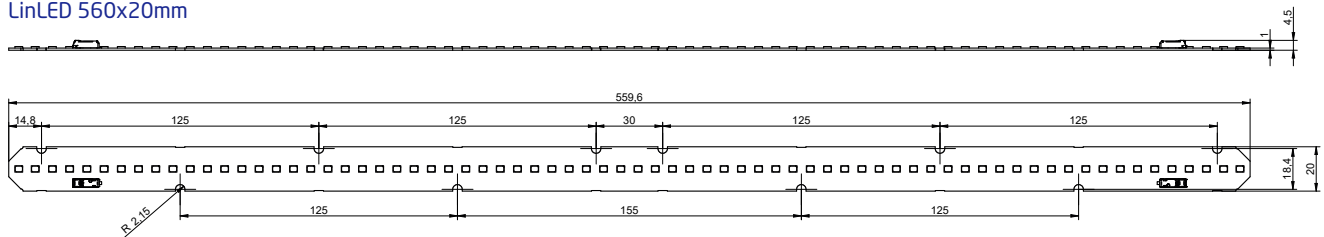
LinLED 140x20mm



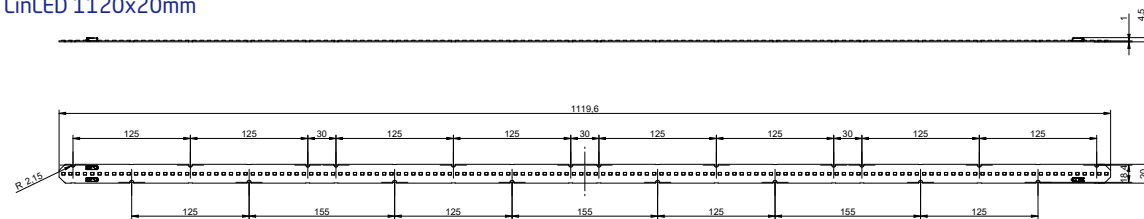
LinLED 280x20mm



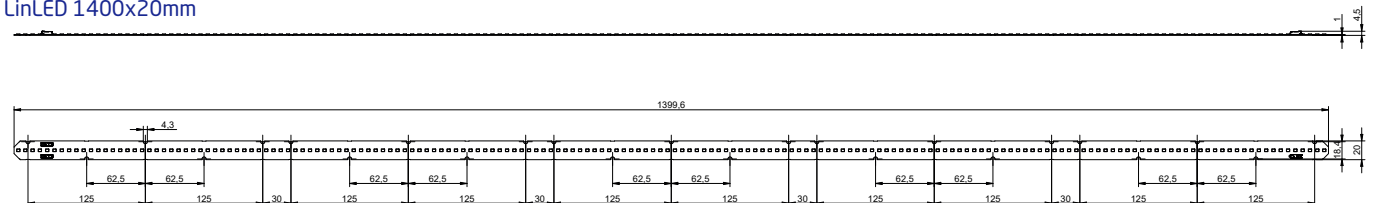
LinLED 560x20mm



LinLED 1120x20mm



LinLED 1400x20mm



Mounting

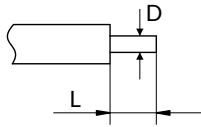
LED Modules cannot be exposed to tensile or compressive stresses. For this purpose it is necessary that the modules are assembled to a flat surface by only rounded head screws. Additionally plastic flat washer should be used to ensure creepage distance between screw's head and surface of the pcb. Max. torque for fixing: 0,5Nm.

LED modules are sensitive to electrostatic discharge (ESD). Follow safety regulations according to IEC 61340-5-1.

Linear LED modules 1100lm 36V per 1ft 2C

Wiring

Wire cross section and strip length:



D - wire cross section (solid and flexible wires)	Min	Max
	0.2mm ²	0.75mm ²
	AWG 24	AWG 18

L - strip length	Min	Max
	8mm	9mm

Opening for the release of wires from the top with release pin Electroterminal art. 881 167 884:

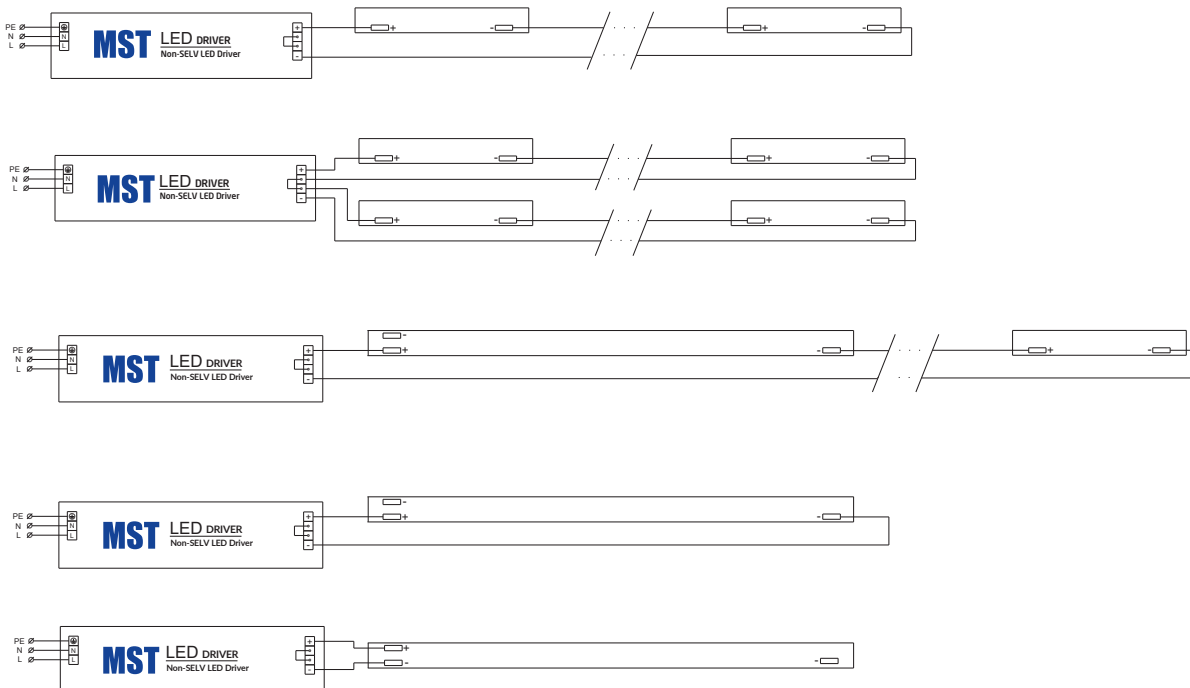


Connections

Max number of modules	Unit	Series	Parallel
LinLED 70x20mm	[pcs]	36	-
LinLED 140x20mm	[pcs]	18	-
LinLED 280x20mm	[pcs]	9	-
LinLED 560x20mm	[pcs]	4	-
LinLED 1120x20mm	[pcs]	2	-
LinLED 1400x20mm	[pcs]	1	-

You can combine different lengths of LED modules so that the maximum length does not exceed 2520mm

Wiring for series connection system (2C)



Linear LED modules 1100lm 36V per 1ft 2C

Energy Label / EPREL database

To obtain Energy Label for this product visit <https://eprel.ec.europa.eu/> and enter model identifier

Model identifier consists of 10 digits XXXX XXX XXX. It is printed directly on the LED module or on product label. This is the number you can see in EPREL database.

Ordering code consist of 12 digits XXXX XXX XXX46. Additional last two digits means packaging of the product.

Ordering codes

Product name	Ordering code	Pieces per box	Pieces per pallet	Box dimensions [mm]
LinLED 70x20mm 275lm 830 2C 9V Opt G5	1010 127 95946	384	92160	150 x 266 x 83
LinLED 140x20mm 550lm 830 2C 18V Opt G5	1010 127 96046	154	29260	248 x 175 x 66
LinLED 280x20mm 1100lm 830 2C 36V Opt G5	1010 127 96146	204	24480	300 x 266 x 83
LinLED 560x20mm 2200lm 830 2C 72V Opt G5	1010 127 90146	204	12240	603 x 266 x 83
LinLED 1120x20mm 4400lm 830 2C+R 144V Opt G5	1010 137 00646	204	6120	1198 x 266 x 83
LinLED 1400x20mm 5500lm 830 2C+R 180V Opt G5	1010 137 00746	192	5760	1498 x 266 x 83
LinLED 70x20mm 275lm 840 2C 9V Opt G5	1010 127 96246	384	92160	150 x 266 x 83
LinLED 140x20mm 550lm 840 2C 18V Opt G5	1010 127 96346	154	29260	248 x 175 x 66
LinLED 280x20mm 1100lm 840 2C 36V Opt G5	1010 127 96446	204	24480	300 x 266 x 83
LinLED 560x20mm 2200lm 840 2C 72V Opt G5	1010 127 90246	204	12240	603 x 266 x 83
LinLED 1120x20mm 4400lm 840 2C+R 144V Opt G5	1010 137 00846	204	6120	1198 x 266 x 83
LinLED 1400x20mm 5500lm 840 2C+R 180V Opt G5	1010 137 00946	192	5760	1498 x 266 x 83
LinLED 70x20mm 275lm 830 2C 9V Opt G4	1010 127 92546	384	92160	150 x 266 x 83
LinLED 140x20mm 550lm 830 2C 18V Opt G4	1010 127 92646	154	29260	248 x 175 x 66
LinLED 280x20mm 1100lm 830 2C 36V Opt G4	1010 127 92746	204	24480	300 x 266 x 83
LinLED 560x20mm 2200lm 830 2C 72V Opt G4	1010 127 92846	204	12240	603 x 266 x 83
LinLED 1120x20mm 4400lm 830 2C+R 144V Opt G4	1010 127 92946	204	6120	1198 x 266 x 83
LinLED 1400x20mm 5500lm 830 2C+R 180V Opt G4	1010 127 93046	192	5760	1498 x 266 x 83
LinLED 70x20mm 275lm 840 2C 9V Opt G4	1010 127 93146	384	92160	150 x 266 x 83
LinLED 140x20mm 550lm 840 2C 18V Opt G4	1010 127 93246	154	29260	248 x 175 x 66
LinLED 280x20mm 1100lm 840 2C 36V Opt G4	1010 127 93346	204	24480	300 x 266 x 83
LinLED 560x20mm 2200lm 840 2C 72V Opt G4	1010 127 93446	204	12240	603 x 266 x 83
LinLED 1120x20mm 4400lm 840 2C+R 144V Opt G4	1010 127 93546	204	6120	1198 x 266 x 83
LinLED 1400x20mm 5500lm 840 2C+R 180V Opt G4	1010 127 93646	192	5760	1498 x 266 x 83
LinLED 70x20mm 275lm 840 2C 9V Opt G3.1	1010 127 67246	384	92160	150 x 266 x 83
LinLED 140x20mm 550lm 840 2C 18V Opt G3.1	1010 127 67346	154	29260	248 x 175 x 66
LinLED 280x20mm 1100lm 840 2C 36V Opt G3.1	1010 127 67446	204	24480	300 x 266 x 83
LinLED 560x20mm 2200lm 840 2C 72V Opt G3.1	1010 127 67546	204	12240	603 x 266 x 83
LinLED 1120x20mm 4400lm 840 2C+R 144V Opt G3.1	1010 127 77546	204	6120	1198 x 266 x 83
LinLED 1400x20mm 5500lm 840 2C+R 180V Opt G3.1	1010 127 78546	192	5760	1498 x 266 x 83
LinLED 280x20mm 1100lm 930 2C 36V Opt G3.1	1010 127 61546	204	24480	300 x 266 x 83
LinLED 560x20mm 2200lm 930 2C 72V Opt G3.1	1010 127 61646	204	12240	603 x 266 x 83
LinLED 280x20mm 1100lm 940 2C 36V Opt G3.1	1010 127 61746	204	24480	300 x 266 x 83
LinLED 560x20mm 2200lm 940 2C 72V Opt G3.1	1010 127 61846	204	12240	603 x 266 x 83
LinLED 70x20mm 275lm 830 2C 9V Opt G2	1010 127 20846	384	92160	150 x 266 x 83
LinLED 140x20mm 550lm 830 2C 18V Opt G2	1010 117 31246	154	29260	248 x 175 x 66
LinLED 280x20mm 1100lm 830 2C 36V Opt G2	1010 117 31646	204	24480	300 x 266 x 83
LinLED 560x20mm 2200lm 830 2C 72V Opt G2	1010 117 32246	204	12240	603 x 266 x 83
LinLED 1120x20mm 4400lm 830 2C+R 144V Opt G2	1010 117 54046	204	6120	1198 x 266 x 83
LinLED 1400x20mm 5500lm 830 2C+R 180V Opt G2	1010 117 54246	192	5760	1498 x 266 x 83
LinLED 70x20mm 275lm 840 2C 9V Opt G2	1010 127 20946	384	92160	150 x 266 x 83
LinLED 140x20mm 550lm 840 2C 18V Opt G2	1010 117 31346	154	29260	248 x 175 x 66
LinLED 280x20mm 1100lm 840 2C 36V Opt G2	1010 117 31746	204	24480	300 x 266 x 83
LinLED 560x20mm 2200lm 840 2C 72V Opt G2	1010 117 32346	204	12240	603 x 266 x 83
LinLED 1120x20mm 4400lm 840 2C+R 144V Opt G2	1010 117 54146	204	6120	1198 x 266 x 83
LinLED 1400x20mm 5500lm 840 2C+R 180V Opt G2	1010 117 54346	192	5760	1498 x 266 x 83
LinLED 70x20mm 275lm 927 2C 9V Opt G2	1010 127 21046	384	92160	150 x 266 x 83
LinLED 140x20mm 550lm 927 2C 18V Opt G2	1010 117 34146	154	29260	248 x 175 x 66
LinLED 280x20mm 1100lm 927 2C 36V Opt G2	1010 117 34446	204	24480	300 x 266 x 83
LinLED 560x20mm 2200lm 927 2C 72V Opt G2	1010 117 35346	204	12240	603 x 266 x 83
LinLED 70x20mm 275lm 930 2C 9V Opt G2	1010 127 21146	384	92160	150 x 266 x 83
LinLED 140x20mm 550lm 930 2C 18V Opt G2	1010 117 34246	154	29260	248 x 175 x 66
LinLED 280x20mm 1100lm 930 2C 36V Opt G2	1010 117 34546	204	24480	300 x 266 x 83
LinLED 560x20mm 2200lm 930 2C 72V Opt G2	1010 117 35446	204	12240	603 x 266 x 83
LinLED 1120x20mm 4400lm 930 2C+R 144V Opt G2	1010 117 96646	204	6120	1198 x 266 x 83
LinLED 70x20mm 275lm 940 2C 9V Opt G2	1010 127 21246	384	92160	150 x 266 x 83
LinLED 140x20mm 550lm 940 2C 18V Opt G2	1010 117 34346	154	29260	248 x 175 x 66
LinLED 280x20mm 1100lm 940 2C 36V Opt G2	1010 117 34646	204	24480	300 x 266 x 83
LinLED 560x20mm 2200lm 940 2C 72V Opt G2	1010 117 35546	204	12240	603 x 266 x 83
LinLED 1120x20mm 4400lm 940 2C+R 144V Opt G2	1010 127 15046	204	6120	1198 x 266 x 83
LinLED 1400x20mm 5500lm 940 2C+R 180V Opt G2	1010 127 38446	192	5760	1498 x 266 x 83
LinLED 70x20mm 275lm 840 2C 9V Bsc G2	1010 127 83746	384	92160	150 x 266 x 83
LinLED 140x20mm 550lm 840 2C 18V Bsc G2	1010 127 83846	154	29260	248 x 175 x 66
LinLED 280x20mm 1100lm 840 2C 36V Bsc G2	1010 127 83946	204	24480	300 x 266 x 83

Linear LED modules 1100lm 36V per 1ft 2C

Product name	Ordering code	Pieces per box	Pieces per pallet	Box dimensions [mm]
LinLED 560x20mm 2200lm 840 2C 72V Bsc G2	1010 127 84046	204	12240	603 x 266 x 83
LinLED 1120x20mm 4400lm 840 2C+R 144V Bsc G2	1010 127 83546	204	6120	1198 x 266 x 83
LinLED 1400x20mm 5500lm 840 2C+R 180V Bsc G2	1010 127 84446	192	5760	1498 x 266 x 83
LinLED 70x20mm 275lm 830 2C 9V Bsc G1	1010 127 20646	384	92160	150 x 266 x 83
LinLED 140x20mm 550lm 830 2C 18V Bsc G1	1010 117 36646	154	29260	248 x 175 x 66
LinLED 280x20mm 1100lm 830 2C 36V Bsc G1	1010 117 37046	204	24480	300 x 266 x 83
LinLED 560x20mm 1100lm 830 2C 72V Bsc G1	1010 117 37646	204	12240	603 x 266 x 83
LinLED 1120x20mm 4400lm 830 2C+R 144V Bsc G1	1010 117 54446	204	6120	1198 x 266 x 83
LinLED 1400x20mm 5500lm 830 2C+R 180V Bsc G1	1010 117 54646	192	5760	1498 x 266 x 83