

Linear LED modules 1100lm per 1ft 4C

Product description

- Long life-time
- Built-in, constant current LED module
- Re-workable push-in terminals enabling easy connection
- Compliance and approval: CE, ENEC
- 4C - four connectors for parallel system, also recognized as a low voltage system - SELV
- Other CCT and CRI on request



LinLED CRI 80 CN G3

Product name	Ordering code	Colour temperature [K]	Current nominal If nom [mA]	Luminous flux ¹ φ [lm]	Useful luminous flux ² [lm]	Voltage ¹ Vf [V]	Power ¹ P [W]	Efficacy ¹ [lm/W]	Current minimum If min ³ [mA]	Current maximum If max [mA]	Energy Efficiency Class
LinLED 280x20mm 1100lm 830 4C 36V CN G3	1010 147 09846	3000	185	1091	1129	32	6.0	182	30	450	C
LinLED 560x20mm 2200lm 830 4C 36V CN G3	1010 147 09946		370	2183	2259	32	12	182	60	900	C
LinLED 280x20mm 1100lm 840 4C 36V CN G3	1010 147 10046	4000	185	1151	1192	32	6.0	192	30	450	C
LinLED 560x20mm 2200lm 840 4C 36V CN G3	1010 147 10146		370	2303	2383	32	12	192	60	900	C

LinLED CRI 90 EH1.1 G3

Product name	Ordering code	Colour temperature [K]	Current nominal If nom [mA]	Luminous flux ¹ φ [lm]	Useful luminous flux ² [lm]	Voltage ¹ Vf [V]	Power ¹ P [W]	Efficacy ¹ [lm/W]	Current minimum If min ³ [mA]	Current maximum If max [mA]	Energy Efficiency Class
LinLED 280x20mm 1100lm 927 4C 36V EH1.1 G3	1010 117 69946	2700	195	1079	1111	34	6.6	163	30	450	D
LinLED 560x20mm 2200lm 927 4C 36V EH1.1 G3	1010 117 70046		390	2157	2222	34	13	163	60	900	D
LinLED 280x20mm 1100lm 930 4C 36V EH1.1 G3	1010 117 40146	3000	195	1079	1111	34	6.6	163	30	450	D
LinLED 560x20mm 2200lm 930 4C 36V EH1.1 G3	1010 117 40746		390	2157	2222	34	13	163	60	900	D
LinLED 280x20mm 1100lm 940 4C 36V EH1.1 G3	1010 117 40246	4000	195	1146	1181	34	6.6	173	30	450	C
LinLED 560x20mm 2200lm 940 4C 36V EH1.1 G3	1010 117 40846		390	2292	2361	34	13	173	60	900	C

¹At nominal current and T_p

²At nominal current and 25°C

³It is recommended not to operate below minimum current in order to avoid un-even brightness

Tolerance range for optical and electrical ±10%

Temperature & humidity

Specification item	Unit	Value
T _p	[°C]	45
T _p rated	[°C]	65
T _c	[°C]	85
Relative humidity (non-condensing)	[%]	5 ... 85
Storage ambient temperature	[°C]	-25 ... +85
Storage relative humidity (non-condensing)	[%]	5 ... 85

T_p - Temperature related to the performance parameters of the LED modules

T_p rated - Maximum operating temperature to which the rated performance characteristics are declared

T_c - Highest permissible value for safe operation

Technical data

Specification item	Unit	Value
Classification acc. to IEC 62031		built-in
Working voltage	[Vdc]	60
Beam angle	[deg]	120
Initial color consistency	[SDCM]	3
Photobiological safety		RG1 unlimited

Linear LED modules 1100lm per 1ft 4C

Color coordinates

According to CIE 1931

Specification item	CIE _x	CIE _y
2700K	0.4578	0.4101
3000K	0.4338	0.4030
4000K	0.3818	0.3797
6500K	0.3123	0.3282

Certificates & standards

Specification item	Compliant
ENEC	Yes
CE	Yes
RoHS	Yes
REACH	Yes
IP rating	No IP rating

Lumen maintenance

for CJ G4, CN G3

Forward current	T _p temp.	L70 [h]		L80 [h]		L90 [h]	
		B50	B10	B50	B10	B50	B10
If nom	45°C	>102 000	>102 000	>102 000	>102 000	>102 000	>102 000
	55°C	>102 000	>102 000	>102 000	>102 000	>102 000	>102 000
	65°C	>102 000	>102 000	>102 000	>102 000	89 000	88 000
	75°C	>102 000	>102 000	>102 000	>102 000	75 000	74 000
If max	85°C	>102 000	>102 000	>102 000	>102 000	64 000	63 000
	45°C	>102 000	>102 000	>102 000	>102 000	>102 000	>102 000
	55°C	>102 000	>102 000	>102 000	>102 000	100000	99000
	65°C	>102 000	>102 000	>102 000	>102 000	85 000	84 000
	75°C	>102 000	>102 000	>102 000	>102 000	71 000	70 000
	85°C	>102 000	>102 000	>102 000	>102 000	61 000	60 000

Reported data based on LM80 LED data (17 000h)

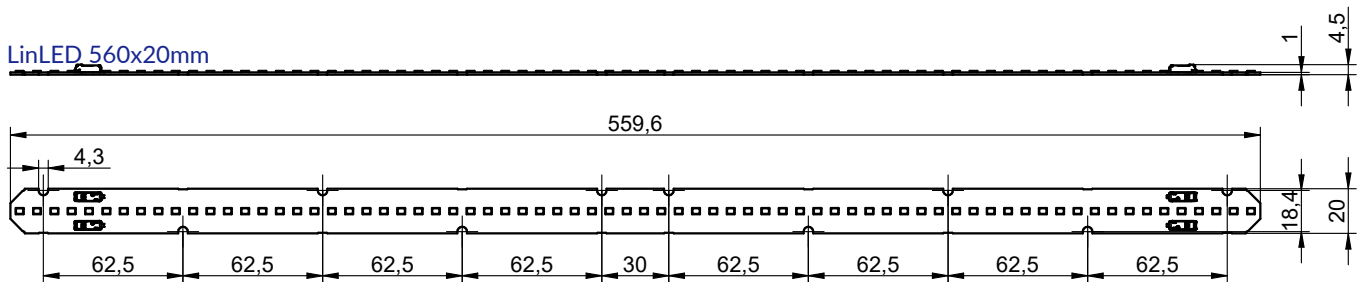
for EH1.1 G3

Forward current	T _p temp.	L70 [h]		L80 [h]		L90 [h]	
		B50	B10	B50	B10	B50	B10
If nom	45°C	>72 000	>72 000	>72 000	>72 000	>72 000	>72 000
	55°C	>72 000	>72 000	>72 000	>72 000	>72 000	>72 000
	65°C	>72 000	>72 000	>72 000	>72 000	>72 000	>72 000
	75°C	>72 000	>72 000	>72 000	>72 000	>72 000	>72 000
If max	85°C	>72 000	>72 000	>72 000	>72 000	>72 000	>72 000
	45°C	>72 000	>72 000	67 000	62 000	30 000	29 000
	55°C	>72 000	>72 000	66 000	61 000	30 000	28 000
	65°C	>72 000	>72 000	65 000	60 000	29 000	27 000
	75°C	>72 000	>72 000	65 000	59 000	29 000	26 000
	85°C	>72 000	>72 000	64 000	58 000	28 000	26 000

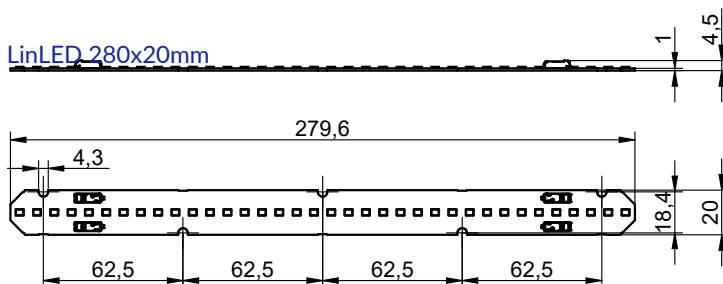
Calculated data based on LM80 LED data (12 000h)

Dimensions

LinLED_560x20mm



LinLED_280x20mm



Linear LED modules 1100lm per 1ft 4C

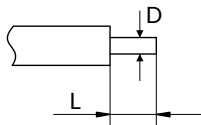
Mounting

LED Modules cannot be exposed to tensile or compressive stresses. For this purpose it is necessary that the modules are assembled to a flat surface by only rounded head screws. Additionally plastic flat washer should be used to ensure creepeage distance between screw's head and surface of the pcb. Max. torque for fixing: 0,5Nm.

LED modules are sensitive to electrostatic discharge (ESD). Follow safety regulations according to IEC 61340-5-1. Protection against electric shock must be provided by the luminaire's enclosure.

Wiring

Wire cross section and strip length:



D - wire cross section (solid and flexible wires)	Min	Max
	0.2mm ²	0.75mm ²
	AWG 24	AWG 18

L - strip length	Min	Max
	8mm	9mm

Opening for the release of wires from the top with release pin Electroterminal art. 881 167 884:

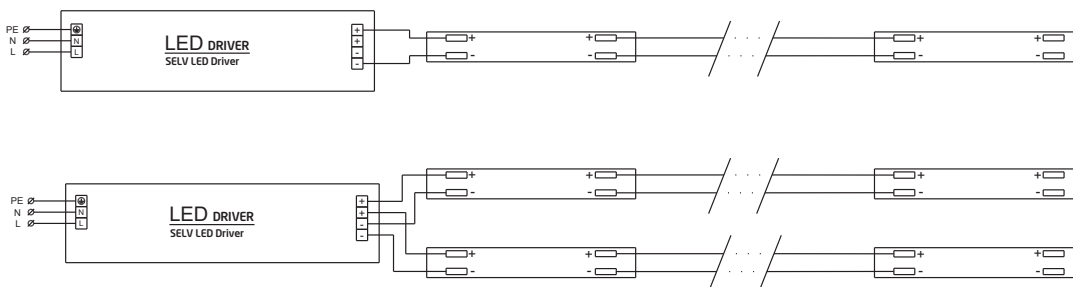


Connections

Max number of modules	Unit	Series	Parallel
LinLED 280x20mm	[pcs]	-	8
LinLED 560x20mm	[pcs]	-	4

You can combine different lengths of LED modules so that the maximum length does not exceed 2240mm

Wiring for parallel connection system (4C)



To prevent irregular luminous intensity in parallel connection use only LED modules from the same V-code group. V-code (e.g. "A", "B", "AB") is printed on the LED module and box label. Naming is not adequate to efficacy or luminous flux.

Energy Label / EPREL database

To obtain Energy Label for this product visit <https://eprel.ec.europa.eu/> and enter model identifier

Model identifier consists of 10 digits XXXX XXX XXX. It is printed directly on the LED module or on product label. This is the number you can see in EPREL database.

Ordering code consist of 12 digits XXXX XXX XXX46. Additional last two digits means packaging of the product.

Linear LED modules 1100lm per 1ft 4C

Ordering codes

Product name	Ordering code	Pieces per box	Pieces per pallet	Box dimensions [mm]
LinLED 280x20mm 1100lm 830 4C 36V CN G3	1010 147 09846	192	23040	300 x 266 x 83
LinLED 560x20mm 2200lm 830 4C 36V CN G3	1010 147 09946	192	11520	603 x 266 x 83
LinLED 280x20mm 1100lm 840 4C 36V CN G3	1010 147 10046	192	23040	300 x 266 x 83
LinLED 560x20mm 2200lm 840 4C 36V CN G3	1010 147 10146	192	11520	603 x 266 x 83
LinLED 280x20mm 1100lm 927 4C 36V EH1.1 G3	1010 117 69946	192	23040	300 x 266 x 83
LinLED 560x20mm 2200lm 927 4C 36V EH1.1 G3	1010 117 70046	192	11520	603 x 266 x 83
LinLED 280x20mm 1100lm 930 4C 36V EH1.1 G3	1010 117 40146	192	23040	300 x 266 x 83
LinLED 560x20mm 2200lm 930 4C 36V EH1.1 G3	1010 117 40746	192	11520	603 x 266 x 83
LinLED 280x20mm 1100lm 940 4C 36V EH1.1 G3	1010 117 40246	192	23040	300 x 266 x 83
LinLED 560x20mm 2200lm 940 4C 36V EH1.1 G3	1010 117 40846	192	11520	603 x 266 x 83