

Linear LED modules 2000lm per 1ft 4C

Product description

- Long life-time
- Built-in, constant current LED module
- Re-workable push-in terminals enabling easy connection
- Compliance and approval: CE, ENEC
- 4C - four connectors for parallel system, also recognized as a low voltage system - SELV
- Other CCT and CRI on request



LinLED CRI 80 CN G3

Product name	Ordering code	Colour temperature [K]	Current nominal If nom [mA]	Luminous flux ¹ φ [lm]	Useful luminous flux ² [lm]	Voltage ¹ Vf [V]	Power ¹ P [W]	Efficacy ¹ [lm/W]	Current minimum If min ³ [mA]	Current maximum If max [mA]	Energy Efficiency Class
LinLED 70x24mm 500lm 830 4C 42V CN G3	1010 147 51946	3000	70	480	496	38	2.7	180	10	150	C
LinLED 140x24mm 1000lm 830 4C 42V CN G3	1010 147 52046		140	959	993	38	5.3	180	20	300	C
LinLED 280x24mm 2000lm 830 4C 42V CN G3	1010 147 52146		280	1918	1985	38	10.6	180	40	600	C
LinLED 560x24mm 4000lm 830 4C 42V CN G3	1010 147 52246		560	3837	3971	38	21.3	180	80	1200	C
LinLED 70x24mm 500lm 840 4C 42V CN G3	1010 147 52346	4000	70	506	524	38	2.7	190	10	150	C
LinLED 140x24mm 1000lm 840 4C 42V CN G3	1010 147 52446		140	1012	1047	38	5.3	190	20	300	C
LinLED 280x24mm 2000lm 840 4C 42V CN G3	1010 147 52546		280	2024	2094	38	10.6	190	40	600	C
LinLED 560x24mm 4000lm 840 4C 42V CN G3	1010 147 52646		560	4048	4189	38	21.3	190	80	1200	C

¹At nominal current and T_p

²At nominal current and 25°C

³It is recommended not to operate below minimum current in order to avoid un-even brightness
Tolerance range for optical and electrical ±10%

Temperature & humidity

Specification item	Unit	Value
T _p	[°C]	45
T _p rated	[°C]	65
T _c	[°C]	85
Relative humidity (non-condensing)	[%]	5 ... 85
Storage ambient temperature	[°C]	-25 ... +85
Storage relative humidity (non-condensing)	[%]	5 ... 85

T_p - Temperature related to the performance parameters of the LED modules

T_p rated - Maximum operating temperature to which the rated performance characteristics are declared

T_c - Highest permissible value for safe operation

Technical data

Specification item	Unit	Value
Classification acc. to IEC 62031		built-in
Working voltage	[Vdc]	60
Beam angle	[deg]	120
Initial color consistency	[SDCM]	3
Photobiological safety		RG1 unlimited

Linear LED modules 2000lm per 1ft 4C

Color coordinates

According to CIE 1931

Specification item	CIE _x	CIE _y
2700K	0.4578	0.4101
3000K	0.4338	0.4030
4000K	0.3818	0.3797
6500K	0.3123	0.3282

Certificates & standards

Specification item	Compliant
ENEC	Yes
CE	Yes
RoHS	Yes
REACH	Yes
IP rating	No IP rating

Lumen maintenance

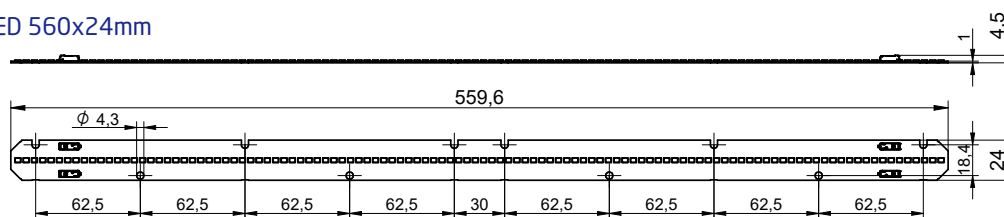
for CJ G4, CN G3

Forward current	T _p temp.	L70 [h]		L80 [h]		L90 [h]	
		B50	B10	B50	B10	B50	B10
If nom	45°C	>102 000	>102 000	>102 000	>102 000	>102 000	>102 000
	55°C	>102 000	>102 000	>102 000	>102 000	>102 000	>102 000
	65°C	>102 000	>102 000	>102 000	>102 000	87 000	86 000
	75°C	>102 000	>102 000	>102 000	>102 000	74 000	73 000
	85°C	>102 000	>102 000	>102 000	>102 000	63 000	62 000
If max	45°C	>102 000	>102 000	>102 000	>102 000	>102 000	>102 000
	55°C	>102 000	>102 000	>102 000	>102 000	100000	99000
	65°C	>102 000	>102 000	>102 000	>102 000	85 000	84 000
	75°C	>102 000	>102 000	>102 000	>102 000	71 000	70 000
	85°C	>102 000	>102 000	>102 000	>102 000	61 000	60 000

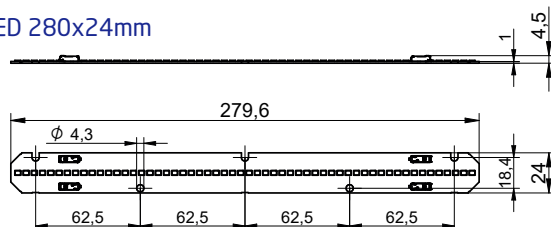
Reported data based on LM80 LED data (1.7 000h)

Dimensions

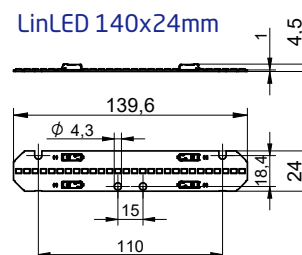
LinLED 560x24mm



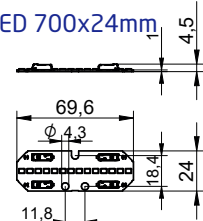
LinLED 280x24mm



LinLED 140x24mm



LinLED 700x24mm



Mounting

LED Modules cannot be exposed to tensile or compressive stresses. For this purpose it is necessary that the modules are assembled to a flat surface by only rounded head screws. Additionally plastic flat washer should be used to ensure creepeage distance between screw's head and surface of the pcb. Max. torque for fixing: 0,5Nm.

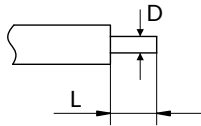
LED modules are sensitive to electrostatic discharge (ESD). Follow safety regulations according to IEC 61340-5-1.

Protection against electric shock must be provided by the luminaire's enclosure.

Linear LED modules 2000lm per 1ft 4C

Wiring

Wire cross section and strip length:



D - wire cross section (solid and flexible wires)	Min	Max
	0.2mm ²	0.75mm ²
	AWG 24	AWG 18

L - strip length	Min	Max
	8mm	9mm

Opening for the release of wires from the top with release pin Electroterminal art. 881 167 884:

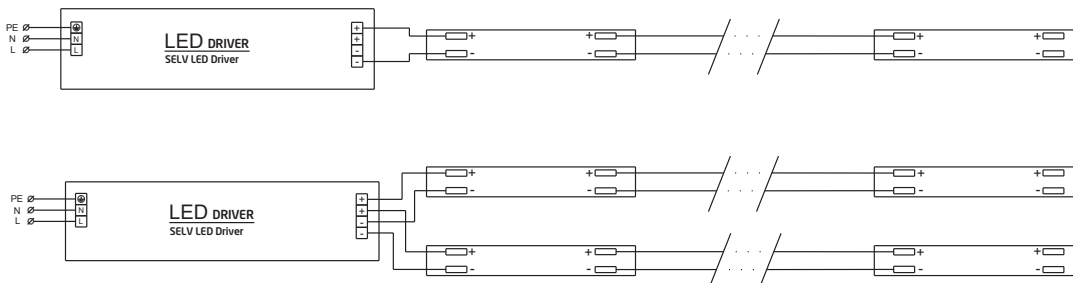


Connections

Max number of modules	Unit	Series	Parallel
LinLED 70x24mm	[pcs]	-	32
LinLED 140x24mm	[pcs]	-	16
LinLED 280x24mm	[pcs]	-	8
LinLED 560x24mm	[pcs]	-	4

You can combine different lengths of LED modules so that the maximum length does not exceed 2240mm

Wiring for parallel connection system (4C)



To prevent irregular luminous intensity in parallel connection use only LED modules from the same V-code group.

V-code (e.g. "A", "B", "AB") is printed on the LED module and box label. Naming is not adequate to efficacy or luminous flux.

Ordering codes

Product name	Ordering code	Pieces per box	Pieces per pallet	Box dimensions [mm]
LinLED 70x24mm 500lm 830 4C 42V CN G3	1010 147 51946	320	76800	150 x 266 x 83
LinLED 140x24mm 1000lm 830 4C 42V CN G3	1010 147 52046	160	38400	150 x 266 x 83
LinLED 280x24mm 2000lm 830 4C 42V CN G3	1010 147 52146	160	19200	300 x 266 x 83
LinLED 560x24mm 4000lm 830 4C 42V CN G3	1010 147 52246	160	9600	603 x 266 x 83
LinLED 70x24mm 500lm 840 4C 42V CN G3	1010 147 52346	320	76800	150 x 266 x 83
LinLED 140x24mm 1000lm 840 4C 42V CN G3	1010 147 52446	160	38400	150 x 266 x 83
LinLED 280x24mm 2000lm 840 4C 42V CN G3	1010 147 52546	160	19200	300 x 266 x 83
LinLED 560x24mm 4000lm 840 4C 42V CN G3	1010 147 52646	160	9600	603 x 266 x 83