

## Linear LED modules 280x28mm DAISY-7X1 2C

A linear solution for premium class indoor lighting. Optimized for LEDi's DAISY-7X1 optics. Compatible with BRIANNA optics.

### Product description

- Long life-time
- Built-in, constant current LED module
- Re-workable push-in terminals enabling easy connection
- Compliance and approval: CE, ENEC
- 2C - two connectors for series system, also recognized as a high voltage system - non-SELV
- Available CCT from 2700K to 6500K and CRI 80, 90



The image shows version 2C. The number of connectors may vary depending on the type of module.



### LinLED 2C CRI 80 G1

Product name	Ordering code	Colour temperature [K]	Current nominal If nom [mA]	Luminous flux <sup>1</sup> φ [lm]	Useful luminous flux <sup>2</sup> [lm]	Voltage <sup>1</sup> Vf [V]	Power <sup>1</sup> P [W]	Efficacy <sup>1</sup> [lm/W]	Current minimum If min <sup>3</sup> [mA]	Current maximum If max [mA]	Energy Efficiency Class
LinLED 280x28mm 2x550lm 827-865 2x2C 42V DAISY-7X1 G1	1010 117 64046	2700	85	542	564	39	3.3	163	10	150	D
		6500	85	587	611	39	3.3	176	10	150	
LinLED 280x28mm 1100lm 830 2C 42V DAISY-7X1 G1	1010 117 64146	3000	165	1086	1130	39	6.5	168	20	300	C
LinLED 280x28mm 1100lm 840 2C 42V DAISY-7X1 G1	1010 117 64246	4000	165	1142	1189	39	6.5	177	20	300	C

### LinLED 2C CRI 90 G1

Product name	Ordering code	Colour temperature [K]	Current nominal If nom [mA]	Luminous flux <sup>1</sup> φ [lm]	Useful luminous flux <sup>2</sup> [lm]	Voltage <sup>1</sup> Vf [V]	Power <sup>1</sup> P [W]	Efficacy <sup>1</sup> [lm/W]	Current minimum If min <sup>3</sup> [mA]	Current maximum If max [mA]	Energy Efficiency Class
LinLED 280x28mm 1100lm 930 2C 42V DAISY-7X1 G1	1010 127 02846	3000	185	1044	1082	41	7.6	137	20	300	E
LinLED 280x28mm 1100lm 940 2C 42V DAISY-7X1 G1	1010 117 83646	4000	185	1116	1157	41	7.6	147	20	300	D

<sup>1</sup>At nominal current and T<sub>p</sub>

<sup>2</sup>At nominal current and 25°C

<sup>3</sup>It is recommended not to operate below minimum current in order to avoid un-even brightness

Tolerance range for optical and electrical ±10%

### Temperature & humidity

Specification item	Unit	Value
T <sub>p</sub>	[°C]	45
T <sub>p</sub> rated	[°C]	65
T <sub>c</sub>	[°C]	85
Relative humidity (non-condensing)	[%]	5 ... 85
Storage ambient temperature	[°C]	-25 ... +85
Storage relative humidity (non-condensing)	[%]	5 ... 85

T<sub>p</sub> - Temperature related to the performance parameters of the LED modules

T<sub>p</sub> rated - Maximum operating temperature to which the rated performance characteristics are declared

T<sub>c</sub> - Highest permissible value for safe operation

### Technical data

Specification item	Unit	Value
Classification acc. to IEC 62031		built-in
Working voltage	[Vdc]	260
Beam angle	[deg]	120
Initial color consistency	[SDCM]	3
Photobiological safety		RG1 unlimited



## Linear LED modules 280x28mm DAISY-7X1 2C

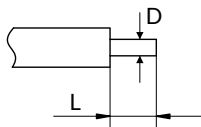
### Mounting

LED Modules cannot be exposed to tensile or compressive stresses. For this purpose it is necessary that the modules are assembled to a flat surface by only rounded head screws. Additionally plastic flat washer should be used to ensure creepage distance between screw's head and surface of the pcb. Max. torque for fixing: 0,5Nm.

LED modules are sensitive to electrostatic discharge (ESD). Follow safety regulations according to IEC 61340-5-1.

### Wiring

Wire cross section and strip length:



D - wire cross section (solid and flexible wires)	Min	Max
	0.2mm <sup>2</sup>	0.75mm <sup>2</sup>
	AWG 24	AWG 18

L - strip length	Min	Max
	8mm	9mm

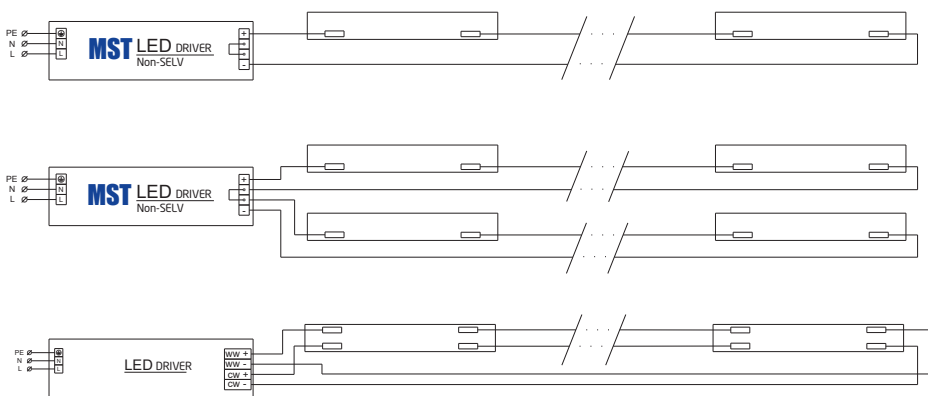
Opening for the release of wires from the top with release pin Electroterminal art. 881 167 884:



### Connections

Max number of modules	Unit	Series	Parallel
LinLED 280x28mm...	[pcs]	6	-

### Wiring for series connection system (2C)



## Linear LED modules 280x28mm DAISY-7X1 2C

### Energy Label / EPREL database

To obtain Energy Label for this product visit <https://eprel.ec.europa.eu/> and enter model identifier

Model identifier consists of 10 digits XXXX XXX XXX. It is printed directly on the LED module or on product label. This is the number you can see in EPREL database.

Ordering code consist of 12 digits XXXX XXX XXX46. Additional last two digits means packaging of the product.

### Ordering codes

Product name	Ordering code	Pieces per box	Pieces per pallet	Box dimensions [mm]
LinLED 280x28mm 2x550lm 827-865 2x2C 42V DAISY-7X1 G1	1010 117 64046	117	14040	300 x 266 x 83
LinLED 280x28mm 1100lm 830 2C 42V DAISY-7X1 G1	1010 117 64146	135	16200	300 x 266 x 83
LinLED 280x28mm 1100lm 840 2C 42V DAISY-7X1 G1	1010 117 64246	135	16200	300 x 266 x 83
LinLED 280x28mm 1100lm 940 2C 42V DAISY-7X1 G1	1010 127 02846	135	16200	300 x 266 x 83
LinLED 280x28mm 1100lm 930 2C 42V DAISY-7X1 G1	1010 117 83646	135	16200	300 x 266 x 83