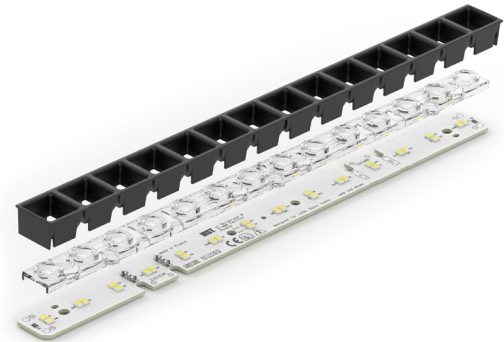


Linear LED modules 280x20mm DAISY-MINI 2C

A linear solution for premium class indoor lighting. Optimized for LEDiL's DAISY-MINI optics.

Product description

- Long life-time
- Built-in, constant current LED module
- Push-in terminals enabling easy connection
- Compliance and approval: CE, ENEC
- 2C - two connectors for series system, also recognized as a high voltage system - non-SELV
- Other CCT and CRI on request



The image shows version 2C. The number of connectors may vary depending on the type of module.



LinLED CRI 80 CJ G4

Product name	Ordering code	Colour temperature [K]	Current nominal If nom [mA]	Luminous flux ¹ φ [lm]	Useful luminous flux ² [lm]	Voltage ¹ Vf [V]	Power ¹ P [W]	Efficacy ¹ [lm/W]	Current minimum If min ³ [mA]	Current maximum If max [mA]	Energy Efficiency Class
LinLED 280x20mm 2x550lm 827-865 2x2C 42V DAISY-MINI CJ G4	1010 147 17046	2700	80	534	547	38	3.0	176	10	200	C
		6500	80	589	604	38	3.0	194	10	200	
LinLED 280x20mm 1100lm 830 2C 42V DAISY-MINI CJ G4	1010 147 17146	3000	160	1139	1168	38	6.1	188	20	400	C
LinLED 280x20mm 1100lm 840 2C 42V DAISY-MINI CJ G4	1010 147 17246	4000	160	1185	1215	38	6.1	195	20	400	C

LinLED CRI 90 G1

Product name	Ordering code	Colour temperature [K]	Current nominal If nom [mA]	Luminous flux ¹ φ [lm]	Useful luminous flux ² [lm]	Voltage ¹ Vf [V]	Power ¹ P [W]	Efficacy ¹ [lm/W]	Current minimum If min ³ [mA]	Current maximum If max [mA]	Energy Efficiency Class
LinLED 280x20mm 2x550lm 927-965 2x2C 42V DAISY-MINI G1	1010 127 05146	2700	95	497	516	41	3.9	127	10	150	E
		6500	95	571	592	41	3.9	146	10	150	
LinLED 280x20mm 1100lm 927 2C 42V DAISY-MINI G1	1010 117 97746	2700	190	995	1031	41	7.8	127	20	300	E
LinLED 280x20mm 1100lm 930 2C 42V DAISY-MINI G1	1010 117 97846	3000	190	1069	1108	41	7.8	136	20	300	E
LinLED 280x20mm 1100lm 940 2C 42V DAISY-MINI G1	1010 117 97946	4000	190	1142	1184	41	7.8	146	20	300	D

¹At nominal current and T_p

²At nominal current and 25°C

³It is recommended not to operate below minimum current in order to avoid un-even brightness

Tolerance range for optical and electrical ±10%

Temperature & humidity

Specification item	Unit	Value
T _p	[°C]	45
T _p rated	[°C]	65
T _c	[°C]	85
Relative humidity (non-condensing)	[%]	5 ... 85
Storage ambient temperature	[°C]	-25 ... +85
Storage relative humidity (non-condensing)	[%]	5 ... 85

T_p - Temperature related to the performance parameters of the LED modules

T_p rated - Maximum operating temperature to which the rated performance characteristics are declared

T_c - Highest permissible value for safe operation

Linear LED modules 280x20mm DAISY-MINI 2C

Technical data

Specification item	Unit	Value
Classification acc. to IEC 62031		built-in
Working voltage		250
Beam angle	[deg]	120
Initial color consistency	[SDCM]	3
Photobiological safety		RG1 unlimited

Color coordinates

According to CIE 1931

Specification item	CIEx	CIEy
2700K	0.4578	0.4101
3000K	0.4338	0.4030
4000K	0.3818	0.3797
6500K	0.3123	0.3282

Certificates & standards

Specification item	Compliant
ENEC	Yes
CE	Yes
RoHS	Yes
REACH	Yes
IP rating	No IP rating

Lumen maintenance

for CJ G4

Forward current	Tp temp.	L70 [h]		L80 [h]		L90 [h]	
		B50	B10	B50	B10	B50	B10
If nom	45°C	>102 000	>102 000	>102 000	>102 000	>102 000	>102 000
	55°C	>102 000	>102 000	>102 000	>102 000	>102 000	>102 000
	65°C	>102 000	>102 000	>102 000	>102 000	87 000	86 000
	75°C	>102 000	>102 000	>102 000	>102 000	74 000	73 000
	85°C	>102 000	>102 000	>102 000	>102 000	63 000	62 000
If max	45°C	>102 000	>102 000	>102 000	>102 000	>102 000	>102 000
	55°C	>102 000	>102 000	>102 000	>102 000	97 000	96 000
	65°C	>102 000	>102 000	>102 000	>102 000	82 000	81 000
	75°C	>102 000	>102 000	>102 000	>102 000	69 000	68 000
	85°C	>102 000	>102 000	>102 000	>102 000	59 000	58 000

Reported data based on LM80 LED data (17 000h)

for G1

Forward current	Tp temp.	L70 [h]		L80 [h]		L90 [h]	
		B50	B10	B50	B10	B50	B10
If nom	45°C	>60 000	>60 000	>60 000	>60 000	54 000	52 000
	65°C	>60 000	>60 000	>60 000	>60 000	44 000	42 000
	85°C	>60 000	>60 000	>60 000	>60 000	35 000	31 000
If max	45°C	>60 000	>60 000	52 000	49 000	29 000	28 000
	65°C	>60 000	>60 000	47 000	44 000	25 000	24 000
	85°C	>60 000	58 000	41 000	38 000	22 000	19 000

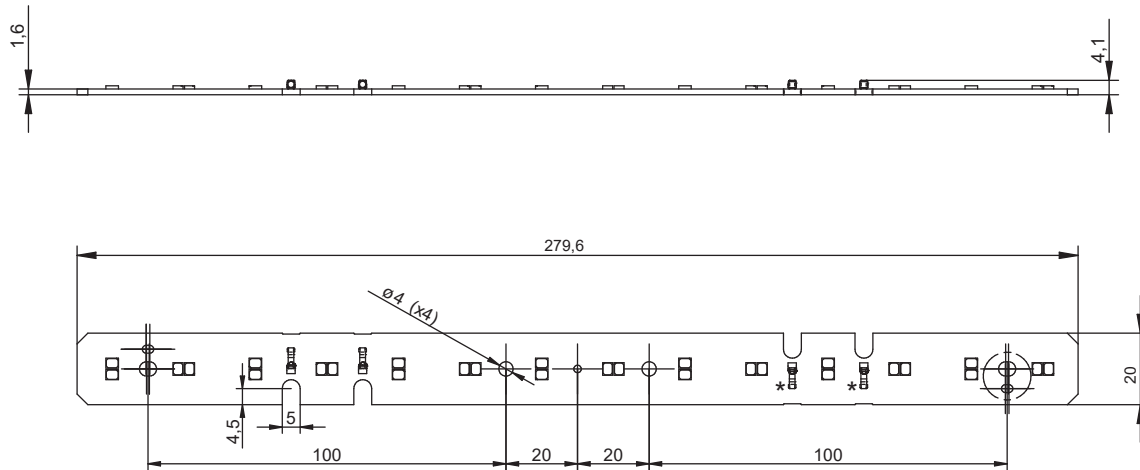
reported data based on LM80 LED data 10 000h

Linear LED modules 280x20mm DAISY-MINI 2C

Dimensions

Product name	Connectors (*)
LinLED 280x20mm ... 2x2C	Yes
LinLED 280x20mm ... 2C	No

LinLED 280x20mm



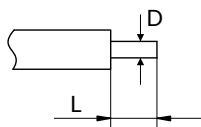
Mounting

LED Modules cannot be exposed to tensile or compressive stresses. For this purpose it is necessary that the modules are assembled to a flat surface by only rounded head screws. Additionally plastic flat washer should be used to ensure creepage distance between screw's head and surface of the pcb. Max. torque for fixing: 0,5Nm.

LED modules are sensitive to electrostatic discharge (ESD). Follow safety regulations according to IEC 61340-5-1.

Wiring

Wire cross section and strip length:



D - wire cross section (solid and flexible wires)	Min	Max
	0.2mm ²	0.5mm ²
	AWG 24	AWG 20

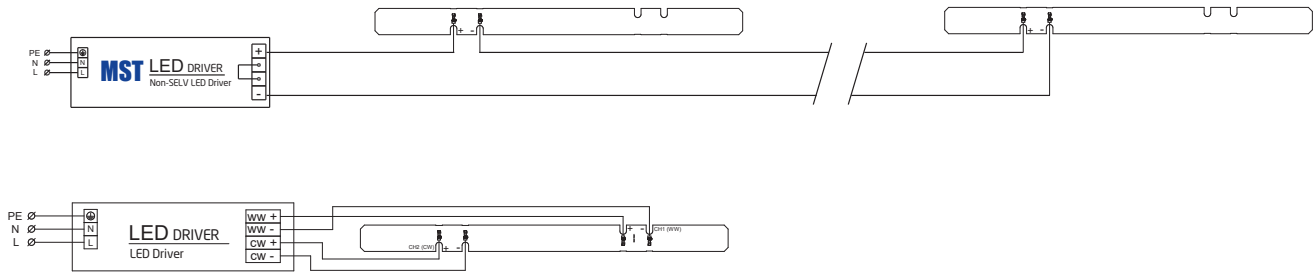
L - strip length	Min	Max
	5.2mm	5.8mm

Linear LED modules 280x20mm DAISY-MINI 2C

Connections

Max number of modules	Unit	Series	Parallel
LinLED 280x20mm...	[pcs]	6	-

Wiring for series connection system (2C)



To prevent irregular luminous intensity in parallel connection use only LED modules from the same V-code group. V-code (e.g. "A", "B", "AB") is printed on the LED module and box label. Naming is not adequate to efficacy or luminous flux.

Energy Label / EPREL database

To obtain Energy Label for this product visit <https://eprel.ec.europa.eu/> and enter model identifier

Model identifier consists of 10 digits XXXX XXX XXX. It is printed directly on the LED module or on product label. This is the number you can see in EPREL database.

Ordering code consist of 12 digits XXXX XXX XXX46. Additional last two digits means packaging of the product.

Ordering codes

Product name	Ordering code	Pieces per box	Pieces per pallet	Box dimensions [mm]
LinLED 280x20mm 2x550lm 827-865 2x2C 42V DAISY-MINI CJ G4	1010 147 17046	180	21600	300 x 266 x 83
LinLED 280x20mm 1100lm 830 2C 42V DAISY-MINI CJ G4	1010 147 17146	180	21600	300 x 266 x 83
LinLED 280x20mm 1100lm 840 2C 42V DAISY-MINI CJ G4	1010 147 17246	180	21600	300 x 266 x 83
LinLED 280x20mm 2x550lm 927-965 2x2C 42V DAISY-MINI G1	1010 127 05146	180	21600	300 x 266 x 83
LinLED 280x20mm 1100lm 927 2C 42V DAISY-MINI G1	1010 117 97746	180	21600	300 x 266 x 83
LinLED 280x20mm 1100lm 930 2C 42V DAISY-MINI G1	1010 117 97846	180	21600	300 x 266 x 83
LinLED 280x20mm 1100lm 940 2C 42V DAISY-MINI G1	1010 117 97946	180	21600	300 x 266 x 83