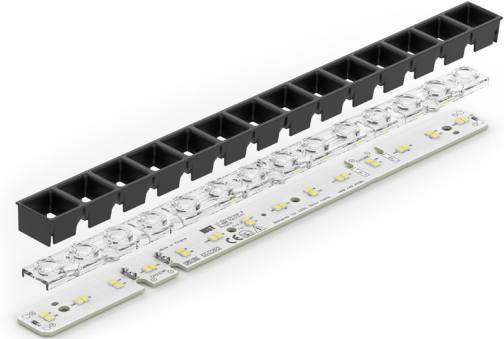


## Linear LED modules 280x20mm DAISY-MINI 2C

A linear solution for premium class indoor lighting. Optimized for LEDi's DAISY-MINI optics.

### Product description

- Long life-time
- Built-in, constant current LED module
- Push-in terminals enabling easy connection
- Compliance and approval: CE, ENEC
- 2C - two connectors for series system, also recognized as a high voltage system - non-SELV
- Available CCT from 2700K to 6500K and CRI 80, 90



The image shows version 2C. The number of connectors may vary depending on the type of module.



### LinLED 2C CRI 80 G1

Product name	Ordering code	Colour temperature [K]	Current nominal If nom [mA]	Luminous flux <sup>1</sup> φ [lm]	Useful luminous flux <sup>2</sup> [lm]	Voltage <sup>1</sup> Vf [V]	Power <sup>1</sup> P [W]	Efficacy <sup>1</sup> [lm/W]	Current minimum If min <sup>3</sup> [mA]	Current maximum If max [mA]	Energy Efficiency Class
LinLED 280x20mm 2x550lm 827-865 2x2C 42V DAISY-MINI G1	1010 117 67946	2700	85	542	571	39	3.3	163	10	150	D
		6500	85	587	618	39	3.3	176	10	150	
LinLED 280x20mm 1100lm 830 2C 42V DAISY-MINI G1	1010 117 68046	3000	165	1106	1145	40	6.5	170	20	300	C
LinLED 280x20mm 1100lm 840 2C 42V DAISY-MINI G1	1010 117 68146	4000	165	1162	1202	40	6.5	178	20	300	C

### LinLED 2C CRI 90 G1

Product name	Ordering code	Colour temperature [K]	Current nominal If nom [mA]	Luminous flux <sup>1</sup> φ [lm]	Useful luminous flux <sup>2</sup> [lm]	Voltage <sup>1</sup> Vf [V]	Power <sup>1</sup> P [W]	Efficacy <sup>1</sup> [lm/W]	Current minimum If min <sup>3</sup> [mA]	Current maximum If max [mA]	Energy Efficiency Class
LinLED 280x20mm 2x550lm 927-965 2x2C 42V DAISY-MINI G1	1010 127 05146	2700	95	497	516	41	3.9	127	10	150	E
		6500	95	571	592	41	3.9	146	10	150	
LinLED 280x20mm 1100lm 927 2C 42V DAISY-MINI G1	1010 117 97746	2700	190	995	1031	41	7.8	127	20	300	E
LinLED 280x20mm 1100lm 930 2C 42V DAISY-MINI G1	1010 117 97846	3000	190	1069	1108	41	7.8	136	20	300	E
LinLED 280x20mm 1100lm 940 2C 42V DAISY-MINI G1	1010 117 97946	4000	190	1142	1184	41	7.8	146	20	300	D

<sup>1</sup>At nominal current and T<sub>p</sub>

<sup>2</sup>At nominal current and 25°C

<sup>3</sup>It is recommended not to operate below minimum current in order to avoid un-even brightness

Tolerance range for optical and electrical ±10%

### Temperature & humidity

Specification item	Unit	Value
T <sub>p</sub>	[°C]	45
T <sub>p rated</sub>	[°C]	65
T <sub>c</sub>	[°C]	85
Relative humidity (non-condensing)	[%]	5 ... 85
Storage ambient temperature	[°C]	-25 ... +85
Storage relative humidity (non-condensing)	[%]	5 ... 85

T<sub>p</sub> - Temperature related to the performance parameters of the LED modules

T<sub>p rated</sub> - Maximum operating temperature to which the rated performance characteristics are declared

T<sub>c</sub> - Highest permissible value for safe operation

## Linear LED modules 280x20mm DAISY-MINI 2C

### Technical data

Specification item	Unit	280x20mm
Classification acc. to IEC 62031		built-in
Working voltage		250
Beam angle	[deg]	120
Initial color consistency	[SDCM]	3
Photobiological safety		RG1 unlimited

### Color coordinates

According to CIE 1931

Specification item	CIEx	CIEy
2700K	0.4578	0.4101
3000K	0.4338	0.4030
4000K	0.3818	0.3797
6500K	0.3123	0.3282

### Certificates & standards

Specification item	Compliant
ENEC	Yes
CE	Yes
RoHS	Yes
REACH	Yes
Zhaga	No
IP rating	No IP rating

### Lumen maintenance

#### LinLED CRI 80

Forward current	Tp temp.	L70 [h]		L80 [h]		L90 [h]	
		B50	B10	B50	B10	B50	B10
If nom	45°C	>72 000	>72 000	>72 000	>72 000	63 000	52 000
	55°C	>72 000	>72 000	>72 000	>72 000	63 000	52 000
	65°C	>72 000	>72 000	>72 000	>72 000	61 000	51 000
	75°C	>72 000	>72 000	>72 000	>72 000	59 000	50 000
	85°C	>72 000	>72 000	>72 000	>72 000	58 000	49 000
If max	45°C	>72 000	>72 000	>72 000	>72 000	51 000	39 000
	55°C	>72 000	>72 000	>72 000	>72 000	51 000	39 000
	65°C	>72 000	>72 000	>72 000	>72 000	48 000	37 000
	75°C	>72 000	>72 000	>72 000	>72 000	45 000	35 000
	85°C	>72 000	>72 000	>72 000	69 000	43 000	34 000

reported data based on LM80 LED data (@65mA 17000h / @160mA & 200mA 12000h)

#### LinLED CRI 90

Forward current	Tp temp.	L70 [h]		L80 [h]		L90 [h]	
		B50	B10	B50	B10	B50	B10
If nom	45°C	>60 000	>60 000	>60 000	>60 000	54 000	52 000
	65°C	>60 000	>60 000	>60 000	>60 000	44 000	42 000
If max	85°C	>60 000	>60 000	>60 000	>60 000	35 000	31 000
	45°C	>60 000	>60 000	52 000	49 000	29 000	28 000
	65°C	>60 000	>60 000	47 000	44 000	25 000	24 000
	85°C	>60 000	58 000	41 000	38 000	22 000	19 000

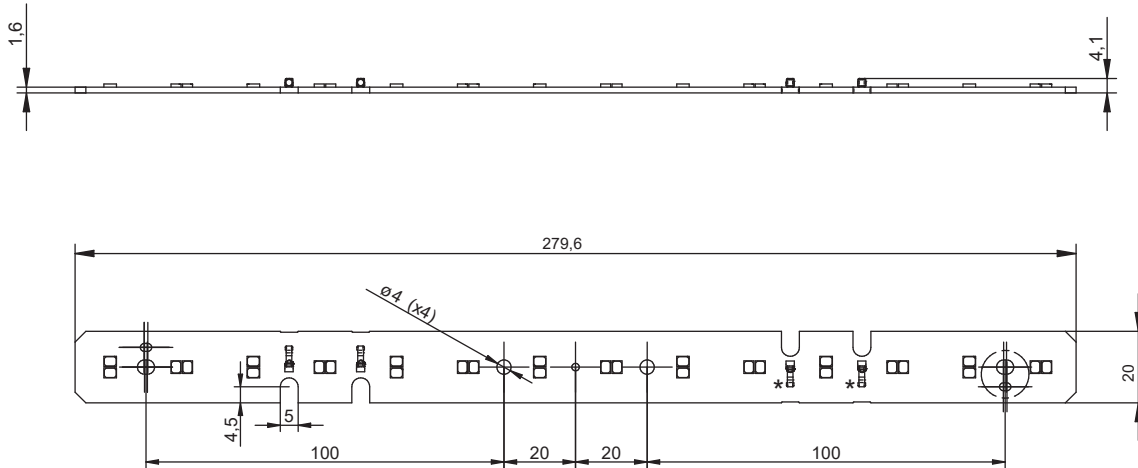
reported data based on LM80 LED data 10 000h

### Dimensions

Product name	Ordering code	Connectors (*)
LinLED 280x20mm 2x550lm 827-865 2x2C 42V DAISY-MINI G1	1010 117 67946	Yes
LinLED 280x20mm 1100lm 830 2C 42V DAISY-MINI G1	1010 117 68046	No
LinLED 280x20mm 1100lm 840 2C 42V DAISY-MINI G1	1010 117 68146	No
LinLED 280x20mm 2x550lm 927-965 2x2C 42V DAISY-MINI G1	1010 127 05146	Yes
LinLED 280x20mm 1100lm 927 2C 42V DAISY-MINI G1	1010 117 97746	No
LinLED 280x20mm 1100lm 930 2C 42V DAISY-MINI G1	1010 117 97846	No
LinLED 280x20mm 1100lm 940 2C 42V DAISY-MINI G1	1010 117 97946	No

## Linear LED modules 280x20mm DAISY-MINI 2C

LinLED 280x20mm



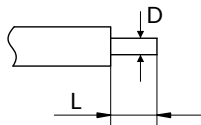
### Mounting

LED Modules cannot be exposed to tensile or compressive stresses. For this purpose it is necessary that the modules are assembled to a flat surface by only rounded head screws. Additionally plastic flat washer should be used to ensure creepage distance between screw's head and surface of the pcb. Max. torque for fixing: 0,5Nm.

LED modules are sensitive to electrostatic discharge (ESD). Follow safety regulations according to IEC 61340-5-1.

### Wiring

Wire cross section and strip length:



D - wire cross section (solid and flexible wires)	Min	Max
	0.2mm <sup>2</sup>	0.5mm <sup>2</sup>
	AWG 24	AWG 20

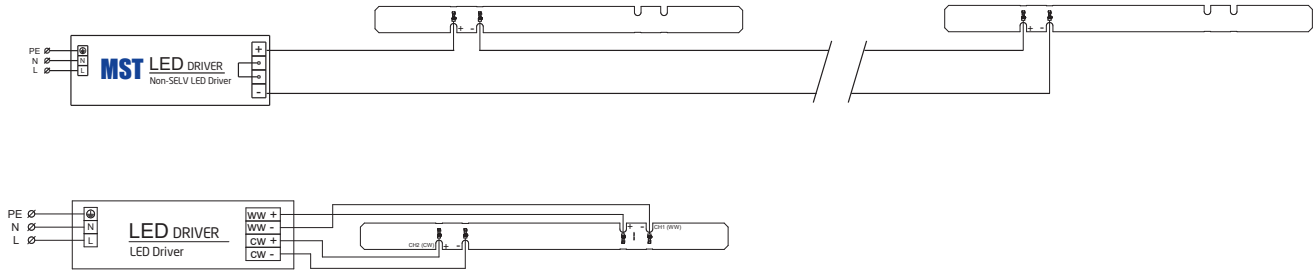
L - strip length	Min	Max
	5.2mm	5.8mm

## Linear LED modules 280x20mm DAISY-MINI 2C

### Connections

Max number of modules	Unit	Series	Parallel
LinLED 280x20mm...	[pcs]	6	-

### Wiring for series connection system (2C)



To prevent irregular luminous intensity in parallel connection use only LED modules from the same V-code group. V-code (e.g. "A", "B", "AB") is printed on the LED module and box label. Naming is not adequate to efficacy or luminous flux.

### Energy Label / EPREL database

To obtain Energy Label for this product visit <https://eprel.ec.europa.eu/> and enter model identifier

Model identifier consists of 10 digits XXXX XXX XXX. It is printed directly on the LED module or on product label. This is the number you can see in EPREL database.

Ordering code consist of 12 digits XXXX XXX XXX46. Additional last two digits means packaging of the product.

### Ordering codes

Product name	Ordering code	Pieces per box	Pieces per pallet	Box dimensions [mm]
LinLED 280x20mm 2x550lm 827-865 2x2C 42V DAISY-MINI G1	1010 117 67946	187	20196	298 x 238 x 88
LinLED 280x20mm 1100lm 830 2C 42V DAISY-MINI G1	1010 117 68046	187	20196	298 x 238 x 88
LinLED 280x20mm 1100lm 840 2C 42V DAISY-MINI G1	1010 117 68146	187	20196	298 x 238 x 88
LinLED 280x20mm 2x550lm 927-965 2x2C 42V DAISY-MINI G1	1010 127 05146	187	20196	298 x 238 x 88
LinLED 280x20mm 1100lm 927 2C 42V DAISY-MINI G1	1010 117 97746	187	20196	298 x 238 x 88
LinLED 280x20mm 1100lm 930 2C 42V DAISY-MINI G1	1010 117 97846	187	20196	298 x 238 x 88
LinLED 280x20mm 1100lm 940 2C 42V DAISY-MINI G1	1010 117 97946	187	20196	298 x 238 x 88