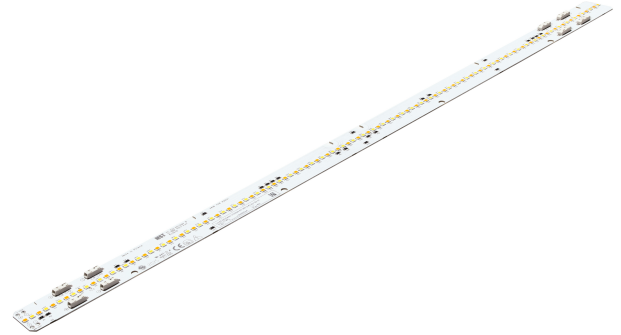


## Linear LED modules Tunable White

### Product description

- Long life-time
- Built-in, constant current LED module
- Re-workable push-in terminals enabling easy connection
- Compliance and approval: CE
- 4C - four connectors for parallel system, also recognized as a low voltage system - SELV
- Available CCT from 2700K to 6500K and CRI 80, 90 and 95



### LinLED CRI 80

Product name	Ordering code	Colour temperature [K]	Current nominal If nom [mA]	Luminous flux @ If nom & Tp Φ [lm]	Voltage @ If nom & Tp Vf [V]	Power @ If nom & Tp P [W]	Efficacy @ If nom & Tp [lm/W]	Current maximum If max [mA]
LinLED 280x24mm 2x1000lm 827-865 2x4C 42V Opt G1	1010 117 89046	2700	150	986	40	6.0	165	300
		6500	150	1066	40	6.0	179	300
LinLED 560x24mm 2x2000lm 827-865 2x4C 42V Opt G1	1010 117 89146	2700	300	1971	40	12	165	600
		6500	300	2132	40	12	179	600

Tolerance range for optical and electrical ±10%

### Temperature & humidity

Specification item	Unit	Value
<b>Tp</b>	[°C]	45
<b>Tp rated</b>	[°C]	65
<b>Tc</b>	[°C]	85
<b>Relative humidity (non-condensing)</b>	[%]	5 ... 85
<b>Storage ambient temperature</b>	[°C]	-25 ... +85
<b>Storage relative humidity (non-condensing)</b>	[%]	5 ... 85

Tp - Temperature related to the performance parameters of the LED modules

Tp rated - Maximum operating temperature to which the rated performance characteristics are declared

Tc - Highest permissible value for safe operation

## Linear LED modules Tunable White

### Technical data

Specification item	Unit	Value
Classification acc. to IEC 62031	[V]	built-in
Energy Efficiency Class		A++
Working voltage	[Vdc]	60
Beam angle	[deg]	120
Initial color consistency	[SDCM]	3
Initial color coordinates		Acc. to CIE 1931
Photobiological safety		RG1 unlimited

### Certificates & standards

Specification item	Compliant
ENEC	No
CE	Yes
RoHS	Yes
REACH	Yes
Zhaga	No
IP rating	No IP rating
Overheating protection	No

### Lumen maintenance

#### LinLED CRI 80

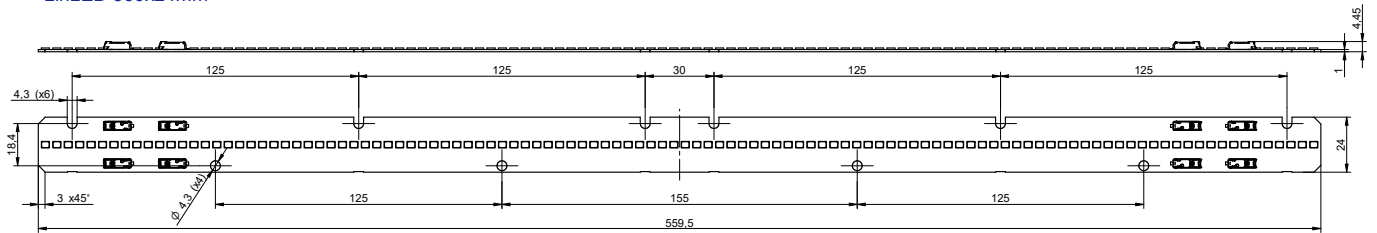
Forward current	Tp temperature	L70 [h]		L80 [h]		L90 [h]	
		B50	B10	B50	B10	B50	B10
If nom	45°C	>60 000	>60 000	>60 000	>60 000	>60 000	>60 000
	55°C	>60 000	>60 000	>60 000	>60 000	>60 000	59 000
	65°C	>60 000	>60 000	>60 000	>60 000	>60 000	52 000
If max	45°C	>60 000	>60 000	>60 000	>60 000	>60 000	57 000
	55°C	>60 000	>60 000	>60 000	>60 000	>60 000	54 000
	65°C	>60 000	>60 000	>60 000	>60 000	57 000	48 000

simulation based on LM80 LED data (10,000h)

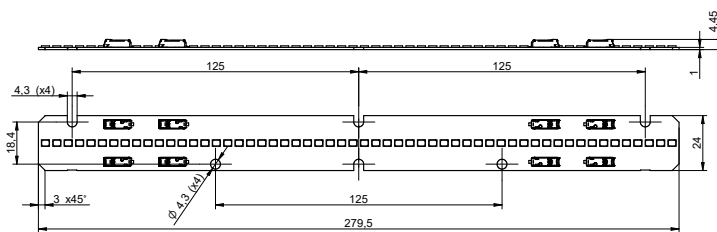
## Linear LED modules Tunable White

### Dimensions

LinLED 560x24mm

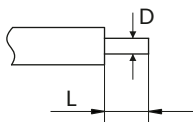


LinLED 280x24mm



### Wiring

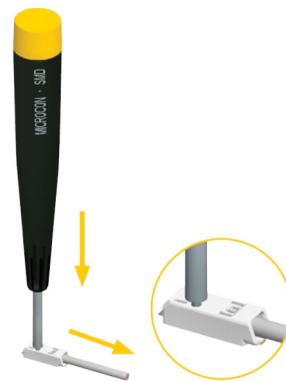
Wire cross section and strip length:



D - wire cross section <i>solid and flexible wires</i>	Min	Max
	0.2mm <sup>2</sup>	0.75mm <sup>2</sup>
	AWG 18	AWG 24

L - strip length	Min	Max
	8mm	9mm

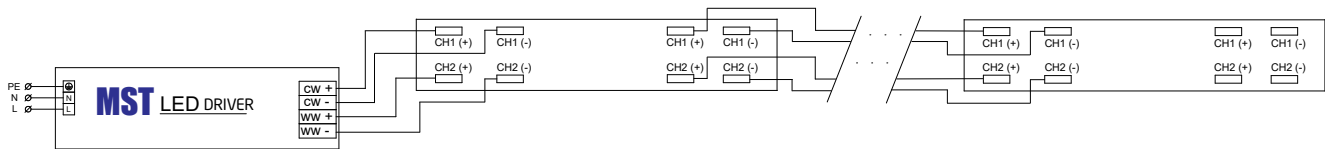
Opening for the release of wires from the top with release pin Electroterminal art. 881 167 884:



## Linear LED modules Tunable White

### Connections

Max number of modules	Unit	Series	Parallel
LinLED 280x24mm 2x1000lm 827-865 2x4C 42V Opt G1	[pcs]	-	8
LinLED 560x24mm 2x2000lm 827-865 2x4C 42V Opt G1	[pcs]	-	4



### Mounting

LED Modules cannot be exposed to tensile or compressive stresses. For this purpose it is necessary that the modules are assembled to a flat surface by only rounded head screws. Additionally plastic flat washer should be used to ensure creepage distance between screw's head and surface of the pcb. Max. torque for fixing: 0,5Nm.

LED modules are sensitive to electrostatic discharge (ESD). Follow safety regulations according to IEC 61340-5-1.

### Ordering codes

Specification item	Ordering code	Pieces per box	Pieces per pallet
LinLED 280x24mm 2x1000lm 827-865 2x4C 42V Opt G1	1010 117 89046	135	14580
LinLED 560x24mm 2x2000lm 827-865 2x4C 42V Opt G1	1010 117 89146	132	5280