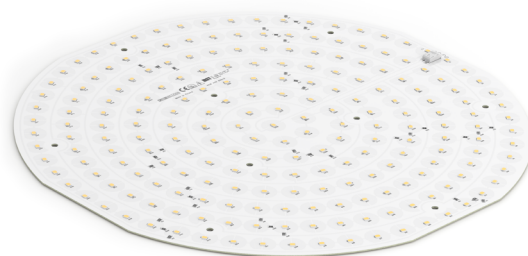


Round LED modules 350mm FLAT

Product description

- Long life-time
- Built-in, constant current LED module
- Re-workable push-in terminals enabling easy connection
- Compliance and approval: CE, ENEC
- Available CCT from 2700K to 6500K and CRI 80, 90



RdLED CRI 80 CJ G4

Product name	Ordering code	Colour temperature [K]	Current nominal If nom [mA]	Luminous flux ¹ φ [lm]	Useful luminous flux ² [lm]	Voltage ¹ Vf [V]	Power ¹ P [W]	Efficacy ¹ [lm/W]	Current minimum If min ³ [mA]	Current maximum If max [mA]	Energy Efficiency Class
RdLED 350mm 4000lm 830 36V FLAT CJ G4	1010 147 75146	3000	630	3926	4027	32	20	196	180	3600	B
RdLED 350mm 4000lm 830 108V FLAT CJ G4	1010 147 75346		210	3926	4027	95	20	196	60	1200	B
RdLED 350mm 4000lm 840 36V FLAT CJ G4	1010 147 75246	4000	630	4083	4188	32	20	204	180	3600	B
RdLED 350mm 4000lm 840 108V FLAT CJ G4	1010 147 75446		210	4083	4188	95	20	204	60	1200	B

RdLED CRI 80 CN G3

Product name	Ordering code	Colour temperature [K]	Current nominal If nom [mA]	Luminous flux ¹ φ [lm]	Useful luminous flux ² [lm]	Voltage ¹ Vf [V]	Power ¹ P [W]	Efficacy ¹ [lm/W]	Current minimum If min ³ [mA]	Current maximum If max [mA]	Energy Efficiency Class
RdLED 350mm 4000lm 830 36V FLAT CN G3	1010 147 74746	3000	660	3935	4072	32	21	187	180	2700	C
RdLED 350mm 4000lm 830 108V FLAT CN G3	1010 147 74946		220	3935	4072	95	21	187	60	900	C
RdLED 350mm 4000lm 840 36V FLAT CN G3	1010 147 74846	4000	660	4151	4296	32	21	198	180	2700	B
RdLED 350mm 4000lm 840 108V FLAT CN G3	1010 147 75046		220	4151	4296	95	21	198	60	900	B

RdLED CRI 80 LG G2

Product name	Ordering code	Colour temperature [K]	Current nominal If nom [mA]	Luminous flux ¹ φ [lm]	Useful luminous flux ² [lm]	Voltage ¹ Vf [V]	Power ¹ P [W]	Efficacy ¹ [lm/W]	Current minimum If min ³ [mA]	Current maximum If max [mA]	Energy Efficiency Class
RdLED 350mm 4000lm 830 36V FLAT LG G2	1010 147 74346	3000	660	3907	4029	32	21	183	180	2700	C
RdLED 350mm 4000lm 830 108V FLAT LG G2	1010 147 74546		220	3907	4029	97	21	183	60	900	C
RdLED 350mm 4000lm 840 36V FLAT LG G2	1010 147 74446	4000	660	4152	4281	32	21	194	180	2700	C
RdLED 350mm 4000lm 840 108V FLAT LG G2	1010 147 74646		220	4152	4281	97	21	194	60	900	C

RdLED CRI 90 EH1.1 G3

Product name	Ordering code	Colour temperature [K]	Current nominal If nom [mA]	Luminous flux ¹ φ [lm]	Useful luminous flux ² [lm]	Voltage ¹ Vf [V]	Power ¹ P [W]	Efficacy ¹ [lm/W]	Current minimum If min ³ [mA]	Current maximum If max [mA]	Energy Efficiency Class
RdLED 350mm 4000lm 927 36V FLAT EH1.1 G3	1010 147 91446	2700	680	3905	4024	33	23	174	180	2700	C
RdLED 350mm 4000lm 930 36V FLAT EH1.1 G3	1010 127 69746	3000	680	3905	4024	33	23	174	180	2700	C
RdLED 350mm 4000lm 940 36V FLAT EH1.1 G3	1010 127 11346	4000	680	4149	4275	33	23	184	180	2700	C

¹At nominal current and T_p

²At nominal current and 25°C

³It is recommended not to operate below minimum current in order to avoid un-even brightness

Tolerance range for optical and electrical ±10%

Round LED modules 350mm FLAT

Temperature & humidity

Specification item	Unit	Value
Tp	[°C]	45
Tp rated	[°C]	65
Tc	[°C]	85
Relative humidity (non-condensing)	[%]	5 ... 85
Storage ambient temperature	[°C]	-25 ... +85
Storage relative humidity (non-condensing)	[%]	5 ... 85

Tp - Temperature related to the performance parameters of the LED modules

Tp rated - Maximum operating temperature to which the rated performance characteristics are declared

Tc - Highest permissible value for safe operation

Technical data

Specification item	Unit	Value
Classification acc. to IEC 62031		built-in
Working voltage	[Vdc]	350
Beam angle	[deg]	120
Initial color consistency	[SDCM]	3
Photobiological safety		RG1 unlimited

Color coordinates

According to CIE 1931

Specification item	CIEx	CIEy
2700K	0.4578	0.4101
3000K	0.4338	0.4030
4000K	0.3818	0.3797
6500K	0.3123	0.3282

Certificates & standards

Specification item	Compliant
ENEC	Yes
CE	Yes
RoHS	Yes
REACH	Yes
IP rating	No IP rating

Lumen maintenance

for LE G5, LG G2, LA G3

Forward current	Tp temp.	L70 [h]		L80 [h]		L90 [h]	
		B50	B10	B50	B10	B50	B10
If nom	45°C	>100 000	>100 000	>100 000	>100 000	>100 000	>100 000
	55°C	>100 000	>100 000	>100 000	>100 000	>100 000	>100 000
	65°C	>100 000	>100 000	>100 000	>100 000	>100 000	>100 000
	75°C	>100 000	>100 000	>100 000	>100 000	>100 000	98 000
	85°C	>100 000	>100 000	>100 000	>100 000	81 000	73 000
If max	45°C	>100 000	>100 000	92 000	87 000	45 000	42 000
	55°C	>100 000	>100 000	92 000	87 000	45 000	42 000
	65°C	>100 000	>100 000	92 000	87 000	45 000	42 000
	75°C	>100 000	>100 000	92 000	87 000	45 000	42 000
	85°C	>100 000	>100 000	92 000	87 000	45 000	42 000

Calculated data based on LM80 LED data (12 000h)

for CJ G4, CN G3

Forward current	Tp temp.	L70 [h]		L80 [h]		L90 [h]	
		B50	B10	B50	B10	B50	B10
If nom	45°C	>102 000	>102 000	>102 000	>102 000	>102 000	>102 000
	55°C	>102 000	>102 000	>102 000	>102 000	>102 000	>102 000
	65°C	>102 000	>102 000	>102 000	>102 000	89 000	88 000
	75°C	>102 000	>102 000	>102 000	>102 000	75 000	74 000
	85°C	>102 000	>102 000	>102 000	>102 000	64 000	63 000
If max	45°C	>102 000	>102 000	>102 000	>102 000	>102 000	>102 000
	55°C	>102 000	>102 000	>102 000	>102 000	97 000	96 000
	65°C	>102 000	>102 000	>102 000	>102 000	82 000	81 000
	75°C	>102 000	>102 000	>102 000	>102 000	69 000	68 000
	85°C	>102 000	>102 000	>102 000	>102 000	59 000	58 000

Reported data based on LM80 LED data (17 000h)

Round LED modules 350mm FLAT

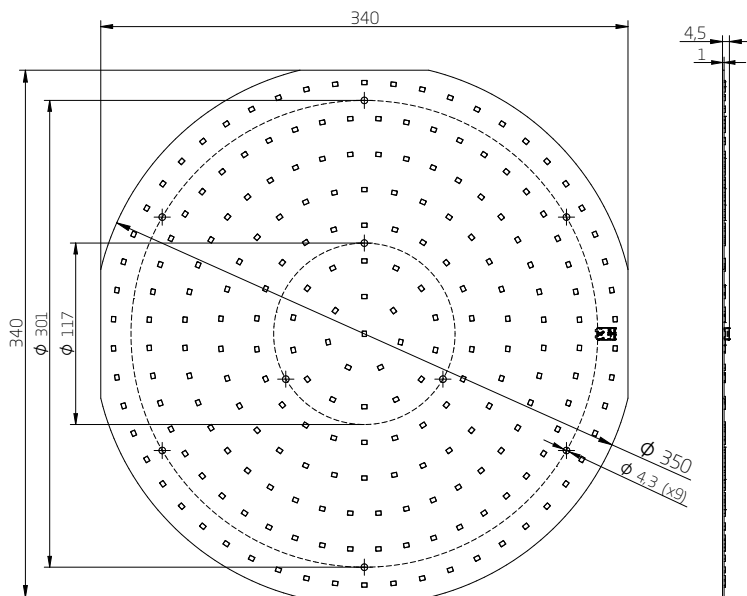
Lumen maintenance

for EH1.1 G3

Forward current	Tp temp.	L70 [h]		L80 [h]		L90 [h]	
		B50	B10	B50	B10	B50	B10
If nom	45°C	>72 000	>72 000	>72 000	>72 000	>72 000	>72 000
	55°C	>72 000	>72 000	>72 000	>72 000	>72 000	>72 000
	65°C	>72 000	>72 000	>72 000	>72 000	>72 000	>72 000
	75°C	>72 000	>72 000	>72 000	>72 000	>72 000	>72 000
	85°C	>72 000	>72 000	>72 000	>72 000	>72 000	>72 000
If max	45°C	>72 000	>72 000	67 000	62 000	30 000	29 000
	55°C	>72 000	>72 000	66 000	61 000	30 000	28 000
	65°C	>72 000	>72 000	65 000	60 000	29 000	27 000
	75°C	>72 000	>72 000	65 000	59 000	29 000	26 000
	85°C	>72 000	>72 000	64 000	58 000	28 000	26 000

Calculated data based on LM80 LED data (12 000h)

Dimensions



Mounting

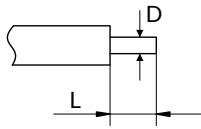
LED Modules cannot be exposed to tensile or compressive stresses. For this purpose it is necessary that the modules are assembled to a flat surface by only rounded head screws. Additionally plastic flat washer should be used to ensure creepage distance between screw's head and surface of the pcb. Max. torque for fixing: 0,5Nm.

LED modules are sensitive to electrostatic discharge (ESD). Follow safety regulations according to IEC 61340-5-1.

Round LED modules 350mm FLAT

Wiring

Wire cross section and strip length:



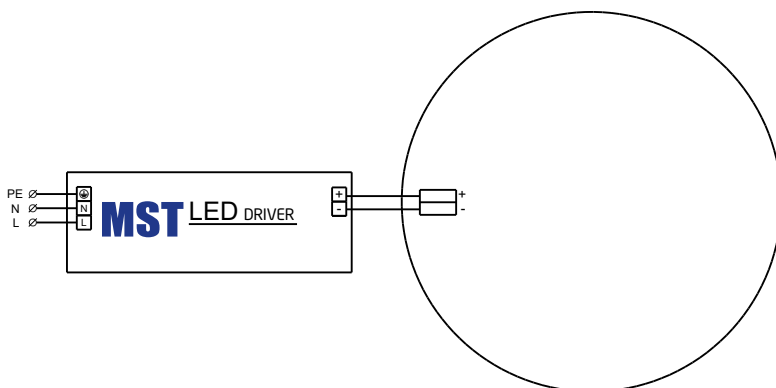
D - wire cross section (solid and flexible wires)	Min	Max
	0.2mm ²	0.75mm ²
	AWG 24	AWG 18

L - strip length	Min	Max
	8mm	9mm

Opening for the release of wires from the top
with release pin Electroterminal art. 881 167 884:



Connections



Energy Label / EPREL database

To obtain Energy Label for this product visit <https://eprel.ec.europa.eu/> and enter model identifier

Model identifier consists of 10 digits XXXX XXX XXX. It is printed directly on the LED module or on product label. This is the number you can see in EPREL database.

Ordering code consist of 12 digits XXXX XXX XXX46. Additional last two digits means packaging of the product.

Round LED modules 350mm FLAT

Ordering codes

Product name	Ordering code	Pieces per box	Pieces per pallet	Box dimensions [mm]
RdLED 350mm 4000lm 830 36V FLAT CJ G4	1010 147 75146	12	1008	363 x 363 x 58
RdLED 350mm 4000lm 830 108V FLAT CJ G4	1010 147 75346	12	1008	363 x 363 x 58
RdLED 350mm 4000lm 840 36V FLAT CJ G4	1010 147 75246	12	1008	363 x 363 x 58
RdLED 350mm 4000lm 840 108V FLAT CJ G4	1010 147 75446	12	1008	363 x 363 x 58
RdLED 350mm 4000lm 830 36V FLAT CN G3	1010 147 74746	12	1008	363 x 363 x 58
RdLED 350mm 4000lm 830 108V FLAT CN G3	1010 147 74946	12	1008	363 x 363 x 58
RdLED 350mm 4000lm 840 36V FLAT CN G3	1010 147 74846	12	1008	363 x 363 x 58
RdLED 350mm 4000lm 840 108V FLAT CN G3	1010 147 75046	12	1008	363 x 363 x 58
RdLED 350mm 4000lm 830 36V FLAT LG G2	1010 147 74346	12	1008	363 x 363 x 58
RdLED 350mm 4000lm 830 108V FLAT LG G2	1010 147 74546	12	1008	363 x 363 x 58
RdLED 350mm 4000lm 840 36V FLAT LG G2	1010 147 74446	12	1008	363 x 363 x 58
RdLED 350mm 4000lm 840 108V FLAT LG G2	1010 147 74646	12	1008	363 x 363 x 58
RdLED 350mm 4000lm 927 36V FLAT EH1.1 G3	1010 147 91446	12	1008	363 x 363 x 58
RdLED 350mm 4000lm 930 36V FLAT EH1.1 G3	1010 127 69746	12	1008	363 x 363 x 58
RdLED 350mm 4000lm 940 36V FLAT EH1.1 G3	1010 127 11346	12	1008	363 x 363 x 58