

Rectangular LED modules 62x62mm DAISY-2x2

A rectangular solution for premium class indoor lighting. Optimized for LEDiL's DAISY-2x2 optics.

Product description

- Long life-time
- Built-in, constant current LED module
- Re-workable push-in terminals enabling easy connection
- Compliance and approval: CE
- Parallel system, also recognized as a low voltage system - SELV
- Available CCT from 2200K to 6500K and CRI 80, 90



RecLED CRI 80 G1

Product name	Ordering code	Colour temperature [K]	Current nominal If nom [mA]	Luminous flux* ϕ [lm]	Voltage* Vf [V]	Power* P [W]	Efficacy* [lm/W]	Current maximum If max [mA]
RecLED 62x62mm 1600lm 827-865 36V G1	1010 117 66246	2700	160	762	35	5.7	134	240
RecLED 62x62mm 1600lm 830 36V G1	1010 117 66346	6500	160	824	35	5.7	145	240
RecLED 62x62mm 1600lm 840 36V G1	1010 117 66446	3000	330	1627	36	12	138	480
RecLED 62x62mm 1600lm 840 36V G1	1010 117 66446	4000	330	1723	36	12	147	480

RecLED CRI 90 G1

Product name	Ordering code	Colour temperature [K]	Current nominal If nom [mA]	Luminous flux* ϕ [lm]	Voltage* Vf [V]	Power* P [W]	Efficacy* [lm/W]	Current maximum If max [mA]
RecLED 62x62mm 1600lm 930 36V G1	1010 117 96146	3000	360	1590	35	13	125	480
RecLED 62x62mm 1600lm 940 36V G1	1010 117 96246	4000	360	1658	35	13	130	480

*At nominal current and T_p
Tolerance range for optical and electrical $\pm 10\%$

Temperature & humidity

Specification item	Unit	Value
T _p	[°C]	45
T _p rated	[°C]	65
T _c	[°C]	85
Relative humidity (non-condensing)	[%]	5 ... 85
Storage ambient temperature	[°C]	-25 ... +85
Storage relative humidity (non-condensing)	[%]	5 ... 85

T_p - Temperature related to the performance parameters of the LED modules
T_p rated - Maximum operating temperature to which the rated performance characteristics are declared
T_c - Highest permissible value for safe operation

Technical data

Specification item	Unit	Value
Classification acc. to IEC 62031		built-in
Energy Efficiency Class		A++
Working voltage		60
Beam angle	[deg]	120
Initial color consistency	[SDCM]	3
Initial color coordinates		Acc. to CIE 1931
Photobiological safety		RG1 unlimited

Rectangular LED modules 62x62mm DAISY-2x2

Certificates & standards

Specification item	Compliant
ENEC	No
CE	Yes
RoHS	Yes
REACH	Yes
Zhaga	No
IP rating	No IP rating

Lumen maintenance

LinLED CRI 80

Forward current	Tp temp.	L70 [h]		L80 [h]		L90 [h]	
		B50	B10	B50	B10	B50	B10
If nom	45°C	>72 000	>72 000	>72 000	>72 000	39 000	36 000
	65°C	>72 000	>72 000	>72 000	65 000	31 000	28 000
	85°C	>72 000	>72 000	>72 000	57 000	26 000	24 000
If max	45°C	>72 000	>72 000	>72 000	>72 000	36 000	34 000
	65°C	>72 000	>72 000	>72 000	62 000	29 000	28 000
	85°C	>72 000	>72 000	>72 000	54 000	25 000	23 000

reported data based on LM80 LED data (10 000h)

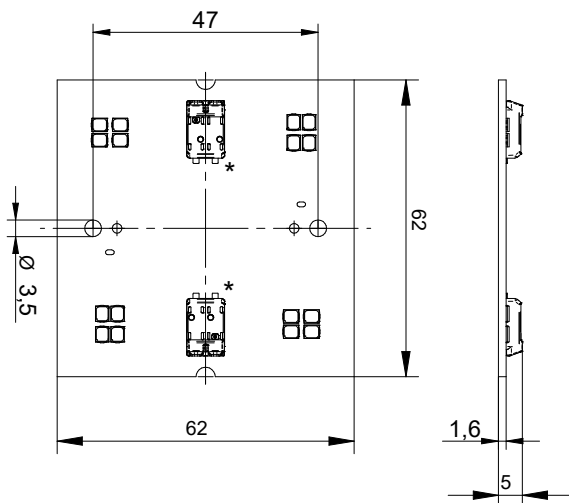
LinLED CRI 90

Forward current	Tp temp.	L70 [h]		L80 [h]		L90 [h]	
		B50	B10	B50	B10	B50	B10
If nom	45°C	>72 000	>72 000	>72 000	>72 000	38 000	35 000
	65°C	>72 000	>72 000	>72 000	65 000	30 000	28 000
	85°C	>72 000	>72 000	>72 000	56 000	26 000	23 000
If max	45°C	>72 000	>72 000	>72 000	>72 000	36 000	34 000
	65°C	>72 000	>72 000	>72 000	62 000	29 000	28 000
	85°C	>72 000	>72 000	>72 000	54 000	25 000	23 000

reported data based on LM80 LED data (10 000h)

Dimensions

Product name	Ordering code	Connectors (*)
RecLED 62x62mm 1600lm 827-865 36V G1	1010 117 66246	2P
RecLED 62x62mm 1600lm 830 36V G1	1010 117 66346	1P
RecLED 62x62mm 1600lm 840 36V G1	1010 117 66446	1P
RecLED 62x62mm 1600lm 930 36V G1	1010 117 96146	1P
RecLED 62x62mm 1600lm 940 36V G1	1010 117 96246	1P



Mounting

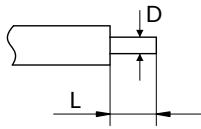
LED Modules cannot be exposed to tensile or compressive stresses. For this purpose it is necessary that the modules are assembled to a flat surface by only rounded head screws. Additionally plastic flat washer should be used to ensure creepeage distance between screw's head and surface of the pcb. Max. torque for fixing: 0,5Nm.

LED modules are sensitive to electrostatic discharge (ESD). Follow safety regulations according to IEC 61340-5-1.

Rectangular LED modules 62x62mm DAISY-2x2

Wiring

Wire cross section and strip length:



D - wire cross section (solid and flexible wires)	Min	Max
	0.2mm ²	0.75mm ²
	AWG 24	AWG 18

L - strip length	Min	Max
	8mm	9mm

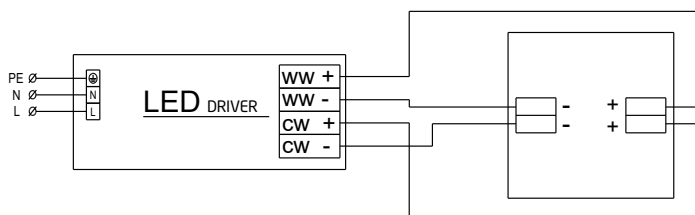
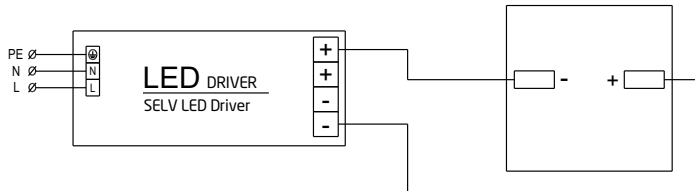
Opening for the release of wires from the top with release pin Electroterminal art. 881 167 884:



Connections

Max number of modules	Unit	Series	Parallel
RecLED 62x62mm...	[pcs]	-	1

Wiring for parallel connection system



To prevent irregular luminous intensity in parallel connection use only LED modules from the same V-code group. V-code (e.g. "A", "B", "AB") is printed on the LED module and box label. Naming is not adequate to efficacy or luminous flux.

Ordering codes

Product name	Ordering code	Pieces per box	Box dimensions [mm]
RecLED 62x62mm 1600lm 827-865 36V G1	1010 117 66246	20	158 x 75 x 61
RecLED 62x62mm 1600lm 830 36V G1	1010 117 66346	20	158 x 75 x 61
RecLED 62x62mm 1600lm 840 36V G1	1010 117 66446	20	158 x 75 x 61
RecLED 62x62mm 1600lm 930 36V G1	1010 117 96146	20	158 x 75 x 61
RecLED 62x62mm 1600lm 940 36V G1	1010 117 96246	20	158 x 75 x 61