

Rectangular LED modules 62x62mm DAISY-2x2

A rectangular solution for premium class indoor lighting. Optimized for LEDiL's DAISY-2x2 optics.

Product description

- Long life-time
- Built-in, constant current LED module
- Re-workable push-in terminals enabling easy connection
- Compliance and approval: CE
- Parallel system, also recognized as a low voltage system - SELV
- Available CCT from 2700K to 6500K and CRI 80, 90



RecLED CRI 80 G1

| Product name | Ordering code | Colour temperature [K] | Current nominal If nom [mA] | Luminous flux ¹ φ [lm] | Useful luminous flux ² [lm] | Voltage ¹ Vf [V] | Power ¹ P [W] | Efficacy ¹ [lm/W] | Current minimum If min ³ [mA] | Current maximum If max [mA] | Energy Efficiency Class |
|--------------------------------------|----------------|------------------------|-----------------------------|-----------------------------------|--|-----------------------------|--------------------------|------------------------------|--|-----------------------------|-------------------------|
| RecLED 62x62mm 1600lm 827-865 36V G1 | 1010 117 66246 | 2700 | 160 | 762 | 782 | 35 | 5.7 | 134 | 20 | 240 | E |
| | | 6500 | 160 | 824 | 846 | 35 | 5.7 | 145 | 20 | 240 | |

RecLED CRI 80 G2

| Product name | Ordering code | Colour temperature [K] | Current nominal If nom [mA] | Luminous flux ¹ φ [lm] | Useful luminous flux ² [lm] | Voltage ¹ Vf [V] | Power ¹ P [W] | Efficacy ¹ [lm/W] | Current minimum If min ³ [mA] | Current maximum If max [mA] | Energy Efficiency Class |
|----------------------------------|----------------|------------------------|-----------------------------|-----------------------------------|--|-----------------------------|--------------------------|------------------------------|--|-----------------------------|-------------------------|
| RecLED 62x62mm 1600lm 830 36V G2 | 1010 127 53646 | 3000 | 310 | 1574 | 1634 | 35 | 11 | 144 | 40 | 460 | D |
| RecLED 62x62mm 1600lm 840 36V G2 | 1010 127 50346 | 4000 | 310 | 1693 | 1757 | 35 | 11 | 155 | 40 | 460 | D |

RecLED CRI 90 G2

| Product name | Ordering code | Colour temperature [K] | Current nominal If nom [mA] | Luminous flux ¹ φ [lm] | Useful luminous flux ² [lm] | Voltage ¹ Vf [V] | Power ¹ P [W] | Efficacy ¹ [lm/W] | Current minimum If min ³ [mA] | Current maximum If max [mA] | Energy Efficiency Class |
|----------------------------------|----------------|------------------------|-----------------------------|-----------------------------------|--|-----------------------------|--------------------------|------------------------------|--|-----------------------------|-------------------------|
| RecLED 62x62mm 1600lm 927 36V G2 | 1010 127 33846 | 2700 | 400 | 1465 | 1539 | 36 | 14 | 102 | 40 | 460 | F |
| RecLED 62x62mm 1600lm 930 36V G2 | 1010 127 50446 | 3000 | 370 | 1551 | 1610 | 36 | 13 | 117 | 40 | 460 | E |
| RecLED 62x62mm 1600lm 940 36V G2 | 1010 127 50546 | 4000 | 370 | 1689 | 1753 | 36 | 13 | 127 | 40 | 460 | E |

¹At nominal current and T_p

²At nominal current and 25°C

³It is recommended not to operate below minimum current in order to avoid un-even brightness

Tolerance range for optical and electrical ±10%

Temperature & humidity

| Specification item | Unit | Value |
|--|------|-------------|
| T _p | [°C] | 45 |
| T _{p rated} | [°C] | 65 |
| T _c | [°C] | 85 |
| Relative humidity (non-condensing) | [%] | 5 ... 85 |
| Storage ambient temperature | [°C] | -25 ... +85 |
| Storage relative humidity (non-condensing) | [%] | 5 ... 85 |

T_p - Temperature related to the performance parameters of the LED modules

T_{p rated} - Maximum operating temperature to which the rated performance characteristics are declared

T_c - Highest permissible value for safe operation

Technical data

| Specification item | Unit | Value |
|----------------------------------|--------|---------------|
| Classification acc. to IEC 62031 | | built-in |
| Working voltage | | 60 |
| Beam angle | [deg] | 120 |
| Initial color consistency | [SDCM] | 3 |
| Photobiological safety | | RG1 unlimited |

Rectangular LED modules 62x62mm DAISY-2x2

Color coordinates

According to CIE 1931

| Specification item | CIE _x | CIE _y |
|--------------------|------------------|------------------|
| 2700K | 0.4578 | 0.4101 |
| 3000K | 0.4338 | 0.4030 |
| 4000K | 0.3818 | 0.3797 |
| 6500K | 0.3123 | 0.3282 |

Certificates & standards

| Specification item | Compliant |
|--------------------|--------------|
| ENEC | No |
| CE | Yes |
| RoHS | Yes |
| REACH | Yes |
| Zhaga | No |
| IP rating | No IP rating |

Lumen maintenance

LinLED CRI 80

LinLED CRI 90

| Forward current | T _p temp. | L70 [h] | | L80 [h] | | L90 [h] | |
|-----------------|----------------------|---------|---------|---------|---------|---------|--------|
| | | B50 | B10 | B50 | B10 | B50 | B10 |
| If nom | 45°C | >72 000 | >72 000 | >72 000 | >72 000 | 39 000 | 36 000 |
| | 65°C | >72 000 | >72 000 | >72 000 | 65 000 | 31 000 | 28 000 |
| | 85°C | >72 000 | >72 000 | >72 000 | 57 000 | 26 000 | 24 000 |
| If max | 45°C | >72 000 | >72 000 | >72 000 | >72 000 | 36 000 | 34 000 |
| | 65°C | >72 000 | >72 000 | >72 000 | 62 000 | 29 000 | 28 000 |
| | 85°C | >72 000 | >72 000 | >72 000 | 54 000 | 25 000 | 23 000 |

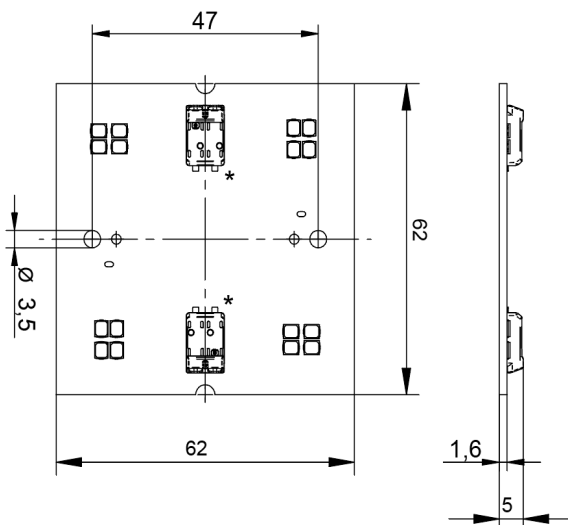
reported data based on LM80 LED data (10 000h)

| Forward current | T _p temp. | L70 [h] | | L80 [h] | | L90 [h] | |
|-----------------|----------------------|---------|---------|---------|---------|---------|--------|
| | | B50 | B10 | B50 | B10 | B50 | B10 |
| If nom | 45°C | >72 000 | >72 000 | >72 000 | >72 000 | 38 000 | 35 000 |
| | 65°C | >72 000 | >72 000 | >72 000 | 65 000 | 30 000 | 28 000 |
| | 85°C | >72 000 | >72 000 | >72 000 | 56 000 | 26 000 | 23 000 |
| If max | 45°C | >72 000 | >72 000 | >72 000 | >72 000 | 36 000 | 34 000 |
| | 65°C | >72 000 | >72 000 | >72 000 | 62 000 | 29 000 | 28 000 |
| | 85°C | >72 000 | >72 000 | >72 000 | 54 000 | 25 000 | 23 000 |

reported data based on LM80 LED data (10 000h)

Dimensions

| Product name | Ordering code | Connectors (*) |
|--------------------------------------|----------------|----------------|
| RecLED 62x62mm 1600lm 827-865 36V G1 | 1010 117 66246 | 2P |
| RecLED 62x62mm 1600lm 830 36V G2 | 1010 127 53646 | 1P |
| RecLED 62x62mm 1600lm 840 36V G2 | 1010 117 50346 | 1P |
| RecLED 62x62mm 1600lm 927 36V G2 | 1010 127 33846 | 1P |
| RecLED 62x62mm 1600lm 930 36V G2 | 1010 127 50446 | 1P |
| RecLED 62x62mm 1600lm 940 36V G2 | 1010 127 50546 | 1P |



Rectangular LED modules 62x62mm DAISY-2x2

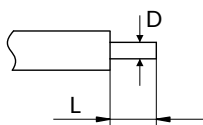
Mounting

LED Modules cannot be exposed to tensile or compressive stresses. For this purpose it is necessary that the modules are assembled to a flat surface by only rounded head screws. Additionally plastic flat washer should be used to ensure creepage distance between screw's head and surface of the pcb. Max. torque for fixing: 0,5Nm.

LED modules are sensitive to electrostatic discharge (ESD). Follow safety regulations according to IEC 61340-5-1.

Wiring

Wire cross section and strip length:



| D - wire cross section (solid and flexible wires) | Min | Max |
|--|--------------------|---------------------|
| | 0.2mm ² | 0.75mm ² |
| | AWG 24 | AWG 18 |

| L - strip length | Min | Max |
|------------------|-----|-----|
| | 8mm | 9mm |

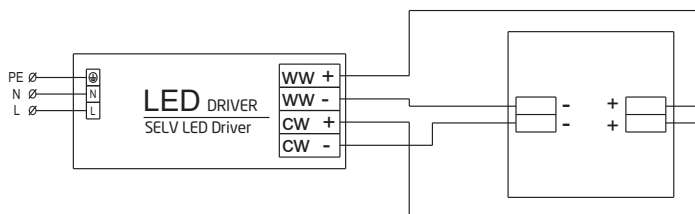
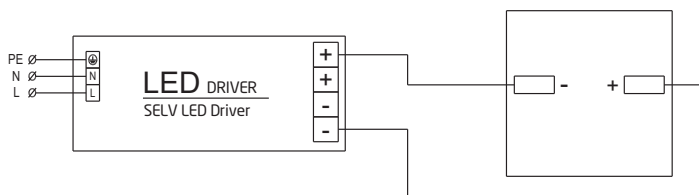
Opening for the release of wires from the top with release pin Electroterminal art. 881 167 884:



Connections

| Max number of modules | Unit | Series | Parallel |
|-----------------------|-------|--------|----------|
| RecLED 62x62mm... | [pcs] | - | 6 |

Wiring for parallel connection system



To prevent irregular luminous intensity in parallel connection use only LED modules from the same V-code group. V-code (e.g. "A", "B", "AB") is printed on the LED module and box label. Naming is not adequate to efficacy or luminous flux.

Rectangular LED modules 62x62mm DAISY-2x2

Energy Label / EPREL database

To obtain Energy Label for this product visit <https://eprel.ec.europa.eu/> and enter model identifier

Model identifier consists of 10 digits XXXX XXX XXX. It is printed directly on the LED module or on product label. This is the number you can see in EPREL database.

Ordering code consist of 12 digits XXXX XXX XXX46. Additional last two digits means packaging of the product.

Ordering codes

| Product name | Ordering code | Pieces per box | Box dimensions [mm] |
|--------------------------------------|----------------|----------------|---------------------|
| RecLED 62x62mm 1600lm 827-865 36V G1 | 1010 117 66246 | 20 | 148 x 76 x 63 |
| RecLED 62x62mm 1600lm 830 36V G2 | 1010 127 53646 | 20 | 148 x 76 x 63 |
| RecLED 62x62mm 1600lm 840 36V G2 | 1010 127 50346 | 20 | 148 x 76 x 63 |
| RecLED 62x62mm 1600lm 927 36V G2 | 1010 127 33846 | 20 | 148 x 76 x 63 |
| RecLED 62x62mm 1600lm 930 36V G2 | 1010 127 50446 | 20 | 148 x 76 x 63 |
| RecLED 62x62mm 1600lm 940 36V G2 | 1010 127 50546 | 20 | 148 x 76 x 63 |