

Rectangular LED modules 62x62mm DAISY-2x2

A rectangular solution for premium class indoor lighting. Optimized for LEDiL's DAISY-2x2 optics.

Product description

- Long life-time
- Built-in, constant current LED module
- Re-workable push-in terminals enabling easy connection
- Compliance and approval: CE
- Parallel system, also recognized as a low voltage system - SELV
- Available CCT from 2700K to 6500K and CRI 80, 90



RecLED CRI 80 G1

Product name	Ordering code	Colour temperature [K]	Current nominal If nom [mA]	Luminous flux ¹ φ [lm]	Useful luminous flux ² [lm]	Voltage ¹ Vf [V]	Power ¹ P [W]	Efficacy ¹ [lm/W]	Current minimum If min ³ [mA]	Current maximum If max [mA]	Energy Efficiency Class
RecLED 62x62mm 1600lm 827-865 36V DAISY-2X2 G1	1010 117 66246	2700	160	762	782	35	5.7	134	20	240	E
		6500	160	824	846	35	5.7	145	20	240	

RecLED CRI 80 G2

Product name	Ordering code	Colour temperature [K]	Current nominal If nom [mA]	Luminous flux ¹ φ [lm]	Useful luminous flux ² [lm]	Voltage ¹ Vf [V]	Power ¹ P [W]	Efficacy ¹ [lm/W]	Current minimum If min ³ [mA]	Current maximum If max [mA]	Energy Efficiency Class
RecLED 62x62mm 1600lm 830 36V DAISY-2X2 G2	1010 127 53646	3000	310	1574	1634	35	11	144	40	460	D
RecLED 62x62mm 1600lm 840 36V DAISY-2X2 G2	1010 127 50346	4000	310	1693	1757	35	11	155	40	460	D

RecLED CRI 90 G2

Product name	Ordering code	Colour temperature [K]	Current nominal If nom [mA]	Luminous flux ¹ φ [lm]	Useful luminous flux ² [lm]	Voltage ¹ Vf [V]	Power ¹ P [W]	Efficacy ¹ [lm/W]	Current minimum If min ³ [mA]	Current maximum If max [mA]	Energy Efficiency Class
RecLED 62x62mm 1600lm 927 36V DAISY-2X2 G2	1010 127 33846	2700	400	1465	1539	36	14	102	40	460	F
RecLED 62x62mm 1600lm 930 36V DAISY-2X2 G2	1010 127 50446	3000	370	1551	1610	36	13	117	40	460	E
RecLED 62x62mm 1600lm 940 36V DAISY-2X2 G2	1010 127 50546	4000	370	1689	1753	36	13	127	40	460	E

¹At nominal current and T_p

²At nominal current and 25°C

³It is recommended not to operate below minimum current in order to avoid un-even brightness

Tolerance range for optical and electrical ±10%

Temperature & humidity

Specification item	Unit	Value
T _p	[°C]	45
T _p rated	[°C]	65
T _c	[°C]	85
Relative humidity (non-condensing)	[%]	5 ... 85
Storage ambient temperature	[°C]	-25 ... +85
Storage relative humidity (non-condensing)	[%]	5 ... 85

T_p - Temperature related to the performance parameters of the LED modules

T_p rated - Maximum operating temperature to which the rated performance characteristics are declared

T_c - Highest permissible value for safe operation

Technical data

Specification item	Unit	Value
Classification acc. to IEC 62031		built-in
Working voltage		60
Beam angle	[deg]	120
Initial color consistency	[SDCM]	3
Photobiological safety		RG1 unlimited

Rectangular LED modules 62x62mm DAISY-2x2

Color coordinates

According to CIE 1931

Specification item	CIE _x	CIE _y
2700K	0.4578	0.4101
3000K	0.4338	0.4030
4000K	0.3818	0.3797
6500K	0.3123	0.3282

Certificates & standards

Specification item	Compliant
ENEC	No
CE	Yes
RoHS	Yes
REACH	Yes
Zhaga	No
IP rating	No IP rating

Lumen maintenance

LinLED CRI 80

Forward current	T _p temp.	L70 [h]		L80 [h]		L90 [h]	
		B50	B10	B50	B10	B50	B10
If nom	45°C	>72 000	>72 000	>72 000	>72 000	39 000	36 000
	65°C	>72 000	>72 000	>72 000	65 000	31 000	28 000
	85°C	>72 000	>72 000	>72 000	57 000	26 000	24 000
If max	45°C	>72 000	>72 000	>72 000	>72 000	36 000	34 000
	65°C	>72 000	>72 000	>72 000	62 000	29 000	28 000
	85°C	>72 000	>72 000	>72 000	54 000	25 000	23 000

reported data based on LM80 LED data (10 000h)

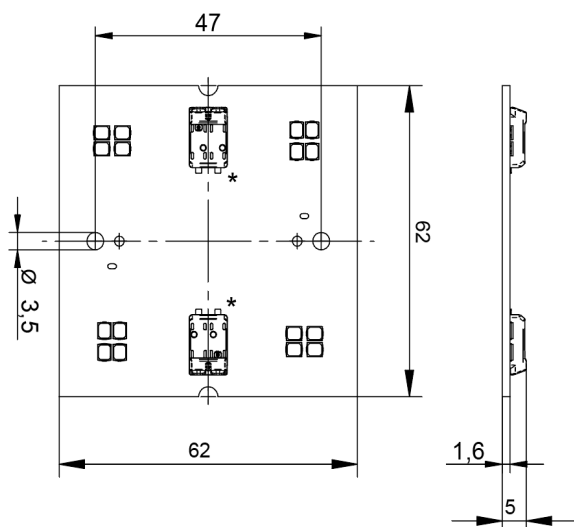
LinLED CRI 90

Forward current	T _p temp.	L70 [h]		L80 [h]		L90 [h]	
		B50	B10	B50	B10	B50	B10
If nom	45°C	>72 000	>72 000	>72 000	>72 000	38 000	35 000
	65°C	>72 000	>72 000	>72 000	65 000	30 000	28 000
	85°C	>72 000	>72 000	>72 000	56 000	26 000	23 000
If max	45°C	>72 000	>72 000	>72 000	>72 000	36 000	34 000
	65°C	>72 000	>72 000	>72 000	62 000	29 000	28 000
	85°C	>72 000	>72 000	>72 000	54 000	25 000	23 000

reported data based on LM80 LED data (10 000h)

Dimensions

Product name	Ordering code	Connectors (*)
RecLED 62x62mm 1600lm 827-865 36V DAISY-2X2 G1	1010 117 66246	2P
RecLED 62x62mm 1600lm 830 36V DAISY-2X2 G2	1010 127 53646	1P
RecLED 62x62mm 1600lm 840 36V DAISY-2X2 G2	1010 117 50346	1P
RecLED 62x62mm 1600lm 927 36V DAISY-2X2 G2	1010 127 33846	1P
RecLED 62x62mm 1600lm 930 36V DAISY-2X2 G2	1010 127 50446	1P
RecLED 62x62mm 1600lm 940 36V DAISY-2X2 G2	1010 127 50546	1P



Rectangular LED modules 62x62mm DAISY-2x2

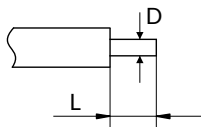
Mounting

LED Modules cannot be exposed to tensile or compressive stresses. For this purpose it is necessary that the modules are assembled to a flat surface by only rounded head screws. Additionally plastic flat washer should be used to ensure creepage distance between screw's head and surface of the pcb. Max. torque for fixing: 0,5Nm.

LED modules are sensitive to electrostatic discharge (ESD). Follow safety regulations according to IEC 61340-5-1.

Wiring

Wire cross section and strip length:



D - wire cross section (solid and flexible wires)	Min	Max
	0.2mm ²	0.75mm ²
	AWG 24	AWG 18

L - strip length	Min	Max
	8mm	9mm

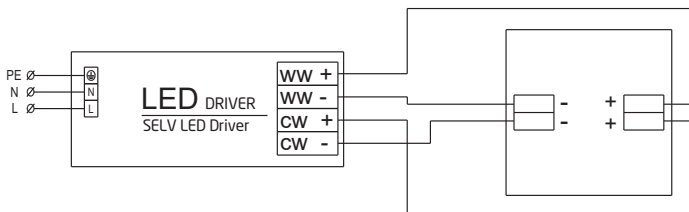
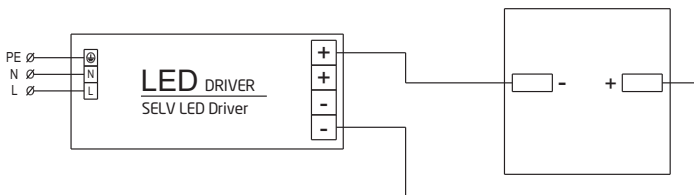
Opening for the release of wires from the top with release pin Electroterminal art. 881 167 884:



Connections

Max number of modules	Unit	Series	Parallel
RecLED 62x62mm...	[pcs]	-	6

Wiring for parallel connection system



To prevent irregular luminous intensity in parallel connection use only LED modules from the same V-code group. V-code (e.g. "A", "B", "AB") is printed on the LED module and box label. Naming is not adequate to efficacy or luminous flux.

Rectangular LED modules 62x62mm DAISY-2x2

Energy Label / EPREL database

To obtain Energy Label for this product visit <https://eprel.ec.europa.eu/> and enter model identifier

Model identifier consists of 10 digits XXXX XXX XXX. It is printed directly on the LED module or on product label. This is the number you can see in EPREL database.

Ordering code consist of 12 digits XXXX XXX XXX46. Additional last two digits means packaging of the product.

Ordering codes

Product name	Ordering code	Pieces per box	Box dimensions [mm]
RecLED 62x62mm 1600lm 827-865 36V DAISY-2X2 G1	1010 117 66246	20	148 x 76 x 63
RecLED 62x62mm 1600lm 830 36V DAISY-2X2 G2	1010 127 53646	20	148 x 76 x 63
RecLED 62x62mm 1600lm 840 36V DAISY-2X2 G2	1010 127 50346	20	148 x 76 x 63
RecLED 62x62mm 1600lm 927 36V DAISY-2X2 G2	1010 127 33846	20	148 x 76 x 63
RecLED 62x62mm 1600lm 930 36V DAISY-2X2 G2	1010 127 50446	20	148 x 76 x 63
RecLED 62x62mm 1600lm 940 36V DAISY-2X2 G2	1010 127 50546	20	148 x 76 x 63