

Rectangular LED modules 250x250mm

Product description

- Long life-time
- Built-in, constant current LED module
- Re-workable push-in terminals enabling easy connection
- Compliance and approval: CE, ENEC
- Other CCT and CRI on request



RecLED CRI 80 CJ G4

Product name	Ordering code	Colour temperature [K]	Current nominal If nom [mA]	Luminous flux ¹ φ [lm]	Useful luminous flux ² [lm]	Voltage ¹ Vf [V]	Power ¹ P [W]	Efficacy ¹ [lm/W]	Current minimum If min ³ [mA]	Current maximum If max [mA]	Energy Efficiency Class
RecLED 250x250mm 1250lm 830 24V CJ G4	1010 147 56146	3000	300	1245	1276	21	6.4	196	80	2000	C
RecLED 250x250mm 1250lm 840 24V CJ G4	1010 147 56246	4000	300	1294	1327	21	6.4	204	80	2000	B

RecLED CRI 80 CN G3

Product name	Ordering code	Colour temperature [K]	Current nominal If nom [mA]	Luminous flux ¹ φ [lm]	Useful luminous flux ² [lm]	Voltage ¹ Vf [V]	Power ¹ P [W]	Efficacy ¹ [lm/W]	Current minimum If min ³ [mA]	Current maximum If max [mA]	Energy Efficiency Class
RecLED 250x250mm 1250lm 830 24V CN G3	1010 147 55946	3000	310	1232	1275	21	6.6	187	80	1600	C
RecLED 250x250mm 1250lm 840 24V CN G3	1010 147 56046	4000	310	1299	1345	21	6.6	197	80	1600	B

RecLED CRI 90 EH1.1 G3

Product name	Ordering code	Colour temperature [K]	Current nominal If nom [mA]	Luminous flux ¹ φ [lm]	Useful luminous flux ² [lm]	Voltage ¹ Vf [V]	Power ¹ P [W]	Efficacy ¹ [lm/W]	Current minimum If min ³ [mA]	Current maximum If max [mA]	Energy Efficiency Class
RecLED 250x250mm 1250lm 927 24V EH1.1 G3	1010 127 06246	2700	320	1225	1262	22	7.1	173	80	1200	C
RecLED 250x250mm 1250lm 930 24V EH1.1 G3	1010 127 06346	3000	320	1225	1262	22	7.1	173	80	1200	C
RecLED 250x250mm 1250lm 940 24V EH1.1 G3	1010 127 06446	4000	320	1301	1341	22	7.1	184	80	1200	C

¹At nominal current and T_p

²At nominal current and 25°C

³It is recommended not to operate below minimum current in order to avoid un-even brightness

Tolerance range for optical and electrical ±10%

Temperature & humidity

Specification item	Unit	Value
T _p	[°C]	45
T _p rated	[°C]	65
T _c	[°C]	85
Relative humidity (non-condensing)	[%]	5 ... 85
Storage ambient temperature	[°C]	-25 ... +85
Storage relative humidity (non-condensing)	[%]	5 ... 85

T_p - Temperature related to the performance parameters of the LED modules

T_p rated - Maximum operating temperature to which the rated performance characteristics are declared

T_c - Highest permissible value for safe operation

Technical data

Specification item	Unit	Value
Classification acc. to IEC 62031		built-in
Working voltage	[Vdc]	350
Beam angle	[deg]	120
Initial color consistency	[SDCM]	3
Photobiological safety		RG1 unlimited

Rectangular LED modules 250x250mm

Color coordinates

According to CIE 1931

Specification item	CIE _x	CIE _y
2700K	0.4578	0.4101
3000K	0.4338	0.4030
4000K	0.3818	0.3797
6500K	0.3123	0.3282

Certificates & standards

Specification item	Compliant
ENEC	Yes
CE	Yes
RoHS	Yes
REACH	Yes
IP rating	No IP rating

Lumen maintenance

for CJ G4 & CN G3

Forward current	Tp temp.	L70 [h]		L80 [h]		L90 [h]	
		B50	B10	B50	B10	B50	B10
If nom	45°C	>102 000	>102 000	>102 000	>102 000	>102 000	>102 000
	55°C	>102 000	>102 000	>102 000	>102 000	>102 000	>102 000
	65°C	>102 000	>102 000	>102 000	>102 000	89 000	88 000
	75°C	>102 000	>102 000	>102 000	>102 000	75 000	74 000
If max	85°C	>102 000	>102 000	>102 000	>102 000	64 000	63 000
	45°C	>102 000	>102 000	>102 000	>102 000	>102 000	>102 000
	55°C	>102 000	>102 000	>102 000	>102 000	93 000	92 000
	65°C	>102 000	>102 000	>102 000	>102 000	79 000	78 000
If max	75°C	>102 000	>102 000	>102 000	>102 000	67 000	66 000
	85°C	>102 000	>102 000	>102 000	>102 000	57 000	56 000

Reported data based on LM80 LED data (17 000h)

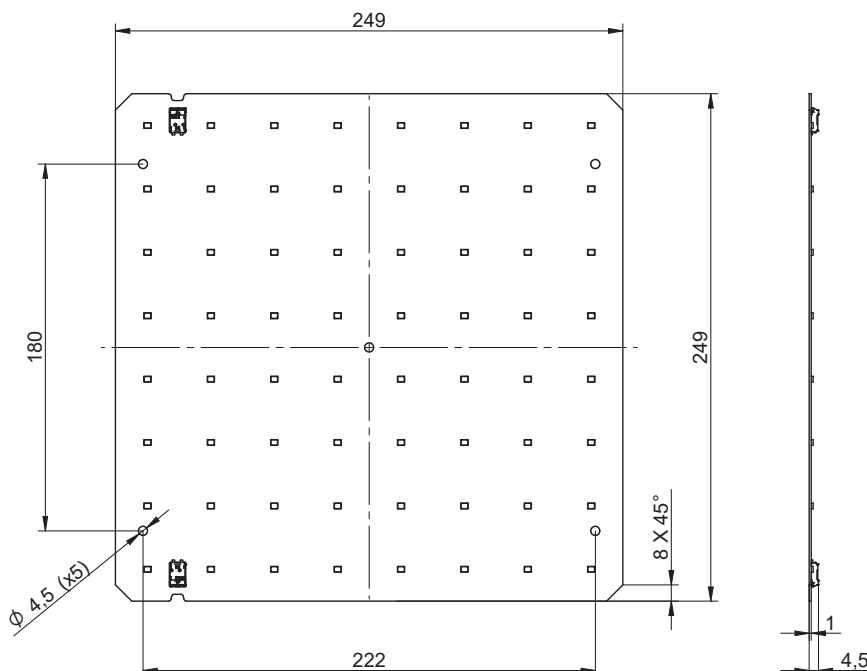
for EH1.1 G3

Forward current	Tp temp.	L70 [h]		L80 [h]		L90 [h]	
		B50	B10	B50	B10	B50	B10
If nom	45°C	>72 000	>72 000	>72 000	>72 000	>72 000	>72 000
	55°C	>72 000	>72 000	>72 000	>72 000	>72 000	>72 000
	65°C	>72 000	>72 000	>72 000	>72 000	>72 000	>72 000
	75°C	>72 000	>72 000	>72 000	>72 000	>72 000	>72 000
If max	85°C	>72 000	>72 000	>72 000	>72 000	>72 000	>72 000
	45°C	>72 000	>72 000	67 000	62 000	30 000	29 000
	55°C	>72 000	>72 000	66 000	61 000	30 000	28 000
	65°C	>72 000	>72 000	65 000	60 000	29 000	27 000
If max	75°C	>72 000	>72 000	65 000	59 000	29 000	26 000
	85°C	>72 000	>72 000	64 000	58 000	28 000	26 000

Calculated data based on LM80 LED data (12 000h)

Dimensions

RecLED 250x250mm



Rectangular LED modules 250x250mm

Mounting

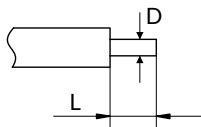
LED Modules cannot be exposed to tensile or compressive stresses. For this purpose it is necessary that the modules are assembled to a flat surface by only rounded head screws. Additionally plastic flat washer should be used to ensure creepage distance between screw's head and surface of the pcb. Max. torque for fixing: 0,5Nm.

LED modules are sensitive to electrostatic discharge (ESD). Follow safety regulations according to IEC 61340-5-1.

Protection against electric shock must be provided by the luminaire's enclosure.

Wiring

Wire cross section and strip length:



D - wire cross section (solid and flexible wires)	Min	Max
	0.2mm ²	0.75mm ²
	AWG 24	AWG 18

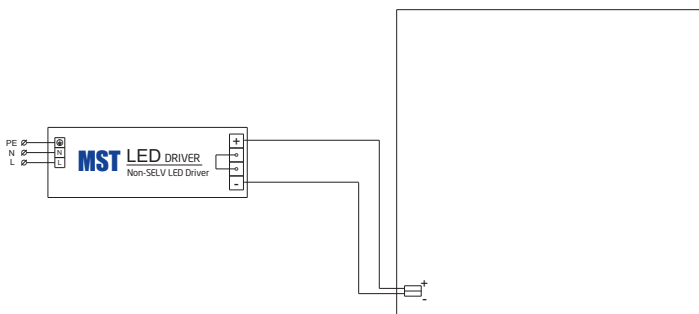
L - strip length	Min	Max
	8mm	9mm

Opening for the release of wires from the top with release pin Electroterminal art. 881 167 884:

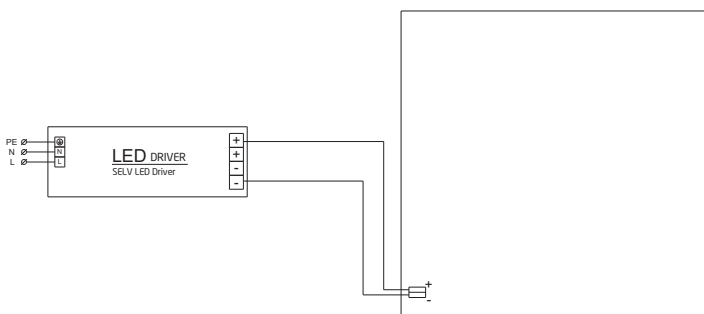


Connections

Wiring for series connection system



Wiring for parallel connection system



To prevent irregular luminous intensity in parallel connection use only LED modules from the same V-code group. V-code (e.g. "A", "B", "AB") is printed on the LED module and box label. Naming is not adequate to efficacy or luminous flux.

Rectangular LED modules 250x250mm

Energy Label / EPREL database

To obtain Energy Label for this product visit <https://eprel.ec.europa.eu/> and enter model identifier

Model identifier consists of 10 digits XXXX XXX XXX. It is printed directly on the LED module or on product label. This is the number you can see in EPREL database.

Ordering code consist of 12 digits XXXX XXX XXX46. Additional last two digits means packaging of the product.

Ordering codes

Product name	Ordering code	Pieces per box	Pieces per pallet	Box dimensions [mm]
RecLED 250x250mm 1250lm 830 24V CJ G4	1010 147 56146	22	1232	553 x 283 x 58
RecLED 250x250mm 1250lm 840 24V CJ G4	1010 147 56246	22	1232	553 x 283 x 58
RecLED 250x250mm 1250lm 830 24V CN G3	1010 147 55946	22	1232	553 x 283 x 58
RecLED 250x250mm 1250lm 840 24V CN G3	1010 147 56046	22	1232	553 x 283 x 58
RecLED 250x250mm 1250lm 927 24V EH1.1 G3	1010 127 06246	22	1232	553 x 283 x 58
RecLED 250x250mm 1250lm 930 24V EH1.1 G3	1010 127 06346	22	1232	553 x 283 x 58
RecLED 250x250mm 1250lm 940 24V EH1.1 G3	1010 127 06446	22	1232	553 x 283 x 58