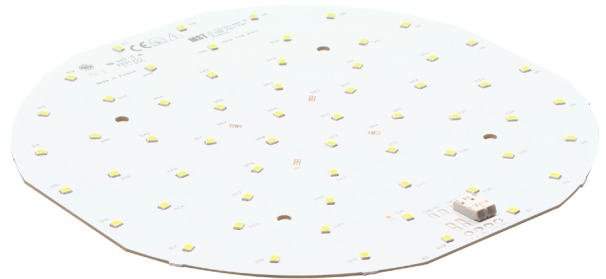


Round LED modules 190mm

Product description

- Long life-time
- Built-in, constant current LED module
- Re-workable push-in terminals enabling easy connection
- Compliance and approval: CE, ENEC
- Available CCT from 2700K to 6500K and CRI 80, 90



RdLED CRI 80 Optimum G2

Product name	Ordering code	Colour temperature [K]	Current nominal If nom [mA]	Luminous flux* φ [lm]	Voltage* Vf [V]	Power* P [W]	Efficacy* [lm/W]	Current maximum If max [mA]
RdLED 190mm 1500lm 830 36V EMG Opt G2	1010 117 44646	3000	250	1450	33	8.3	174	750
Emergency light			320	151	2.8	0.9	169	600
RdLED 190mm 1500lm 840 36V EMG Opt G2	1010 117 44746	4000	250	1508	33	8.3	181	750
Emergency light			320	157	2.8	0.9	172	600

*At nominal current and T_p
Tolerance range for optical and electrical ±10%

Temperature & humidity

Specification item	Unit	Value
T _p	[°C]	45
T _p rated	[°C]	65
T _c	[°C]	85
Relative humidity (non-condensing)	[%]	5 ... 85
Storage ambient temperature	[°C]	-25 ... +85
Storage relative humidity (non-condensing)	[%]	5 ... 85

T_p - Temperature related to the performance parameters of the LED modules
T_p rated - Maximum operating temperature to which the rated performance characteristics are declared
T_c - Highest permissible value for safe operation

Technical data

Specification item	Unit	Value
Classification acc. to IEC 62031		built-in
Energy Efficiency Class		A++
Working voltage	[Vdc]	350
Beam angle	[deg]	120
Initial color consistency	[SDCM]	3
Initial color coordinates		Acc. to CIE 1931
Photobiological safety		RG1 unlimited

Certificates & standards

Specification item	Compliant
ENEC	Yes
CE	Yes
RoHS	Yes
REACH	Yes
Zhaga	No
IP rating	No IP rating

Round LED modules 190mm

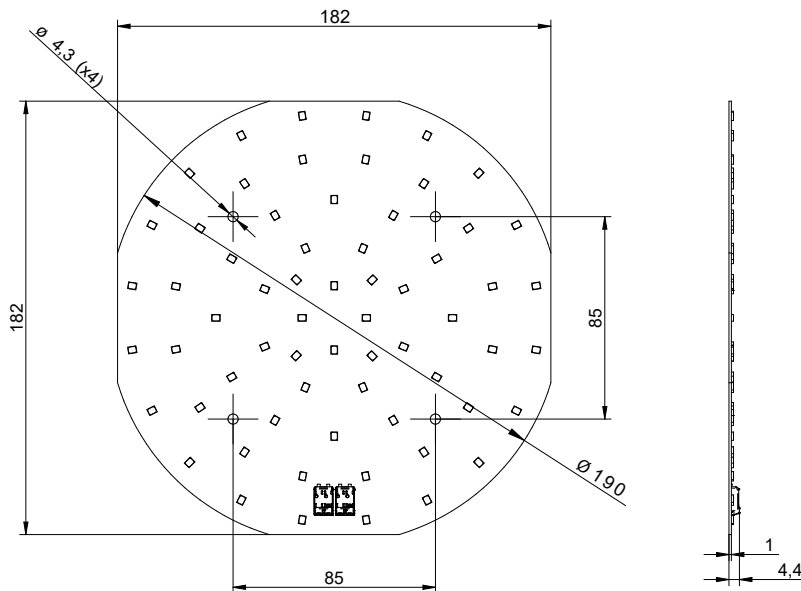
Lumen maintenance

RdLED CRI 80

Forward current	Tp temp.	L70 [h]		L80 [h]		L90 [h]	
		B50	B10	B50	B10	B50	B10
If nom	45°C	>102 000	>102 000	>102 000	>102 000	76 000	66 000
	55°C	>102 000	>102 000	>102 000	>102 000	76 000	66 000
	65°C	>102 000	>102 000	>102 000	>102 000	74 000	66 000
	75°C	>102 000	>102 000	>102 000	>102 000	74 000	65 000
	85°C	>102 000	>102 000	>102 000	>102 000	73 000	64 000
If max	45°C	>72 000	>72 000	>72 000	>72 000	51 000	39 000
	55°C	>72 000	>72 000	>72 000	>72 000	51 000	39 000
	65°C	>72 000	>72 000	>72 000	>72 000	48 000	37 000
	75°C	>72 000	>72 000	>72 000	>72 000	45 000	35 000
	85°C	>72 000	>72 000	>72 000	69 000	43 000	34 000

reported data based on LM80 LED data (@65mA 17000h / @160mA & 200mA 12000h)

Dimensions



Mounting

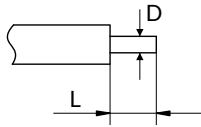
LED Modules cannot be exposed to tensile or compressive stresses. For this purpose it is necessary that the modules are assembled to a flat surface by only rounded head screws. Additionally plastic flat washer should be used to ensure creepage distance between screw's head and surface of the pcb. Max. torque for fixing: 0,5Nm.

LED modules are sensitive to electrostatic discharge (ESD). Follow safety regulations according to IEC 61340-5-1.

Round LED modules 190mm

Wiring

Wire cross section and strip length:



D - wire cross section (solid and flexible wires)	Min	Max
	0.2mm ²	0.75mm ²
	AWG 24	AWG 18

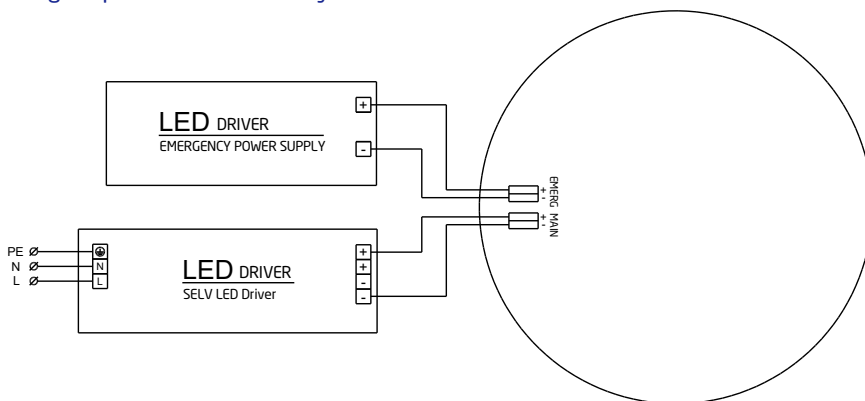
L - strip length	Min	Max
	8mm	9mm

Opening for the release of wires from the top
with release pin Electroterminal art. 881 167 884:



Connections

Wiring for parallel connection system



Ordering codes

Product name	Ordering code	Pieces per box	Pieces per pallet	Box dimensions [mm]
RdLED 190mm 1500lm 830 36V EMG Opt G2	1010 117 44646	20	2100	238 x 238 x 91
RdLED 190mm 1500lm 840 36V EMG Opt G2	1010 117 44746	20	2100	238 x 238 x 91