

## Rectangular LED modules 225x225mm

A linear solution for retail and industrial lighting. Optimized for LEDiL's CLAUDIA optics.

### Product description

- Long life-time
- Built-in, constant current LED module
- Re-workable push-in terminals enabling easy connection
- Compliance and approval: CE, ENEC
- Other CCT and CRI on request



### RecLED CRI 80 CJ G4

| Product name                                  | Ordering code  | Colour temperature [K] | Current nominal If nom [mA] | Luminous flux <sup>1</sup> φ [lm] | Useful luminous flux <sup>2</sup> [lm] | Voltage Vf [V] | Power <sup>1</sup> P [W] | Efficacy <sup>1</sup> [lm/W] | Current minimum If min <sup>3</sup> [mA] | Current maximum If max [mA] | Energy Efficiency Class |
|---|----------------|------------------------|-----------------------------|-----------------------------------|--|----------------|--------------------------|------------------------------|--|-----------------------------|-------------------------|
| RecLED 225x225mm 1500lm 830 30V EMG SSW CJ G4 | 1010 137 83846 | 3000                   | 285                         | 1480                              | 1517                                   | 26             | 7.5                      | 196                          | 80                                       | 2000                        | C                       |
| Emergency circuit                             |                |                        | 285                         | 146                               | 149                                    | 2.7            | 0.8                      | 189                          | 40                                       | 1000                        |                         |
| RecLED 225x225mm 1500lm 840 30V EMG SSW CJ G4 | 1010 137 47046 | 4000                   | 285                         | 1539                              | 1578                                   | 26             | 7.5                      | 204                          | 80                                       | 2000                        | B                       |
| Emergency circuit                             |                |                        | 285                         | 151                               | 155                                    | 2.7            | 0.8                      | 197                          | 40                                       | 1000                        |                         |

### RecLED CRI 80 CN G3

| Product name                                  | Ordering code  | Colour temperature [K] | Current nominal If nom [mA] | Luminous flux <sup>1</sup> φ [lm] | Useful luminous flux <sup>2</sup> [lm] | Voltage Vf [V] | Power <sup>1</sup> P [W] | Efficacy <sup>1</sup> [lm/W] | Current minimum If min <sup>3</sup> [mA] | Current maximum If max [mA] | Energy Efficiency Class |
|---|----------------|------------------------|-----------------------------|-----------------------------------|--|----------------|--------------------------|------------------------------|--|-----------------------------|-------------------------|
| RecLED 225x225mm 1500lm 830 30V EMG SSW CN G3 | 1010 147 36646 | 3000                   | 300                         | 1490                              | 1542                                   | 27             | 8.0                      | 187                          | 80                                       | 1600                        | C                       |
| Emergency circuit                             |                |                        | 300                         | 146                               | 152                                    | 2.7            | 0.8                      | 179                          | 40                                       | 800                         |                         |
| RecLED 225x225mm 1500lm 840 30V EMG SSW CN G3 | 1010 147 36746 | 4000                   | 300                         | 1572                              | 1627                                   | 27             | 8.0                      | 198                          | 80                                       | 1600                        | C                       |
| Emergency circuit                             |                |                        | 300                         | 155                               | 160                                    | 2.7            | 0.8                      | 189                          | 40                                       | 800                         |                         |

<sup>1</sup>At nominal current and T<sub>p</sub>

<sup>2</sup>At nominal current and 25°C

<sup>3</sup>It is recommended not to operate below minimum current in order to avoid un-even brightness

Tolerance range for optical and electrical ±10%

### Temperature & humidity

| Specification item                         | Unit | Value       |
|--|------|-------------|
| T <sub>p</sub>                             | [°C] | 45          |
| T <sub>p rated</sub>                       | [°C] | 65          |
| T <sub>c</sub>                             | [°C] | 85          |
| Relative humidity (non-condensing)         | [%]  | 5 ... 85    |
| Storage ambient temperature                | [°C] | -25 ... +85 |
| Storage relative humidity (non-condensing) | [%]  | 5 ... 85    |

T<sub>p</sub> - Temperature related to the performance parameters of the LED modules

T<sub>p rated</sub> - Maximum operating temperature to which the rated performance characteristics are declared

T<sub>c</sub> - Highest permissible value for safe operation

### Technical data

| Specification item               | Unit   | Value         |
|----------------------------------|--------|---------------|
| Classification acc. to IEC 62031 |        | built-in      |
| Working voltage                  | [Vdc]  | 60            |
| Beam angle                       | [deg]  | 120           |
| Initial color consistency        | [SDCM] | 3             |
| Photobiological safety           |        | RG1 unlimited |

## Rectangular LED modules 225x225mm

### Certificates & standards

| Specification item | Compliant    |
|--------------------|--------------|
| ENEC               | Yes          |
| CE                 | Yes          |
| RoHS               | Yes          |
| REACH              | Yes          |
| IP rating          | No IP rating |

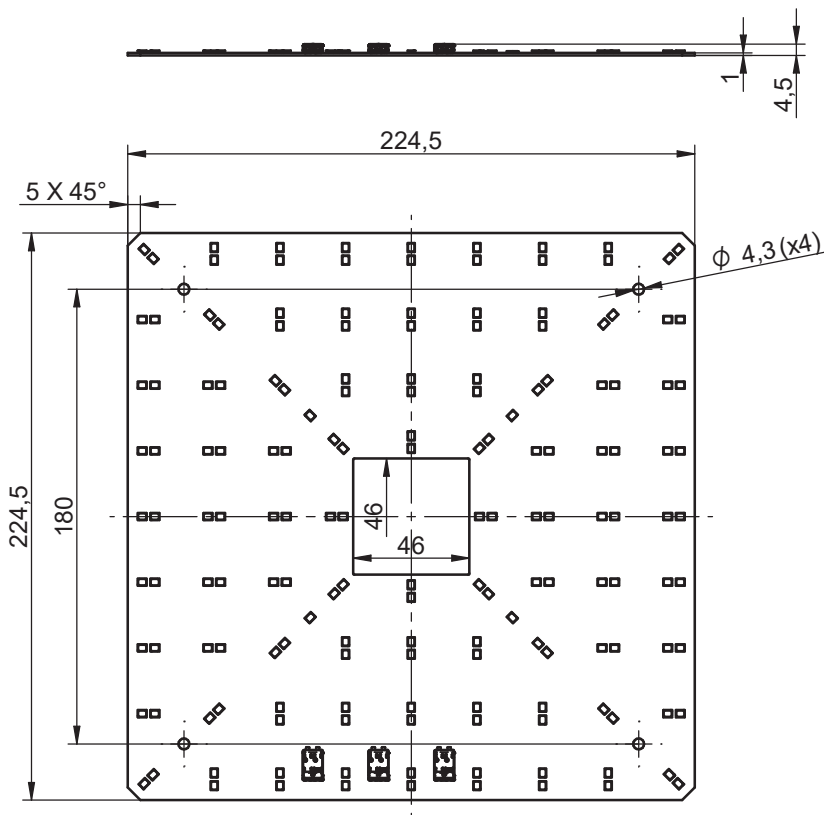
### Lumen maintenance

for CJ G4, CN G3

| Forward current | Tp temp. | L70 [h]  |          | L80 [h]  |          | L90 [h]  |          |
|-----------------|----------|----------|----------|----------|----------|----------|----------|
|                 |          | B50      | B10      | B50      | B10      | B50      | B10      |
| If nom          | 45°C     | >102 000 | >102 000 | >102 000 | >102 000 | >102 000 | >102 000 |
|                 | 55°C     | >102 000 | >102 000 | >102 000 | >102 000 | >102 000 | >102 000 |
|                 | 65°C     | >102 000 | >102 000 | >102 000 | >102 000 | 89 000   | 88 000   |
|                 | 75°C     | >102 000 | >102 000 | >102 000 | >102 000 | 75 000   | 74 000   |
|                 | 85°C     | >102 000 | >102 000 | >102 000 | >102 000 | 64 000   | 63 000   |
| If max          | 45°C     | >102 000 | >102 000 | >102 000 | >102 000 | >102 000 | >102 000 |
|                 | 55°C     | >102 000 | >102 000 | >102 000 | >102 000 | 93000    | 92000    |
|                 | 65°C     | >102 000 | >102 000 | >102 000 | >102 000 | 79 000   | 78 000   |
|                 | 75°C     | >102 000 | >102 000 | >102 000 | >102 000 | 67 000   | 66 000   |
|                 | 85°C     | >102 000 | >102 000 | >102 000 | >102 000 | 57 000   | 56 000   |

Reported data based on LM80 LED data (17 000h)

### Dimensions



## Rectangular LED modules 225x225mm

### Mounting

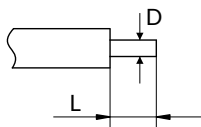
LED Modules cannot be exposed to tensile or compressive stresses. For this purpose it is necessary that the modules are assembled to a flat surface by only rounded head screws. Additionally plastic flat washer should be used to ensure creepeage distance between screw's head and surface of the pcb. Max. torque for fixing: 0,5Nm.

LED modules are sensitive to electrostatic discharge (ESD). Follow safety regulations according to IEC 61340-5-1.

Protection against electric shock must be provided by the luminaire's enclosure.

### Wiring

Wire cross section and strip length:



| D - wire cross section<br>(solid and flexible wires) | Min                | Max                 |
|--|--------------------|---------------------|
|  | 0.2mm <sup>2</sup> | 0.75mm <sup>2</sup> |
|  | AWG 24             | AWG 18              |

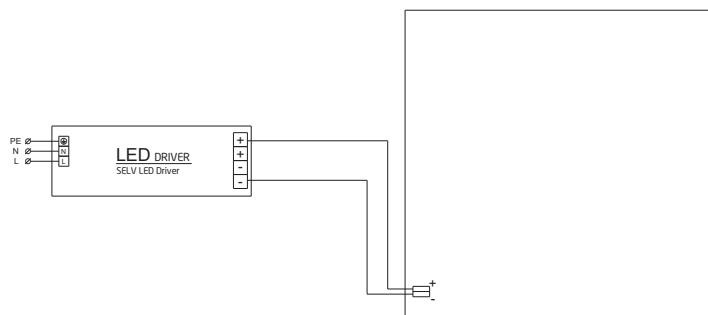
| L - strip length | Min | Max |
|------------------|-----|-----|
|                  | 8mm | 9mm |

Opening for the release of wires from the top with release pin Electroterminal art. 881 167 884:



### Connections

Wiring for parallel connection system



To prevent irregular luminous intensity in parallel connection use only LED modules from the same V-code group. V-code (e.g. \*A\*, \*B\*, \*AB\*) is printed on the LED module and box label. Naming is not adequate to efficacy or luminous flux.

### Ordering codes

| Product name                                  | Ordering code  | Pieces per box | Pieces per pallet | Box dimensions [mm] |
|---|----------------|----------------|-------------------|---------------------|
| RecLED 225x225mm 1500lm 830 30V EMG SSW CJ G4 | 1010 137 83846 | 20             | 2700              | 238 x 238 x 91      |
| RecLED 225x225mm 1500lm 840 30V EMG SSW CJ G4 | 1010 137 47046 | 20             | 2700              | 238 x 238 x 91      |
| RecLED 225x225mm 1500lm 830 30V EMG SSW CN G3 | 1010 147 36646 | 20             | 2700              | 238 x 238 x 91      |
| RecLED 225x225mm 1500lm 840 30V EMG SSW CN G3 | 1010 147 36746 | 20             | 2700              | 238 x 238 x 91      |