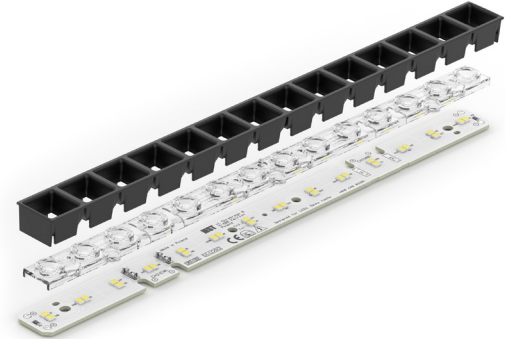


Linear LED 1100lm per 1ft 4C DAISY-MINI

A linear solution for premium class indoor lighting. Optimized for LEDi's DAISY-MINI optics.

Product description

- Long life-time
- Built-in, constant current LED module
- Push-in terminals enabling easy connection
- Compliance and approval: CE
- 4C - four connections for parallel system, also recognized as a low voltage system - SELV
- Available CCT from 2700K to 6500K and CRI 80, 90



The image shows version 2C. The number of connectors may vary depending on the type of module.



LinLED 4C CRI 80 G1

Product name	Ordering code	Colour temperature [K]	Current nominal If nom [mA]	Luminous flux ¹ φ [lm]	Useful luminous flux ² [lm]	Voltage ¹ Vf [V]	Power ¹ P [W]	Efficacy ¹ [lm/W]	Current minimum If min ³ [mA]	Current maximum If max [mA]	Energy Efficiency Class
LinLED 280x18mm 1100lm 830 4C 42V DAISY-MINI G1	1010 127 27846	3000	165	1107	1145	38	6.3	176	20	300	C
LinLED 1120x18mm 4400lm 830 4C 42V DAISY-MINI G1	1010 127 29846	3000	660	4427	4580	38	25	176	80	1200	C
LinLED 280x18mm 1100lm 840 4C 42V DAISY-MINI G1	1010 127 27946	4000	165	1162	1203	38	6.3	184	20	300	C
LinLED 1120x18mm 4400lm 840 4C 42V DAISY-MINI G1	1010 127 29946	4000	660	4650	4811	38	25	184	80	1200	C

LinLED 4C CRI 90 G2

Product name	Ordering code	Colour temperature [K]	Current nominal If nom [mA]	Luminous flux ¹ φ [lm]	Useful luminous flux ² [lm]	Voltage ¹ Vf [V]	Power ¹ P [W]	Efficacy ¹ [lm/W]	Current minimum If min ³ [mA]	Current maximum If max [mA]	Energy Efficiency Class
LinLED 280x18mm 1100lm 927 4C 42V DAISY-MINI G2	1010 127 44446	2700	170	1013	1037	40	6.8	148	20	300	D
LinLED 1120x18mm 4400lm 927 4C 42V DAISY-MINI G2	1010 127 44546	2700	680	4051	4152	40	27	148	80	1200	D
LinLED 280x18mm 1100lm 930 4C 42V DAISY-MINI G2	1010 127 44646	3000	170	1083	1110	40	6.8	158	20	300	D
LinLED 1120x18mm 4400lm 930 4C 42V DAISY-MINI G2	1010 127 44746	3000	680	4331	4438	40	27	158	80	1200	D
LinLED 280x18mm 1100lm 940 4C 42V DAISY-MINI G2	1010 127 44846	4000	170	1153	1181	40	6.8	169	20	300	D
LinLED 1120x18mm 4400lm 940 4C 42V DAISY-MINI G2	1010 127 44946	4000	680	4610	4725	40	27	169	80	1200	D

¹At nominal current and T_p

²At nominal current and 25°C

³It is recommended not to operate below minimum current in order to avoid un-even brightness
Tolerance range for optical and electrical ±10%

Temperature & humidity

Specification item	Unit	Value
T _p	[°C]	45
T _p rated	[°C]	65
T _c	[°C]	85
Relative humidity (non-condensing)	[%]	5 ... 85
Storage ambient temperature	[°C]	-25 ... +85
Storage relative humidity (non-condensing)	[%]	5 ... 85

T_p - Temperature related to the performance parameters of the LED modules

T_p rated - Maximum operating temperature to which the rated performance characteristics are declared

T_c - Highest permissible value for safe operation

Linear LED 1100lm per 1ft 4C DAISY-MINI

Technical data

Specification item	Unit	
Classification acc. to IEC 62031		built-in
Working voltage		60
Beam angle	[deg]	120
Initial color consistency	[SDCM]	3
Photobiological safety		RG1 unlimited

Color coordinates

According to CIE 1931

Specification item	CIE _x	CIE _y
2700K	0.4578	0.4101
3000K	0.4338	0.4030
4000K	0.3818	0.3797
6500K - USUNAC WIERSZ ?	0.3123	0.3282

Certificates & standards

Specification item	280x18	1120x18
ENEC	Yes	No*
CE	Yes	Yes
RoHS	Yes	Yes
REACH	Yes	Yes
Zhaga	No	No
IP rating	No IP rating	No IP rating

*ENEC pending

Lumen maintenance

LinLED CRI 80

Forward current	Tp temp.	L70 [h]		L80 [h]		L90 [h]	
		B50	B10	B50	B10	B50	B10
If nom	45°C	>72 000	>72 000	>72 000	>72 000	63 000	52 000
	55°C	>72 000	>72 000	>72 000	>72 000	63 000	52 000
	65°C	>72 000	>72 000	>72 000	>72 000	61 000	51 000
	75°C	>72 000	>72 000	>72 000	>72 000	59 000	50 000
	85°C	>72 000	>72 000	>72 000	>72 000	58 000	49 000
	45°C	>72 000	>72 000	>72 000	>72 000	51 000	39 000
If max	55°C	>72 000	>72 000	>72 000	>72 000	51 000	39 000
	65°C	>72 000	>72 000	>72 000	>72 000	48 000	37 000
	75°C	>72 000	>72 000	>72 000	>72 000	45 000	35 000
	85°C	>72 000	>72 000	>72 000	69 000	43 000	34 000

reported data based on LM80 LED data (@65mA 17000h / @160mA & 200mA 12000h)

LinLED CRI 90

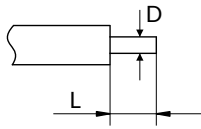
Forward current	Tp temp.	L70 [h]		L80 [h]		L90 [h]	
		B50	B10	B50	B10	B50	B10
If nom	45°C	>60 000	>60 000	>60 000	>60 000	54 000	52 000
	65°C	>60 000	>60 000	>60 000	>60 000	44 000	42 000
	85°C	>60 000	>60 000	>60 000	>60 000	35 000	31 000
If max	45°C	>60 000	>60 000	52 000	49 000	29 000	28 000
	65°C	>60 000	>60 000	47 000	44 000	25 000	24 000
	85°C	>60 000	58 000	41 000	38 000	22 000	19 000

reported data based on LM80 LED data 10 000h

Linear LED 1100lm per 1ft 4C DAISY-MINI

Wiring

Wire cross section and strip length:



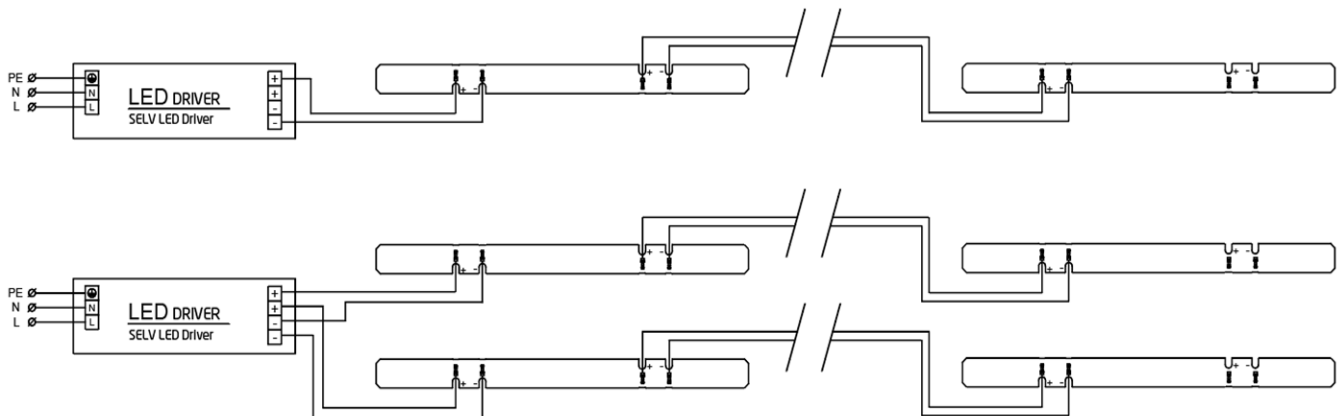
D - wire cross section (solid and flexible wires)	Min	Max
	0.2mm ²	0.5mm ²
	AWG 24	AWG 20

L - strip length	Min	Max
	5.2mm	5.8mm

Connections

Max number of modules	Unit	Series	Parallel
LinLED 280x18mm...	[pcs]	-	6
LinLED 1120x18mm...	[pcs]	-	1

Wiring for parallel connection system (4C)



To prevent irregular luminous intensity in parallel connection use only LED modules from the same V-code group. V-code (e.g. "A", "B", "AB") is printed on the LED module and box label. Naming is not adequate to efficacy or luminous flux.

Energy Label / EPREL database

To obtain Energy Label for this product visit <https://eprel.ec.europa.eu/> and enter model identifier

Model identifier consists of 10 digits XXXX XXX XXX. It is printed directly on the LED module or on product label. This is the number you can see in EPREL database.

Ordering code consist of 12 digits XXXX XXX XXX46. Additional last two digits means packaging of the product.

Linear LED 1100lm per 1ft 4C DAISY-MINI

Ordering codes

Product name	Ordering code	Pieces per box	Pieces per pallet	Box dimensions [mm]
LinLED 280x18mm 1100lm 830 4C 42V DAISY-MINI G1	1010 127 27846	180	19440	298 x 238 x 88
LinLED 280x18mm 1100lm 840 4C 42V DAISY-MINI G1	1010 127 27946	180	19440	298 x 238 x 88
LinLED 280x18mm 1100lm 927 4C 42V DAISY-MINI G2	1010 127 44446	180	19440	298 x 238 x 88
LinLED 280x18mm 1100lm 930 4C 42V DAISY-MINI G2	1010 127 44646	180	19440	298 x 238 x 88
LinLED 280x18mm 1100lm 940 4C 42V DAISY-MINI G2	1010 127 44846	180	19440	298 x 238 x 88
LinLED 1120x18mm 4400lm 830 4C 42V DAISY-MINI G1	1010 127 29846	120	3600	1138 x 236 x 58
LinLED 1120x18mm 4400lm 840 4C 42V DAISY-MINI G1	1010 127 29946	120	3600	1138 x 236 x 58
LinLED 1120x18mm 4400lm 927 4C 42V DAISY-MINI G2	1010 127 44546	120	3600	1138 x 236 x 58
LinLED 1120x18mm 4400lm 930 4C 42V DAISY-MINI G2	1010 127 44746	120	3600	1138 x 236 x 58
LinLED 1120x18mm 4400lm 940 4C 42V DAISY-MINI G2	1010 127 44946	120	3600	1138 x 236 x 58