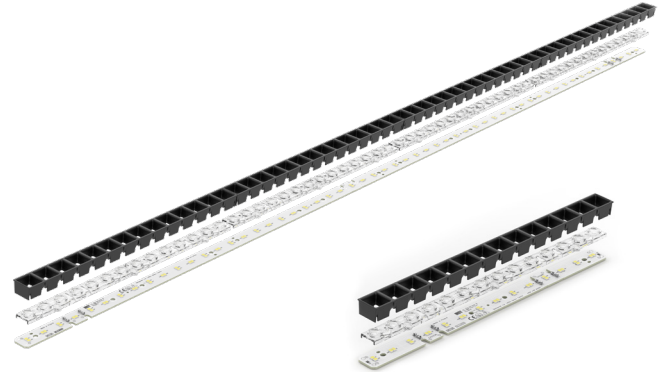


Linear LED modules 280x18mm & 1120x18mm DAISY-MINI 4C

A linear solution for premium class indoor lighting. Optimized for LEDi's DAISY-MINI optics.

Product description

- Long life-time
- Built-in, constant current LED module
- Push-in terminals enabling easy connection
- Compliance and approval: CE, ENEC
- 4C - four connectors for parallel system, also recognized as a low voltage system - SELV
- Other CCT and CRI on request



LinLED CRI 80 CJ G4

Product name	Ordering code	Colour temperature [K]	Current nominal If nom [mA]	Luminous flux ¹ φ [lm]	Useful luminous flux ² [lm]	Voltage ¹ Vf [V]	Power ¹ P [W]	Efficacy ¹ [lm/W]	Current minimum If min ³ [mA]	Current maximum If max [mA]	Energy Efficiency Class
LinLED 280x18mm 1100lm 830 4C 42V DAISY-MINI CJ G4	1010 147 16646	3000	155	1105	1134	38	5.9	188	20	400	C
LinLED 1120x18mm 4400lm 830 4C 42V DAISY-MINI CJ G4	1010 147 16746		620	4422	4534	38	24	188	80	1600	C
LinLED 280x18mm 1100lm 840 4C 42V DAISY-MINI CJ G4	1010 147 16846	4000	155	1150	1179	38	5.9	196	20	400	B
LinLED 1120x18mm 4400lm 840 4C 42V DAISY-MINI CJ G4	1010 147 16946		620	4599	4715	38	24	196	80	1600	B

LinLED CRI 90 EH1.1 G3

Product name	Ordering code	Colour temperature [K]	Current nominal If nom [mA]	Luminous flux ¹ φ [lm]	Useful luminous flux ² [lm]	Voltage ¹ Vf [V]	Power ¹ P [W]	Efficacy ¹ [lm/W]	Current minimum If min ³ [mA]	Current maximum If max [mA]	Energy Efficiency Class
LinLED 280x18mm 1100lm 927 4C 42V DAISY-MINI EH1.1 G3	1010 127 26446	2700	170	1074	1106	41	7.0	154	20	300	D
LinLED 1120x18mm 4400lm 927 4C 42V DAISY-MINI EH1.1 G3	1010 127 30046		680	4295	4424	41	28	154	80	1200	D
LinLED 280x18mm 1100lm 930 4C 42V DAISY-MINI EH1.1 G3	1010 127 26546	3000	170	1074	1106	41	7.0	154	20	300	D
LinLED 1120x18mm 4400lm 930 4C 42V DAISY-MINI EH1.1 G3	1010 127 30146		680	4295	4424	41	28	154	80	1200	D
LinLED 280x18mm 1100lm 940 4C 42V DAISY-MINI EH1.1 G3	1010 127 26646	4000	170	1141	1175	41	7.0	164	20	300	D
LinLED 1120x18mm 4400lm 940 4C 42V DAISY-MINI EH1.1 G3	1010 127 30246		680	4564	4700	41	28	164	80	1200	D

¹At nominal current and T_p

²At nominal current and 25°C

³It is recommended not to operate below minimum current in order to avoid un-even brightness

Tolerance range for optical and electrical ±10%

Temperature & humidity

Specification item	Unit	Value
T _p	[°C]	45
T _p rated	[°C]	65
T _c	[°C]	85
Relative humidity (non-condensing)	[%]	5 ... 85
Storage ambient temperature	[°C]	-25 ... +85
Storage relative humidity (non-condensing)	[%]	5 ... 85

T_p - Temperature related to the performance parameters of the LED modules

T_p rated - Maximum operating temperature to which the rated performance characteristics are declared

T_c - Highest permissible value for safe operation

Technical data

Specification item	Unit	Value
Classification acc. to IEC 62031		built-in
Working voltage		60
Beam angle	[deg]	120
Initial color consistency	[SDCM]	3
Photobiological safety		RG1 unlimited

Linear LED modules 280x18mm & 1120x18mm DAISY-MINI 4C

Color coordinates

According to CIE 1931

Specification item	CIE _x	CIE _y
2700K	0.4578	0.4101
3000K	0.4338	0.4030
4000K	0.3818	0.3797
6500K	0.3123	0.3282

Certificates & standards

Specification item	Value
ENEC	Yes
CE	Yes
RoHS	Yes
REACH	Yes
IP rating	No IP rating

Lumen maintenance

for CJ G4

Forward current	T _p temp.	L70 [h]		L80 [h]		L90 [h]	
		B50	B10	B50	B10	B50	B10
If nom	45°C	>102 000	>102 000	>102 000	>102 000	>102 000	>102 000
	55°C	>102 000	>102 000	>102 000	>102 000	>102 000	>102 000
	65°C	>102 000	>102 000	>102 000	>102 000	87 000	86 000
	75°C	>102 000	>102 000	>102 000	>102 000	74 000	73 000
If max	85°C	>102 000	>102 000	>102 000	>102 000	63 000	62 000
	45°C	>102 000	>102 000	>102 000	>102 000	>102 000	>102 000
	55°C	>102 000	>102 000	>102 000	>102 000	97 000	96 000
	65°C	>102 000	>102 000	>102 000	>102 000	82 000	81 000
85°C	75°C	>102 000	>102 000	>102 000	>102 000	69 000	68 000
	85°C	>102 000	>102 000	>102 000	>102 000	59 000	58 000

Reported data based on LM80 LED data (17 000h)

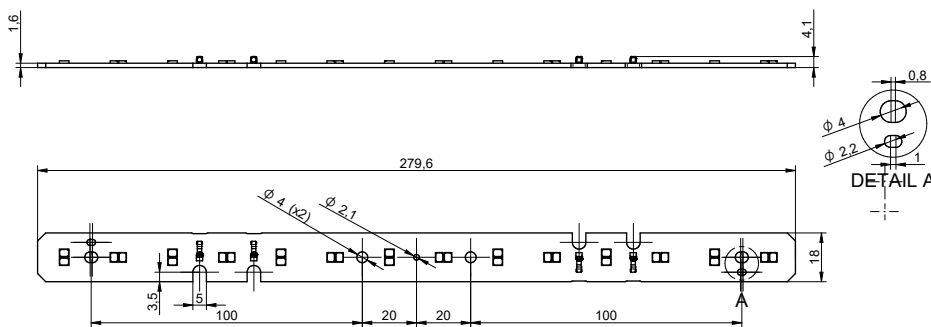
for EH1.1 G3

Forward current	T _p temp.	L70 [h]		L80 [h]		L90 [h]	
		B50	B10	B50	B10	B50	B10
If nom	45°C	>72 000	>72 000	>72 000	>72 000	64 000	60 000
	55°C	>72 000	>72 000	>72 000	>72 000	63 000	59 000
	65°C	>72 000	>72 000	>72 000	>72 000	62 000	57 000
	75°C	>72 000	>72 000	>72 000	>72 000	60 000	56 000
If max	85°C	>72 000	>72 000	>72 000	>72 000	59 000	55 000
	45°C	>72 000	>72 000	67 000	62 000	30 000	29 000
	55°C	>72 000	>72 000	66 000	61 000	30 000	28 000
	65°C	>72 000	>72 000	65 000	60 000	29 000	27 000
85°C	75°C	>72 000	>72 000	65 000	59 000	29 000	26 000
	85°C	>72 000	>72 000	64 000	58 000	28 000	26 000

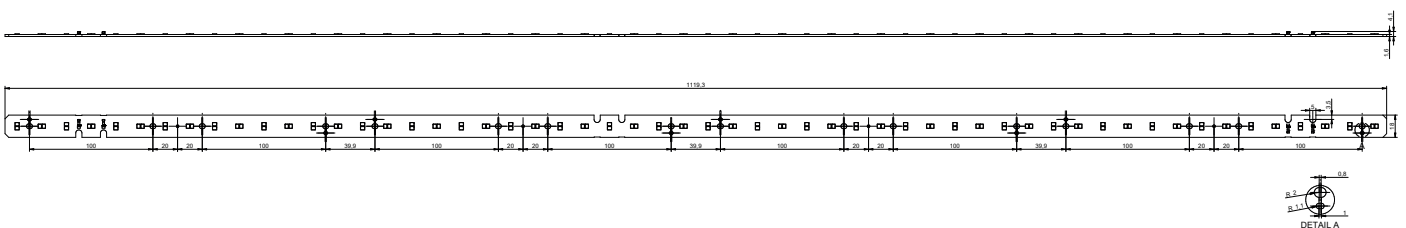
Calculated data based on LM80 LED data (12 000h)

Dimensions

LinLED 280x18mm



LinLED 1120x18mm



Linear LED modules 280x18mm & 1120x18mm DAISY-MINI 4C

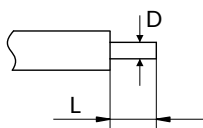
Mounting

LED Modules cannot be exposed to tensile or compressive stresses. For this purpose it is necessary that the modules are assembled to a flat surface by only rounded head screws. Additionally plastic flat washer should be used to ensure creepeage distance between screw's head and surface of the pcb. Max. torque for fixing: 0.5Nm.

LED modules are sensitive to electrostatic discharge (ESD). Follow safety regulations according to IEC 61340-5-1.

Wiring

Wire cross section and strip length:



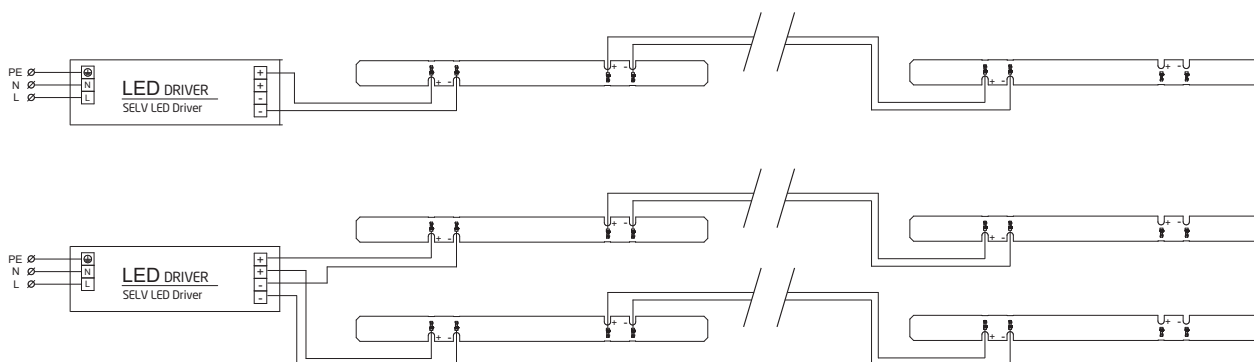
D - wire cross section (solid and flexible wires)	Min	Max
	0.2mm ²	0.5mm ²
	AWG 24	AWG 20

L - strip length	Min
	5.5mm

Connections

Max number of modules	Unit	Series	Parallel
LinLED 280x18mm...	[pcs]	-	6
LinLED 1120x18mm...	[pcs]	-	1

Wiring for parallel connection system (4C)



To prevent irregular luminous intensity in parallel connection use only LED modules from the same V-code group.

V-code (e.g. "A", "B", "AB") is printed on the LED module and box label. Naming is not adequate to efficacy or luminous flux.

Energy Label / EPREL database

To obtain Energy Label for this product visit <https://eprel.ec.europa.eu/> and enter model identifier

Model identifier consists of 10 digits XXXX XXX XXX. It is printed directly on the LED module or on product label. This is the number you can see in EPREL database.

Ordering code consist of 12 digits XXXX XXX XXX46. Additional last two digits means packaging of the product.

Linear LED modules 280x18mm & 1120x18mm DAISY-MINI 4C

Ordering codes

Product name	Ordering code	Pieces per box	Pieces per pallet	Box dimensions [mm]
LinLED 280x18mm 1100lm 830 4C 42V DAISY-MINI CJ G4	1010 147 16646	224	26880	300 x 266 x 83
LinLED 1120x18mm 4400lm 830 4C 42V DAISY-MINI CJ G4	1010 147 16746	224	6720	1198 x 266 x 83
LinLED 280x18mm 1100lm 840 4C 42V DAISY-MINI CJ G4	1010 147 16846	224	26880	300 x 266 x 83
LinLED 1120x18mm 4400lm 840 4C 42V DAISY-MINI CJ G4	1010 147 16946	224	6720	1198 x 266 x 83
LinLED 280x18mm 1100lm 927 4C 42V DAISY-MINI EH1.1 G3	1010 127 26446	224	26880	300 x 266 x 83
LinLED 1120x18mm 4400lm 927 4C 42V DAISY-MINI EH1.1 G3	1010 127 30046	224	6720	1198 x 266 x 83
LinLED 280x18mm 1100lm 930 4C 42V DAISY-MINI EH1.1 G3	1010 127 26546	224	26880	300 x 266 x 83
LinLED 1120x18mm 4400lm 930 4C 42V DAISY-MINI EH1.1 G3	1010 127 30146	224	6720	1198 x 266 x 83
LinLED 280x18mm 1100lm 940 4C 42V DAISY-MINI EH1.1 G3	1010 127 26646	224	26880	300 x 266 x 83
LinLED 1120x18mm 4400lm 940 4C 42V DAISY-MINI EH1.1 G3	1010 127 30246	224	6720	1198 x 266 x 83