

## LED Driver Linear SELV NFC 40W & 80W

### Product description

- Constant current LED driver
- Fixed current output, adjustable in 1 mA steps by NFC
- Built-in type, for class I and II luminaire
- Safety according to EN 61347-1, 61347-2-13
- Performance according to EN 62384
- Harmonic current emission according to EN 61000-3-2
- Immunity according to EN 61547
- Isolated (SELV) versions
- Low output ripple current - high quality of light
- Long lifetime - 100 000 hours
- Metal housing
- Optimized for indoor MST LED modules
- Possibility of programming entire carton - quick programming (current setting)



### Electrical data

Specification item	Unit	LED Driver 40W 25-54V 0.3-1A NFC-L360	LED Driver 80W 25-54V 0.7-2A NFC-L360
Rated input voltage range	[V]	220...240	220...240
Rated input current <sup>1</sup>	[A]	0.2	0.4
Rated input power <sup>1</sup>	[W]	46	91
Rated input frequency	[Hz]	50/60	50/60
Power factor <sup>1</sup>	[-]	0.99	0.99
Total harmonic distortion <sup>1</sup>	[%]	≤7	≤9
Efficiency <sup>1</sup>	[%]	88	89
Output voltage range <sup>2</sup>	[V]	25...54	25...54
Maximum output voltage U-OUT	[V]	60	60
Output current range <sup>2</sup>	[A]	0.3...1	0.7...2
Output current tolerance	[%]	±5	±5
Output power range	[W]	12...40	23...80
Current ripple (LF) <sup>3</sup>	[%]	≤4	≤4
PstLM	[-]	≤1	≤1
SVM	[-]	≤0.4	≤0.4
Dimmable	[-]	no	no
Control method	[-]	NFC	NFC

<sup>1</sup> at 230V, 50Hz, full load

<sup>2</sup> see operating window

<sup>3</sup> ripple = peak / average; ≤120 Hz

### Lifetime

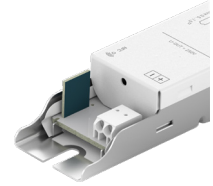
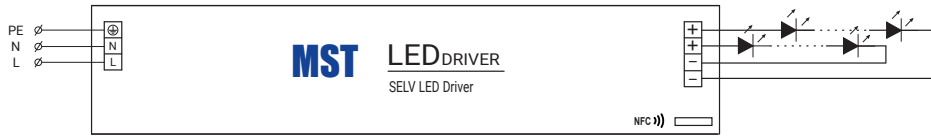
Specification item	Unit	LED Driver 40W 25-54V 0.3-1A NFC-L360	LED Driver 80W 25-54V 0.7-2A NFC-L360
Lifetime at Tp (max 10% failures)	[h]	100 000	100 000
Tp - temperature measured at Tc point	[°C]	70	65

### Wiring (solid wire only)

Specification item	Unit	Value
Wire cross section	[mm <sup>2</sup> ]	0.5...1.5
Strip length	[mm]	8...9

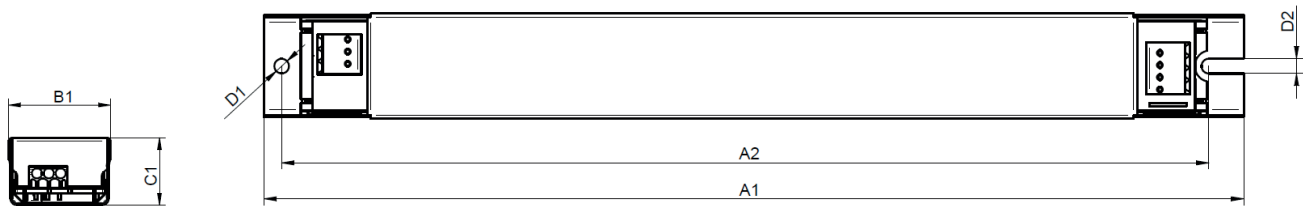
## LED Driver Linear SELV NFC 40W & 80W

### Wiring



### Mechanical

Specification item	Unit	LED Driver 40W 25-54V 0.3-1A NFC-L360	LED Driver 80W 25-54V 0.7-2A NFC-L360
Length (A1)	[mm]	360	360
Width (B1)	[mm]	30	30
Height (C1)	[mm]	21	21
Fixing hole diameter (D1)	[mm]	4.2	4.2
Fixing hole distance (A2)	[mm]	345	345
Weight	[g]	270	295
Ingress protection	[-]	IP20	IP20



### Temperature & humidity

Specification item	Unit	LED Driver 40W 25-54V 0.3-1A NFC-L360	LED Driver 80W 25-54V 0.7-2A NFC-L360
Ambient temperature	[°C]	-20...+50	-20...+45
Tcase	[°C]	75	80
Relative humidity (non-condensing)	[%]	10...90	10...90
Storage ambient temperature	[°C]	-25...+85	-25...+85
Storage relative humidity (non-condensing)	[%]	10...90	10...90

### Surge immunity

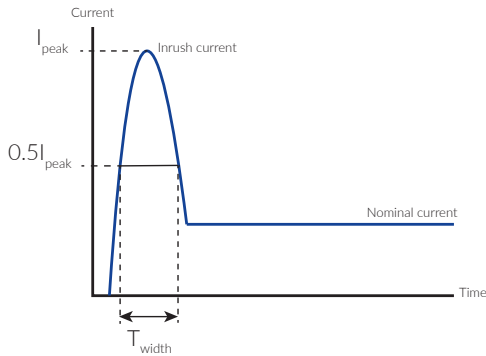
Specification item	Unit	Value
Mains surge immunity - differential mode	[kV]	1
Mains surge immunity - common mode	[kV]	2
Surge voltage at output side (against PE)*	[kV]	≤2.5

\* common mode

## LED Driver Linear SELV NFC 40W & 80W

### Inrush current

Specification item	Unit	LED Driver 40W 25-54V 0.3-1A NFC-L360	LED Driver 80W 25-54V 0.7-2A NFC-L360
Inrush current $I_{peak}$	[A]	16	22
Inrush current $T_{width}$	[ $\mu$ s]	260	220



### Maximum number of drivers

Type of circuit breaker	Unit	LED Driver 40W 25-54V 0.3-1A NFC-L360	LED Driver 80W 25-54V 0.7-2A NFC-L360
B10	[pcs]	14	12
B13	[pcs]	19	16
B16	[pcs]	23	20
B20	[pcs]	29	25
B25	[pcs]	36	31
C10	[pcs]	24	21
C13	[pcs]	31	27
C16	[pcs]	38	33
C20	[pcs]	48	41
C25	[pcs]	59	52

Measurements of inrush and continuous current were taken at rated input voltage. Calculations are based on ABB series S200 circuit breakers as reference. The values shown in the table above are for guidance purpose only. Actual values may differ due to installation environment and used MCBs.

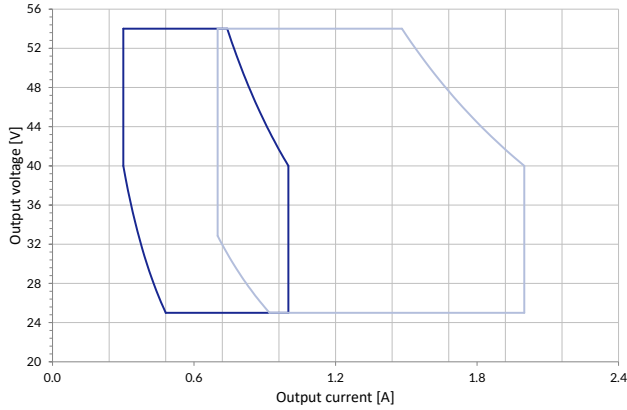
### Protections / Approvals

Specification item	Value
Open load protection	yes
Short circuit protection	yes
Approval marks	CE / ENEC/UKCA

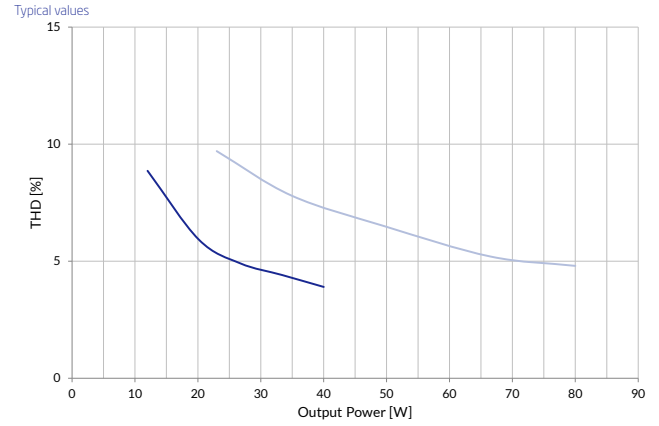
## LED Driver Linear SELV NFC 40W & 80W

— LED Driver 40W 25-54V 0.3-1A NFC-L360  
— LED Driver 80W 25-54V 0.7-2A NFC-L360

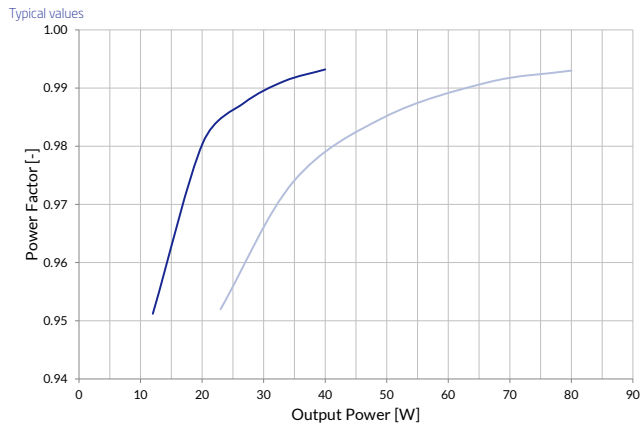
### Operating window



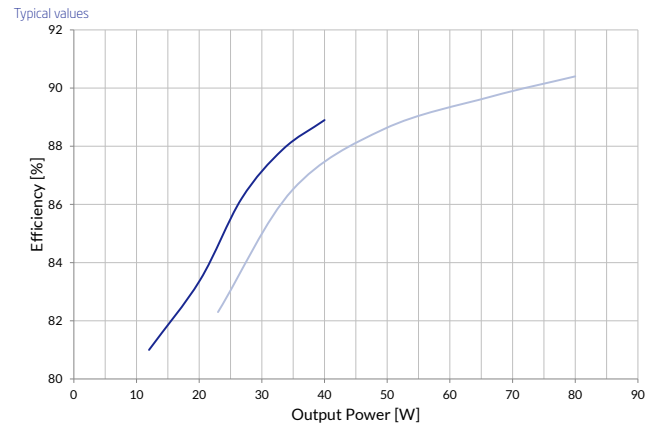
### THD vs output power



### Power factor vs output power



### Efficiency vs output power



### Ordering codes

Specification item	Unit	LED Driver 40W 25-54V 0.3-1A NFC-L360	LED Driver 80W 25-54V 0.7-2A NFC-L360
Ordering code	[-]	1010 120 10246	1010 120 10346
Pieces per box	[pcs]	24	24
Pieces per pallet	[pcs]	2160	2160
Box dimensions	[mm]	373 x 133 x 154	373 x 133 x 154
Product weight	[g]	270	295
Pallet gross weight	[kg]	610	665