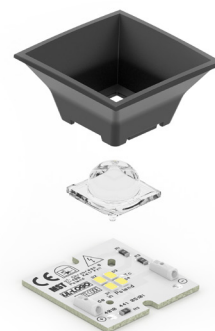


Rectangular LED modules 35x34mm DAISY-1X1

A rectangular solution for premium class indoor lighting. Optimized for LEDiL's DAISY-1X1 optics.

Product description

- Long life-time
- Built-in, constant current LED module
- Re-workable push-in terminals enabling easy connection
- Compliance and approval: CE
- Parallel system, also recognized as a low voltage system - SELV
- Available CCT from 2700K to 6500K and CRI 80, 90



RecLED CRI 80 G1

Product name	Ordering code	Colour temperature [K]	Current nominal If nom [mA]	Luminous flux ¹ φ [lm]	Useful luminous flux ² [lm]	Voltage ¹ Vf [V]	Power ¹ P [W]	Efficacy ¹ [lm/W]	Current minimum If min ³ [mA]	Current maximum If max [mA]	Energy Efficiency Class
RecLED 35x34mm 400lm 830 36V DAISY-1X1 G1	1010 127 63646	3000	85	426	442	36	3.0	141	10	115	D
RecLED 35x34mm 400lm 840 36V DAISY-1X1 G1	1010 127 63746	4000	85	458	475	36	3.0	151	10	115	D
RecLED 35x34mm 400lm 830 18V DAISY-1X1 G1	1010 127 63846	3000	170	426	442	18	3.0	141	20	230	D
RecLED 35x34mm 400lm 840 18V DAISY-1X1 G1	1010 127 63946	4000	170	458	475	18	3.0	151	20	230	D

RecLED CRI 90 G1

Product name	Ordering code	Colour temperature [K]	Current nominal If nom [mA]	Luminous flux ¹ φ [lm]	Useful luminous flux ² [lm]	Voltage ¹ Vf [V]	Power ¹ P [W]	Efficacy ¹ [lm/W]	Current minimum If min ³ [mA]	Current maximum If max [mA]	Energy Efficiency Class
RecLED 35x34mm 400lm 927 36V DAISY-1X1 G1	1010 127 63046	2700	100	396	411	36	3.6	109	10	115	F
RecLED 35x34mm 400lm 930 36V DAISY-1X1 G1	1010 127 63146	3000	100	414	430	36	3.6	114	10	115	E
RecLED 35x34mm 400lm 940 36V DAISY-1X1 G1	1010 127 63246	4000	100	451	468	36	3.6	125	10	115	E
RecLED 35x34mm 400lm 927 18V DAISY-1X1 G1	1010 127 63346	2700	200	396	411	18	3.6	109	20	230	F
RecLED 35x34mm 400lm 930 18V DAISY-1X1 G1	1010 127 63446	3000	200	414	430	18	3.6	114	20	230	E
RecLED 35x34mm 400lm 940 18V DAISY-1X1 G1	1010 127 63546	4000	200	451	468	18	3.6	125	20	230	E

¹At nominal current and T_p

²At nominal current and 25°C

³It is recommended not to operate below minimum current in order to avoid un-even brightness

Tolerance range for optical and electrical ±10%

Temperature & humidity

Specification item	Unit	Value
T _p	[°C]	45
T _{p rated}	[°C]	65
T _c	[°C]	85
Relative humidity (non-condensing)	[%]	5 ... 85
Storage ambient temperature	[°C]	-25 ... +85
Storage relative humidity (non-condensing)	[%]	5 ... 85

T_p - Temperature related to the performance parameters of the LED modules

T_{p rated} - Maximum operating temperature to which the rated performance characteristics are declared

T_c - Highest permissible value for safe operation

Technical data

Specification item	Unit	Value
Classification acc. to IEC 62031		built-in
Working voltage		60
Beam angle	[deg]	120
Initial color consistency	[SDCM]	3
Photobiological safety		RG1 unlimited

Rectangular LED modules 35x34mm DAISY-1X1

Color coordinates

According to CIE 1931

Specification item	CIE _x	CIE _y
2700K	0.4578	0.4101
3000K	0.4338	0.4030
4000K	0.3818	0.3797

Certificates & standards

Specification item	Compliant
ENEC	No
CE	Yes
RoHS	Yes
REACH	Yes
Zhaga	No
IP rating	No IP rating

Lumen maintenance

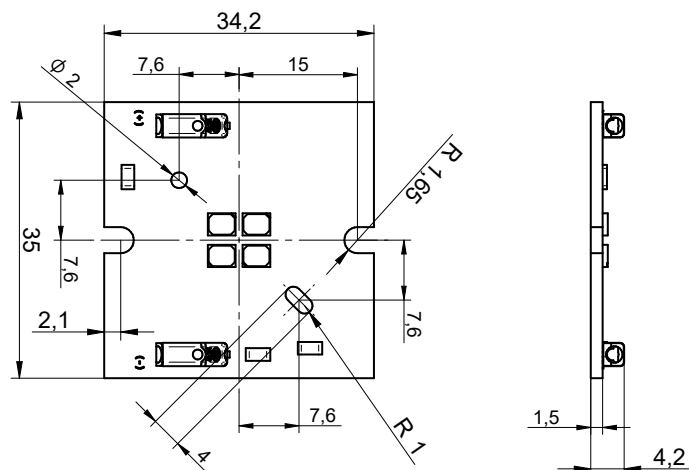
Forward current	T _c	L70 [h]	L80 [h]	L90 [h]
I _{f max}	85°C	181 000	114 000	55 000

calculated data based on LM80 LED data (17000h)

Forward current	T _c	L70 [h]	L80 [h]	L90 [h]
I _{f max}	85°C	>102 000	>102 000	55 000

reported data based on LM80 LED data (17000h)

Dimensions



Mounting

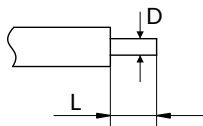
LED Modules cannot be exposed to tensile or compressive stresses. For this purpose it is necessary that the modules are assembled to a flat surface by only rounded head screws. Additionally plastic flat washer should be used to ensure creepeage distance between screw's head and surface of the pcb. Max. torque for fixing: 0,5Nm.

LED modules are sensitive to electrostatic discharge (ESD). Follow safety regulations according to IEC 61340-5-1.

Rectangular LED modules 35x34mm DAISY-1X1

Wiring

Wire cross section and strip length:



D - wire cross section solid and flexible wires	Min	Max
	0.2mm ²	0.5mm ²
	AWG 24	AWG 20

L - strip length	
	7mm

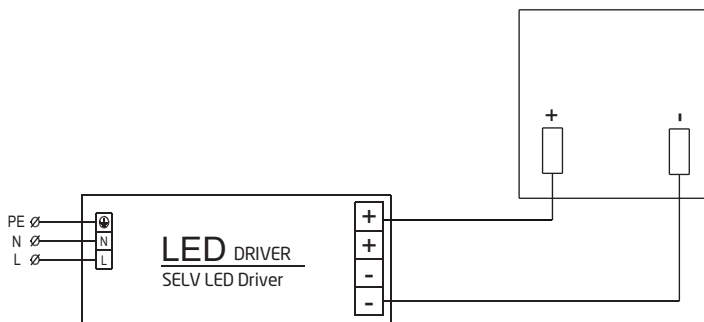
Opening for the release of wires from the top with release tool BJB art. 46.141.U801.89:



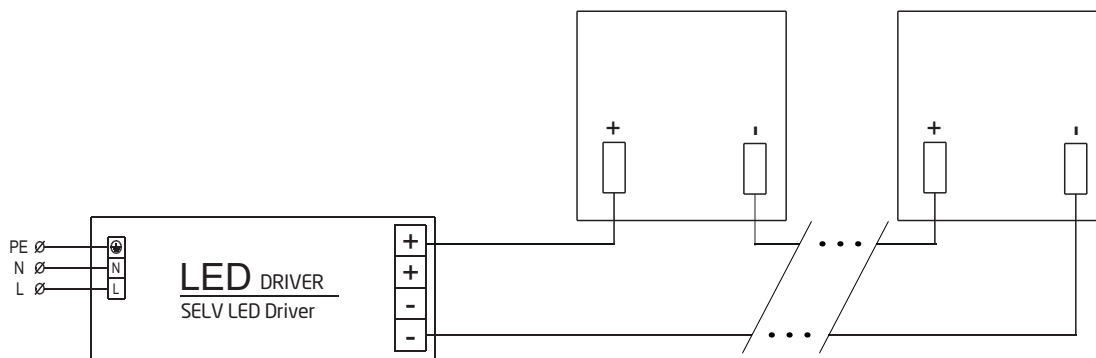
Connections

Max number of modules	Unit	Series	Parallel
RecLED 35x34mm...36V...	[pcs]	1	6
RecLED 35x34mm...18V...	[pcs]	3	6

Wiring for parallel connection system



Wiring for series connection system



To prevent irregular luminous intensity in parallel connection use only LED modules from the same V-code group.
V-code (e.g. "A", "B", "AB") is printed on the LED module and box label. Naming is not adequate to efficacy or luminous flux.

Rectangular LED modules 35x34mm DAISY-1X1

Energy Label / EPREL database

To obtain Energy Label for this product visit <https://eprel.ec.europa.eu/> and enter model identifier

Model identifier consists of 10 digits XXXX XXX XXX. It is printed directly on the LED module or on product label. This is the number you can see in EPREL database.

Ordering code consist of 12 digits XXXX XXX XXX46. Additional last two digits means packaging of the product.

Ordering codes

Product name	Ordering code	Pieces per box	Box dimensions [mm]
RecLED 35x34mm 400lm 830 36V DAISY-1X1 G1	1010 127 63646	72	148 x 75 x 63
RecLED 35x34mm 400lm 840 36V DAISY-1X1 G1	1010 127 63746	72	148 x 75 x 63
RecLED 35x34mm 400lm 830 18V DAISY-1X1 G1	1010 127 63846	72	148 x 75 x 63
RecLED 35x34mm 400lm 840 18V DAISY-1X1 G1	1010 127 63946	72	148 x 75 x 63
RecLED 35x34mm 400lm 927 36V DAISY-1X1 G1	1010 127 63046	72	148 x 75 x 63
RecLED 35x34mm 400lm 930 36V DAISY-1X1 G1	1010 127 63146	72	148 x 75 x 63
RecLED 35x34mm 400lm 940 36V DAISY-1X1 G1	1010 127 63246	72	148 x 75 x 63
RecLED 35x34mm 400lm 927 18V DAISY-1X1 G1	1010 127 63346	72	148 x 75 x 63
RecLED 35x34mm 400lm 930 18V DAISY-1X1 G1	1010 127 63446	72	148 x 75 x 63
RecLED 35x34mm 400lm 940 18V DAISY-1X1 G1	1010 127 63546	72	148 x 75 x 63