

Round LED modules 1/4 RING DAISY-7X1-CRV

Round solution for premium class indoor lighting. Optimized for LEDiL's DAISY-7X1-CRV optics.

Product description

- Long life-time
- Built-in, constant current LED module
- Re-workable push-in terminals enabling easy connection
- Compliance and approval: CE
- 4C - four connections for parallel system, also recognized as a low voltage system - SELV
- Available CCT from 2700K to 6500K and CRI 80, 90



The number of connectors may vary depending on the type of module.

RdLED CRI 80 G1

Product name	Ordering code	Colour temperature [K]	Current nominal If nom [mA]	Luminous flux ¹ φ [lm]	Useful luminous flux ² [lm]	Voltage ¹ Vf [V]	Power ¹ P [W]	Efficacy ¹ [lm/W]	Current minimum If min ³ [mA]	Current maximum If max [mA]	Energy Efficiency Class
RdLED 1/4 RING 2x550lm 827-865 2x4C 42V DAISY-7X1-CRV G1	1010 127 75646	2700	80	522	541	40	3.2	166	10	150	D
RdLED 1/4 RING 1100lm 830 4C 42V DAISY-7X1-CRV G1	1010 127 64646	3000	165	1106	1145	40	6.5	170	20	300	C
RdLED 1/4 RING 1100lm 840 4C 42V DAISY-7X1-CRV G1	1010 127 64746	4000	165	1162	1202	40	6.5	178	20	300	C

RdLED CRI 90 G1

Product name	Ordering code	Colour temperature [K]	Current nominal If nom [mA]	Luminous flux ¹ φ [lm]	Useful luminous flux ² [lm]	Voltage ¹ Vf [V]	Power ¹ P [W]	Efficacy ¹ [lm/W]	Current minimum If min ³ [mA]	Current maximum If max [mA]	Energy Efficiency Class
RdLED 1/4 RING 2x550lm 927-965 2x4C 42V DAISY-7X1-CRV G1	1010 127 75746	2700	95	516	535	41	3.9	132	10	150	E
RdLED 1/4 RING 1100lm 927 4C 42V DAISY-7X1-CRV G1	1010 127 64846	2700	185	1008	1045	41	7.6	133	20	300	E
RdLED 1/4 RING 1100lm 930 4C 42V DAISY-7X1-CRV G1	1010 127 64946	3000	185	1080	1120	41	7.6	142	20	300	E
RdLED 1/4 RING 1100lm 940 4C 42V DAISY-7X1-CRV G1	1010 127 65046	4000	185	1116	1157	41	7.6	147	20	300	D

¹At nominal current and T_p

²At nominal current and 25°C

³It is recommended not to operate below minimum current in order to avoid un-even brightness

Tolerance range for optical and electrical ±10%

Temperature & humidity

Specification item	Unit	Value
T _p	[°C]	45
T _p rated	[°C]	65
T _c	[°C]	85
Relative humidity (non-condensing)	[%]	5 ... 85
Storage ambient temperature	[°C]	-25 ... +85
Storage relative humidity (non-condensing)	[%]	5 ... 85

T_p - Temperature related to the performance parameters of the LED modules

T_p rated - Maximum operating temperature to which the rated performance characteristics are declared

T_c - Highest permissible value for safe operation

Technical data

Specification item	Unit	Value
Classification acc. to IEC 62031		built-in
Working voltage	[Vdc]	60
Beam angle	[deg]	120
Initial color consistency	[SDCM]	3
Photobiological safety		RG1 unlimited

Round LED modules 1/4 RING DAISY-7X1-CRV

Color coordinates

According to CIE 1931

Specification item	CIE _x	CIE _y
2700K	0.4578	0.4101
3000K	0.4338	0.4030
4000K	0.3818	0.3797

Certificates & standards

Specification item	Compliant
ENEC	No
CE	Yes
RoHS	Yes
REACH	Yes
Zhaga	No
IP rating	No IP rating

Lumen maintenance

RdLED CRI 80

Forward current	Tp temp.	L70 [h]		L80 [h]		L90 [h]	
		B50	B10	B50	B10	B50	B10
If nom	45°C	>72 000	>72 000	>72 000	>72 000	67 000	57 000
	55°C	>72 000	>72 000	>72 000	>72 000	67 000	57 000
	65°C	>72 000	>72 000	>72 000	>72 000	65 000	56 000
	75°C	>72 000	>72 000	>72 000	>72 000	64 000	54 000
If max	85°C	>72 000	>72 000	>72 000	>72 000	62 000	54 000
	45°C	>72 000	>72 000	>72 000	>72 000	51 000	39 000
	55°C	>72 000	>72 000	>72 000	>72 000	51 000	39 000
	65°C	>72 000	>72 000	>72 000	>72 000	48 000	37 000
If max	75°C	>72 000	>72 000	>72 000	>72 000	45 000	35 000
	85°C	>72 000	>72 000	>72 000	69 000	43 000	34 000

reported data based on LM80 LED data (@65mA 17000h / @160mA & 200mA 12000h)

RdLED CRI 90

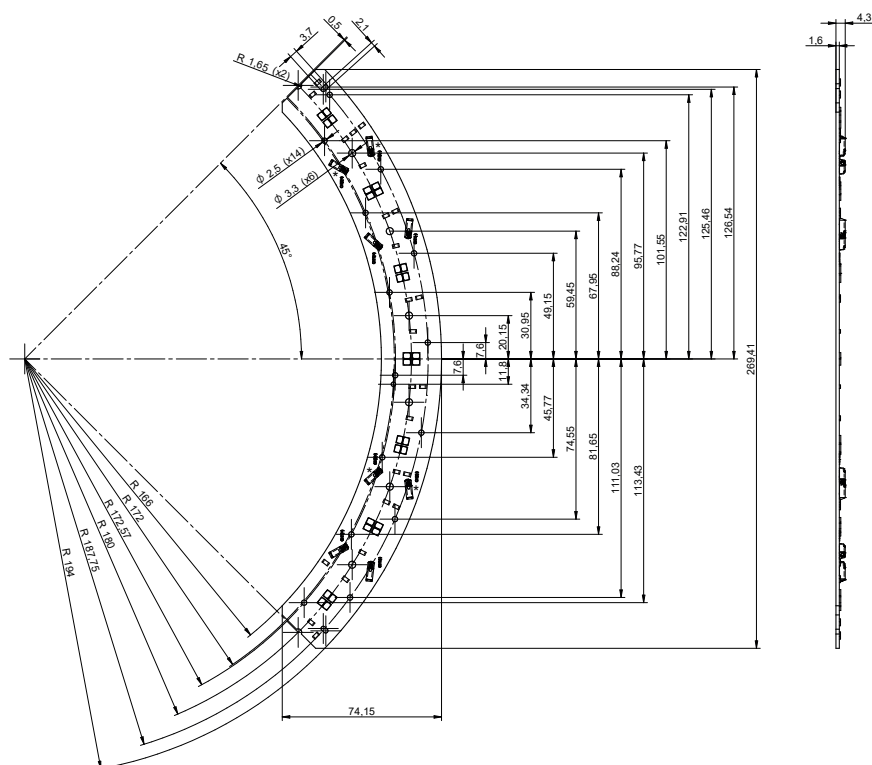
Forward current	Tp temp.	L70 [h]		L80 [h]		L90 [h]	
		B50	B10	B50	B10	B50	B10
If nom	45°C	>60 000	>60 000	>60 000	>60 000	55 000	53 000
	55°C	>60 000	>60 000	>60 000	>60 000	44 000	43 000
	65°C	>60 000	>60 000	>60 000	>60 000	36 000	32 000
If max	45°C	>60 000	>60 000	52 000	49 000	29 000	28 000
	55°C	>60 000	>60 000	47 000	44 000	25 000	24 000
	65°C	>60 000	58 000	41 000	38 000	22 000	19 000

reported data based on LM80 LED data (10 000h)

Round LED modules 1/4 RING DAISY-7X1-CRV

Dimensions

Product name	Ordering code	Connectors (*)
RdLED 1/4 RING 2x550lm 827-865 2x4C 42V DAISY-7X1-CRV G1	1010 127 75646	Yes
RdLED 1/4 RING 1100lm 830 4C 42V DAISY-7X1-CRV G1	1010 127 64646	No
RdLED 1/4 RING 1100lm 840 4C 42V DAISY-7X1-CRV G1	1010 127 64746	No
RdLED 1/4 RING 2x550lm 927-965 2x4C 42V DAISY-7X1-CRV G1	1010 127 75746	Yes
RdLED 1/4 RING 1100lm 927 4C 42V DAISY-7X1-CRV G1	1010 127 64846	No
RdLED 1/4 RING 1100lm 930 4C 42V DAISY-7X1-CRV G1	1010 127 64946	No
RdLED 1/4 RING 1100lm 940 4C 42V DAISY-7X1-CRV G1	1010 127 65046	No



Mounting

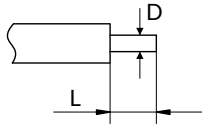
LED Modules cannot be exposed to tensile or compressive stresses. For this purpose it is necessary that the modules are assembled to a flat surface by only rounded head screws. Additionally plastic flat washer should be used to ensure creepage distance between screw's head and surface of the pcb. Max. torque for fixing: 0,5Nm.

LED modules are sensitive to electrostatic discharge (ESD). Follow safety regulations according to IEC 61340-5-1.

Round LED modules 1/4 RING DAISY-7X1-CRV

Wiring

Wire cross section and strip length:



D - wire cross section solid and flexible wires	Min	Max
	0.2mm ²	0.5mm ²
	AWG 24	AWG 20

L - strip length	
	7mm

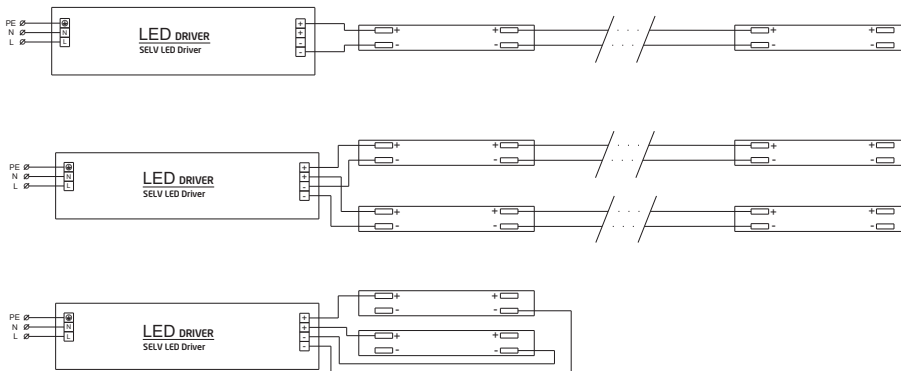
Opening for the release of wires from the top with release tool BJB art. 46.141.U801.89:



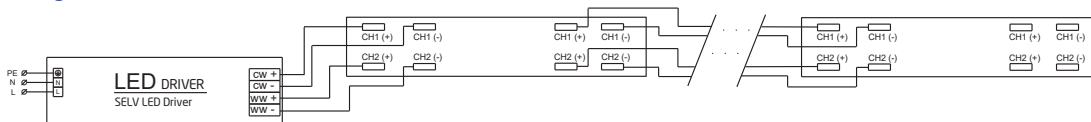
Connections

Max number of modules	Unit	Series	Parallel
RdLED 1/4 RING...	[pcs]	-	6

Wiring for parallel connection system (4C)



Wiring for TW version



To prevent irregular luminous intensity in parallel connection use only LED modules from the same V-code group.
V-code (e.g. "A", "B", "AB") is printed on the LED module and box label. Naming is not adequate to efficacy or luminous flux.

Round LED modules 1/4 RING DAISY-7X1-CRV

Energy Label / EPREL database

To obtain Energy Label for this product visit <https://eprel.ec.europa.eu/> and enter model identifier

Model identifier consists of 10 digits XXXX XXX XXX. It is printed directly on the LED module or on product label. This is the number you can see in EPREL database.

Ordering code consist of 12 digits XXXX XXX XXX46. Additional last two digits means packaging of the product.

Ordering codes

Product name	Ordering code	Pieces per box	Pieces per pallet	Box dimensions [mm]
RdLED 1/4 RING 2x550lm 827-865 2x4C 42V DAISY-7X1-CRV G1	1010 127 75646	80	9600	300 x 266 x 83
RdLED 1/4 RING 1100lm 830 4C 42V DAISY-7X1-CRV G1	1010 127 64646	80	9600	300 x 266 x 83
RdLED 1/4 RING 1100lm 840 4C 42V DAISY-7X1-CRV G1	1010 127 64746	80	9600	300 x 266 x 83
RdLED 1/4 RING 2x550lm 927-965 2x4C 42V DAISY-7X1-CRV G1	1010 127 75746	80	9600	300 x 266 x 83
RdLED 1/4 RING 1100lm 927 4C 42V DAISY-7X1-CRV G1	1010 127 64846	80	9600	300 x 266 x 83
RdLED 1/4 RING 1100lm 930 4C 42V DAISY-7X1-CRV G1	1010 127 64946	80	9600	300 x 266 x 83
RdLED 1/4 RING 1100lm 940 4C 42V DAISY-7X1-CRV G1	1010 127 65046	80	9600	300 x 266 x 83