

Linear LED modules 1100lm 24V per 1ft 2C

Product description

- Long life-time
- Built-in, constant current LED module
- Re-workable push-in terminals enabling easy connection
- Compliance and approval: CE, ENEC
- 2C - two connectors for series system, also recognized as a high voltage system - non-SELV
- Other CCT and CRI on request



LinLED CRI 80 SW2-30 K G8

Product name	Ordering code	Colour temperature [K]	Current nominal If nom [mA]	Luminous flux ¹ φ [lm]	Useful luminous flux ² [lm]	Voltage ¹ Vf [V]	Power ¹ P [W]	Efficacy ¹ [lm/W]	Current minimum If min ³ [mA]	Current maximum If max [mA]	Energy Efficiency Class
LinLED 280x20mm 1100lm 830 2C 24V SW2-30 K G8	1010 157 17046	3000	240	1095	1122	21	5.1	214	40	600	B
LinLED 560x20mm 2200lm 830 2C 48V SW2-30 K G8	1010 157 17146		240	2190	2243	43	10	214	40	600	B
LinLED 280x20mm 1100lm 840 2C 24V SW2-30 K G8	1010 157 17246	4000	240	1138	1166	21	5.1	223	40	600	B
LinLED 560x20mm 2200lm 840 2C 48V SW2-30 K G8	1010 157 17346		240	2277	2332	43	10	223	40	600	B

LinLED CRI 80 S8 G5

Product name	Ordering code	Colour temperature [K]	Current nominal If nom [mA]	Luminous flux ¹ φ [lm]	Useful luminous flux ² [lm]	Voltage ¹ Vf [V]	Power ¹ P [W]	Efficacy ¹ [lm/W]	Current minimum If min ³ [mA]	Current maximum If max [mA]	Energy Efficiency Class
LinLED 70x20mm 275lm 830 2C 6V S8 G5	1010 157 10146	3000	260	273	281	5.4	1.4	196	40	800	B
LinLED 140x20mm 550lm 830 2C 12V S8 G5	1010 157 10246		260	547	563	11	2.8	196	40	800	B
LinLED 280x20mm 1100lm 830 2C 24V S8 G5	1010 157 10346		260	1093	1126	22	5.6	196	40	800	B
LinLED 560x20mm 2200lm 830 2C 48V S8 G5	1010 157 10446		260	2187	2252	43	11	196	40	800	C
LinLED 70x20mm 275lm 840 2C 6V S8 G5	1010 157 10746	4000	260	289	297	5.4	1.4	207	40	800	B
LinLED 140x20mm 550lm 840 2C 12V S8 G5	1010 157 10846		260	578	595	11	2.8	207	40	800	B
LinLED 280x20mm 1100lm 840 2C 24V S8 G5	1010 157 10946		260	1155	1190	21	5.6	207	40	800	B
LinLED 560x20mm 2200lm 840 2C 48V S8 G5	1010 157 11046		260	2311	2379	43	11	207	40	800	B

LinLED CRI 80 CJ G4

Product name	Ordering code	Colour temperature [K]	Current nominal If nom [mA]	Luminous flux ¹ φ [lm]	Useful luminous flux ² [lm]	Voltage ¹ Vf [V]	Power ¹ P [W]	Efficacy ¹ [lm/W]	Current minimum If min ³ [mA]	Current maximum If max [mA]	Energy Efficiency Class
LinLED 70x20mm 275lm 830 2C 6V CJ G4	1010 127 96546	3000	270	276	283	5.4	1.5	190	40	1000	C
LinLED 140x20mm 550lm 830 2C 12V CJ G4	1010 127 96646		270	553	567	11	2.9	190	40	1000	C
LinLED 280x20mm 1100lm 830 2C 24V CJ G4	1010 127 96746		270	1105	1133	22	5.8	190	40	1000	C
LinLED 560x20mm 2200lm 830 2C 48V CJ G4	1010 127 96846		270	2211	2267	43	12	190	40	1000	C
LinLED 70x20mm 275lm 840 2C 6V CJ G4	1010 127 96946	4000	270	287	295	5.4	1.5	198	40	1000	C
LinLED 140x20mm 550lm 840 2C 12V CJ G4	1010 127 97046		270	575	589	11	2.9	198	40	1000	B
LinLED 280x20mm 1100lm 840 2C 24V CJ G4	1010 127 97146		270	1150	1179	22	5.8	198	40	1000	B
LinLED 560x20mm 2200lm 840 2C 48V CJ G4	1010 127 97246		270	2299	2358	43	12	198	40	1000	B

LinLED CRI 80 CN G3

Product name	Ordering code	Colour temperature [K]	Current nominal If nom [mA]	Luminous flux ¹ φ [lm]	Useful luminous flux ² [lm]	Voltage ¹ Vf [V]	Power ¹ P [W]	Efficacy ¹ [lm/W]	Current minimum If min ³ [mA]	Current maximum If max [mA]	Energy Efficiency Class
LinLED 70x20mm 275lm 830 2C 6V CN G3	1010 137 63146	3000	340	330	342	5.5	1.9	177	40	800	C
LinLED 140x20mm 550lm 830 2C 12V CN G3	1010 137 63246		340	660	683	11	3.7	177	40	800	C
LinLED 280x20mm 1100lm 830 2C 24V CN G3	1010 137 63346		340	1321	1367	22	7.5	177	40	800	C
LinLED 560x20mm 2200lm 830 2C 48V CN G3	1010 137 63446		340	2641	2734	44	15	177	40	800	C
LinLED 70x20mm 275lm 840 2C 6V CN G3	1010 137 63746	4000	340	348	360	5.5	1.9	187	40	800	C
LinLED 140x20mm 550lm 840 2C 12V CN G3	1010 137 63846		340	697	721	11	3.7	187	40	800	C
LinLED 280x20mm 1100lm 840 2C 24V CN G3	1010 137 63946		340	1393	1442	22	7.5	187	40	800	C
LinLED 560x20mm 2200lm 840 2C 48V CN G3	1010 137 64046		340	2787	2884	44	15	187	40	800	C

Linear LED modules 1100lm 24V per 1ft 2C

LinLED CRI 80 LG G2

Product name	Ordering code	Colour temperature [K]	Current nominal If nom [mA]	Luminous flux ¹ φ [lm]	Useful luminous flux ² [lm]	Voltage ¹ Vf [V]	Power ¹ P [W]	Efficacy ¹ [lm/W]	Current minimum If min ³ [mA]	Current maximum If max [mA]	Energy Efficiency Class
LinLED 70x20mm 275lm 830 2C 6V LG G2	1010 147 09046	3000	285	267	276	5.5	1.6	169	40	800	D
LinLED 140x20mm 550lm 830 2C 12V LG G2	1010 147 09146		285	534	551	11	3.2	169	40	800	D
LinLED 280x20mm 1100lm 830 2C 24V LG G2	1010 147 09246		285	1069	1102	22	6.3	169	40	800	D
LinLED 560x20mm 2200lm 830 2C 48V LG G2	1010 147 09346		285	2138	2205	44	13	169	40	800	C
LinLED 70x20mm 275lm 840 2C 6V LG G2	1010 147 09446	4000	285	284	293	5.5	1.6	180	40	800	C
LinLED 140x20mm 550lm 840 2C 12V LG G2	1010 147 09546		285	568	586	11	3.2	180	40	800	C
LinLED 280x20mm 1100lm 840 2C 24V LG G2	1010 147 09646		285	1136	1171	22	6.3	180	40	800	C
LinLED 560x20mm 2200lm 840 2C 48V LG G2	1010 147 09746		285	2271	2343	44	13	180	40	800	C

LinLED CRI 80 Opt G3.1

Product name	Ordering code	Colour temperature [K]	Current nominal If nom [mA]	Luminous flux ¹ φ [lm]	Useful luminous flux ² [lm]	Voltage ¹ Vf [V]	Power ¹ P [W]	Efficacy ¹ [lm/W]	Current minimum If min ³ [mA]	Current maximum If max [mA]	Energy Efficiency Class
LinLED 70x20mm 275lm 830 2C 6V Opt G3.1	1010 127 79046	3000	280	283	277	5.5	1.5	183	40	600	C
LinLED 140x20mm 550lm 830 2C 12V Opt G3.1	1010 127 79146		280	567	553	11	3.1	183	40	600	C
LinLED 280x20mm 1100lm 830 2C 24V Opt G3.1	1010 127 79246		280	1134	1107	22	6.2	183	40	600	C
LinLED 560x20mm 2200lm 830 2C 48V Opt G3.1	1010 127 79346		280	2268	2214	44	12	183	40	600	C

LinLED CRI 90 S8 K G7

Product name	Ordering code	Colour temperature [K]	Current nominal If nom [mA]	Luminous flux ¹ φ [lm]	Useful luminous flux ² [lm]	Voltage ¹ Vf [V]	Power ¹ P [W]	Efficacy ¹ [lm/W]	Current minimum If min ³ [mA]	Current maximum If max [mA]	Energy Efficiency Class
LinLED 70x20mm 275lm 930 2C 6V S8 K G7	1010 147 28546	3000	260	270	275	5.4	1.4	194	40	600	C
LinLED 140x20mm 550lm 930 2C 12V S8 K G7	1010 147 28646		260	540	550	11	2.8	194	40	600	C
LinLED 280x20mm 1100lm 930 2C 24V S8 K G7	1010 147 28746		260	1081	1101	21	5.6	194	40	600	C
LinLED 560x20mm 2200lm 930 2C 48V S8 K G7	1010 147 28846		260	2161	2201	43	11	194	40	600	C
LinLED 70x20mm 275lm 940 2C 6V S8 K G7	1010 147 28946	4000	260	286	291	5.4	1.4	205	40	600	B
LinLED 140x20mm 550lm 940 2C 12V S8 K G7	1010 147 29046		260	571	582	11	2.8	205	40	600	B
LinLED 280x20mm 1100lm 940 2C 24V S8 K G7	1010 137 66446		260	1142	1163	21	5.6	205	40	600	B
LinLED 560x20mm 2200lm 940 2C 48V S8 K G7	1010 137 66546		260	2284	2327	43	11	205	40	600	B

LinLED CRI 90 S5 K G6

Product name	Ordering code	Colour temperature [K]	Current nominal If nom [mA]	Luminous flux ¹ φ [lm]	Useful luminous flux ² [lm]	Voltage ¹ Vf [V]	Power ¹ P [W]	Efficacy ¹ [lm/W]	Current minimum If min ³ [mA]	Current maximum If max [mA]	Energy Efficiency Class
LinLED 70x20mm 275lm 930 2C 6V S5 K G6	1010 147 46846	3000	270	271	276	5	1.5	186	40	600	C
LinLED 140x20mm 550lm 930 2C 12V S5 K G6	1010 147 46946		270	543	553	11	2.9	186	40	600	C
LinLED 280x20mm 1100lm 930 2C 24V S5 K G6	1010 147 47046		270	1085	1105	22	5.8	186	40	600	C
LinLED 560x20mm 2200lm 930 2C 48V S5 K G6	1010 147 47146		270	2170	2211	43	12	186	40	600	C
LinLED 70x20mm 275lm 940 2C 6V S5 K G6	1010 147 47246	4000	270	285	290	5	1.5	195	40	600	C
LinLED 140x20mm 550lm 940 2C 12V S5 K G6	1010 147 47346		270	570	581	11	2.9	195	40	600	B
LinLED 280x20mm 1100lm 940 2C 24V S5 K G6	1010 147 47446		270	1140	1161	22	5.8	195	40	600	C
LinLED 560x20mm 2200lm 940 2C 48V S5 K G6	1010 147 47546		270	2280	2322	43	12	195	40	600	C

LinLED CRI 90 EH1.1 G3

Product name	Ordering code	Colour temperature [K]	Current nominal If nom [mA]	Luminous flux ¹ φ [lm]	Useful luminous flux ² [lm]	Voltage ¹ Vf [V]	Power ¹ P [W]	Efficacy ¹ [lm/W]	Current minimum If min ³ [mA]	Current maximum If max [mA]	Energy Efficiency Class
LinLED 70x20mm 275lm 930 2C 6V EH1.1 G3	1010 127 20246	3000	295	270	278	5.7	1.7	159	40	600	D
LinLED 140x20mm 550lm 930 2C 12V EH1.1 G3	1010 157 11346		295	540	556	11	3.4	159	40	600	D
LinLED 280x20mm 1100lm 930 2C 24V EH1.1 G3	1010 157 11446		295	1079	1112	23	6.8	159	40	600	D
LinLED 560x20mm 2200lm 930 2C 48V EH1.1 G3	1010 157 11546		295	2159	2224	46	14	159	40	600	D
LinLED 70x20mm 275lm 940 2C 6V EH1.1 G3	1010 127 20346	4000	295	287	295	5.7	1.7	169	40	600	C
LinLED 140x20mm 550lm 940 2C 12V EH1.1 G3	1010 127 44346		295	573	591	11	3.4	169	40	600	C
LinLED 280x20mm 1100lm 940 2C 24V EH1.1 G3	1010 117 94246		295	1147	1181	23	6.8	169	40	600	C
LinLED 560x20mm 2200lm 940 2C 48V EH1.1 G3	1010 127 31046		295	2294	2363	46	14	169	40	600	D

¹At nominal current and T_p

²At nominal current and 25°C

³It is recommended not to operate below minimum current in order to avoid un-even brightness

Tolerance range for optical and electrical ±10%

Linear LED modules 1100lm 24V per 1ft 2C

Temperature & humidity

Specification item	Unit	Value
Tp	[°C]	45
Tp rated	[°C]	65
Tc	[°C]	85
Relative humidity (non-condensing)	[%]	5 ... 85
Storage ambient temperature	[°C]	-25 ... +85
Storage relative humidity (non-condensing)	[%]	5 ... 85

Tp - Temperature related to the performance parameters of the LED modules

Tp rated - Maximum operating temperature to which the rated performance characteristics are declared

Tc - Highest permissible value for safe operation

Technical data

Specification item	Unit	Value
Classification acc. to IEC 62031		built-in
Working voltage	[Vdc]	350
Beam angle	[deg]	120
Initial color consistency	[SDCM]	3
Photobiological safety		RG1 unlimited

Color coordinates

According to CIE 1931

Specification item	CIEx	CIEy
2700K	0.4578	0.4101
3000K	0.4338	0.4030
4000K	0.3818	0.3797
6500K	0.3123	0.3282

Certificates & standards

Specification item	Compliant
ENEC	Yes
CE	Yes
RoHS	Yes
REACH	Yes
IP rating	No IP rating

Lumen maintenance

for LE G5, LG G2, LA G3

Forward current	Tp temp.	L70 [h]		L80 [h]		L90 [h]	
		B50	B10	B50	B10	B50	B10
If nom	45°C	>100 000	>100 000	>100 000	>100 000	>100 000	>100 000
	55°C	>100 000	>100 000	>100 000	>100 000	>100 000	>100 000
	65°C	>100 000	>100 000	>100 000	>100 000	>100 000	>100 000
	75°C	>100 000	>100 000	>100 000	>100 000	>100 000	98 000
	85°C	>100 000	>100 000	>100 000	>100 000	81 000	73 000
If max	45°C	>100 000	>100 000	92 000	87 000	45 000	42 000
	55°C	>100 000	>100 000	92 000	87 000	45 000	42 000
	65°C	>100 000	>100 000	92 000	87 000	45 000	42 000
	75°C	>100 000	>100 000	92 000	87 000	45 000	42 000
	85°C	>100 000	>100 000	92 000	87 000	45 000	42 000

Calculated data based on LM80 LED data (12 000h)

for CJ G4, CN G3

Forward current	Tp temp.	L70 [h]		L80 [h]		L90 [h]	
		B50	B10	B50	B10	B50	B10
If nom	45°C	>102 000	>102 000	>102 000	>102 000	>102 000	>102 000
	55°C	>102 000	>102 000	>102 000	>102 000	>102 000	>102 000
	65°C	>102 000	>102 000	>102 000	>102 000	87 000	86 000
	75°C	>102 000	>102 000	>102 000	>102 000	74 000	73 000
	85°C	>102 000	>102 000	>102 000	>102 000	63 000	62 000
If max	45°C	>102 000	>102 000	>102 000	>102 000	>102 000	>102 000
	55°C	>102 000	>102 000	>102 000	>102 000	97 000	96 000
	65°C	>102 000	>102 000	>102 000	>102 000	82 000	81 000
	75°C	>102 000	>102 000	>102 000	>102 000	69 000	68 000
	85°C	>102 000	>102 000	>102 000	>102 000	59 000	58 000

Reported data based on LM80 LED data (17 000h)

Linear LED modules 1100lm 24V per 1ft 2C

Lumen maintenance

for S8 K G7, S7 K G7, S5 K G6

Forward current	Tp temp.	L70 [h]		L80 [h]		L90 [h]	
		B50	B10	B50	B10	B50	B10
If nom	45°C	>120 000	>120 000	117 000	114 000	62 000	61 000
	55°C	>120 000	>120 000	96 000	94 000	50 000	49 000
	65°C	>120 000	>120 000	80 000	78 000	41 000	40 000
	75°C	104 000	102 000	67 000	65 000	34 000	33 000
	85°C	89 000	87 000	56 000	55 000	28 000	27 000
If max	45°C	>120 000	>120 000	85 000	82 000	45 000	44 000
	55°C	108 000	104 000	69 000	68 000	36 000	35 000
	65°C	90 000	87 000	57 000	56 000	29 000	29 000
	75°C	75 000	74 000	48 000	47 000	24 000	24 000
	85°C	64 000	63 000	41 000	40 000	20 000	20 000

Calculated data based on LM80 LED data (20 000h)

for EH1.1 G3

Forward current	Tp temp.	L70 [h]		L80 [h]		L90 [h]	
		B50	B10	B50	B10	B50	B10
If nom	45°C	>72 000	>72 000	>72 000	>72 000	64 000	60 000
	55°C	>72 000	>72 000	>72 000	>72 000	63 000	59 000
	65°C	>72 000	>72 000	>72 000	>72 000	62 000	57 000
	75°C	>72 000	>72 000	>72 000	>72 000	60 000	56 000
	85°C	>72 000	>72 000	>72 000	>72 000	59 000	55 000
If max	45°C	>72 000	>72 000	67 000	62 000	30 000	29 000
	55°C	>72 000	>72 000	66 000	61 000	30 000	28 000
	65°C	>72 000	>72 000	65 000	60 000	29 000	27 000
	75°C	>72 000	>72 000	65 000	59 000	29 000	26 000
	85°C	>72 000	>72 000	64 000	58 000	28 000	26 000

Calculated data based on LM80 LED data (12 000h)

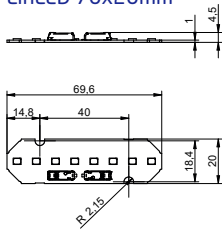
for G3.1

Forward current	Tp temp.	L70 [h]		L80 [h]		L90 [h]	
		B50	B10	B50	B10	B50	B10
If nom	45°C	>100 000	>100 000	>100 000	>100 000	68 000	57 000
	55°C	>100 000	>100 000	>100 000	>100 000	68 000	57 000
	65°C	>100 000	>100 000	>100 000	>100 000	66 000	56 000
	75°C	>100 000	>100 000	>100 000	>100 000	64 000	55 000
	85°C	>100 000	>100 000	>100 000	>100 000	63 000	54 000
If max	45°C	>100 000	>100 000	>100 000	>100 000	51 000	39 000
	55°C	>100 000	>100 000	>100 000	>100 000	51 000	39 000
	65°C	>100 000	>100 000	>100 000	>100 000	48 000	37 000
	75°C	>100 000	>100 000	>100 000	>100 000	45 000	35 000
	85°C	>100 000	>100 000	>100 000	>100 000	43 000	34 000

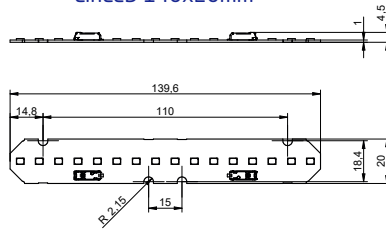
calculated data based on LM80 LED data (@65mA 17000h / @160mA & 200mA 12000h)

Dimensions

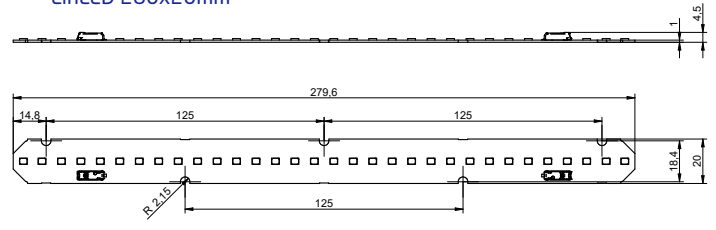
LinLED 70x20mm



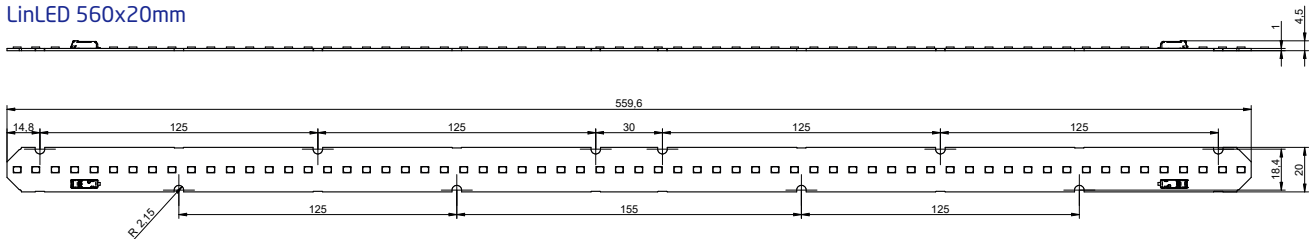
LinLED 140x20mm



LinLED 280x20mm



LinLED 560x20mm



Mounting

LED Modules cannot be exposed to tensile or compressive stresses. For this purpose it is necessary that the modules are assembled to a flat surface by only rounded head screws. Additionally plastic flat washer should be used to ensure creepage distance between screw's head and surface of the pcb. Max. torque for fixing: 0,5Nm.

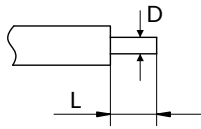
LED modules are sensitive to electrostatic discharge (ESD). Follow safety regulations according to IEC 61340-5-1.

Protection against electric shock must be provided by the luminaire's enclosure.

Linear LED modules 1100lm 24V per 1ft 2C

Wiring

Wire cross section and strip length:



D - wire cross section (solid and flexible wires)	Min	Max
	0.2mm ²	0.75mm ²
	AWG 24	AWG 18

L - strip length	Min	Max
	8mm	9mm

Opening for the release of wires from the top with release pin Electroterminal art. 881 167 884:

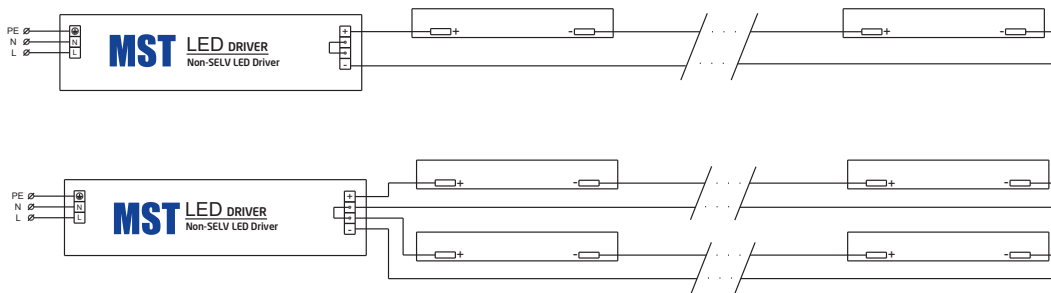


Connections

Max number of modules	Unit	Series	Parallel
LinLED 70x20mm	[pcs]	53	-
LinLED 140x20mm	[pcs]	27	-
LinLED 280x20mm	[pcs]	13	-
LinLED 560x20mm	[pcs]	6	-

You can combine different lengths of LED modules so that the maximum length does not exceed 3780mm

Wiring for series connection system (2C)



Energy Label / EPREL database

To obtain Energy Label for this product visit <https://eprel.ec.europa.eu/> and enter model identifier

Model identifier consists of 10 digits XXXX XXX XXX. It is printed directly on the LED module or on product label. This is the number you can see in EPREL database.

Ordering code consist of 12 digits XXXX XXX XXX46. Additional last two digits means packaging of the product.

Linear LED modules 1100lm 24V per 1ft 2C

Ordering codes

Product name	Ordering code	Pieces per box	Pieces per pallet	Box dimensions [mm]
LinLED 280x20mm 1100lm 830 2C 24V SW2-30 K G8	1010 157 17046	204	24480	300 x 266 x 83
LinLED 560x20mm 2200lm 830 2C 48V SW2-30 K G8	1010 157 17146	204	12240	603 x 266 x 83
LinLED 280x20mm 1100lm 840 2C 24V SW2-30 K G8	1010 157 17246	204	24480	300 x 266 x 83
LinLED 560x20mm 2200lm 840 2C 48V SW2-30 K G8	1010 157 17346	204	12240	603 x 266 x 83
LinLED 70x20mm 275lm 830 2C 6V CJ G4	1010 127 96546	408	97920	150 x 266 x 83
LinLED 140x20mm 550lm 830 2C 12V CJ G4	1010 127 96646	204	48960	150 x 266 x 83
LinLED 280x20mm 1100lm 830 2C 24V CJ G4	1010 127 96746	204	24480	300 x 266 x 83
LinLED 560x20mm 2200lm 830 2C 48V CJ G4	1010 127 96846	204	12240	603 x 266 x 83
LinLED 70x20mm 275lm 840 2C 6V CJ G4	1010 127 96946	408	97920	150 x 266 x 83
LinLED 140x20mm 550lm 840 2C 12V CJ G4	1010 127 97046	204	48960	150 x 266 x 83
LinLED 280x20mm 1100lm 840 2C 24V CJ G4	1010 127 97146	204	24480	300 x 266 x 83
LinLED 560x20mm 2200lm 840 2C 48V CJ G4	1010 127 97246	204	12240	603 x 266 x 83
LinLED 70x20mm 275lm 830 2C 6V CN G3	1010 137 63146	408	97920	150 x 266 x 83
LinLED 140x20mm 550lm 830 2C 12V CN G3	1010 137 63246	204	48960	150 x 266 x 83
LinLED 280x20mm 1100lm 830 2C 24V CN G3	1010 137 63346	204	24480	300 x 266 x 83
LinLED 560x20mm 2200lm 830 2C 48V CN G3	1010 137 63446	204	12240	603 x 266 x 83
LinLED 70x20mm 275lm 840 2C 6V CN G3	1010 137 63746	408	97920	150 x 266 x 83
LinLED 140x20mm 550lm 840 2C 12V CN G3	1010 137 63846	204	48960	150 x 266 x 83
LinLED 280x20mm 1100lm 840 2C 24V CN G3	1010 137 63946	204	24480	300 x 266 x 83
LinLED 560x20mm 2200lm 840 2C 48V CN G3	1010 137 64046	204	12240	603 x 266 x 83
LinLED 70x20mm 275lm 830 2C 6V LG G2	1010 147 09046	408	97920	150 x 266 x 83
LinLED 140x20mm 550lm 830 2C 12V LG G2	1010 147 09146	204	48960	150 x 266 x 83
LinLED 280x20mm 1100lm 830 2C 24V LG G2	1010 147 09246	204	24480	300 x 266 x 83
LinLED 560x20mm 2200lm 830 2C 48V LG G2	1010 147 09346	204	12240	603 x 266 x 83
LinLED 70x20mm 275lm 840 2C 6V LG G2	1010 147 09446	408	97920	150 x 266 x 83
LinLED 140x20mm 550lm 840 2C 12V LG G2	1010 147 09546	204	48960	150 x 266 x 83
LinLED 280x20mm 1100lm 840 2C 24V LG G2	1010 147 09646	204	24480	300 x 266 x 83
LinLED 560x20mm 2200lm 840 2C 48V LG G2	1010 147 09746	204	12240	603 x 266 x 83
LinLED 70x20mm 275lm 930 2C 6V S8 K G7	1010 147 28546	408	97920	150 x 266 x 83
LinLED 140x20mm 550lm 930 2C 12V S8 K G7	1010 147 28646	204	48960	150 x 266 x 83
LinLED 280x20mm 1100lm 930 2C 24V S8 K G7	1010 147 28746	204	24480	300 x 266 x 83
LinLED 560x20mm 2200lm 930 2C 48V S8 K G7	1010 147 28846	204	12240	603 x 266 x 83
LinLED 70x20mm 275lm 940 2C 6V S8 K G7	1010 147 28946	408	97920	150 x 266 x 83
LinLED 140x20mm 550lm 940 2C 12V S8 K G7	1010 147 29046	204	48960	150 x 266 x 83
LinLED 280x20mm 1100lm 940 2C 24V S8 K G7	1010 137 66446	204	24480	300 x 266 x 83
LinLED 560x20mm 2200lm 940 2C 48V S8 K G7	1010 137 66546	204	12240	603 x 266 x 83
LinLED 70x20mm 275lm 930 2C 6V S5 K G6	1010 147 46846	408	97920	150 x 266 x 83
LinLED 140x20mm 550lm 930 2C 12V S5 K G6	1010 147 46946	204	48960	150 x 266 x 83
LinLED 280x20mm 1100lm 930 2C 24V S5 K G6	1010 147 47046	204	24480	300 x 266 x 83
LinLED 560x20mm 2200lm 930 2C 48V S5 K G6	1010 147 47146	204	12240	603 x 266 x 83
LinLED 70x20mm 275lm 940 2C 6V S5 K G6	1010 147 47246	408	97920	150 x 266 x 83
LinLED 140x20mm 550lm 940 2C 12V S5 K G6	1010 147 47346	204	48960	150 x 266 x 83
LinLED 280x20mm 1100lm 940 2C 24V S5 K G6	1010 147 47446	204	24480	300 x 266 x 83
LinLED 560x20mm 2200lm 940 2C 48V S5 K G6	1010 147 47546	204	12240	603 x 266 x 83
LinLED 70x20mm 275lm 930 2C 6V EH1.1 G3	1010 127 20246	408	97920	150 x 266 x 83
LinLED 140x20mm 550lm 930 2C 12V EH1.1 G3	1010 157 11346	204	48960	150 x 266 x 83
LinLED 280x20mm 1100lm 930 2C 24V EH1.1 G3	1010 157 11446	204	24480	300 x 266 x 83
LinLED 560x20mm 2200lm 930 2C 48V EH1.1 G3	1010 157 11546	204	12240	603 x 266 x 83
LinLED 70x20mm 275lm 940 2C 6V EH1.1 G3	1010 127 20346	408	97920	150 x 266 x 83
LinLED 140x20mm 550lm 940 2C 12V EH1.1 G3	1010 127 44346	204	48960	150 x 266 x 83
LinLED 280x20mm 1100lm 940 2C 24V EH1.1 G3	1010 117 94246	204	24480	300 x 266 x 83
LinLED 560x20mm 2200lm 940 2C 48V EH1.1 G3	1010 127 31046	204	12240	603 x 266 x 83
LinLED 70x20mm 275lm 830 2C 6V Opt G3.1	1010 127 79046	408	97920	150 x 266 x 83
LinLED 140x20mm 550lm 830 2C 12V Opt G3.1	1010 127 79146	204	48960	150 x 266 x 83
LinLED 280x20mm 1100lm 830 2C 24V Opt G3.1	1010 127 79246	204	24480	300 x 266 x 83
LinLED 560x20mm 2200lm 830 2C 48V Opt G3.1	1010 127 79346	204	12240	603 x 266 x 83