

Linear LED modules 1100lm per 1 ft LIANNA-2R

A linear solution for retail and industrial lighting. Optimized for LEDiL's LIANNA-2R optics.

Product description

- Long life-time
- Built-in, constant current LED module
- Re-workable push-in terminals enabling easy connection
- Compliance and approval: CE
- Available CCT from 2700K to 6500K and CRI 80, 90



LinLED CRI 80 G1

Product name	Ordering code	Colour temperature [K]	Current nominal If nom [mA]	Luminous flux ¹ φ [lm]	Useful luminous flux ² [lm]	Voltage ¹ Vf [V]	Power ¹ P [W]	Efficacy ¹ [lm/W]	Current minimum If min ³ [mA]	Current maximum If max [mA]	Energy Efficiency Class
LinLED 277x26mm 1100lm 830 2C 27V LIANNA-2R G1	1010 127 90746	3000	230	1029	1055	24	5,5	187	40	1000	C
LinLED 557x26mm 2200lm 830 2C 54V LIANNA-2R G1	1010 127 91246		230	2058	2111	48	11	187	40	1000	C
LinLED 1119.5x26mm 4400lm 830 2C 108V LIANNA-2R G1	1010 127 91346		230	4117	4221	96	22	187	40	1000	C
LinLED 277x26mm 1100lm 840 2C 27V LIANNA-2R G1	1010 127 90846	4000	230	1100	1128	24	5,5	200	40	1000	B
LinLED 557x26mm 2200lm 840 2C 54V LIANNA-2R G1	1010 127 91446		230	2200	2256	48	11	200	40	1000	B
LinLED 1119.5x26mm 4400lm 840 2C 108V LIANNA-2R G1	1010 127 91546		230	4400	4512	96	22	200	40	1000	B

¹At nominal current and T_p

²At nominal current and 25°C

³It is recommended not to operate below minimum current in order to avoid un-even brightness

Tolerance range for optical and electrical ±10%

Temperature & humidity

Specification item	Unit	Value
T _p	[°C]	45
T _{p rated}	[°C]	65
T _c	[°C]	85
Relative humidity (non-condensing)	[%]	5 ... 85
Storage ambient temperature	[°C]	-25 ... +85
Storage relative humidity (non-condensing)	[%]	5 ... 85

T_p - Temperature related to the performance parameters of the LED modules

T_{p rated} - Maximum operating temperature to which the rated performance characteristics are declared

T_c - Highest permissible value for safe operation

Technical data

Specification item	Unit	Value
Classification acc. to IEC 62031		built-in
Working voltage	[Vdc]	350
Beam angle	[deg]	120
Initial color consistency	[SDCM]	3
Photobiological safety		RG1 unlimited

Color coordinates

According to CIE 1931

Specification item	CIE _x	CIE _y
2700K	0.4578	0.4101
3000K	0.4338	0.4030
4000K	0.3818	0.3797
6500K	0.3123	0.3282

Linear LED modules 1100lm per 1 ft LIANNA-2R

Certificates & standards

Specification item	Compliant
ENEC	No
CE	Yes
RoHS	Yes
REACH	Yes
Zhaga	No
IP rating	No IP rating

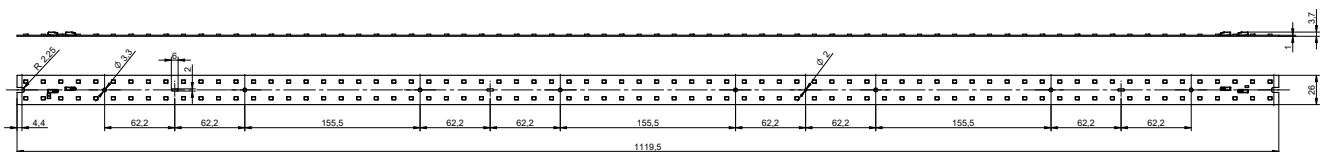
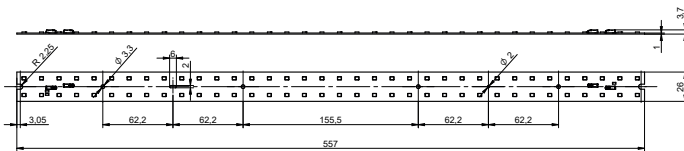
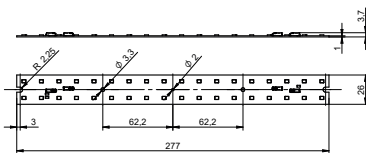
Lumen maintenance

LinLED CRI 80

Forward current	Tp temp.	L70 [h]	L80 [h]	L90 [h]
If max	85°C	>102 000	>102 000	53 000

reported data based on LM80 LED data 17 000h

Dimensions



Mounting

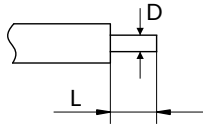
LED Modules cannot be exposed to tensile or compressive stresses. For this purpose it is necessary that the modules are assembled to a flat surface by only rounded head screws. Additionally plastic flat washer should be used to ensure creepage distance between screw's head and surface of the pcb. Max. torque for fixing: 0,5Nm.

LED modules are sensitive to electrostatic discharge (ESD). Follow safety regulations according to IEC 61340-5-1.

Linear LED modules 1100lm per 1 ft LIANNA-2R

Wiring

Wire cross section and strip length:



D - wire cross section solid and flexible wires	Min	Max
	0.2mm ²	0.5mm ²
	AWG 24	AWG 20

L - strip length	
	7mm

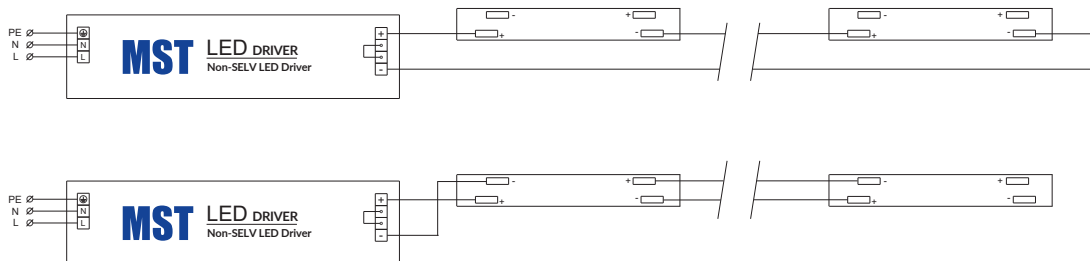
Opening for the release of wires from the top with release tool BJB art. 46.141.U801.89:



Connections

Max number of modules	Unit	Series	Parallel
LinLED 277x26mm...	[pcs]	12	-
LinLED 557x26mm...	[pcs]	6	-
LinLED 1119.5x26mm	[pcs]	3	-

Wiring for series connection system



Ordering codes

Product name	Ordering code	Pieces per box	Pieces per pallet	Box dimensions [mm]
LinLED 277x26mm 1100lm 830 2C 24V LIANNA-2R G1	1010 127 90746	135	16200	300 x 266 x 75
LinLED 277x26mm 1100lm 840 2C 24V LIANNA-2R G1	1010 127 90846	135	16200	300 x 266 x 75