

## Linear LED modules 1100lm per 1 ft LIANNA-2R

A linear solution for retail and industrial lighting. Optimized for LEDiL's LIANNA-2R optics.

### Product description

- Long life-time
- Built-in, constant current LED module
- Re-workable push-in terminals enabling easy connection
- Compliance and approval: CE
- Available CCT from 2700K to 6500K and CRI 80, 90



### LinLED CRI 80 G1

Product name	Ordering code	Colour temperature [K]	Current nominal If nom [mA]	Luminous flux <sup>1</sup> φ [lm]	Useful luminous flux <sup>2</sup> [lm]	Voltage <sup>1</sup> Vf [V]	Power <sup>1</sup> P [W]	Efficacy <sup>1</sup> [lm/W]	Current minimum If min <sup>3</sup> [mA]	Current maximum If max [mA]	Energy Efficiency Class
LinLED 277x26mm 1100lm 830 2C 27V LIANNA-2R G1	1010 127 90746	3000	230	1029	1055	24	5,5	187	40	1000	C
LinLED 557x26mm 2200lm 830 2C 54V LIANNA-2R G1	1010 127 91246		230	2058	2111	48	11	187	40	1000	C
LinLED 1119.5x26mm 4400lm 830 2C 108V LIANNA-2R G1	1010 127 91346		230	4117	4221	96	22	187	40	1000	C
LinLED 277x26mm 1100lm 840 2C 27V LIANNA-2R G1	1010 127 90846	4000	230	1100	1128	24	5,5	200	40	1000	B
LinLED 557x26mm 2200lm 840 2C 54V LIANNA-2R G1	1010 127 91446		230	2200	2256	48	11	200	40	1000	B
LinLED 1119.5x26mm 4400lm 840 2C 108V LIANNA-2R G1	1010 127 91546		230	4400	4512	96	22	200	40	1000	B

<sup>1</sup>At nominal current and T<sub>p</sub>

<sup>2</sup>At nominal current and 25°C

<sup>3</sup>It is recommended not to operate below minimum current in order to avoid un-even brightness

Tolerance range for optical and electrical ±10%

### Temperature & humidity

Specification item	Unit	Value
T <sub>p</sub>	[°C]	45
T <sub>p rated</sub>	[°C]	65
T <sub>c</sub>	[°C]	85
Relative humidity (non-condensing)	[%]	5 ... 85
Storage ambient temperature	[°C]	-25 ... +85
Storage relative humidity (non-condensing)	[%]	5 ... 85

T<sub>p</sub> - Temperature related to the performance parameters of the LED modules

T<sub>p rated</sub> - Maximum operating temperature to which the rated performance characteristics are declared

T<sub>c</sub> - Highest permissible value for safe operation

### Technical data

Specification item	Unit	Value
Classification acc. to IEC 62031		built-in
Working voltage	[Vdc]	350
Beam angle	[deg]	120
Initial color consistency	[SDCM]	3
Photobiological safety		RG1 unlimited

### Color coordinates

According to CIE 1931

Specification item	CIE <sub>x</sub>	CIE <sub>y</sub>
2700K	0.4578	0.4101
3000K	0.4338	0.4030
4000K	0.3818	0.3797
6500K	0.3123	0.3282

## Linear LED modules 1100lm per 1 ft LIANNA-2R

### Certificates & standards

Specification item	Compliant
ENEC	No
CE	Yes
RoHS	Yes
REACH	Yes
Zhaga	No
IP rating	No IP rating

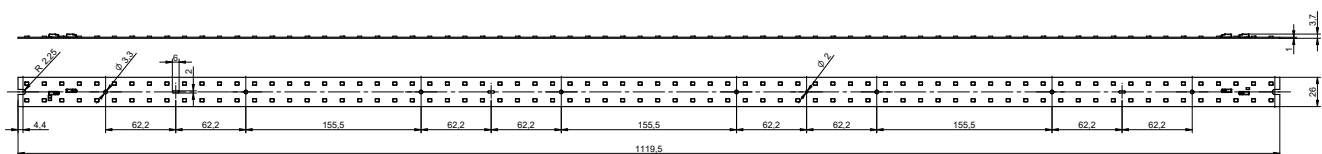
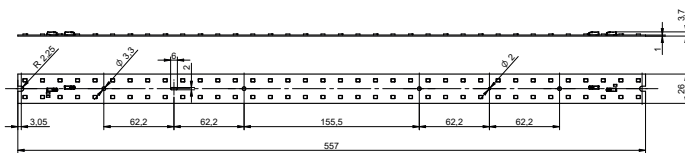
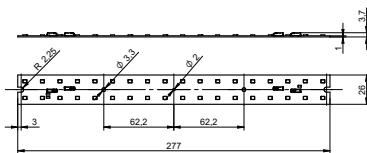
### Lumen maintenance

### LinLED CRI 80

Forward current	Tp temp.	L70 [h]	L80 [h]	L90 [h]
If max	85°C	>102 000	>102 000	53 000

reported data based on LM80 LED data 17 000h

### Dimensions



### Mounting

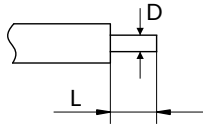
LED Modules cannot be exposed to tensile or compressive stresses. For this purpose it is necessary that the modules are assembled to a flat surface by only rounded head screws. Additionally plastic flat washer should be used to ensure creepage distance between screw's head and surface of the pcb. Max. torque for fixing: 0,5Nm.

LED modules are sensitive to electrostatic discharge (ESD). Follow safety regulations according to IEC 61340-5-1.

## Linear LED modules 1100lm per 1 ft LIANNA-2R

### Wiring

Wire cross section and strip length:



D - wire cross section solid and flexible wires	Min	Max
	0.2mm <sup>2</sup>	0.5mm <sup>2</sup>
	AWG 24	AWG 20

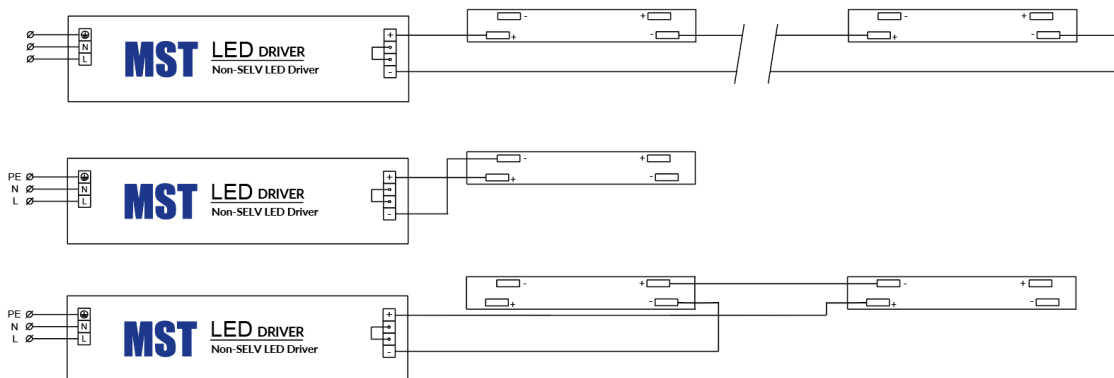
L - strip length	
	7mm

Opening for the release of wires from the top with release tool BJB art. 46.141.U801.89:



Max number of modules	Unit	Series	Parallel
LinLED 277x26mm...	[pcs]	12	-
LinLED 557x26mm..	[pcs]	6	-
LinLED 1119.5x26mm	[pcs]	3	-

### Wiring for series connection system



### Ordering codes

Product name	Ordering code	Pieces per box	Pieces per pallet	Box dimensions [mm]
LinLED 277x26mm 1100lm 830 2C 24V LIANNA-2R G1	1010 127 90746	135	16200	300 x 266 x 75
LinLED 277x26mm 1100lm 840 2C 24V LIANNA-2R G1	1010 127 90846	135	16200	300 x 266 x 75
LinLED 1119.5x26mm 4400lm 830 2C 108V LIANNA-2R G1	1010 127 91346	153	4590	1198 x 266 x 83
LinLED 277x26mm 1100lm 840 2C 27V LIANNA-2R G1	1010 127 90846	135	16200	300 x 266 x 75
LinLED 557x26mm 2200lm 840 2C 54V LIANNA-2R G1	1010 127 91446	153	9180	600 x 266 x 83
LinLED 1119.5x26mm 4400lm 840 2C 108V LIANNA-2R G1	1010 127 91546	153	4590	1198 x 266 x 83