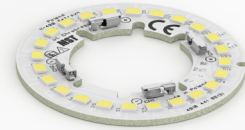


Ring LED modules 29.2-54.2 ULLA-UP

Ring solution for premium class indoor lighting. Optimized for LEDi's ULLA-UP optics.

Product description

- Long life-time
- Built-in, constant current LED module
- Re-workable push-in terminals enabling easy connection
- Compliance and approval: CE
- Available CCT from 2700K to 6500K and CRI 80, 90



The number of connectors may vary depending on the type of module.

RingLED CRI 80 CJ G4

Product name	Ordering code	Colour temperature [K]	Current nominal If nom [mA]	Luminous flux ¹ φ [lm]	Useful luminous flux ² [lm]	Voltage ¹ Vf [V]	Power ¹ P [W]	Efficacy ¹ [lm/W]	Current minimum If min ³ [mA]	Current maximum If max [mA]	Energy Efficiency Class
RingLED 29.2-54.2mm 2x450lm 827-865 36V ULLA-UP CJ G4	1010 147 71846	2700	75	430	441	32	2,4	177	10	200	C
RingLED 29.2-54.2mm 900lm 830 36V ULLA-UP CJ G4	1010 147 71646	3000	150	475	487	32	2,4	195	10	200	C
RingLED 29.2-54.2mm 900lm 840 36V ULLA-UP CJ G4	1010 147 71746	4000	150	918	942	32	4,9	189	20	400	C
RingLED 29.2-54.2mm 900lm 840 36V ULLA-UP CJ G4	1010 147 71746	4000	150	955	979	32	4,9	196	20	400	B

¹At nominal current and T_p

²At nominal current and 25°C

³It is recommended not to operate below minimum current in order to avoid un-even brightness

Tolerance range for optical and electrical ±10%

Temperature & humidity

Specification item	Unit	Value
T _p	[°C]	45
T _p rated	[°C]	65
T _c	[°C]	85
Relative humidity (non-condensing)	[%]	5 ... 85
Storage ambient temperature	[°C]	-25 ... +85
Storage relative humidity (non-condensing)	[%]	5 ... 85

T_p - Temperature related to the performance parameters of the LED modules

T_p rated - Maximum operating temperature to which the rated performance characteristics are declared

T_c - Highest permissible value for safe operation

Technical data

Specification item	Unit	Value
Classification acc. to IEC 62031		built-in
Working voltage	[Vdc]	60
Beam angle	[deg]	120
Initial color consistency	[SDCM]	3
Photobiological safety		RG1 unlimited

Ring LED modules 29.2-54.2 ULLA-UP

Color coordinates

According to CIE 1931

Specification item	CIE _x	CIE _y
2700K	0.4578	0.4101
3000K	0.4338	0.4030
4000K	0.3818	0.3797
6500K	0.3123	0.3282

Certificates & standards

Specification item	Compliant
ENEC	No
CE	Yes
RoHS	Yes
REACH	Yes
IP rating	No IP rating

Lumen maintenance

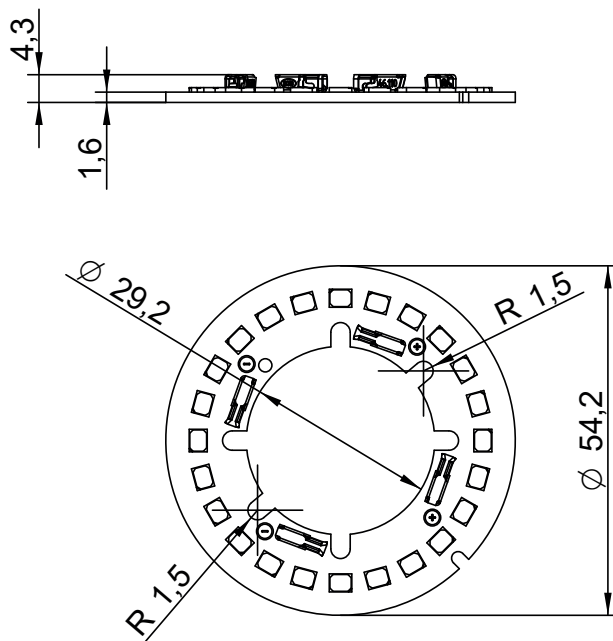
for CJ G4

Forward current	Tp temp.	L70 [h]		L80 [h]		L90 [h]	
		B50	B10	B50	B10	B50	B10
If nom	45°C	>102 000	>102 000	>102 000	>102 000	>102 000	>102 000
	55°C	>102 000	>102 000	>102 000	>102 000	>102 000	>102 000
	65°C	>102 000	>102 000	>102 000	>102 000	87 000	86 000
	75°C	>102 000	>102 000	>102 000	>102 000	74 000	73 000
	85°C	>102 000	>102 000	>102 000	>102 000	63 000	62 000
If max	45°C	>102 000	>102 000	>102 000	>102 000	>102 000	>102 000
	55°C	>102 000	>102 000	>102 000	>102 000	97 000	96 000
	65°C	>102 000	>102 000	>102 000	>102 000	82 000	81 000
	75°C	>102 000	>102 000	>102 000	>102 000	69 000	68 000
	85°C	>102 000	>102 000	>102 000	>102 000	59 000	58 000

Reported data based on LM80 LED data (17 000h)

Dimensions

Product name	Ordering code	Connectors (*)
RingLED 29.2-54.2mm 2x450lm 827-865 36V ULLA-UP CJ G4	1010 147 71846	Yes
RingLED 29.2-54.2mm 900lm 830 36V ULLA-UP CJ G4	1010 147 71646	No
RingLED 29.2-54.2mm 900lm 840 36V ULLA-UP CJ G4	1010 147 71746	No



Ring LED modules 29.2-54.2 ULLA-UP

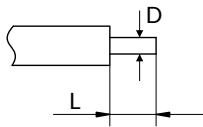
Mounting

LED Modules cannot be exposed to tensile or compressive stresses. For this purpose it is necessary that the modules are assembled to a flat surface by only rounded head screws. Additionally plastic flat washer should be used to ensure creepage distance between screw's head and surface of the pcb. Max. torque for fixing: 0,5Nm.

LED modules are sensitive to electrostatic discharge (ESD). Follow safety regulations according to IEC 61340-5-1.

Wiring

Wire cross section and strip length:



D - wire cross section solid and flexible wires	Min	Max
	0.2mm ²	0.75mm ²
	AWG 24	AWG 18

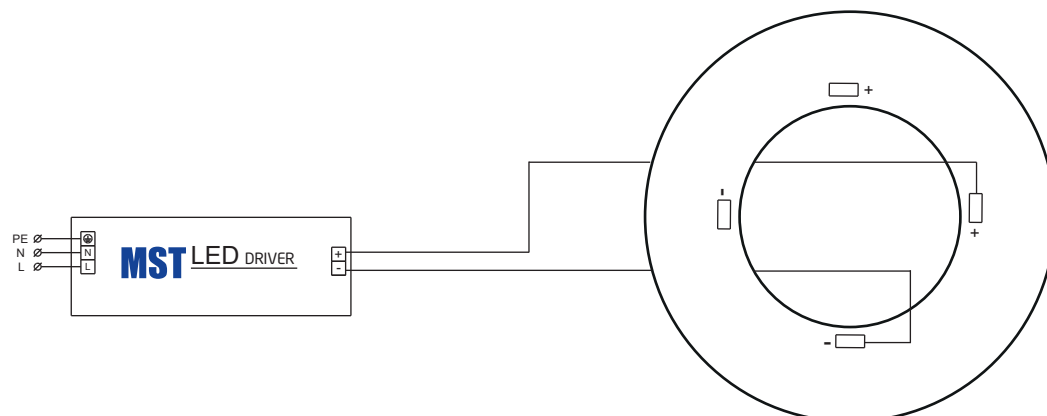
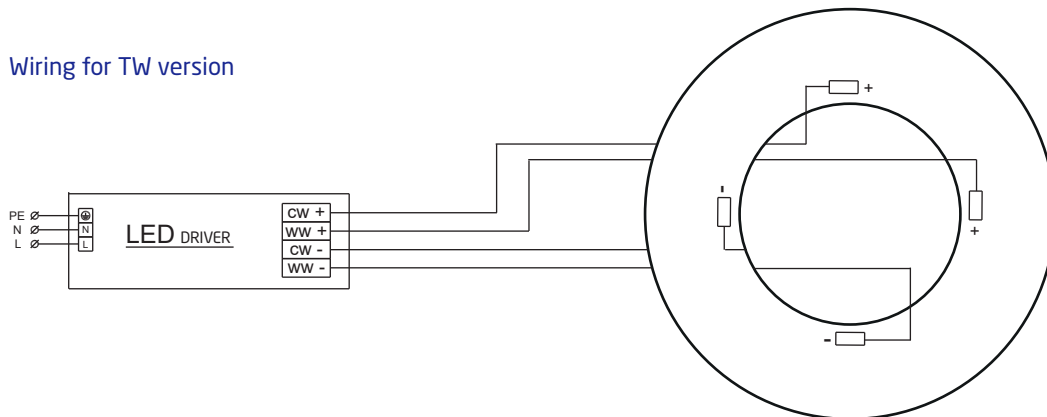
L - strip length	Min	Max
ø<1.55mm	6.5mm	7.5mm
ø>1.55mm	7.5mm	9.5mm

Opening for the release of wires from the top with release tool BJB art. 46.110.U801-1:



Connections

Wiring for TW version



To prevent irregular luminous intensity in parallel connection use only LED modules from the same V-code group.
V-code (e.g. "A", "B", "AB") is printed on the LED module and box label. Naming is not adequate to efficacy or luminous flux.

Ring LED modules 29.2-54.2 ULLA-UP

Energy Label / EPREL database

To obtain Energy Label for this product visit <https://eprel.ec.europa.eu/> and enter model identifier

Model identifier consists of 10 digits XXXX XXX XXX. It is printed directly on the LED module or on product label. This is the number you can see in EPREL database.

Ordering code consist of 12 digits XXXX XXX XXX46. Additional last two digits means packaging of the product.

Ordering codes

Product name	Ordering code	Pieces per box	Pieces per pallet	Box dimensions [mm]
RingLED 29.2-54.2mm 2x450lm 827-865 36V ULLA-UP CJ G4	1010 147 71846	24	17400	158 x 76 x 62
RingLED 29.2-54.2mm 900lm 830 36V ULLA-UP CJ G4	1010 147 71646	24	17400	158 x 76 x 62
RingLED 29.2-54.2mm 900lm 840 36V ULLA-UP CJ G4	1010 147 71746	24	17400	158 x 76 x 62